

ATAL BHUJAL YOJANA (AtalJal)

State : HARYANA

**Department : IRRIGATION & WATER
RESOURCE DEPARTMENT**

BLOCK : GULHA

DISTRICT : KAITHAL

YEAR : 2023-2024

*Towards partial fulfilment of requirements for Disbursement of
Incentive under DLI -1*

HYDROGEOLOGICAL REPORT

(YEAR: 2023-24)

STATE	:	HARYANA
DISTRICT	:	KAITHAL
BLOCK/TALUK	:	GULHA
BLOCK/TALUK HQs	:	GULHA

A		GENERAL INFORMATION			
1.	Geographical area (Ha)	:	40556.84		
2.	No. of Gram Panchayats	:	61		
3.	No. of towns	:	1		
4.	No. of villages	:	78		
5.	Population (2022)	:	Male	Female	Total
			57657	53970	111627
6.	Rainfall (mm) (2022)	:	Monsoon	Non-monsoon	Annual
			523.77	194.06	717.83
7.	River basin	:	Upper Ghaggar Basin		
8.	Major soil types	:	Loamy sand		

B		LAND USE		
1.	Forest area (Ha)	:	72	
2.	Cultivable area (Ha)	:	28938.45	
3.	Net sown area (Ha)	:	27960.67	
4.	Gross cropped area (Ha)	:	59673.90	

C		CROPPING PATTERN (As in 2022-23)				
1.	Major crops grown	:	Kharif	Rabi	Summer	Perennial
			Paddy	Wheat	Summer moong	Sugarcane
			Jowar	Barseem	Maize as green fodder	
				Sarson		
			Seasonal vegetables	Potato and others seasonal vegetables		

D		IRRIGATION FACILITIES (As in 2022-23)					
1.	Net irrigated area (Ha)	:	27960.67				
2.	Gross irrigated area (Ha)	:	57867				
3.	Area under irrigation (Ha) (Source-wise)	:	DW	BW/TW	Tanks/Ponds	Canals	Others
			-	34763	-	23104	-

E		GEOLOGY & HYDROGEOLOGY		
1.	Predominant rocktype	:	Sand	
2.	Major geological formations	:	Indo-Gangetic Alluvium	
3.	Important water-bearing formations	:	Sand	
4.	Status of coverage under NAQUIM	:	Covered / Not Covered.	

F GROUND WATER CONDITIONS								
1.	No. of wells used for WaterLevel (WL) monitoring.	:	Open wells			BW/TW/ PZ		
			CGWB	SGWB	Total	CGWB	SGWB	Total
			0	0	0	1	35	36
2.	Monitoring mechanism (Nos.)	:	Manual		DWLR		Telemetry	
			CGWB	SGWB	CGWB	SGWB	CGWB	SGWB
			1	24	0	11	0	11
3.	Monitoring frequency	:	Agency	No. of times monitored/year				
			CGWB	2 Times Annually				
			SGWB	2 Times Annually				
4.	Period of water level data availability.	:	Agency	Period of WL data availability (From - To)				
				From (year)		To (year)		
			CGWB	NA		NA		
			SGWB	2015		2023		
5.	Water level range (m.bgl)	:	Minimum/Village			Maximum/Village		
	Pre-monsoon (2023)		34.0 (Rewar Jagir)			57.9 (Mast Garh)		
	Post-monsoon (2023)		35.0 (Rewar Jagir)			59.6 (Azimgarh)		
6.	Seasonal WL fluctuation range (m)	:	Minimum/ Village			Maximum/ Village		
			-4.4 (Sultania Kartarpur)			9.7 (Agondh)		

G GROUND WATER QUALITY								
1.	No. of wells used for Water Quality (WQ) monitoring.	:	Open Wells			BW/TW/ PZ		
			CGWB	SGWB	Total	CGWB	SGWB	Total
			0	0	0	1	35	36
2.	Monitoring frequency	:	Agency	No. of times monitored/year				
			CGWB	1 Times Annually				
			SGWB	1 Times Annually				
3.	Period of water quality data availability	:	Agency	Period of WQ data availability (Years)				
			CGWB	2015-2023				
			SGWB	2020-2023				
4.	Parameters analysed	:	Agency	Parameters Analysed				
			CGWB	pH, EC, TH, Ca, Mg, Na, K, CO ₃ , HCO ₃ , SO ₄ , Cl, F, NO ₃				
			SGWB	EC				
			SGWB New	pH, EC, TDS, TH, Ca, Mg, Na, K, CO ₃ , HCO ₃ , SO ₄ , Cl, F, NO ₃				
5.	Known ground water quality issues, if any	:	As such there is no ground water problem in the block					

H. GROUND WATER RESOURCES							
1.	Latest assessment year	2022					
2.	Assessment Unit	Block					
3.	Annual extractable GW resource (ha.m)	7845.9					
4.	Current annual GW extraction (ha.m)	17560.39					
5.	Net GW availability for future use (ha.m)	0					
6.	Stage of GW extraction (%)	223.82%					
7.	Category of block/taluk (2022)	Over Exploited					
8.	Category of block/taluk/ in previous assessments	2020	2017	2013	2011	2009	2004
		Over Exploited	Over Exploited	Over Exploited	Over Exploited	Over Exploited	Over Exploited

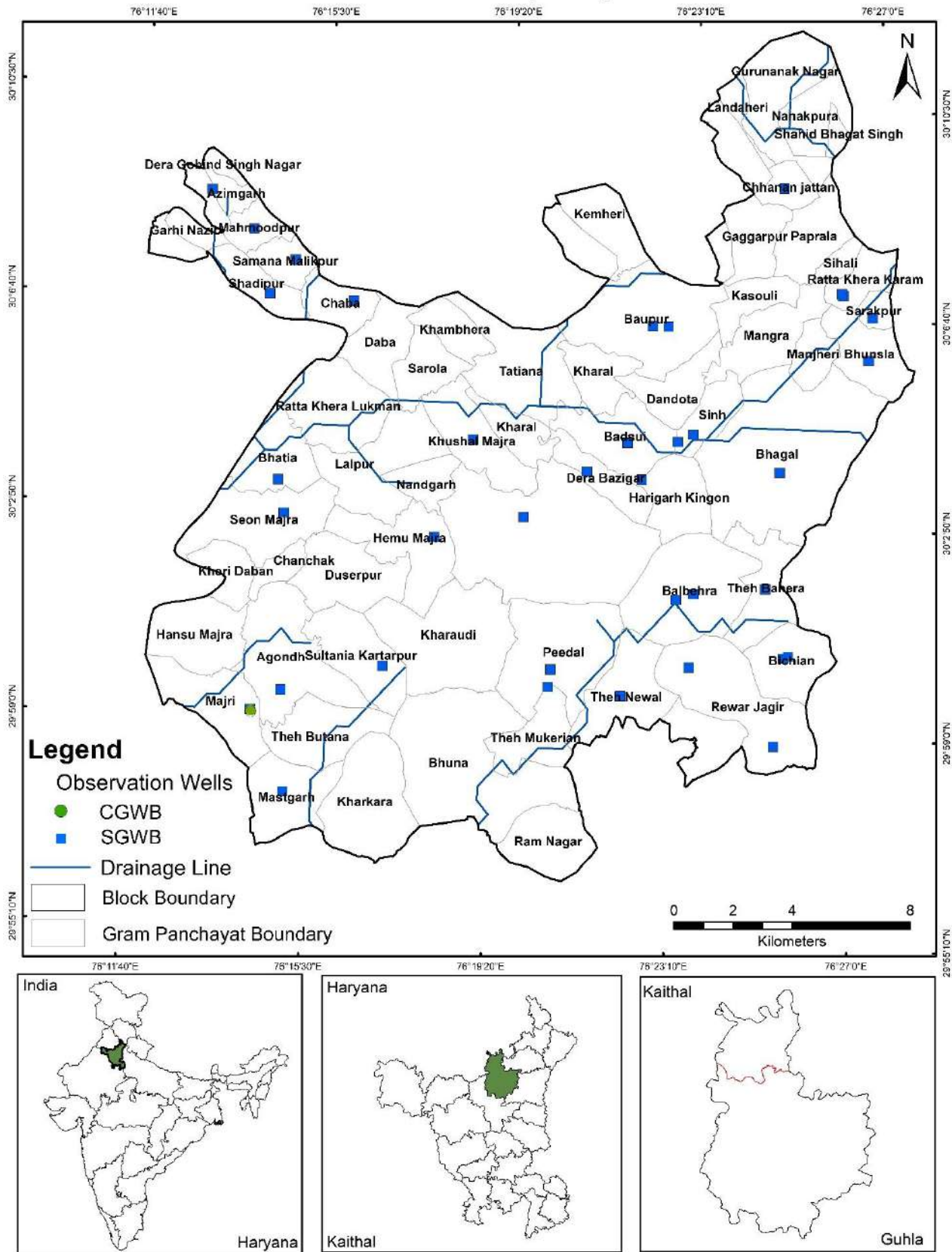
I WATER-RELATED SCHEMES							
-------------------------	--	--	--	--	--	--	--

I.	Schemes with a bearing on ground water, being implemented in the block / taluk.		
	Centrally Sponsored /Central Sector Schemes	i)	MGNREGA
		ii)	JJM
		iii)	PMKSY
		iv)	RKVY
		v)	NHP
		vi)	NAQUIM
	State Schemes	i)	State Plan Scheme (Head 2402)
		ii)	MPMV
		iii)	
		iv)	

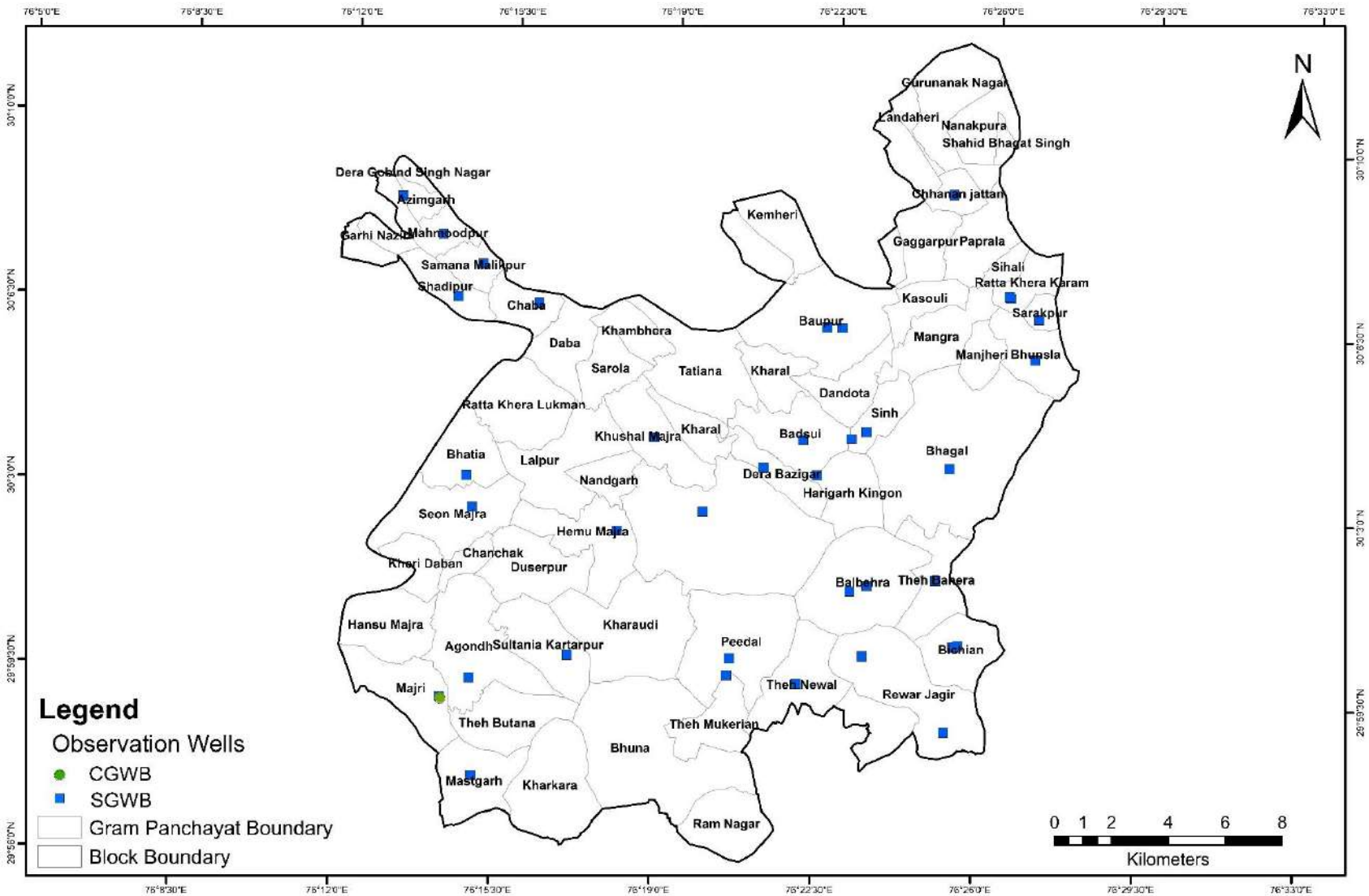
J	GROUND WATER RELATED ISSUES		
I.	Ground water related issues of the block/		
	i) Issues related to GW availability	:	Due to over exploitation groundwater is depleting at higher rates in the block. Significantly large number of shallow tube wells exist in the block
	ii) Issues related to GW quality	:	No such issue
	iii) Other issues if any.	:	

K	ANNEXURES		
I.	Basic data of observation wells – Attached		
II.	Historical water level data – Attached		
III.	Historical water quality data – Attached		

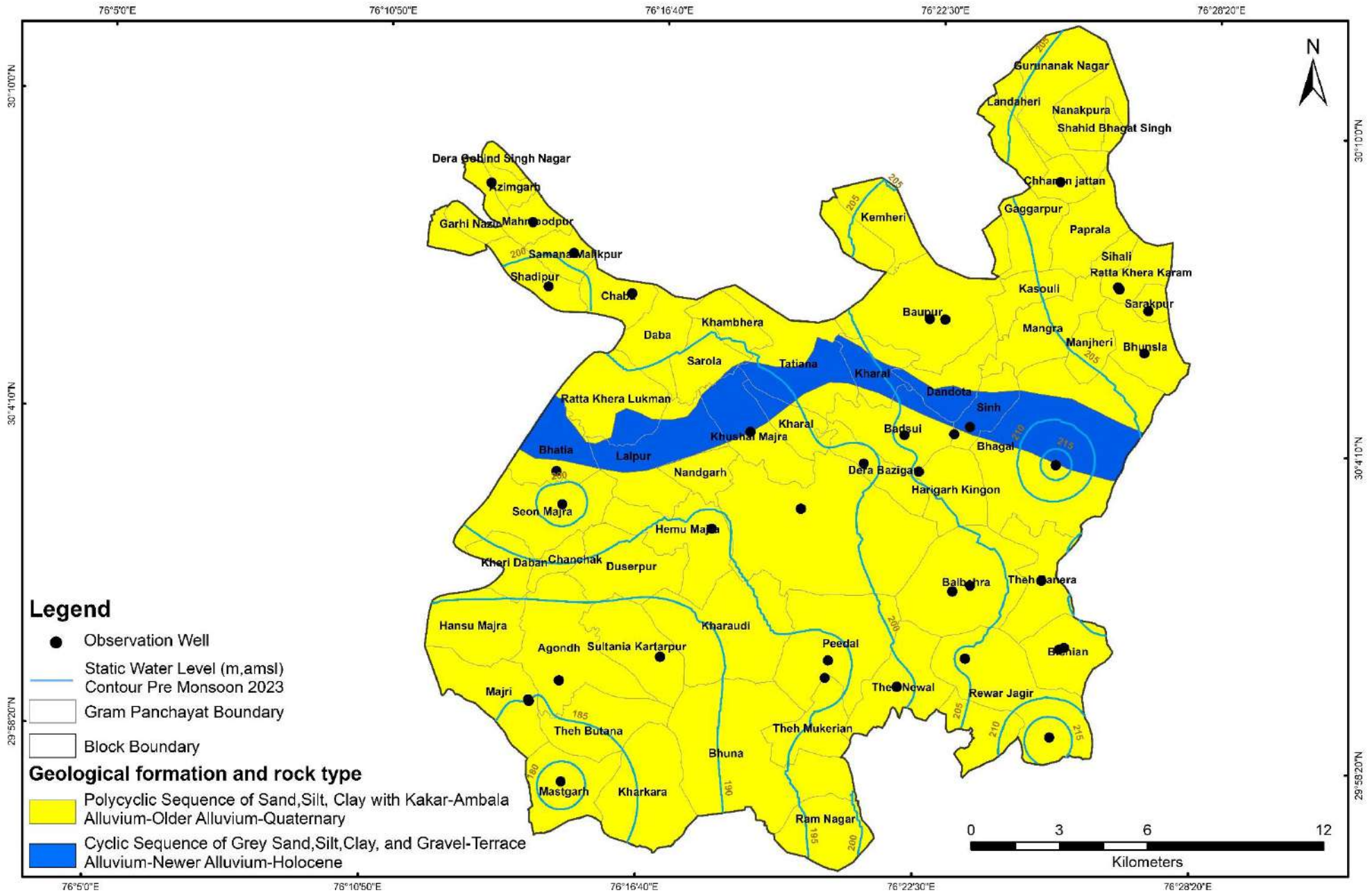
Location Map of Block- Guhla, District- Kaithal, Haryana



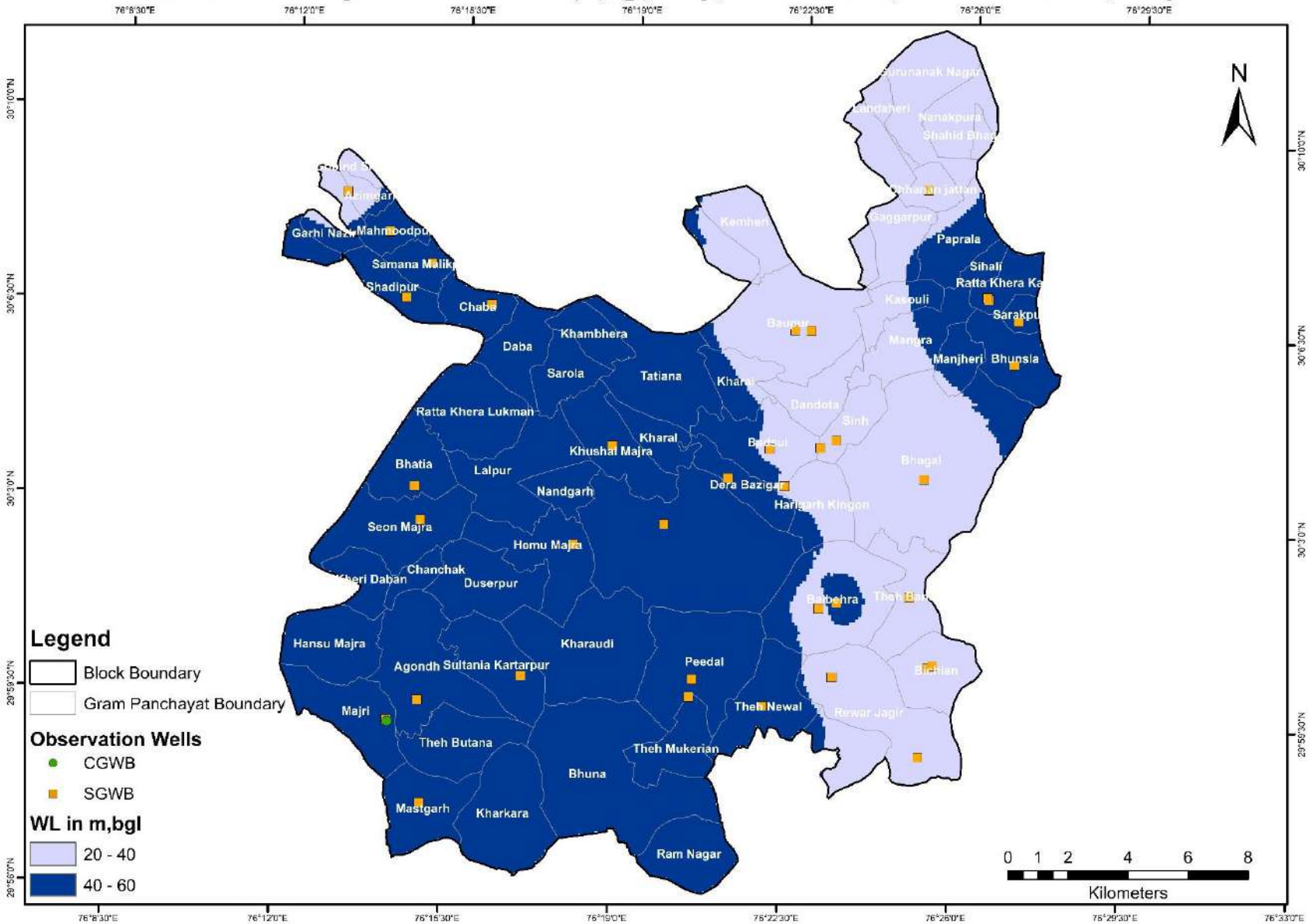
Location of Observation Wells for Monitoring Water Levels and Water Quality, Block-Guhla, District- Kaithal, Haryana



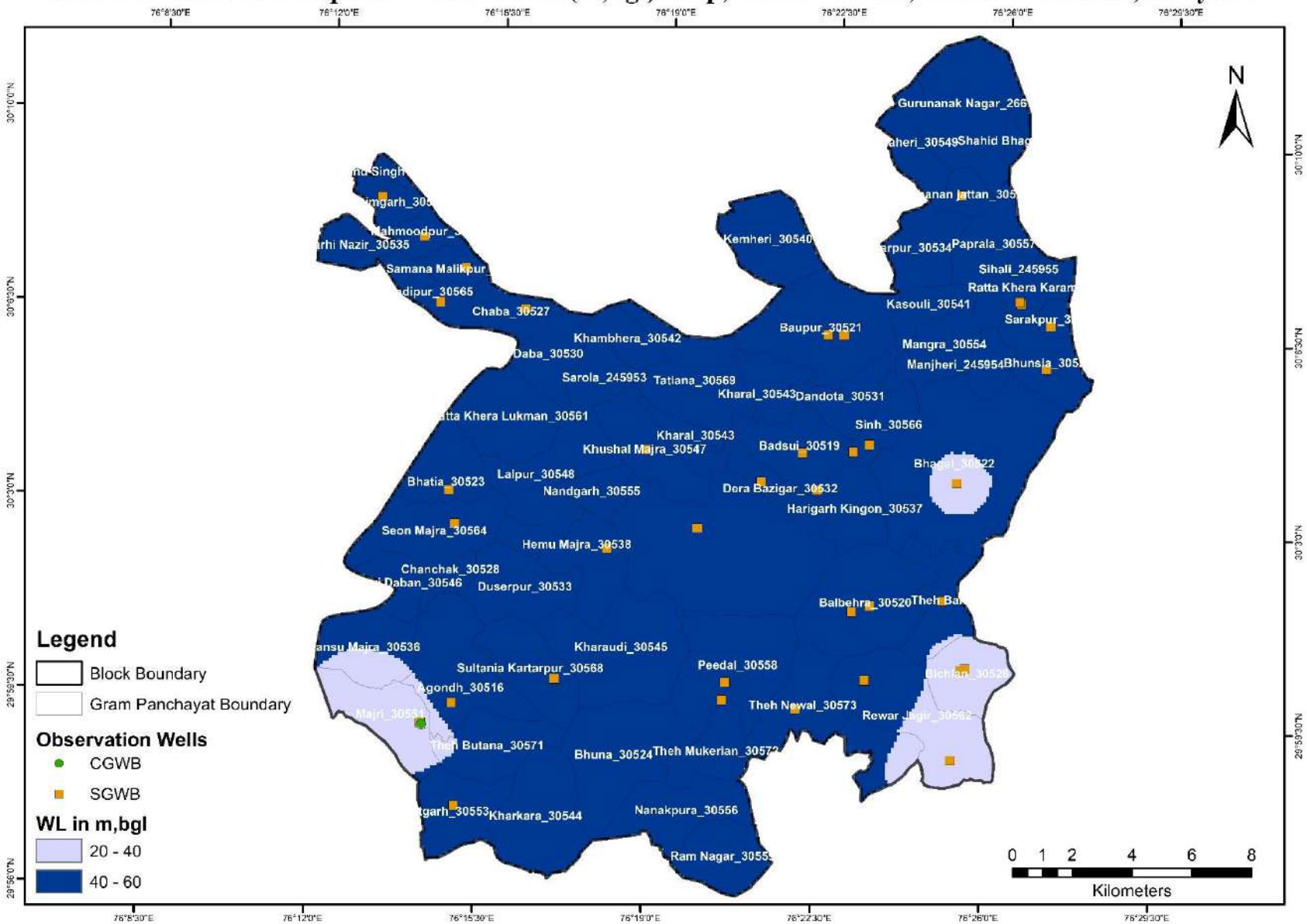
Hydrogeological Map, Block- Guhla, District- Kaithal, Haryana



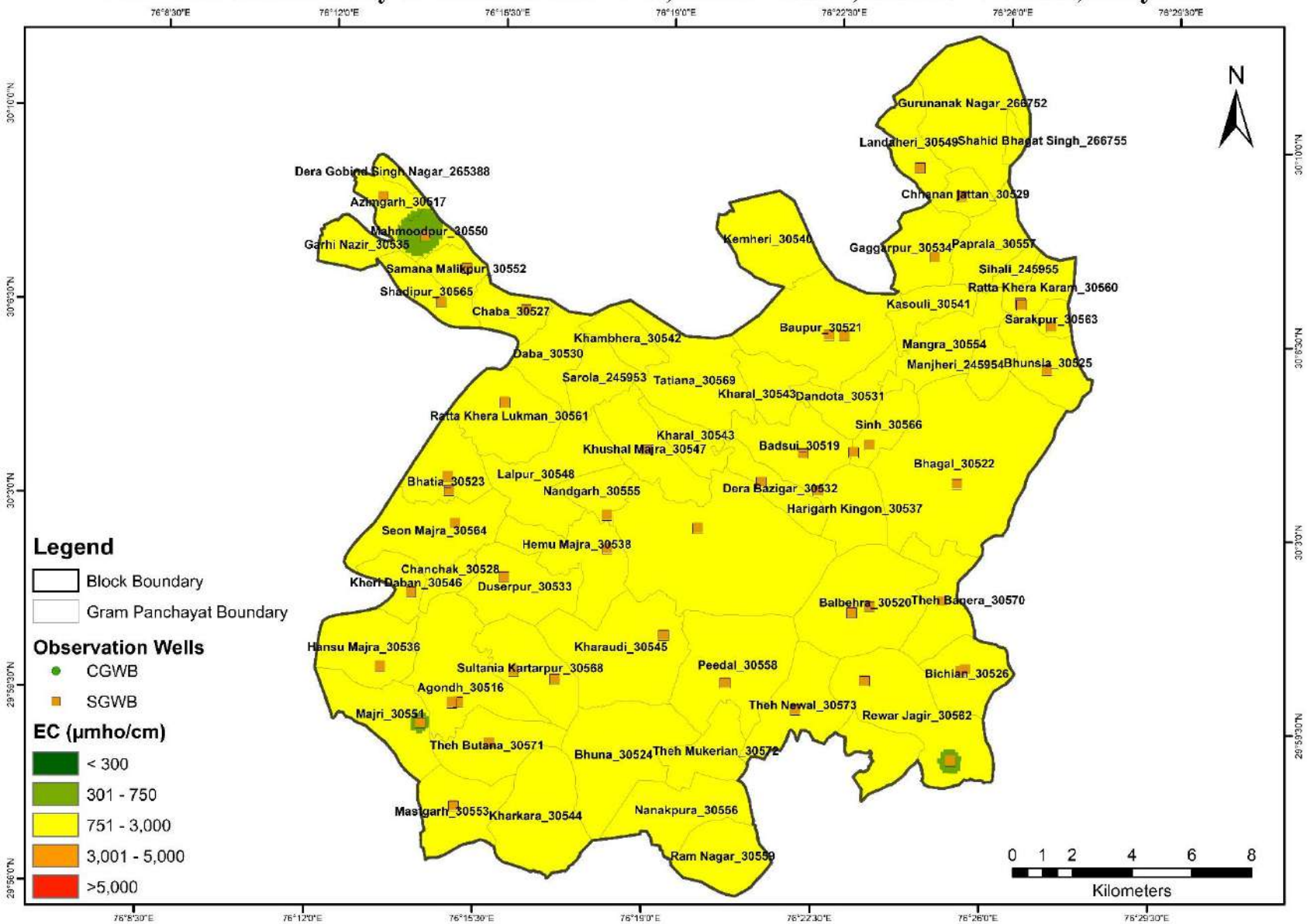
Pre Monsoon 2023 Depth to Water Level (m,bgl) Map, Block - Guhla, District - Kaithal, Haryana



Post Monsoon 2023 Depth to Water Level (m,bgl) Map, Block - Guhla, District - Kaithal, Haryana



Electrical Conductivity of Groundwater-2023, Block - Guhla, District - Kaithal, Haryana



ANNEXURE: 1

BASIC DATA OF MONITORING WELLS

State	Haryana				District	Kaithal			Block	Gulha					
S.No	Well ID	GP Name	Name of the village	Site Name	Latitude	Longitude	Type of Well (DW/PZ)	Reduced Level (m,asl)	Aquifer Type/Lithology	Height of Measuring (m,agl)	Depth (m,bgl)	Diameter (m)	Purpose of Monitoring (WL/WQ)	Monitoring Mechanism	Agency
1	Ch_30.111_76.269	Chaba_30527	Chaba	In the Village	30.11108	76.26875	TW	237	Unconfined and Confined	0.7	110	0.254	Both	Manual	SGWB
2	Ch_30.047_76.331	Cheeka	Cheeka	In Govt. Girls Sr. Sec. School	30.04729	76.33116	PZ	238.64	Unconfined and Confined	0.7	82.0	0.1	Both	Manual	SGWB
3	Gu_30.04_76.3	Hemu Majra_30538	Gulha	In Govt. Sr. Sec. School	30.04007	76.30013	PZ	238.53	Unconfined and Confined	0.7	96.0	0.1	Both	Manual	SGWB
4	Ag_29.992_76.249	Agondh_30516	Agondh	In the Village	29.99171	76.24858	TW	232.05	Unconfined to Semi Confined	0.7	100.0	0.254	Both	Manual	SGWB
5	Ha_30.06_76.372	Harigarh Kingon_30537	Harigarh Kingan	In Govt. Middle School	30.06007	76.37209	PZ	238.75	Unconfined and Confined	0.7	76.0	0.1	Both	Manual	SGWB
6	Jo_30.151_76.418	Chhanan jattan_30529	Jodwa	In the Village	30.15053	76.41792	TW	242.25	Unconfined and Confined	0.7	80	0.254	Both	Manual	SGWB
7	Ba_30.071_76.367	Badsui_30519	Badsui	In the Village	30.07113	76.36656	TW	237.39	Unconfined and Confined	0.7	100	0.254	Both	Manual	SGWB
8	Kh_30.07_76.312	Khushal Majra_30547	Khushal Majra	In the Village	30.07017	76.31236	TW	240	Unconfined and Confined	0.7	100	0.254	Both	Manual	SGWB
9	Ma_29.98_76.422	Rewar Jagir_30562	Machherheri	In the Village	29.98034	76.42171	TW	236.9	Unconfined and Confined	0.7	90	0.254	Both	Manual	SGWB
10	Ma_30.132_76.233	Mahmoodpur_30550	Mahmudpur	In the Village	30.13169	76.23276	TW	240	Unconfined and Confined	0.7	100	0.254	Both	Manual	SGWB
11	Ma_29.985_76.238	Majri_30551	Majri	In the Village	29.98547	76.23806	TW	233.25	Unconfined and Confined	0.7	110	0.254	Both	Manual	SGWB
12	Ma_29.961_76.251	Mastgarh_30553	Mast Garh	In Govt. Primary School	29.96076	76.25068	PZ	233.4	Unconfined and Confined	0.7	76.0	0.1	Both	Manual	SGWB
13	Ba_30.026_76.392	Balbehra_30520	Balbehra	In the Village	30.02581	76.39176	TW	232.5	Unconfined and Confined	0.7	100	0.254	Both	Manual	SGWB
14	Pe_30.001_76.343	Peedal_30558	Peedal	In the Village	30.00114	76.34282	TW	238.75	Unconfined and Confined	0.7	100	0.254	Both	Manual	SGWB
15	Ra_30.118_76.44	Ratta Khera Karam_30560	Ratta Khera Khurana	In the Village	30.11838	76.44014	TW	243	Unconfined and Confined	0.7	100	0.254	Both	Manual	SGWB

Atal Bhujal Yojana - Block Hydrogeological Report

16	Re_30.024_76.386	Rewar Jagir_30562	Rewar	In the Village	30.02384	76.38561	TW	238.5	Unconfined and Confined	0.7	100	0.254	Both	Manual	SGWB
17	Ba_30.107_76.374	Baupur_30521	Baopur	In the Village	30.10699	76.37379	TW	242.76	Unconfined and Confined	0.7	100	0.254	Both	Manual	SGWB
18	Se_30.046_76.247	Seon Majra_30564	Seo Majra	In the Village	30.04568	76.24721	TW	235	Unconfined and Confined	0.7	100	0.254	Both	Manual	SGWB
19	Si_30.072_76.384	Sinh_30566	Sinh	In the Village	30.072	76.38409	TW	240.75	Unconfined and Confined	0.7	100	0.254	Both	Manual	SGWB
20	Su_30_76.284	Sultania Kartarpur_30568	Sultania	In the Village	30.00016	76.28385	TW	235	Unconfined and Confined	0.7	110	0.254	Both	Manual	SGWB
21	Bh_30.064_76.42	Bhagal_30522	Bhagal	In Govt. Sr. Sec. School	30.06378	76.42021	PZ	242.8	Unconfined and Confined	0.7	87.0	0.1	Both	Manual	SGWB
22	Bh_30.056_76.245	Bhatia_30523	Bhatian (Reported)(P.F.)	In the Village	30.05569	76.24468	TW	235.4	Unconfined and Confined	0.7	100	0.254	Both	Manual	SGWB
23	Bh_30.099_76.45	Bhunsla_30525	Bhusala	In Govt. Sr. Sec. School	30.09911	76.44978	PZ	242.5	Unconfined and Confined	0.7	96.0	0.1	Both	Manual	SGWB
24	Bi_30.007_76.424	Bichian_30526	Bichhian	In the Village	30.00733	76.42395	TW	241	Unconfined and Confined	0.7	110	0.254	Both	Manual	SGWB
25	HR_GW_343	Azimgarh_30517	AZIMGARH	Govt. Primary School	30.14322	76.21761	PZ	241	Semi Confined to confined	0.5	110	0.1	Both	Telemetry	SGWB
26	HR_GW_344	Baupur_30521	BAUPUR	Govt. Middle School	30.10701	76.3793	PZ	246	Semi Confined to confined	0.5	110	0.1	Both	Telemetry	SGWB
27	HR_GW_346	Bichian_30526	BICHHIAN	Govt. Primary School	30.00793	76.42565	PZ	243	Semi Confined to confined	0.5	100	0.1	Both	Telemetry	SGWB
28	HR_GW_328	Dera Bazigar_30532	DERA BAZIGARH/DE RA PARTAP SINGH	Govt. Primary School	30.06191	76.35261	PZ	244	Semi Confined to confined	0.5	110	0.1	Both	Telemetry	SGWB
29	HR_GW_334	Ratta Khera Karam_30560	MALIKPUR	Govt. Primary School	30.12272	76.24766	PZ	243	Semi Confined to confined	0.5	110	0.1	WL	Telemetry	SGWB
30	HR_GW_358	Peedal_30558	PEEDAL	Canal Rest House	29.99576	76.34196	PZ	243	Semi Confined to confined	0.5	110	0.1	WL	Telemetry	SGWB
31	HR_GW_342	Ratta Khera Karam_30560	RATTAKHERA KADAM	Govt. Primary School	30.11896	76.43961	PZ	245	Semi Confined to confined	0.5	110	0.1	Both	Telemetry	SGWB
32	HR_GW_337	Rewar Jagir_30562	RIWAR JAGIR	Govt. Primary School	30.0034	76.39105	PZ	243	Semi Confined to confined	0.5	110	0.1	Both	Telemetry	SGWB
33	HR_GW_359	Sarakpur_30563	SARAKPUR	Govt. Primary	30.11211	76.45063	PZ	242	Semi Confined to	0.5	110	0.1	Both	Telemetry	SGWB

Atal Bhujal Yojana - Block Hydrogeological Report

				School					confined						
34	HR_GW_347	Shadipur_30565	SHADIPUR	Govt. Primary School	30.11217	76.23921	PZ	241	Semi Confined to confined	0.5	110	0.1	Both	Telemetry	SGWB
35	HR_GW_361	Sinh_30566	SINH	Govt. Primary School	30.0744 1	76.38953	PZ	247	Semi Confined to confined	0.5	110	0.1	Both	Telemetry	SGWB
36	HR_GW_340	Theh Banera_30570	THEH BANERA	Govt. Primary School	30.0282 2	76.41675	PZ	245	Semi Confined to confined	0.5	100	0.1	Both	Telemetry	SGWB
37	HR_GW_364	Theh Newal_30573	THEH NEWAL	Govt. Middle School	29.9939 4	76.36743	PZ	245	Semi Confined to confined	0.5	110	0.1	Both	Telemetry	SGWB
38	W294800076224 801	Balbehra_30520	Balbahera	Balbahera pz	30.0221 3	76.3914	PZ	NA	Unconfined to Semi Confined	0.5	119	0.1	WL	Telemetry	CGWB
39	W2959060761418 01	Majri_30551	MAJRI	MAJRI-Pz	29.985	76.2383	PZ	NA	Unconfined to Semi Confined	0.5	168	0.1	WL	Telemetry	CGWB
40	W294800076224 801	Balbehra_30520	Balbera	Balbera	29.8472 2	76.66139	Tube Well	NA	Alluvium	NA	NA	NA	WQ	Manual	CGWB

ANNEXURE: 2
HISTORICAL WATER LEVEL (WL) DATA OF MONITORING WELLS

Atal Bhujal Yojana - Block Hydrogeological Report

State	Haryana	District	Kaithal	Block	Gulha
Month of Pre-monsoon Water Level Measurement					June
Month of Post-monsoon water Level measurement					October/November

S.No.	Observation Point	Source	Well Types	Co-ordinate		Water Level (m)																	
				Latitude	Longitude	2015		2016		2017		2018		2019		2020		2021		2022		2023	
						Pre	Post	Pre	Post	Pre	Post	Pre	Post	Pre	Post	Pre	Post	Pre	Post	Pre	Post	Pre	Post
1	Chaba_30527	SGWB	TW	30.1111	76.2687	32.1	34.6	34.1	35.2	35.9	36.9	37.6	39.4	40.3	40.2	40.1	42.2	42.1	42.5	43.4	43.6	42.4	43.0
2	Cheeka	SGWB	PZ	30.0473	76.3312	40.3	42.3	42.2	43.8	44.0	43.0	45.8	47.3	47.8	47.4	46.9	48.6	46.9	47.1	48.3	47.8	46.8	48.2
3	Hemu Majra_30538	SGWB	PZ	30.0401	76.3001	38.3	41.2	40.2	42.1	42.5	43.6	44.3	46.5	46.4	47.6	46.6	48.7	46.7	48.2	47.3	48.0	47.4	48.2
4	Agondh_30516	SGWB	TW	29.9917	76.2486	41.3	42.3	43.2	45.1	45.2	46.3	47.1	49.0	49.1	51.0	48.1	49.0	48.8	49.1	50.0	50.1	48.5	58.2
5	Harigarh Kingon_30537	SGWB	PZ	30.0601	76.3721	33.1	35.3	35.0	36.2	36.9	38.8	38.7	40.7	40.5	40.0	39.2	40.6	39.2	40.7	40.8	41.3	39.9	41.4
6	Chhanan jattan_30529	SGWB	TW	30.1505	76.4179	31.9	33.3	33.7	33.0	35.4	36.8	37.7	39.5	39.8	40.8	40.1	40.1	38.2	38.8	39.0	39.5	39.4	41.2
7	Badsui_30519	SGWB	TW	30.0711	76.3666	28.7	30.9	36.7	32.5	35.5	33.1	34.3	36.1	36.3	38.1	38.0	39.1	39.1	39.8	40.9	41.3	39.5	45.6
8	Khushal Majra_30547	SGWB	TW	30.0702	76.3124	31.9	34.8	33.9	35.8	35.8	37.1	38.0	39.8	39.9	41.5	41.2	43.1	42.1	43.3	43.5	44.1	42.6	42.7
9	Rewar Jagir_30562	SGWB	TW	29.9803	76.4217	23.9	25.2	25.9	27.0	27.8	29.2	29.4	31.2	31.4	31.5	31.4	32.9	33.3	34.2	35.2	35.4	34.0	35.0
10	Mahmoodpur_30550	SGWB	TW	30.1317	76.2328	33.6	35.0	34.0	34.6	36.0	36.9	37.8	39.6	39.2	40.6	40.5	41.1	41.0	41.6	42.9	43.3	41.8	44.3
11	Majri_30551	SGWB	TW	29.9855	76.2381	42.9	45.5	44.8	46.6	46.7	47.8	48.7	50.5	50.7	52.7	51.7	51.8	50.8	51.8	52.4	52.5	51.4	52.6
12	Mastgarh_30553	SGWB	PZ	29.9608	76.2507	50.5	53.1	52.4	54.2	54.4	56.4	56.2	58.2	58.1	60.0	58.6	58.9	57.2	58.1	57.9	59.8	57.9	58.3
13	Balbehra_30520	SGWB	TW	30.0258	76.3918	33.1	34.2	33.7	32.8	36.0	37.6	37.5	39.2	39.2	39.9	39.4	41.6	41.6	42.1	43.5	43.7	42.2	42.9
14	Peedal_30558	SGWB	TW	30.0011	76.3428	40.3	41.5	41.6	43.3	43.3	44.4	45.0	46.9	47.1	47.4	47.4	48.2	48.2	48.9	49.8	50.0	48.2	52.3

Atal Bhujal Yojana - Block Hydrogeological Report

33	Sarakpur_3 0563	SGWB	PZ	30.1121	76.4506	NA	NA	NA	NA	NA	NA	NA	NA	NA	NA	NA	NA	NA	NA	NA	NA	40.5	47.4
34	Shadipur_3 0565	SGWB	PZ	30.1122	76.2392	NA	NA	NA	NA	NA	NA	NA	NA	NA	NA	NA	NA	NA	NA	NA	NA	45.2	43.3
35	Sinh_30566	SGWB	PZ	30.0744	76.3895	NA	NA	NA	NA	NA	NA	NA	NA	NA	NA	NA	NA	NA	NA	NA	NA	39.2	42.7
36	Theh Banera_305 70	SGWB	PZ	30.0282	76.4167	NA	NA	NA	NA	NA	NA	NA	NA	NA	NA	NA	NA	NA	NA	NA	NA	37.9	40.9
37	Theh Newal_305 73	SGWB	PZ	29.9939	76.3674	NA	NA	NA	NA	NA	NA	NA	NA	NA	NA	NA	NA	NA	NA	NA	NA	45.8	47.7
38	Balbehra_3 0520	CGWB	PZ	30.0221	76.3914	33.1	34.2	33.5	45.7	34.6	NA	NA	NA	NA	36.8	NA	NA	NA	NA	36.9	43.7	39.9	39.7
39	Majri_3055 1	CGWB	PZ	29.985	76.2383	NA	NA	NA	NA	NA	NA	50.0	52.1	NA	51.7	49.6	54.2	51.6	53.5	52.3	52.6	56.2	Erratic DWLR data

HISTORICAL WATER QUALITY (WQ) DATA OF MONITORING WELLS BY SGWB

State	Haryana	District	Kaithal	Block	Gulha
Month of Collection of sample for WQ monitoring*					June

Village	Source	Type of well	Latitude	Longitude	Year	pH	EC	TDS	TH	Ca	Mg	Na	K	CO ₃	HCO ₃	SO ₄	Cl	F	NO ₃	
Balbera	CGWB	Tw	30.0248	76.3946	2015	8.65	1920	ND	236.0	16.0	47.0	332.0	12.0	70.0	392.7	135.0	256.0	0.50	50.00	
Balbera	CGWB	Tw	30.0248	76.3946	2016	Sample not collected from this location														
Balbera	CGWB	Tw	30.0248	76.3946	2017	8.28	960	ND	220.0	16.0	44.0	145.0	7.3	0.0	464.0	55.0	71.0	0.78	6.00	
Balbera	CGWB	Tw	30.0248	76.3946	2018	8.16	850	ND	220.0	8.0	49.0	100.0	7.3	0.0	391.0	45.0	50.0	0.62	9.00	
Balbera	CGWB	Tw	30.0248	76.3946	2019	8.96	1502	ND	200.0	120.0	41.0	271.0	1.8	120.0	476.0	4.8	121.0	0.05	21.00	
Balbera	CGWB	Tw	30.0248	76.3946	2020	Sample not collected from this location														
Balbera	CGWB	Tw	30.0248	76.3946	2021	8.88	1522	ND	274.0	13.2	58.6	220.0	8.0	108.0	419.2	27.0	146.6	0.59	22.00	
Balbera	CGWB	Tw	30.0248	76.3946	2022	8.76	1470	ND	270.0	14.0	57.1	217.0	7.2	72.0	429.0	136.0	71.0	0.52	18.00	
Balbera	CGWB	Tw	30.0248	76.3946	2023	8.95	1530	ND	250.0	28.0	43.8	249.9	9.7	48.0	610.0	0.0	156.2	0.10	22.19	
Bichian_30526	SGWB	Pz	30.00793	76.425645	2023	8.37	913	621.8	267.36	74.6	19.94	115	20	0	232.2	30.44	206.6	1.6	22.99	
Dera Bazigar_30532	SGWB	Pz	30.061911	76.352614	2023	8.38	1116	676.4	290.87	81.2	21.27	125	20	0	251.9	33.08	225.6	1.43	25.01	
Sarakpur_30563	SGWB	Pz	30.112111	76.450626	2023	8.04	1139	698.5	300.35	83.8	22.6	130	25	0	261.8	34.18	232.8	1.28	25.83	
Baupur_30521	SGWB	Pz	30.107007	76.379299	2023	8.05	1109	690.9	297.08	82.9	21.28	125	25	0	256.9	33.85	230.4	1.48	25.56	
Theh Newal_30573	SGWB	Pz	29.993942	76.367426	2023	8.14	2570	1699.6	730.83	204	54.5	315	55	0	627.4	83.19	562.9	1.74	62.88	
Azimgarh_30517	SGWB	Pz	30.143216	76.21761	2023	8.16	802	529.6	262.15	68.8	22.58	100	15	0	217.4	27.47	147.3	0.52	18	
Shadipur_30565	SGWB	Pz	30.112165	76.239207	2023	8.2	868	575.9	285.09	74.9	23.91	110	20	0	237.1	29.89	159.1	0.71	19.58	
Sinh_30566	SGWB	Pz	30.07441	76.389526	2023	8.29	1228	657.8	282.87	78.9	19.95	120	20	0	247	32.2	218.5	1.83	24.33	
Theh Banera_30570	SGWB	Pz	30.028224	76.416749	2023	8.64	1038	677.7	291.41	81.3	21.27	125	20	0	251.9	33.19	225.6	1.33	25.06	
Ratta Khera Karam_30560	SGWB	Pz	30.118961	76.439611	2023	8.26	1093	727.3	312.72	87.3	22.6	135	25	0	271.7	35.6	242.3	1.32	26.91	
Rewar Jagir_30562	SGWB	Pz	30.003398	76.391046	2023	8.31	2290	1565	672.95	187.8	49.19	290	50	0	578	76.59	520.2	1.42	57.9	

Atal Bhujal Yojana - Block Hydrogeological Report

Name of District	Name of Block	Source	Name of village/ OW data	Latitude	Longitude	Value of E.C June 2020	Value of E.C June-2021	Value of E.C June-2022	Value of E.C June-2023
Kaithal_66	Guhla_505	SGWB	Agondh	29.99171	76.24858	500	600	700	700
Kaithal_66	Guhla_505	SGWB	Mahmudpur	30.1317	76.2328	500	500	700	600
Kaithal_66	Guhla_505	SGWB	Badsui	30.07113	76.36656	800	800	800	1000
Kaithal_66	Guhla_505	SGWB	Balbehra	30.02581	76.39176	750	800	800	1000
Kaithal_66	Guhla_505	SGWB	Bhagal	30.06378	76.42021	750	700	700	900
Kaithal_66	Guhla_505	SGWB	Bhatian (Reported)	30.0557	76.2447	700	700	800	800
Kaithal_66	Guhla_505	SGWB	SeoMajra	30.0457	76.2472	900	900	1000	900
Kaithal_66	Guhla_505	SGWB	Bhusala	30.0991	76.4498	600	600	600	800
Kaithal_66	Guhla_505	SGWB	Bichhian	30.0073	76.424	950	1000	1000	900
Kaithal_66	Guhla_505	SGWB	Chaba	30.11108	76.26875	550	500	700	900
Kaithal_66	Guhla_505	SGWB	Gulha	30.04007	76.30013	850	1000	1000	900
Kaithal_66	Guhla_505	SGWB	Baopur	30.107	76.3738	1300	1300	1200	900
Kaithal_66	Guhla_505	SGWB	Jodwa	30.1505	76.4179	500	800	800	1100
Kaithal_66	Guhla_505	SGWB	Majri	29.9855	76.2381	550	700	700	700
Kaithal_66	Guhla_505	SGWB	Machherheri	29.9803	76.4217	450	600	800	700
Kaithal_66	Guhla_505	SGWB	KhushalMajra	30.0702	76.3124	700	600	600	800
Kaithal_66	Guhla_505	SGWB	Mast Garh	29.9608	76.2507	450	400	600	800
Kaithal_66	Guhla_505	SGWB	Peedal	30.0011	76.3428	1000	1300	1400	1300
Kaithal_66	Guhla_505	SGWB	Rewar	30.0238	76.3856	1550	1700	1600	1400
Kaithal_66	Guhla_505	SGWB	RattaKheraKhurana	30.1184	76.4401	550	500	700	800
Kaithal_66	Guhla_505	SGWB	Sultania	30.0002	76.2839	700	600	700	1100
Kaithal_66	Guhla_505	SGWB	Bhuna			1100	1000	1000	900
Kaithal_66	Guhla_505	SGWB	Sinh	30.072	76.3841	650	900	800	700
Kaithal_66	Guhla_505	SGWB	Cheeka	30.0473	76.3312	700	700	800	800
Kaithal_66	Guhla_505	SGWB	HarigarhKingan	30.0601	76.3721	850	800	900	1900
Kaithal_66	Guhla_505	SGWB	Bichian_30526	30.00793	76.42565	NA	NA	NA	913
Kaithal_66	Guhla_505	SGWB	Dera Bazigar_30532	30.06191	76.35261	NA	NA	NA	1116
Kaithal_66	Guhla_505	SGWB	Sarakpur_30563	30.11211	76.45063	NA	NA	NA	1139

Atal Bhujal Yojana - Block Hydrogeological Report

Kaithal_66	Guhla_505	SGWB	Baupur_30521	30.10701	76.3793	NA	NA	NA	1109
Kaithal_66	Guhla_505	SGWB	Theh Newal_30573	29.99394	76.36743	NA	NA	NA	2570
Kaithal_66	Guhla_505	SGWB	Azimgarh_30517	30.14322	76.21761	NA	NA	NA	802
Kaithal_66	Guhla_505	SGWB	Shadipur_30565	30.11217	76.23921	NA	NA	NA	868
Kaithal_66	Guhla_505	SGWB	Sinh_30566	30.07441	76.38953	NA	NA	NA	1228
Kaithal_66	Guhla_505	SGWB	Theh Banera_30570	30.02822	76.41675	NA	NA	NA	1038
Kaithal_66	Guhla_505	SGWB	Ratta Khera Karam_30560	30.11896	76.43961	NA	NA	NA	1093
Kaithal_66	Guhla_505	SGWB	Rewar Jagir_30562	30.0034	76.39105	NA	NA	NA	2290