

ATAL BHUJAL YOJANA (AtalJal)

State : HARYANA

**Department : IRRIGATION & WATER
RESOURCE DEPARTMENT**

BLOCK : PEHOWA

DISTRICT : KURUKSHETRA

YEAR : 2023-2024

*Towards partial fulfilment of requirements for Disbursement of
Incentive under DLI -1*

HYDROGEOLOGICAL REPORT

(YEAR: 2023-24)

STATE	:	HARYANA
DISTRICT	:	KURUKSHETRA
BLOCK/TALUK	:	PEHOWA
BLOCK/TALUK HQs	:	PEHOWA

A GENERAL INFORMATION					
1.	Geographical area (Ha)	:	42661.03		
2.	No. of Gram Panchayats	:	67		
3.	No. of towns	:	1		
4.	No. of villages	:	72		
5.	Population (2022)	:	Male	Female	Total
			79625	75229	154856
6.	Rainfall (mm) (2022)	:	Monsoon	Non-monsoon	Annual
			519.03	272.46	791.49
7.	River basin	:	Ghaggar river basin		
8.	Major soil types	:	Loamy sand (Tropical arid brown)		

B LAND USE			
1.	Forest area (Ha)	:	2593.94
2.	Cultivable area (Ha)	:	36730
3.	Net sown area (Ha)	:	36730
4.	Gross cropped area (Ha)	:	77131

C CROPPING PATTERN (As in 2022-23)						
1.	Major crops grown	:	Kharif	Rabi	Summer	Perennial
			Paddy	Wheat	Summer moong	Sugarcane
			Jowar	Barseem	Maize as green fodder	
				Sarson		
			Seasonal vegetables	Potato and others seasonal vegetables		

D IRRIGATION FACILITIES (As in 2022-23)							
1.	Net irrigated area (Ha)	:	36730				
2.	Gross irrigated area (Ha)	:	77131				
3.	Area under irrigation (Ha) (Source-wise)	:	DW	BW/TW	Tanks/Ponds	Canals	Others
			-	74455	-	2676	-

E GEOLOGY & HYDROGEOLOGY			
1.	Predominant rocktype	:	Sand with Kankar, Silt and Clay
2.	Major geological formations	:	Older and Newer Alluvium

3.	Important water-bearing formations	:	Sand
4.	Status of coverage under NAQUIM		Covered.

F GROUND WATER CONDITIONS									
1.	No. of wells used for Water Level (WL) monitoring.	:	Open wells			BW/TW/ PZ			
			CGWB	SGWB	Total	CGWB	SGWB	Total	
			0	0	0	3	61	64	
2.	Monitoring mechanism (Nos.)	:	Manual		DWLR		Telemetry		
			CGWB	SGWB	CGWB	SGWB	CGWB	SGWB	
			1	23	2	38	2	38	
3.	Monitoring frequency	:	Agency	No. of times monitored/year					
			CGWB	2 Times Annually					
			SGWB	2 Times Annually					
4.	Period of water level data availability.	:	Agency	Period of WL data availability (From - To)					
				From (year)		To (year)			
			CGWB	2015		2023			
			SGWB	2015		2023			
5.	Water level range (m.bgl)	:	Minimum/Village			Maximum/Village			
	Pre-monsoon (2023)		32.73 (Bhor Saidan)			47.27 (Jurasi Kalan)			
	Post-monsoon (2023)		25.5 (Bhor Saidan)			46.8 (Jurasi Khurd)			
6.	Seasonal WL fluctuation range (m)	:	Minimum/ Village			Maximum/ Village			
			-8.06 (Bhor Saidan)			8,07 (Chanal Heri)			

G GROUND WATER QUALITY								
1.	No. of wells used for Water Quality (WQ) monitoring.		Open Wells			BW/TW/ PZ		
			CGWB	SGWB	Total	CGWB	SGWB	Total
			0	0	0	5	59	64
2.	Monitoring frequency		Agency	No. of times monitored/year				
			CGWB	1 Times Annually				
			SGWB	1 Times Annually				
3.	Period of water quality data availability		Agency	Period of WQ data availability (Years)				
			CGWB	2015 to 2023				
			SGWB	2020to 2023				
4.	Parameters analysed		Agency	Parameters Analysed				
			CGWB	pH, EC, TH, Ca, Mg, Na, K, CO ₃ , HCO ₃ , SO ₄ , Cl, F, NO ₃				
			SGWB	EC				
			SGWB New	pH, EC, TDS, TH, Ca, Mg, Na, K, CO ₃ , HCO ₃ , SO ₄ , Cl, F, NO ₃				
5.	Known ground water quality issues, if any		No Such issue					

H. GROUND WATER RESOURCES		
1.	Latest assessment year	2022
2.	Assessment Unit	Block
3.	Annual extractable GW resource (ha.m)	8822.43
4.	Current annual GW extraction (ha.m)	17039.68
5.	Net GW availability for future use (ha.m)	0
6.	Stage of GW extraction (%)	193.14%
7.	Category of	Over Exploited

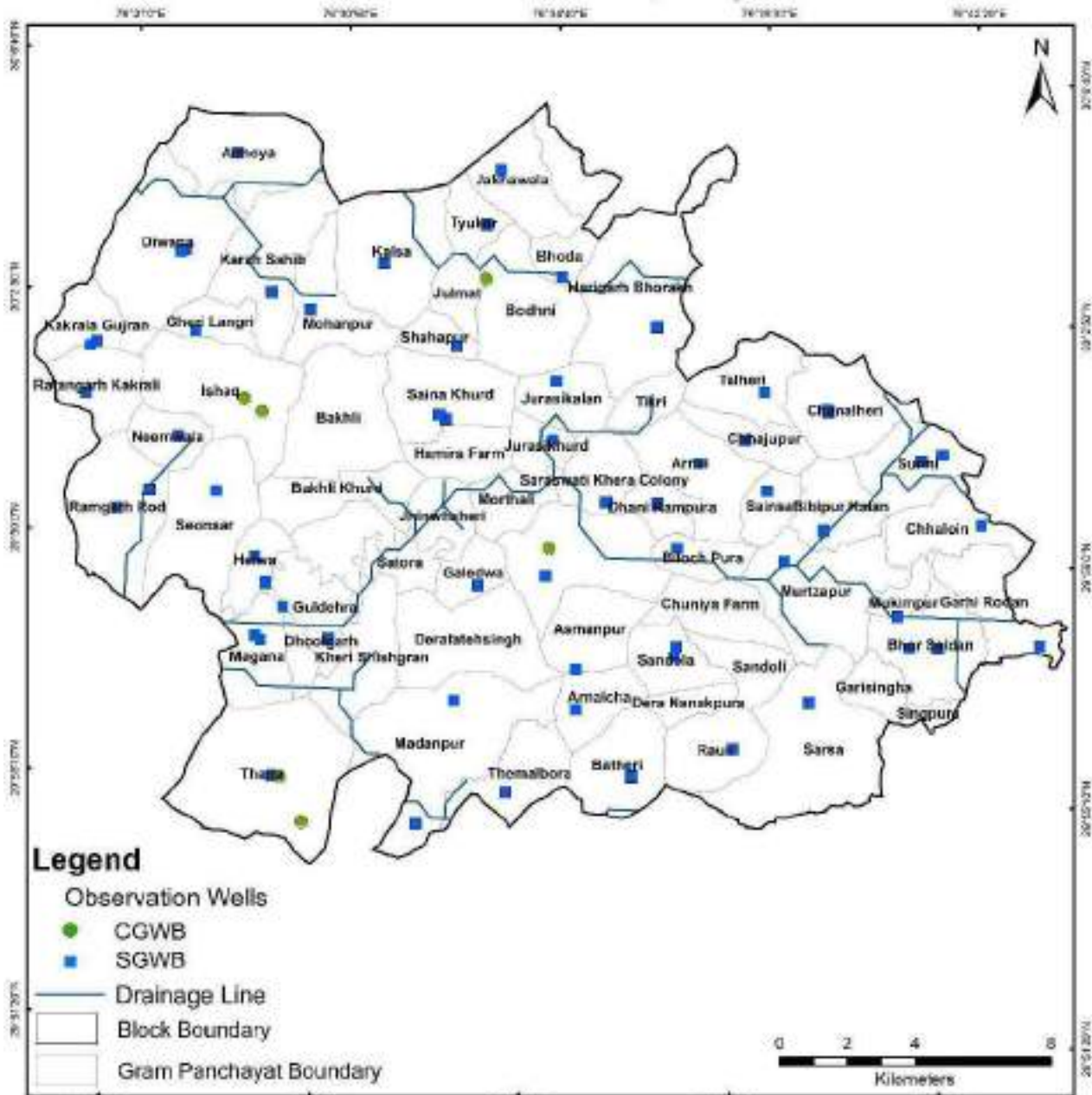
	block/taluk (2022)							
8.	Category of block/taluk/ in previous assessments	2020	2017	2013	2011	2009	2004	
		Over Exploited	Over Exploited	Over Exploited	Over Exploited	Over Exploited	Over Exploited	Over Exploited

I	WATER-RELATED SCHEMES							
1.	Schemes with a bearing on ground water, being implemented in the block / taluk.							
	Centrally Sponsored /Central Sector Schemes		i)	PMKSY				
			ii)	JJM				
			iii)	RKVY				
			iv)	MGNREGA				
	State Schemes		i)	State Plan Scheme (Head 2402)				
			ii)	MPMV				
			iii)					
			iv)					

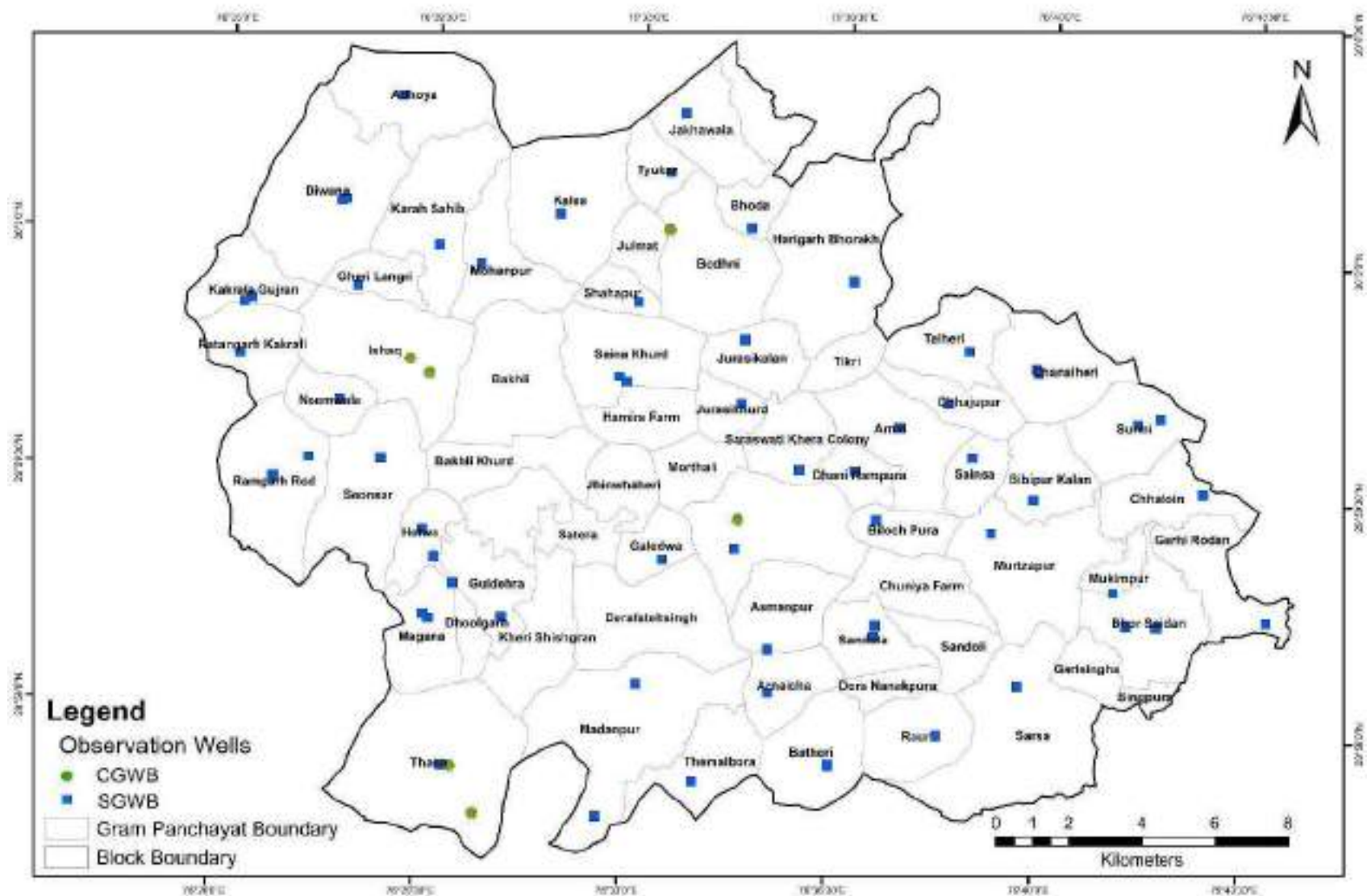
J	GROUND WATER RELATED ISSUES							
1.	Ground water related issues of the block/							
	i) Issues related to GW availability	:	Groundwater depletion in areas with Industries					
	ii) Issues related to GW quality	:	Generally, it is suitable for drinking purposes as chemical parameters are well within the permissible limits for safe drinking water set by Bureau of Indian standard (BIS)					
	iii) Other issues if any.	:						

K	ANNEXURES							
I	Basic data of observation wells – Attached							
II.	Historical water level data – Attached							
III.	Historical water quality data – Attached							

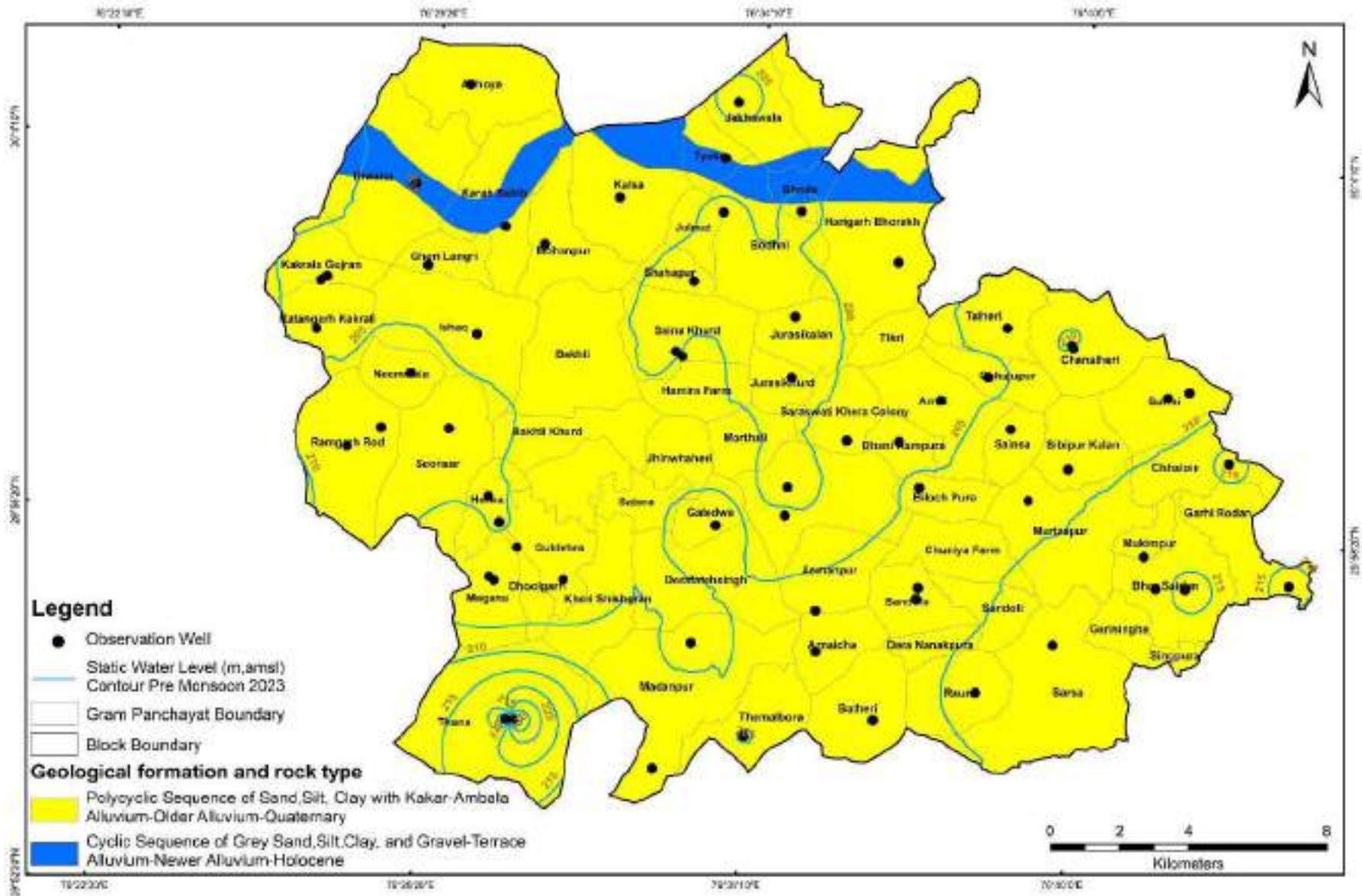
Location Map of Block- Pehowa, District- Kurukshetra, Haryana



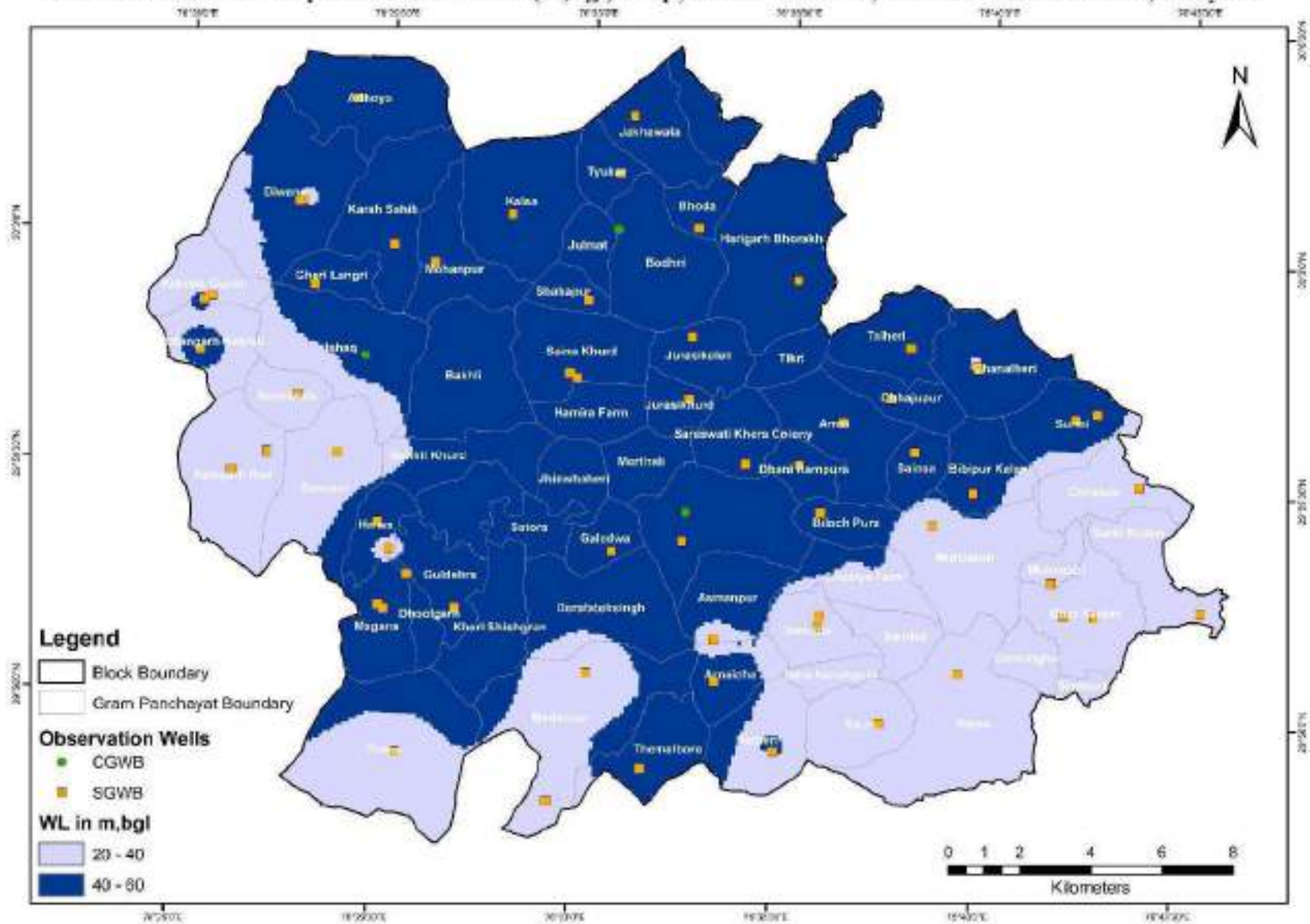
Location of Observation Wells for Monitoring Water Levels and Water Quality, Block-Pehowa, District- Kurukshetra, Haryana



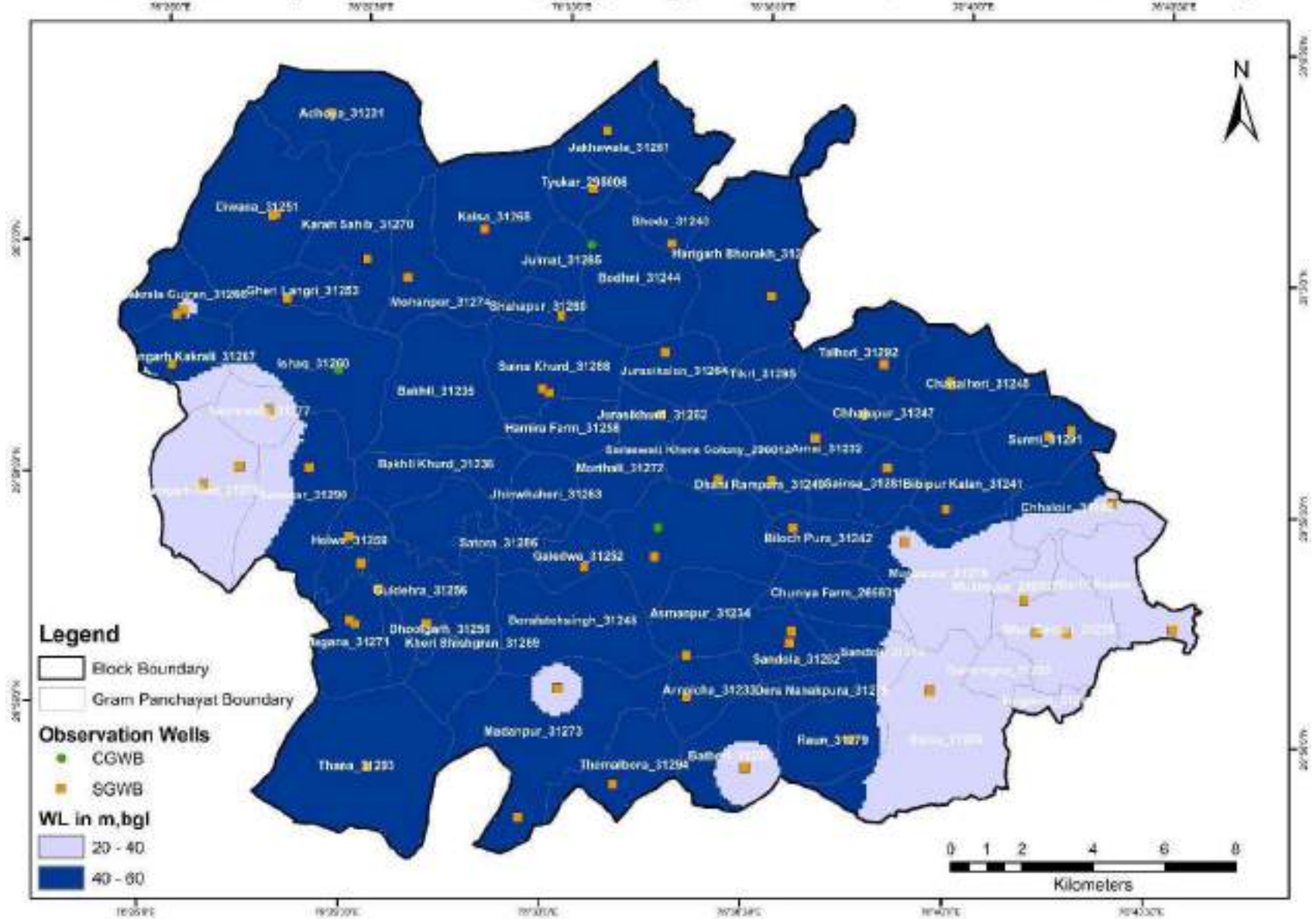
Hydrogeological Map, Block- Pehowa, District- Kurukshetra, Haryana



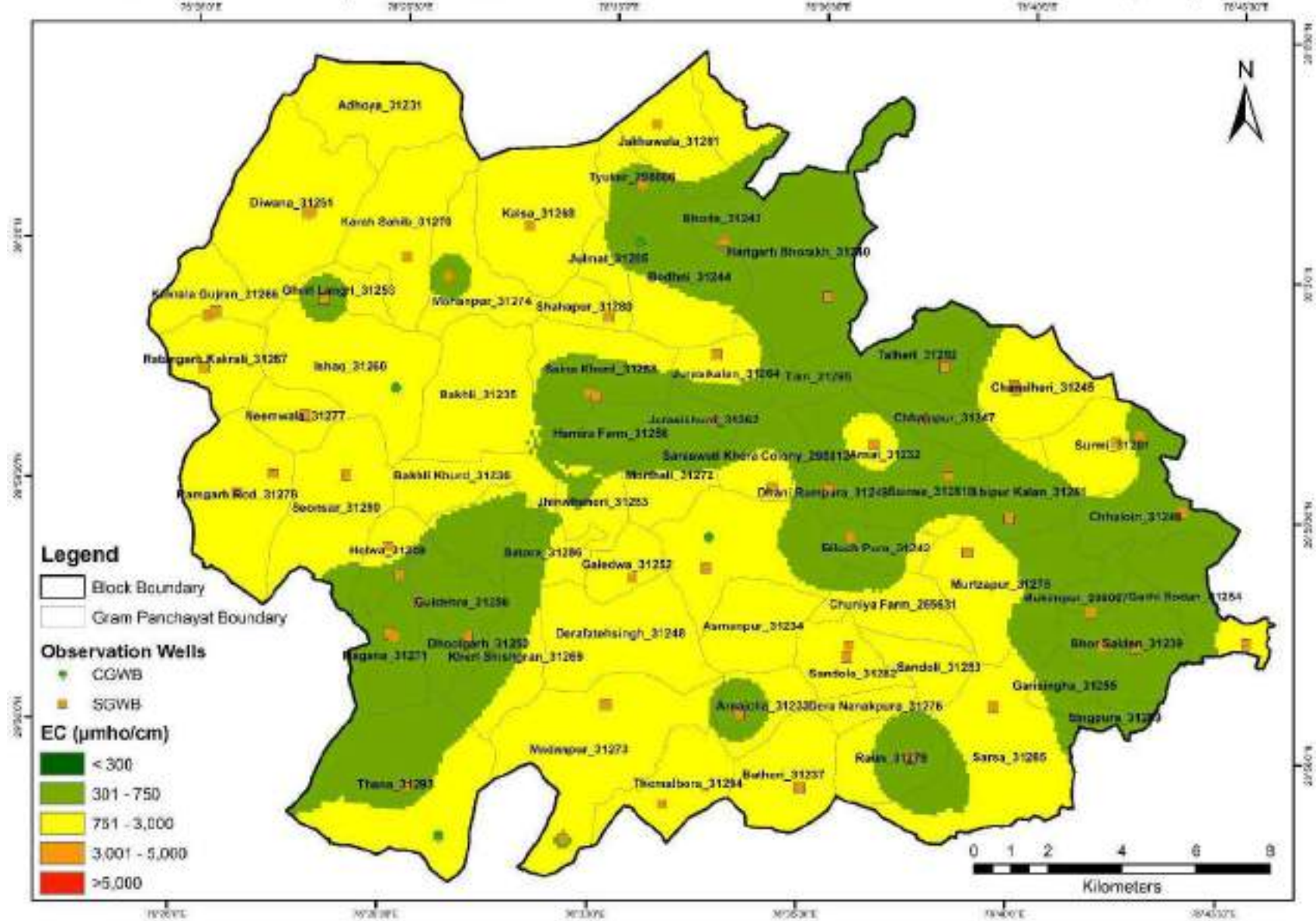
Pre Monsoon 2023 Depth to Water Level (m,bgl) Map, Block - Pehowa, District - Kurukshetra, Haryana



Post Monsoon 2023 Depth to Water Level (m,bgl) Map, Block - Pehowa, District - Kurukshetra, Haryana



Electrical Conductivity of Groundwater-2023, Block - Pehowa, District - Kurukshetra, Haryana



ANNEXURE: 1
BASIC DATA OF MONITORING WELLS

State		Haryana			District		Kurukshetra				Block			Pehowa	
S.No	Well ID	GP Name	Name of the village	Site Name	Latitude	Longitude	Type of Well (DW/Pz)	Reduced Level (m.asl)	Aquifer Type/Lithology	Height of Measuring (m.agl)	Depth (m,bgl)	Diameter (m)	Purpose of Monitoring (WL/WQ)	Monitoring Mechanism	Agency
1	Ch_30.022_76.664	Chanalheri_31245	Chanalheri	In the Village	30.022195	76.664476	TW	247.5	Unconfined to Semi Confined	0.7	120	0.254	Both	Manual	SG WB
2	Di_30.059_76.466	Diwana_31251	Diwana	In the Village	30.0587	76.46628	TW	244	Unconfined to Semi Confined	0.7	80	0.254	Both	Manual	SG WB
3	Ga_29.973_76.56	Galedwa_31252	Galedwa	In the Village	29.972662	76.559589	TW	242.5	Unconfined to Semi Confined	0.7	100	0.254	Both	Manual	SG WB
4	Ga_29.962_76.731	Garhi Rodan_31254	Garhi Roran	In Govt. Primary School	29.962256	76.731369	PZ	248.9	Unconfined and Confined	0.65	90	0.1	Both	Manual	SG WB
5	Gu_29.942_76.554	Madanpur_31273	Gumthala Garhu	In Govt. Sr. Sec. School	29.94187	76.553511	PZ	241.5	Unconfined and Confined	0.65	70	0.1	Both	Manual	SG WB
6	He_29.971_76.495	Helwa_31259	Helwa	In the Village	29.971284	76.494807	TW	257.6	Unconfined to Semi Confined	0.7	100	0.254	Both	Manual	SG WB
7	Ju_30.012_76.581	Jurasikhurd_31262	Jurasi Khurd	In the Village	30.011897	76.580547	TW	245	Unconfined to Semi Confined	0.7	100	0.254	Both	Manual	SG WB
8	Ka_30.034_76.441	Ratangarh Kakrali_31267	Kakrala	In the Village	30.03363	76.440534	TW	241.6	Unconfined to Semi Confined	0.7	100	0.254	Both	Manual	SG WB
9	Ka_30.048_76.493	Karah Sahib_31270	Karaha Sahib	In Govt. Middle School	30.048354	76.493267	PZ	244.2	Unconfined and Confined	0.65	80	0.1	Both	Manual	SG WB
10	Ma_29.956_76.494	Magana_31271	Mangna	In the Village	29.95612	76.493861	TW	240.8	Unconfined to Semi Confined	0.7	100	0.254	Both	Manual	SG WB

AtalBhujalYojana - Block Hydrogeological Report

11	Mu_29.982_76.653	Murtzapur_31275	Murtzapur	In Govt. Veterinary Hospital	29.982134	76.652618	PZ	247	Unconfined and Confined	0.65	98	0.1	Both	Manual	SG WB
12	Pe_29.976_76.58	Pehowa	Pehowa	In SDO Office, Irrig. Deptt.	29.9759	76.58	PZ	243.8	Unconfined and Confined	0.65	76	0.1	Both	Manual	SG WB
13	Ra_29.9976.448	Ramgarh Rod_31278	Ram Garh Ror	In the Village	29.989669	76.448416	TW	242	Unconfined to Semi Confined	0.7	100	0.254	Both	Manual	SG WB
14	Sa_30.016_76.548	Saina Khurd_31288	Saina Saida	In the Village	30.016315	76.547665	TW	245	Unconfined to Semi Confined	0.7	100	0.254	Both	Manual	SG WB
15	Sa_29.956_76.62	Sandola_31282	Sandhola	In the Village	29.95553	76.620153	TW	247.9	Unconfined to Semi Confined	0.7	100	0.254	Both	Manual	SG WB
16	Sa_29.945_76.662	Sarsa_31285	Sarsa	In Govt. Sr. Sec. School	29.944789	76.661517	PZ	247.3	Unconfined and Confined	0.65	70	0.1	Both	Manual	SG WB
17	Su_30.01_76.693	Surmi_31291	Surmi	In the Village	30.010113	76.693184	TW	247.9	Unconfined to Semi Confined	0.7	100	0.254	Both	Manual	SG WB
18	Te_30.068_76.558	Tyukar_298006	Teokar	In the Village	30.06838	76.558167	TW	245.4	Unconfined to Semi Confined	0.7	120	0.254	Both	Manual	SG WB
19	Th_29.92_76.499	Thana_31293	Thana	In the Village	29.920144	76.498894	TW	239.7	Unconfined to Semi Confined	0.7	100	0.254	Both	Manual	SG WB
20	Ur_30.007_76.625	Arnai_31232	Urnai	In the Village	30.007386	76.625438	TW	246.5	Unconfined to Semi Confined	0.7	110	0.254	Both	Manual	SG WB
21	Ba_29.923_76.609	Batheri_31237	Batheri (Dry)	North of the village settlement near pond	29.923391	76.608551	PZ	244.8	Unconfined to Semi Confined	0.65	90	0.1	Both	Manual	SG WB
22	Bh_29.96_76.692	Bhor Saidan_31239	Bhor Saidan	In the Village	29.960407	76.691734	TW	246.5	Unconfined to Semi Confined	0.7	100	0.254	Both	Manual	SG WB
23	Ad_30.084_76.481	Adhoya	Adhoya	In the Village	30.186667	77.035	TW	240	Unconfined and Confined	0.7	110	0.254	Both	Manual	SG WB

AtalBhujalYojana - Block Hydrogeological Report

24	W30010007629 3002	Ishaq_31260	Ishaque S	Ishaque S	30.0169 44	76.4916 67	PZ	243	Unconfine d to Semi Confined	0.73	60	0.152	Both	Manual	CG WB
25	W29590007634 5001	Pehowa I(M)	Pehowa I(M)	Pehowa (S)	29.9997 22	76.5805 56	PZ	243	Unconfine d to Semi Confined	0.75	194	0.102	Both	Manual	CG WB
26	HR_GW_445	Neemwala_31 277	Neemwa la	Govt Middle School, Neemwala	30.0092 8	76.4666 11	PZ	247	Semi- Confined To Confined	0.5	92	0.1	Both	Telemet ry	SG WB
27	HR_GW_428	Arnaicha_3123 3	Arnaicha	Govt Sr.Sec. School, Arnaicha	29.9407 72	76.5908 09	PZ	250	Semi- Confined To Confined	0.5	98	0.1	Both	Telemet ry	SG WB
28	HR_GW_444	Asmanpur_31 234	Asmanp ur	Panchayat land Asmanpur	29.9513 93	76.5903 37	PZ	246	Semi- Confined To Confined	0.5	95	0.1	WL	Telemet ry	SG WB
29	HR_GW_446	Batheri_31237	Batheri	Govt Primary School, Batheri	29.9235 98	76.6085 83	PZ	248	Semi- Confined To Confined	0.5	95	0.1	Both	Telemet ry	SG WB
30	HR_GW_429	Bhoda_31243	Bhoda	Govt. Crematorium, Bhoda	30.0552 18	76.58151 2	PZ	246	Semi- Confined To Confined	0.5	100	0.1	Both	Telemet ry	SG WB
31	HR_GW_430	Bhor Saidan_31239	Bhor Saidan	Govt.High school,Bhor saidan	29.9604 85	76.7004 26	PZ	249	Semi- Confined To Confined	0.5	99	0.1	Both	Telemet ry	SG WB
32	HR_GW_447	Bibipur Kalan_31241	Bibipur Kalan	Govt. Crematorium, Bibipur kalan	29.9907 15	76.6641 43	PZ	250	Semi- Confined To Confined	0.5	102	0.1	Both	Telemet ry	SG WB
33	HR_GW_448	Biloch Pura_31242	Bilochpu ra	Govt Middle School, Bilochpura	29.984 444	76.61987 8	PZ	246	Semi- Confined To Confined	0.5	110	0.1	Both	Telemet ry	SG WB
34	HR_GW_464	Chhajupur_31 247	Chajjup ur	Govt Primary School, Chajjupur	30.0138 65	76.6393	PZ	248	Semi- Confined To Confined	0.5	98	0.1	Both	Telemet ry	SG WB

AtalBhujalYojana - Block Hydrogeological Report

35	HR_GW_431	Chhaloin_31246	Challion	Govt Primary School, Challion	29.993597	76.712244	PZ	252	Semi-Confined To Confined	0.5	100	0.1	Both	Telemetry	SG WB
36	HR_GW_449	Chanalheri_31245	Chanalheri	Govt Middle School, Chanalheri	30.022929	76.663923	PZ	251	Semi-Confined To Confined	0.5	105	0.1	Both	Telemetry	SG WB
37	HR_GW_450	Dhani Rampura_31249	Dhani Rampura	Govt Primary School, Dhani Rampura	29.996204	76.613288	PZ	248	Semi-Confined To Confined	0.5	99	0.1	Both	Telemetry	SG WB
38	HR_GW_451	Dhoolgarh_31250	Dhoolgarh	Community Centre, Dhoolgarh	29.964997	76.500354	PZ	242	Semi-Confined To Confined	0.5	86	0.1	Both	Telemetry	SG WB
39	HR_GW_433	Diwana_31251	Diwana	Govt.High school, Diwana	30.058329	76.465218	PZ	244	Semi-Confined To Confined	0.5	108	0.1	Both	Telemetry	SG WB
40	HR_GW_453	Gheri Langri_31253	Gari Langari	Govt. Crematorium, Gari langari	30.037442	76.470558	PZ	244	Semi-Confined To Confined	0.5	107	0.1	Both	Telemetry	SG WB
41	HR_GW_452	Guldehra_31256	Guldehra	Govt.Veterinary hospital, Guldehra	29.956976	76.514601	PZ	244	Semi-Confined To Confined	0.5	107	0.1	Both	Telemetry	SG WB
42	HR_GW_454	Harigarh Borakh_31240	Harigarh Borakh	Govt Sr.Sec. School, Harigarh Borakh	30.042889	76.61108	PZ	249	Semi-Confined To Confined	0.5	109	0.1	Both	Telemetry	SG WB
43	HR_GW_455	Helwa_31259	Helwa	Govt Middle School, Helwa	29.97805	76.49122	PZ	247	Semi-Confined To Confined	0.5	106	0.1	Both	Telemetry	SG WB
44	HR_GW_435	Jakhawala_31261	Jakhawala	Govt. Crematorium, Jakhawala	30.083053	76.561662	PZ	249	Semi-Confined To Confined	0.5	110	0.1	Both	Telemetry	SG WB
45	HR_GW_436	Jurasikalan_31264	Jurasi Kalan	Panchayat land Jurasi kalan	30.027742	76.580917	PZ	245	Semi-Confined To Confined	0.5	96	0.1	Both	Telemetry	SGWB

AtalBhujalYojana - Block Hydrogeological Report

46	HR_GW_456	Kakrala Gujran_31266	Kakrala Gujrana	Govt Middle School, Kakrala gujan	30.0325 01	76.4385 74	PZ	243	Semi- Confined To Confined	0.5	110	0.1	Both	Telemet ry	SG WB
47	HR_GW_437	Kalsa_31268	Kalsa	Govt Sr.Sec. School, Kalsa	30.0570 96	76.52716 7	PZ	247	Semi- Confined To Confined	0.5	106	0.1	Both	Telemet ry	SG WB
48	HR_GW_438	Madanpur_31 273	Madanp ur	Panchayat land, Madanpur	29.9087 91	76.5433	PZ	245	Semi- Confined To Confined	0.5	108	0.1	Both	Telemet ry	SG WB
49	HR_GW_439	Magana_31271	Mangan a	Govt Middle School, Mangana	29.9571 23	76.4922 74	PZ	245	Semi- Confined To Confined	0.5	103	0.1	Both	Telemet ry	SG WB
50	HR_GW_457	Mohanpur_31 274	Mohanp ur	Govt Middle School, Mohanpur	30.0441 54	76.5052 36	PZ	245	Semi- Confined To Confined	0.5	108	0.1	Both	Telemet ry	SG WB
51	HR_GW_459	Mukimpur_29 8007	Mukimp ura	Govt Primary School, Mukimpura	29.9685 74	76.6877 56	PZ	246	Semi- Confined To Confined	0.5	100	0.1	Both	Telemet ry	SG WB
52	HR_GW_460	Ramgarh Rod_31278	Ram Garh Rod	Govt Middle School, Ramgarh rod	29.9947 39	76.4583 65	PZ	244	Semi- Confined To Confined	0.5	106	0.1	Both	Telemet ry	SG WB
53	HR_GW_440	Ratangarh Kakrali_31267	Rattan Garh Kakrali	Govt Middle School, Ratangarh kakrali	30.0198 42	76.4379 09	PZ	244	Semi- Confined To Confined	0.5	91	0.1	Both	Telemet ry	SG WB
54	HR_GW_441	Raun_31279	Ruan	Govt.High school,Ruan	29.9317 14	76.6389 85	PZ	250	Semi- Confined To Confined	0.5	97	0.1	Both	Telemet ry	SG WB
55	HR_GW_442	Saina Khurd_31288	Saina Saida	Govt Middle School, Saina Khurd	30.0174 84	76.5456 19	PZ	241	Semi- Confined To Confined	0.5	107	0.1	WL	Telemet ry	SG WB
56	HR_GW_461	Sainsa_31281	Sainsa	Govt Middle School, Sainsa	30.0005 9	76.64662 3	PZ	250	Semi- Confined To Confined	0.5	97	0.1	Both	Telemetr y	SGW B

AtalBhujalYojana - Block Hydrogeological Report

57	HR_GW_462	Sandola_31282	Sandhola	Gram Sachivalay, Sandhola	29.958379	76.620605	PZ	246	Semi-Confined To Confined	0.5	103	0.1	Both	Telemetry	SG WB
58	HR_GW_463	Saraswati Khera Colony_298012	Saraswati Khera	Govt Primary School, Saraswati khera	29.996011	76.597663	PZ	244	Semi-Confined To Confined	0.5	96	0.1	Both	Telemetry	SG WB
59	HR_GW_465	Seonsar_31290	Seonsar	Govt Sr.Sec. School, Seonsar	29.995183	76.478715	PZ	246	Semi-Confined To Confined	0.5	106	0.1	Both	Telemetry	SG WB
60	HR_GW_466	Shahapur_31280	Shahapur	Govt Middle School, Shahpur	30.035991	76.550273	PZ	244	Semi-Confined To Confined	0.5	106	0.1	Both	Telemetry	SG WB
61	HR_GW_443	Surmi_31291	Surmi	Govt Primary School, Surmi	30.011762	76.699537	PZ	249	Semi-Confined To Confined	0.5	103	0.1	Both	Telemetry	SG WB
62	HR_GW_432	Talheri_31292	Talheri	Govt Sr.Sec. School, Talheri	30.026831	76.644584	PZ	251	Semi-Confined To Confined	0.5	101	0.1	Both	Telemetry	SG WB
63	HR_GW_467	Themalbora_31294	Thenmal Bora	Govt. Crematorium, Thenmal bora	29.918132	76.570292	PZ	246	Semi-Confined To Confined	0.5	93	0.1	Both	Telemetry	SG WB
64	W300315076333001	Bodhni_31244	Bodhni	Bodhni-Pz	30.0542	76.5583	PZ	NA	Unconfined to Semi Confined	0.5	152	0.1	WL	Telemetry	CG WB
65	W300315076333001	Bodhni_31244	Bodhni	Bodhni	30.054167	76.558333	Tube Well	247	Alluvium	1	NA	0.152	WQ	Manual	CG WB
66	W300245076380002	Malikpur	Malikpur	Malikpur	30.045833	76.633333	Tube Well	225	Alluvium	0.6	NA	0.152	WQ	Manual	CG WB
67	W295512076300501	Thana_31293	Thana	Thana	29.908333	76.508333	Tube Well	NA	Alluvium	NA	NA	NA	WQ	Manual	CG WB

ANNEXURE: 2
WATER LEVEL (WL) DATA OF MONITORING WELLS

State	Haryana	District	Kurukshetra	Block	Pehowa
Month of Pre-monsoon Water Level Measurement					June
Month of Post-monsoon water Level measurement					October

S.No.	Observation Point	Source	Well Types	Co-ordinate		Water Level (m)																	
				Latitude	Longitude	2015		2016		2017		2018		2019		2020		2021		2022		2023	
						Pre	Post	Pre	Post	Pre	Post	Pre	Post	Pre	Post	Pre	Post	Pre	Post	Pre	Post	Pre	Post
1	Chanalheri_31245	SGWB	TW	30.0222	76.66448	36.8	38.5	38.8	40.1	40.9	41.5	42.6	44.2	43.8	44.8	45.2	44.8	44.8	42.9	43.7	43.02	45.8	
2	Diwana_31251	SGWB	TW	30.0587	76.46628	27.8	30.1	29.8	31.31	31.9	32.5	33.5	35.1	35.6	36.1	36.4	38.3	38.1	39.4	37.5	39.2	39.25	42.17
3	Galedwa_31252	SGWB	TW	29.97266	76.55959	39.2	41.1	40.6	42.1	42.3	42.8	43.9	45.4	44.5	43.8	44.4	45.4	43.8	44.9	43.1	44.8	43.4	44.1
4	Garhi Rodan_31254	SGWB	PZ	29.96226	76.73137	28.9	29.1	29.5	30.6	31.2	31.9	32.9	33.3	33.2	34.7	34.6	33.1	34.4	32.5	34.1	33.5	35.2	
5	Madanpur_31273	SGWB	PZ	29.94187	76.55351	32.7	34.1	33.8	35.2	36.3	36.8	37.5	39.5	38.3	39.8	39.6	39.6	38.1	38.1	37.1	37.5	37.8	39
6	Helwa_31259	SGWB	TW	29.97128	76.49481	31.5	33.5	33.4	32.8	35.4	35.9	36.7	38.2	38.9	39.2	37.8	39.3	38.1	39.6	38.9	40.6	39.25	42.92
7	Jurasikhurd_31262	SGWB	TW	30.0119	76.58055	39.2	41.5	40.5	41.1	41.5	42.1	43.1	44.8	44.3	46.2	43.7	45.6	45.5	46.9	45.9	47.7	46.2	46.8
8	Ratangarh Kakrali_31267	SGWB	TW	30.03363	76.44053	34.1	36.2	36.1	37.7	38.2	38.9	39.9	41.3	40.4	40.4	39.6	39.6	38.1	38.2	36.2	36.4	37.7	38.1
9	Karah Sahib_31270	SGWB	PZ	30.04835	76.49327	30.8	32.1	32.1	33.5	34.1	34.6	35.6	37.6	37.3	39.3	38.5	40.4	39.1	40.8	39.2	40.8	40.65	41.9
10	Magana_31271	SGWB	TW	29.95612	76.49386	31.4	33.7	32.9	34.1	35.1	35.7	36.7	38.2	38.1	40.4	39.3	41.1	39.4	40.6	39.7	41.6	40.85	41.8
11	Murtzapur_31275	SGWB	PZ	29.98213	76.65262	29.3	31.2	31.3	32.5	32.6	33.3	34.3	36.3	35.3	37.1	35.8	37.8	36.6	38.5	36.6	38.4	38.2	39.5

AtalBhujalYojana - Block Hydrogeological Report

12	Pehowa	SG WB	PZ	29.975 9	76.58	38. 7	40	40. 1	41. 3	42. 1	42. 7	43.7	45. 6	44	44. 8	43. 6	45. 7	44. 9	46. 7	45. 3	47. 2	45. 55	46.2
13	Ramgarh Rod_31278	SG WB	TW	29.989 67	76.4484 2	27. 6	29. 1	29. 1	30. 8	31	31. 7	32.7	34. 3	33. 8	34. 4	34	34. 8	33. 3	34. 7	34. 2	35. 3	34. 52	34.18
14	Saina Khurd_31288	SG WB	TW	30.016 32	76.5476 7	34. 1	36. 2	36. 1	37. 6	38	38. 9	39.9	41. 5	41. 9	43. 8	42. 7	42. 7	41	42. 7	42. 3	42. 6	42. 23	44.3
15	Sandola_3128 2	SG WB	TW	29.955 53	76.6201 5	33. 4	34. 2	35. 2	36. 9	36. 7	37	38	39. 5	39. 9	41. 8	39. 3	41. 3	39. 5	39. 6	37. 7	38. 9	38.6 3	44.3
16	Sarsa_31285	SG WB	PZ	29.944 79	76.6615 2	31. 3	32. 8	32. 7	34	34. 7	35. 2	36.3	37. 3	36. 7	37. 5	35. 6	37. 5	36. 3	37. 9	36. 2	38	37.3 2	39.2
17	Surmi_31291	SG WB	TW	30.010 11	76.6931 8	33. 2	35. 8	35. 2	35. 7	36. 6	37. 1	38.1	39. 7	40. 1	41. 2	41. 3	42. 4	40. 9	41. 8	39. 9	39. 9	40. 8	44.7
18	Tyukar_2980 06	SG WB	TW	30.068 38	76.5581 7	34. 5	35. 1	35. 1	34. 9	36. 5	36. 9	37.8	39. 5	39. 2	40. 6	40. 3	41. 5	40. 9	42. 1	41. 1	42. 5	41.5 5	42.8
19	Thana_31293	SG WB	TW	29.920 14	76.4988 9	32. 2	34. 6	34. 2	36. 1	36. 2	36. 7	38	39. 5	39. 2	40. 1	38. 7	39. 8	38. 3	40. 2	38. 4	40. 1	39. 28	41
20	Arnai_31232	SG WB	TW	30.007 39	76.6254 4	37. 1	39. 2	38. 4	39. 8	40. 3	40. 9	41.9	43. 3	43. 8	44. 9	44. 2	46	46	46. 9	45. 4	47	45. 06	46.1
21	Ishaq_31260	CG WB	PZ	30.016 94	76.4916 7	29. 9	32. 6	32. 2	34	33. 6	35. 2	34.9	38. 3	36. 2	27. 8	41	39. 5	39	39. 7	38. 8	40. 1	40. 38	41.69
22	Morthali_312 72	CG WB	PZ	29.999 72	76.5805 6	32. 7	38. 1	38. 1	39. 4	37. 4	42. 3	38.3	40. 5	40. 2	42. 3	42. 6	44. 4	NA	NA	36. 3	39. 7	46. 6	45.44
23	Batheri_31237	SG WB	PZ	29.923 39	76.6085 5	31. 3	33. 2	33. 2	34. 9	35. 5	36. 1	37.1	39. 1	39. 1	39. 9	39. 6	39. 6	38	38. 1	37. 7	38	39.5 1	39.33
24	Bhor Saidan_31239	SG WB	TW	29.960 41	76.6917 3	29. 9	30. 8	31. 1	42	33	34	34.9	36. 4	36. 8	37. 6	35. 7	36	34. 5	35. 2	33. 4	34. 8	33.3 6	25.3
25	Adhoya_31231	SG WB	TW	30.084 87	76.4811 7	34. 1	36. 1	36. 6	38. 1	39. 1	39. 8	40. 9	42. 9	42	42. 7	41. 3	43. 8	42. 4	42. 6	40. 7	42. 6	42.1 6	43.2
64	Bodhni_31244	CG WB	PZ	30.054 2	76.5583	33. 3	34. 9	35. 8	35. 9	35. 4	NA	36.6	38. 9	N A	40. 8	42. 9	45. 4	40. 1	42. 8	40. 9	44. 7	46. 85	45.03
65	Thana_31293	CG WB	PZ	29.92	76.5013 9	35. 9	39. 3	N A	NA	36. 5	38. 9	36. 39	NA	34	40. 3	41	40. 5	39. 2	NA	40. 8	NA	NA	Abando ned
26	Neemwala_31 277	SG WB	PZ	30.009 28	76.4666 1	N A	NA	N A	NA	N A	NA	NA	NA	N A	NA	NA	NA	NA	NA	N A	NA	38.6	39.9
27	Arnaicha_312 33	SG WB	PZ	29.940 77	76.5908 1	N A	NA	N A	NA	N A	NA	NA	NA	N A	NA	NA	NA	NA	NA	N A	NA	40. 82	42.3
28	Asmanpur_31 234	SG WB	PZ	29.951 39	76.5903 4	N A	NA	N A	NA	N A	NA	NA	NA	N A	NA	NA	NA	NA	NA	N A	NA	39. 47	42.1

AtalBhujalYojana - Block Hydrogeological Report

29	Batheri_31237	SG WB	PZ	29.923 6	76.6085 8	N A	NA	N A	NA	N A	NA	NA	NA	N A	NA	NA	NA	NA	NA	N A	NA	40. 51	39.48
30	Bhoda_31243	SG WB	PZ	30.055 22	76.5815 1	N A	NA	N A	NA	N A	NA	NA	NA	N A	NA	NA	NA	NA	NA	N A	NA	46. 46	44.2
31	Bhor Saidan_31239	SG WB	PZ	29.960 49	76.7004 3	N A	NA	N A	NA	N A	NA	NA	NA	N A	NA	NA	NA	NA	NA	N A	NA	32.7 3	34.98
32	Bibipur Kalan_31241	SG WB	PZ	29.990 72	76.6641 4	N A	NA	N A	NA	N A	NA	NA	NA	N A	NA	NA	NA	NA	NA	N A	NA	41.1 5	40.95
33	Biloch Pura_31242	SG WB	PZ	29.984 44	76.6198 8	N A	NA	N A	NA	N A	NA	NA	NA	N A	NA	NA	NA	NA	NA	N A	NA	39. 98	43.1
34	Chhajupur_31 247	SG WB	PZ	30.013 87	76.6393	N A	NA	N A	NA	N A	NA	NA	NA	N A	NA	NA	NA	NA	NA	N A	NA	44. 7	45.1
35	Chhaloin_312 46	SG WB	PZ	29.993 6	76.7122 4	N A	NA	N A	NA	N A	NA	NA	NA	N A	NA	NA	NA	NA	NA	N A	NA	36.1 2	39.86
36	Chanalheri_31 245	SG WB	PZ	30.022 93	76.6639 2	N A	NA	N A	NA	N A	NA	NA	NA	N A	NA	NA	NA	NA	NA	N A	NA	38.1 7	46.24
37	Dhani Rampura_312 49	SG WB	PZ	29.996 2	76.6132 9	N A	NA	N A	NA	N A	NA	NA	NA	N A	NA	NA	NA	NA	NA	N A	NA	46.1 2	46.49
38	Dhoolgarh_31 250	SG WB	PZ	29.965	76.5003 5	N A	NA	N A	NA	N A	NA	NA	NA	N A	NA	NA	NA	NA	NA	N A	NA	40. 85	42.17
39	Diwana_31251	SG WB	PZ	30.058 33	76.4652 2	N A	NA	N A	NA	N A	NA	NA	NA	N A	NA	NA	NA	NA	NA	N A	NA	41.0 1	40.75
40	Gheri Langri_31253	SG WB	PZ	30.037 44	76.4705 6	N A	NA	N A	NA	N A	NA	NA	NA	N A	NA	NA	NA	NA	NA	N A	NA	40. 93	41.6
41	Guldehra_312 56	SG WB	PZ	29.956 98	76.5146	N A	NA	N A	NA	N A	NA	NA	NA	N A	NA	NA	NA	NA	NA	N A	NA	42. 72	43.24
42	Harigarh Bhorakh_3124 0	SG WB	PZ	30.042 89	76.6110 8	N A	NA	N A	NA	N A	NA	NA	NA	N A	NA	NA	NA	NA	NA	N A	NA	44	45.22
43	Helwa_31259	SG WB	PZ	29.978 05	76.4912 2	N A	NA	N A	NA	N A	NA	NA	NA	N A	NA	NA	NA	NA	NA	N A	NA	41.5 2	43.15
44	Jakhawala_31 261	SG WB	PZ	30.083 05	76.5616 6	N A	NA	N A	NA	N A	NA	NA	NA	N A	NA	NA	NA	NA	NA	N A	NA	43	44.78
45	Jurasikalan_3 1264	SG WB	PZ	30.027 74	76.5809 2	N A	NA	N A	NA	N A	NA	NA	NA	N A	NA	NA	NA	NA	NA	N A	NA	47. 27	46.26

AtalBhujalYojana - Block Hydrogeological Report

46	Kakrala Gujran_31266	SG WB	PZ	30.032 5	76.4385 7	N A	NA	N A	NA	N A	NA	NA	NA	N A	NA	NA	NA	NA	NA	N A	NA	41.0 5	44.5
47	Kalsa_31268	SG WB	PZ	30.057 1	76.5271 7	N A	NA	N A	NA	N A	NA	NA	NA	N A	NA	NA	NA	NA	NA	N A	NA	45. 25	44.43
48	Madanpur_31 273	SG WB	PZ	29.908 79	76.5433	N A	NA	N A	NA	N A	NA	NA	NA	N A	NA	NA	NA	NA	NA	N A	NA	38.6	40.59
49	Magana_31271	SG WB	PZ	29.957 12	76.4922 7	N A	NA	N A	NA	N A	NA	NA	NA	N A	NA	NA	NA	NA	NA	N A	NA	42. 63	43.38
50	Mohanpur_31 274	SG WB	PZ	30.044 15	76.5052 4	N A	NA	N A	NA	N A	NA	NA	NA	N A	NA	NA	NA	NA	NA	N A	NA	44. 96	43.44
51	Mukimpur_2 98007	SG WB	PZ	29.968 57	76.6877 6	N A	NA	N A	NA	N A	NA	NA	NA	N A	NA	NA	NA	NA	NA	N A	NA	34.3 9	36.3
52	Ramgarh Rod_31278	SG WB	PZ	29.994 74	76.4583 7	N A	NA	N A	NA	N A	NA	NA	NA	N A	NA	NA	NA	NA	NA	N A	NA	38.6 1	34.99
53	Ratangarh Kakrali_31267	SG WB	PZ	30.019 84	76.4379 1	N A	NA	N A	NA	N A	NA	NA	NA	N A	NA	NA	NA	NA	NA	N A	NA	41.2 3	40.25
54	Raun_31279	SG WB	PZ	29.931 71	76.6389 9	N A	NA	N A	NA	N A	NA	NA	NA	N A	NA	NA	NA	NA	NA	N A	NA	37.6 3	40.36
55	Saina Khurd_31288	SG WB	PZ	30.017 48	76.5456 2	N A	NA	N A	NA	N A	NA	NA	NA	N A	NA	NA	NA	NA	NA	N A	NA	43. 55	44.46
56	Sainsa_31281	SG WB	PZ	30.000 59	76.6466 2	N A	NA	N A	NA	N A	NA	NA	NA	N A	NA	NA	NA	NA	NA	N A	NA	41.3 9	43.07
57	Sandola_3128 2	SG WB	PZ	29.958 38	76.6206 1	N A	NA	N A	NA	N A	NA	NA	NA	N A	NA	NA	NA	NA	NA	N A	NA	38.5 5	42.82
58	Saraswati Khera Colony_29801 2	SG WB	PZ	29.996 01	76.5976 6	N A	NA	N A	NA	N A	NA	NA	NA	N A	NA	NA	NA	NA	NA	N A	NA	43.7	45.75
59	Seonsar_3129 0	SG WB	PZ	29.995 18	76.4787 2	N A	NA	N A	NA	N A	NA	NA	NA	N A	NA	NA	NA	NA	NA	N A	NA	38.1 5	40.62
60	Shahapur_312 80	SG WB	PZ	30.035 99	76.5502 7	N A	NA	N A	NA	N A	NA	NA	NA	N A	NA	NA	NA	NA	NA	N A	NA	45. 05	45.15
61	Surmi_31291	SG WB	PZ	30.011 76	76.6995 4	N A	NA	N A	NA	N A	NA	NA	NA	N A	NA	NA	NA	NA	NA	N A	NA	40. 76	44.05
62	Talheri_31292	SG WB	PZ	30.026 83	76.6445 8	N A	NA	N A	NA	N A	NA	NA	NA	N A	NA	NA	NA	NA	NA	N A	NA	44	46.5

63	Themalbor3 1294	SG WB	PZ	29.918 13	76.5702 9	N A	NA	N A	NA	N A	NA	NA	NA	NA	N A	NA	NA	NA	NA	N A	NA	41.0 6	44
----	--------------------	----------	----	--------------	--------------	--------	----	--------	----	--------	----	----	----	----	--------	----	----	----	----	--------	----	-----------	----

**ANNEXURE: 3
HISTORICAL WATER QUALITY (WQ) DATA OF MONITORING WELLS**

State	Haryana	District	Kurukshetra	Block	Pehowa
Month of Collection of samples for WQ monitoring*					June

Village	Source	Type of well	Latitude	Longitude	Year	pH	EC	TDS	TH	Ca	Mg	Na	K	CO ₃	HCO ₃	SO ₄	Cl	F	NO ₃	
Bodhni	CGWB	Tw	30.05416667	76.55833333	2015	8.48	832	ND	194.0	28.6	29.8	115.0	8.8	58.5	321.3	18.0	48.6	0.61	1.01	
Bodhni	CGWB	Tw	30.05416667	76.55833333	2016	8.68	525	ND	142.9	20.4	22.3	86.0	3.2	60.0	219.7	28.0	13.9	0.37	0.00	
Bodhni	CGWB	Tw	30.05416667	76.55833333	2017	8.19	915	ND	320.0	54.0	45.0	92.0	5.8	0.0	488.0	40.0	56.0	0.53	0.71	
Bodhni	CGWB	Tw	30.05416667	76.55833333	2018	8.27	706	ND	160.0	16.0	29.0	120.0	2.4	0.0	354.0	40.0	43.0	0.46	29.00	
Bodhni	CGWB	Tw	30.05416667	76.55833333	2019	8.94	961	ND	200.0	8.0	44.0	137.0	4.2	72.0	342.0	6.7	57.0	0.75	6.57	
Bodhni	CGWB	Tw	30.05416667	76.55833333	2020	8.48	718	ND	170.1	12.0	34.0	85.0	13.0	36.0	256.3	0.0	42.5	0.08	37.00	
Bodhni	CGWB	Tw	30.05416667	76.55833333	2021	8.68	570	ND	98.6	17.6	13.3	94.0	4.2	48.0	219.7	0.0	26.7	0.58	0.80	
Bodhni	CGWB	Tw	30.05416667	76.55833333	2022	8.44	571	ND	100.0	16.0	14.6	88.0	6.1	36.0	238.0	0.0	35.0	0.62	1.20	
Bodhni	CGWB	Tw	30.05416667	76.55833333	2023	8.09	660	ND	130.0	20.0	19.5	111.2	3.9	0.0	402.6	0.0	28.4	0.85	0.00	
Ishaque	CGWB	Tw	30.01666667	76.49166667	2015	8.25	860	ND	102.1	16.4	14.9	160.0	5.6	0.0	404.6	65.0	34.7	1.20	1.91	
Ishaque	CGWB	Tw	30.01666667	76.49166667	2016	8.48	830	ND	132.7	24.5	17.4	150.0	5.2	48.0	268.5	98.0	34.7	1.60	2.74	
Ishaque	CGWB	Tw	30.01666667	76.49166667	2017	8.48	865	ND	155.0	25.0	22.0	160.0	4.0	67.0	306.0	90.0	28.0	1.10	0.94	
Ishaque	CGWB	Tw	30.01666667	76.49166667	2018	8.91	903	ND	110.0	16.0	17.0	178.0	2.2	60.0	281.0	80.0	50.0	1.30	5.66	
Ishaque	CGWB	Tw	30.01666667	76.49166667	2019	8.87	774	ND	100.0	8.0	20.0	145.0	1.0	48.0	305.0	8.6	50.0	0.12	0.62	
Ishaque	CGWB	Tw	30.01666667	76.49166667	2020	Sample not collected from this location														
Ishaque	CGWB	Tw	30.01666667	76.49166667	2021	8.72	927	ND	197.3	35.1	26.6	124.0	4.4	60.0	292.9	27.0	46.7	1.12	32.00	
Ishaque	CGWB	Tw	30.01666667	76.49166667	2022	8.49	814	ND	150.0	16.0	27.0	153.0	3.2	60.0	397.0	0.0	35.0	1.13	5.30	

AtalBhujalYojana - Block Hydrogeological Report

Ishaque	CGWB	Tw	30.01666667	76.49166667	2023	8.04	1456	ND	300.0	40.0	48.6	215.3	8.9	0.0	756.4	0.0	99.4	1.20	12.80	
Malikpur	CGWB	Tw	30.04583333	76.63333333	2015	8.56	642	ND	163.3	20.4	27.3	88.0	6.3	70.2	238.0	18.0	17.4	0.35	2.80	
Malikpur	CGWB	Tw	30.04583333	76.63333333	2016	8.65	598	ND	142.9	20.4	22.3	85.0	15.0	60.0	231.9	ND	27.8	0.61	17.00	
Malikpur	CGWB	Tw	30.04583333	76.63333333	2017	8.1	515	ND	175.0	33.0	22.0	54.0	5.3	0.0	325.0	20.0	7.1	0.35	BDL	
Malikpur	CGWB	Tw	30.04583333	76.63333333	2018	8.25	505	ND	160.0	24.0	24.0	61.0	2.6	0.0	293.0	12.0	28.0	0.24	0.20	
Malikpur	CGWB	Tw	30.04583333	76.63333333	2019	Sample not collected from this location														
Malikpur	CGWB	Tw	30.04583333	76.63333333	2020	8.67	925	ND	250.2	52.1	29.2	112.0	14.0	48.0	195.3	47.0	92.2	0.24	97.00	
Malikpur	CGWB	Tw	30.04583333	76.63333333	2021	8.8	713	ND	150.1	20.0	24.3	121.0	13.0	57.0	324.6	14.0	26.7	0.55	16.00	
Malikpur	CGWB	Tw	30.04583333	76.63333333	2022	8.41	507	ND	120.0	16.0	19.5	82.0	8.4	24.0	268.0	0.0	21.0	0.61	11.00	
Malikpur	CGWB	Tw	30.04583333	76.63333333	2023	Sample not collected from this location														
Pehowa	CGWB	Dw	30.232	76.8334	2015	8.4	560	ND	204.2	36.8	27.3	36.0	3.5	35.1	178.5	5.0	41.7	0.34	0.34	
Pehowa	CGWB	Dw	30.232	76.8334	2016	8.4	511	ND	214.4	20.4	39.7	32.0	6.3	36.0	231.9	25.0	6.9	0.46	0.46	
Pehowa	CGWB	Dw	30.232	76.8334	2017	Sample not collected from this location														
Pehowa	CGWB	Dw	30.232	76.8334	2018	8.48	350	ND	120.0	20.0	17.0	37.0	1.1	36.0	134.0	ND	21.0	0.76	0.76	
Pehowa	CGWB	Dw	30.232	76.8334	2019	8.93	766	ND	180.0	12.0	36.0	113.0	1.0	84.0	256.0	7.7	43.0	0.05	5.70	
Pehowa	CGWB	Dw	30.232	76.8334	2020	8.52	1109	ND	210.2	52.1	19.5	160.0	18.0	48.0	158.7	97.0	184.3	0.30	26.00	
Pehowa	CGWB	Dw	30.232	76.8334	2021	8.47	633	ND	230.1	21.9	42.6	67.0	3.6	36.0	122.0	108.0	66.6	0.30	0.40	
Pehowa	CGWB	Dw	30.232	76.8334	2022	8.1	732	ND	224.0	21.0	41.7	71.0	6.1	0.0	238.0	72.0	71.0	0.42	0.60	
Pehowa	CGWB	Dw	30.232	76.8334	2023	7.68	900	ND	400.0	20.0	85.1	42.0	6.1	0.0	414.8	86.4	35.5	0.63	0.65	
Thana	CGWB	Tw	29.9095	76.5866	2015	8.8	1430	ND	204.2	28.6	32.2	285.0	7.6	105.3	654.4	70.0	27.8	0.42	0.42	
Thana	CGWB	Tw	29.9095	76.5866	2016	8.75	1100	ND	153.1	40.9	12.4	215.0	7.6	108.0	463.8	13.0	27.8	0.87	0.87	
Thana	CGWB	Tw	29.9095	76.5866	2017	8.27	912	ND	237.0	45.0	30.0	130.0	5.5	0.0	533.0	30.0	28.0	0.60	0.60	
Thana	CGWB	Tw	29.9095	76.5866	2018	8.94	1756	ND	200.0	8.0	44.0	369.0	16.0	96.0	537.0	264.0	85.0	1.10	1.10	
Thana	CGWB	Tw	29.9095	76.5866	2019	8.57	530	ND	190.0	16.0	36.0	51.0	2.0	24.0	159.0	6.2	70.0	0.05	28.00	
Thana	CGWB	Tw	29.9095	76.5866	2020	Sample not collected from this location														
Thana	CGWB	Tw	29.9095	76.5866	2021	8.79	970	ND	241.1	17.6	47.9	132.0	4.1	60.0	390.5	31.0	53.3	0.47	13.00	
Thana	CGWB	Tw	29.9095	76.5866	2022	8.35	944	ND	252.0	19.0	49.7	112.0	6.1	21.0	394.0	49.0	42.0	0.52	18.00	
Thana	CGWB	Tw	29.9095	76.5866	2023	8.21	943	ND	330.0	20.0	68.1	100.0	5.6	0.0	427.0	81.6	71.0	0.58	13.96	
Guldehra_31256	SGWB	Pz	29.956976	76.514601	2023	7.81	658	400	210	60	17.82	60	35	0	190	20	100	0.23	5	

AtalBhujalYojana - Block Hydrogeological Report

Biloch Pura_31242	SGWB	Pz	29.984444	76.619878	2023	8.16	490	292.19	148.01	45.35	8.44	33	10.5	0	130	23.9	80.7	0.34	21
Dhani Rampura_31249	SGWB	Pz	29.996204	76.613288	2023	7.92	428	270	140	40	10.97	40	20	0	130	12	70	0.45	5
Chhajapur_31247	SGWB	Pz	30.013865	76.6393	2023	8.08	586	384	200	50	16.46	60	30	0	180	20	100	0.34	5
Chhaloin_31246	SGWB	Pz	29.993597	76.712244	2023	8.45	595	406	210	60	16.46	65	35	0	190	20	100	0.45	5
Gheri Langri_31253	SGWB	Pz	30.037442	76.470558	2023	8.34	637	447	230	60	19.2	70	35	0	210	20	120	0.33	10
Harigarh Bhorakh_31240	SGWB	Pz	30.042889	76.61108	2023	8.88	608	370	190	50	15.09	60	30	0	170	16	100	0.66	5
Diwana_31251	SGWB	Pz	30.058329	76.465218	2023	8.01	769	432	220	60	17.83	65	35	0	200	20	110	0.97	5
Jurasikalan_31264	SGWB	Pz	30.027742	76.580917	2023	7.86	860	573	300	80	23.32	90	45	0	270	28	150	0.43	10
Kalsa_31268	SGWB	Pz	30.057096	76.527167	2023	8.04	1018	615	320	90	24.69	95	50	0	250	28	160	0.87	10
Kakrala Gujran_31266	SGWB	Pz	30.032501	76.438574	2023	8.52	877	498	260	70	20.57	80	40	0	230	24	130	0.43	10
Sainsa_31281	SGWB	Pz	30.00059	76.646623	2023	8.05	549	340.38	172.68	53.24	9.64	38.4	12.2	0	154	27.8	95	0.45	24.4
Magana_31271	SGWB	Pz	29.957123	76.492274	2023	8.37	594	401	210	60	17.82	65	35	0	190	20	100	0.32	5
Mukimpur_298007	SGWB	Pz	29.968574	76.687756	2023	8.07	679	434.56	222.02	69.02	12	49.1	15.6	0	196	35.5	121	0.32	31.2
Neemwala_31277	SGWB	Pz	30.00928	76.466611	2023	8.13	910	541	280	80	23.31	85	45	0	250	24	140	0.47	10
Jakhawala_31261	SGWB	Pz	30.083053	76.561662	2023	8.08	992	672	350	90	28.8	105	55	0	320	32	170	0.68	10
Ramgarh Rod_31278	SGWB	Pz	29.994739	76.458365	2023	8.26	845	485	250	70	19.21	75	40	0	230	24	130	0.34	10
Ratangarh Kakrali_31267	SGWB	Pz	30.019842	76.437909	2023	8.38	1324	721	370	100	30.17	110	60	0	340	32	190	0.23	10
Raun_31279	SGWB	Pz	29.931714	76.638985	2023	8.19	564	387	200	50	15.09	60	30	0	180	20	100	0.23	5
Madanpur_31273	SGWB	Pz	29.908791	76.5433	2023	8.15	745	451	230	60	17.83	70	35	0	210	20	120	0.23	10
Sandola_31282	SGWB	Pz	29.958379	76.620605	2023	8.04	821	513	270	70	21.94	80	40	0	240	24	130	0.54	10

AtalBhujalYojana - Block Hydrogeological Report

Bhor Saidan_31239	SGWB	Pz	29.960485	76.700426	2023	8.16	510	300.9	152.95	47.32	8.44	34	10.8	0	136	24.6	83.1	0.21	21.6
Bibipur Kalan_31241	SGWB	Pz	29.990715	76.664143	2023	8.17	566	332	170	50	13.72	50	25	0	160	16	90	0.32	5
Saraswati Khera Colony_298012	SGWB	Pz	29.996011	76.597663	2023	7.81	889	567	290	80	23.32	90	45	0	270	28	150	0.34	10
Chanalheri_31245	SGWB	Pz	30.022929	76.663923	2023	8.19	576	319	170	40	13.71	50	25	0	150	16	80	0.21	5
Themalhora_31294	SGWB	Pz	29.918132	76.570292	2023	8.12	1112	659	340	90	26.07	105	55	0	310	32	170	0.45	10
Arnaicha_31233	SGWB	Pz	29.940772	76.590809	2023	8.26	608	338	180	50	13.72	55	30	0	160	16	90	0.43	5
Dhoolgarh_31250	SGWB	Pz	29.964997	76.500354	2023	8.28	457	274	140	40	10.98	45	20	0	130	12	70	0.34	5
Bhoda_31243	SGWB	Pz	30.055218	76.581512	2023	8.28	614	120	220	60	16.46	65	35	0	200	20	110	0.54	5
Shahapur_31280	SGWB	Pz	30.035991	76.550273	2023	8.35	1000	706	370	100	30.17	110	55	0	330	32	180	0.65	10
Batheri_31237	SGWB	Pz	29.923598	76.608583	2023	8.35	1051	736	380	100	31.54	115	60	0	350	36	190	0.21	10
Surmi_31291	SGWB	Pz	30.011762	76.699537	2023	8.37	591	313	160	40	12.35	50	25	0	150	16	80	0.23	5
Talheri_31292	SGWB	Pz	30.026831	76.644584	2023	8.45	508	283	150	40	12.34	45	25	0	130	12	70	0.21	5
Mohanpur_31274	SGWB	Pz	30.044154	76.505236	2023	8.56	693	385	200	50	16.46	60	30	0	180	20	100	0.34	5
Helwa_31259	SGWB	Pz	29.97805	76.49122	2023	8.57	844	544	280	80	23.31	85	45	0	260	24	140	0.27	10
Seonsar_31290	SGWB	Pz	29.995183	76.478715	2023	8.6	821	538	280	80	21.95	85	45	0	250	24	140	0.23	10

AtalBhujalYojana - Block Hydrogeological Report

Name of District	Name of Block	Source	Name of village/ OW data	Latitude	Longitude	Value of EC June 2020	Value of EC June-2021	Value of EC June-2022	Value of EC June-2023
Kurukshetra_68	Pehowa_519	SGWB	Adhoya	30.18667	77.035	550	1000	800	800
Kurukshetra_68	Pehowa_519	SGWB	Chanalheri	30.0222	76.6645	750	800	700	1200
Kurukshetra_68	Pehowa_519	SGWB	Karaha Sahib	30.0484	76.4933	550	700	700	800
Kurukshetra_68	Pehowa_519	SGWB	Ram GarhRor	29.9897	76.4484	1050	800	900	1100
Kurukshetra_68	Pehowa_519	SGWB	GarhiRoran	29.9623	76.7314	350	500	500	800
Kurukshetra_68	Pehowa_519	SGWB	Jurasikhurd	30.0119	76.5805	400	500	500	600
Kurukshetra_68	Pehowa_519	SGWB	GumthalaGarhu	29.9419	76.5535	750	1400	1200	1300
Kurukshetra_68	Pehowa_519	SGWB	Kakrala PF Rep.	30.0336	76.4405	1100	1200	1400	1200
Kurukshetra_68	Pehowa_519	SGWB	Mangna	29.9561	76.4939	400	600	500	600
Kurukshetra_68	Pehowa_519	SGWB	Murtzapur	29.9821	76.6526	400	1500	1300	1100
Kurukshetra_68	Pehowa_519	SGWB	SainaSaida	30.0163	76.5477	450	800	600	600
Kurukshetra_68	Pehowa_519	SGWB	Sandhola Reported	29.9555	76.6202	750	1100	900	1000
Kurukshetra_68	Pehowa_519	SGWB	Sarsa	29.9448	76.6615	450	700	600	900
Kurukshetra_68	Pehowa_519	SGWB	Thana	29.9201	76.4989	400	500	500	700
Kurukshetra_68	Pehowa_519	SGWB	Urmai	30.0074	76.6254	350	800	700	900
Kurukshetra_68	Pehowa_519	SGWB	Diwana	30.0587	76.4663	550	700	700	1000
Kurukshetra_68	Pehowa_519	SGWB	Batheri (DRY)	29.9234	76.6086	1150	1000	1100	1000
Kurukshetra_68	Pehowa_519	SGWB	Galedwa	29.9727	76.5596	500	700	600	800
Kurukshetra_68	Pehowa_519	SGWB	Pehowa	29.9759	76.58	350	500	500	900
Kurukshetra_68	Pehowa_519	SGWB	BhorSaidan	29.9604	76.6917	300	500	500	600
Kurukshetra_68	Pehowa_519	SGWB	Helwa	29.9713	76.4948	400	600	600	700
Kurukshetra_68	Pehowa_519	SGWB	Teokar	30.0684	76.5582	400	500	500	700
Kurukshetra_68	Pehowa_519	SGWB	Surmi	30.0101	76.6932	500	800	800	1000
Kurukshetra_68	Pehowa_519	SGWB	Guldehra 31256	29.95698	76.5146	NA	NA	NA	658
Kurukshetra_68	Pehowa_519	SGWB	Biloch Pura 31242	29.98444	76.61988	NA	NA	NA	490
Kurukshetra_68	Pehowa_519	SGWB	Dhani Rampura 31249	29.9962	76.61329	NA	NA	NA	428
Kurukshetra_68	Pehowa_519	SGWB	Chhajupur 31247	30.01387	76.6393	NA	NA	NA	586
Kurukshetra_68	Pehowa_519	SGWB	Chhaloin 31246	29.9936	76.71224	NA	NA	NA	595
Kurukshetra_68	Pehowa_519	SGWB	Gheri Langri 31253	30.03744	76.47056	NA	NA	NA	637
Kurukshetra_68	Pehowa_519	SGWB	Harigarh Borakh 31240	30.04289	76.61108	NA	NA	NA	608
Kurukshetra_68	Pehowa_519	SGWB	Diwana 31251	30.05833	76.46522	NA	NA	NA	769
Kurukshetra_68	Pehowa_519	SGWB	Jurasikalan 31264	30.02774	76.58092	NA	NA	NA	860
Kurukshetra_68	Pehowa_519	SGWB	Kalsa 31268	30.0571	76.52717	NA	NA	NA	1018
Kurukshetra_68	Pehowa_519	SGWB	Kakrala Gujran 31266	30.0325	76.43857	NA	NA	NA	877

AtalBhujalYojana - Block Hydrogeological Report

Kurukshetra_68	Pehowa_519	SGWB	Sainsa_31281	30.00059	76.64662	NA	NA	NA	549
Kurukshetra_68	Pehowa_519	SGWB	Magana_31271	29.95712	76.49227	NA	NA	NA	594
Kurukshetra_68	Pehowa_519	SGWB	Mukimpur_298007	29.96857	76.68776	NA	NA	NA	679
Kurukshetra_68	Pehowa_519	SGWB	Neemwala_31277	30.00928	76.46661	NA	NA	NA	910
Kurukshetra_68	Pehowa_519	SGWB	Jakhawala_31261	30.08305	76.56166	NA	NA	NA	992
Kurukshetra_68	Pehowa_519	SGWB	Ramgarh Rod_31278	29.99474	76.45837	NA	NA	NA	845
Kurukshetra_68	Pehowa_519	SGWB	Ratangarh Kakrali_31267	30.01984	76.43791	NA	NA	NA	1324
Kurukshetra_68	Pehowa_519	SGWB	Raun_31279	29.93171	76.63899	NA	NA	NA	564
Kurukshetra_68	Pehowa_519	SGWB	Madanpur_31273	29.90879	76.5433	NA	NA	NA	745
Kurukshetra_68	Pehowa_519	SGWB	Sandola_31282	29.95838	76.62061	NA	NA	NA	821
Kurukshetra_68	Pehowa_519	SGWB	Bhor Saidan_31239	29.96049	76.70043	NA	NA	NA	510
Kurukshetra_68	Pehowa_519	SGWB	Bibipur Kalan_31241	29.99072	76.66414	NA	NA	NA	566
Kurukshetra_68	Pehowa_519	SGWB	Saraswati Khera Colony_298012	29.99601	76.59766	NA	NA	NA	889
Kurukshetra_68	Pehowa_519	SGWB	Chanalheri_31245	30.02293	76.66392	NA	NA	NA	576
Kurukshetra_68	Pehowa_519	SGWB	Themalbora_31294	29.91813	76.57029	NA	NA	NA	1112
Kurukshetra_68	Pehowa_519	SGWB	Arnaicha_31233	29.94077	76.59081	NA	NA	NA	608
Kurukshetra_68	Pehowa_519	SGWB	Dhoolgarh_31250	29.965	76.50035	NA	NA	NA	457
Kurukshetra_68	Pehowa_519	SGWB	Bhoda_31243	30.05522	76.58151	NA	NA	NA	614
Kurukshetra_68	Pehowa_519	SGWB	Shahapur_31280	30.03599	76.55027	NA	NA	NA	1000
Kurukshetra_68	Pehowa_519	SGWB	Batheri_31237	29.9236	76.60858	NA	NA	NA	1051
Kurukshetra_68	Pehowa_519	SGWB	Surmi_31291	30.01176	76.69954	NA	NA	NA	591
Kurukshetra_68	Pehowa_519	SGWB	Talheri_31292	30.02683	76.64458	NA	NA	NA	508
Kurukshetra_68	Pehowa_519	SGWB	Mohanpur_31274	30.04415	76.50524	NA	NA	NA	693
Kurukshetra_68	Pehowa_519	SGWB	Helwa_31259	29.97805	76.49122	NA	NA	NA	844
Kurukshetra_68	Pehowa_519	SGWB	Seonsar_31290	29.99518	76.47872	NA	NA	NA	821