

# ATAL BHUJAL YOJANA (AtalJal)

**State : HARYANA**

**Department : IRRIGATION & WATER  
RESOURCE DEPARTMENT**

**BLOCK : JAGADHRI**

**DISTRICT : YAMUNA NAGAR**

**YEAR : 2023-2024**

---

*Towards partial fulfilment of requirements for Disbursement of  
Incentive under DLI -1*

---

# HYDROGEOLOGICAL REPORT

## (YEAR: 2023-24)

STATE	:	HARYANA
DISTRICT	:	YAMUNA NAGAR
BLOCK/TALUK	:	JAGADHRI
BLOCK/TALUK HQs	:	JAGADHRI

A GENERAL INFORMATION					
1.	Geographical area (Ha)	:	30624.19		
2.	No. of Gram Panchayats	:	67		
3.	No. of towns	:	1		
4.	No. of villages	:	90		
5.	Population (2011)	:	Male	Female	Total
			55361	52747	108108
6.	Rainfall (mm)(2021)	:	Monsoon	Non-monsoon	Annual
			932.03	394.01	1326.04
7.	River basin	:	Yamuna river basin and partially in Ghaggar basin		
8.	Major soil types	:	Loamy Sand		

B LAND USE			
1.	Forest area (Ha) 2021	:	20
2.	Cultivable area (Ha)	:	14479.40
3.	Net sown area (Ha)	:	14439.12
4.	Gross cropped area (Ha)	:	27257

C CROPPING PATTERN (As in 2022-23)						
1.	Major crops grown	:	Kharif	Rabi	Summer	Perennial
			Paddy	Wheat	Pulses	
			Maize	Mustard	Tomato	
			Sugarcane	Sugarcane	Vegetable	
			Vegetable	Oilseeds		

D IRRIGATION FACILITIES (As in 2022-23)							
1.	Net irrigated area (Ha)	:	14437.20				
2.	Gross irrigated area (Ha)	:	24611				
3.	Area under irrigation (Ha) (Source-wise)	:	DW	BW/TW	Tanks/Ponds	Canals	Others
			-	24611	-		-

E GEOLOGY & HYDROGEOLOGY			
1.	Predominant rock type	:	Sand, Silt, Clay, Gravel and Kankar
2.	Major geological formations	:	Older and Newer Alluvium
3.	Important water-bearing formations	:	Coarse grain sand
4.	Status of coverage under NAQUIM	:	Covered

F GROUND WATER CONDITIONS								
1.	No. of wells used for WaterLevel (WL) monitoring.	:	Open wells			BW/TW/ PZ		
			CGWB	SGWB	Total	CGWB	SGWB	Total
			0	1	1	6	35	41
2.	Monitoring mechanism (Nos.)	:	Manual		DWLR		Telemetry	
			CGWB	SGWB	CGWB	SGWB	CGWB	SGWB
			6	8	0	28	0	28
3.	Monitoring frequency	:	Agency	No. of times monitored/year				
			CGWB	2 times/year Pre and Post Monsoon				
			SGWB	2 times/year Pre and Post Monsoon				
4.	Period of water level data availability.	:	Agency	Period of WL data availability (From - To)				
				From (year)		To (year)		
			CGWB	2015		2023		
			SGWB	2015		2023		
5.	Water level range (m.bgl)	:	Minimum/Village			Maximum/Village		
	Pre-monsoon (2023)		2.7/Nagawa Jagir			25.4/Golanpur		
	Post-monsoon (2023)		1.7/Kait			25.0/Golanpur		
6.	Seasonal WL fluctuation range (m)	:	Minimum/ Village			Maximum/ Village		
			-4.18/Naggal			1.1/Rattangarh		

G GROUND WATER QUALITY								
1.	No. of wells used for Water Quality (WQ) monitoring.		Open Wells			BW/TW/ PZ		
			CGWB	SGWB	Total	CGWB	SGWB	Total
			0	1	1	8	32	40
2.	Monitoring frequency		Agency	No. of times monitored/year				
			CGWB	1 time/Year				
			SGWB	1 time/Year				
3.	Period of water quality data availability		Agency	Period of WQ data availability (Years)				
			CGWB	2015 to 2023				
			SGWB	2015 to 2023				
4.	Parameters analysed		Agency	Parameters Analysed				
			CGWB	pH,EC,TH,Ca,Mg,Na,K,CO <sub>3</sub> ,HCO <sub>3</sub> , SO <sub>4</sub> ,Cl,F,NO <sub>3</sub>				
			SGWB	EC				
			SGWB New	pH, EC, TDS, TH, Ca, Mg, Na, K, CO <sub>3</sub> , HCO <sub>3</sub> , SO <sub>4</sub> , Cl, F, NO <sub>3</sub>				
5.	Known ground water quality issues, if any		No Such Issue					

H. GROUND WATER RESOURCES							
1.	Latest assessment year	2022					
2.	Assessment Unit	Block					
3.	Annual extractable GW resource (ha.m)	8639.97					
4.	Current annual GW extraction (ha.m)	13604.64					
5.	Net GW availability for future use (ha.m)	0					
6.	Stage of GW extraction	157.5%					
7.	Category of block/taluk/ (2022)	Over Exploited					
8.	Category of block/taluk/ in previous assessments	2020	2017	2013	2011	2009	2004
		Over Exploited	Over Exploited	Over Exploited	Over Exploited	Over Exploited	Over Exploited

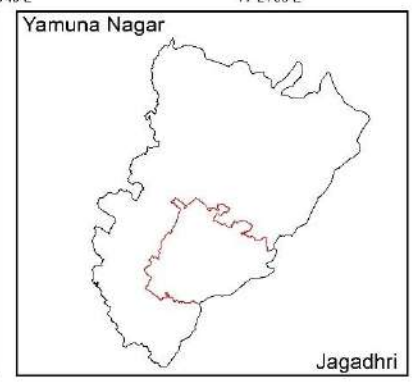
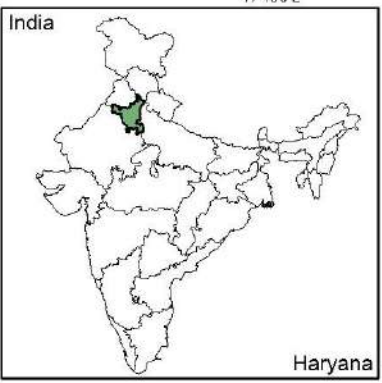
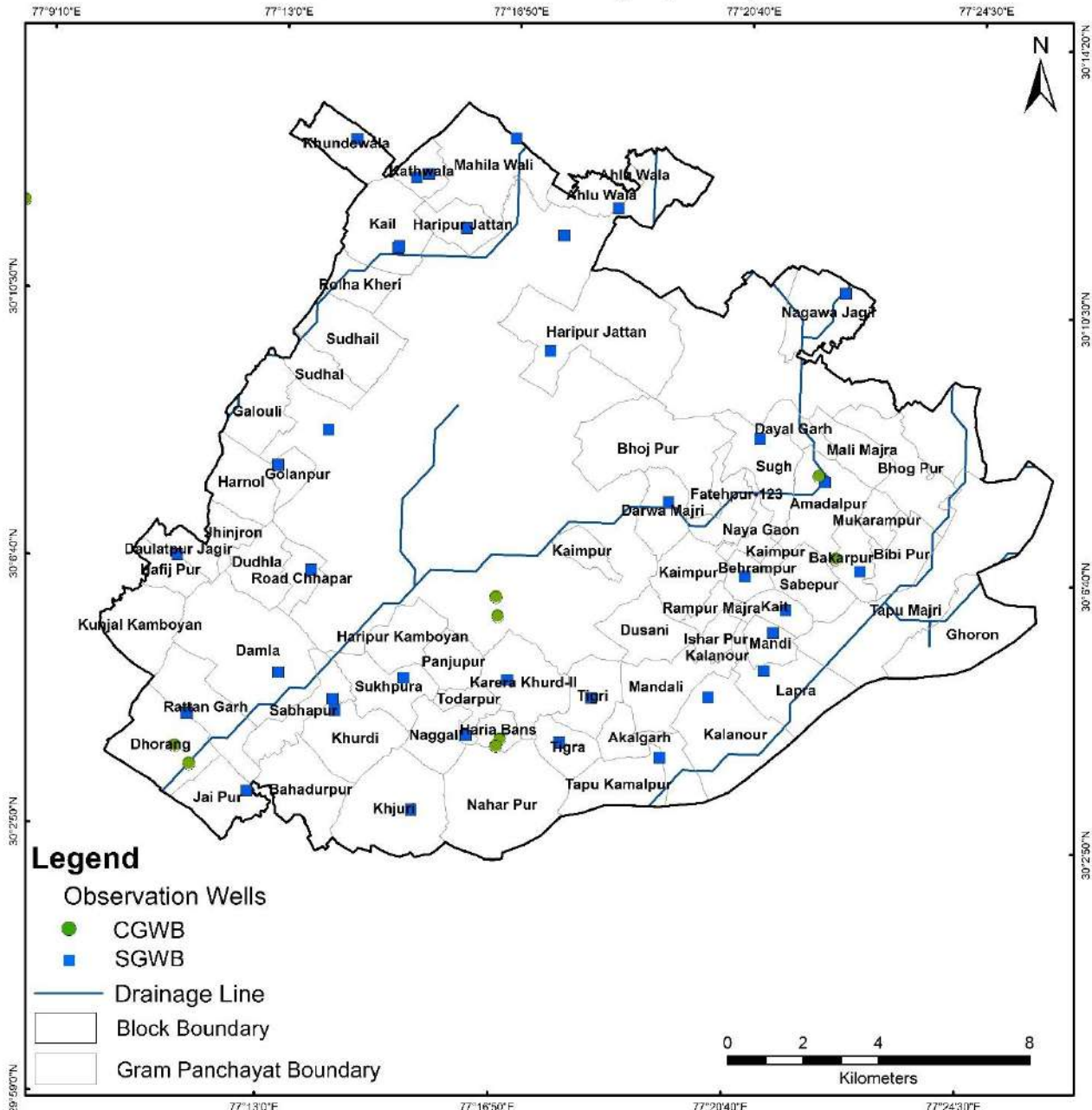
I WATER-RELATED SCHEMES							
-------------------------	--	--	--	--	--	--	--

I.	Schemes with a bearing on ground water, being implemented in the block / taluk.		
	Centrally Sponsored /Central Sector Schemes	i)	PMKSY
		ii)	MGNREGA
		iii)	RKVY
		iv)	JJM
	State Schemes	i)	State Plan Scheme for providing assistance on adopting water saving technologies (2402)
		ii)	MPMV
		iii)	
		iv)	

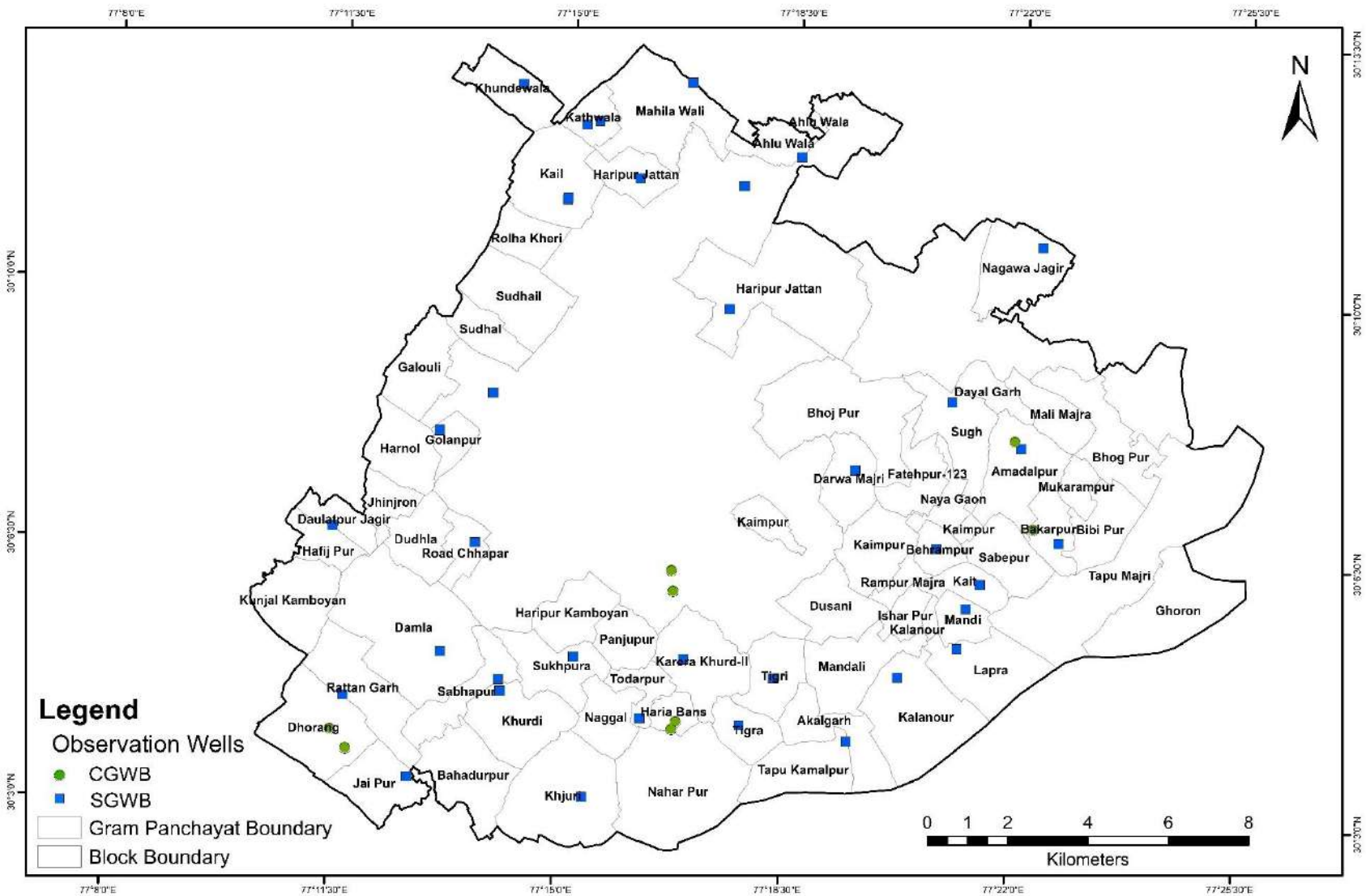
<b>J</b>	<b>GROUND WATER RELATED ISSUES</b>		
I.	Ground water related issues of the block		
	i) Issues related to GW availability	:	Due to Groundwater over exploitation subsequently the present stage of ground water extraction is 157.5%
	ii) Issues related to GW quality	:	The ground water is alkaline in nature and is of low to medium salinity.
	iii) Other issues if any.	:	No

<b>K</b>	<b>ANNEXURES</b>
I	Basic data of observation wells – Attached
II.	Historical water level data – Attached
III.	Historical water quality data – Attached

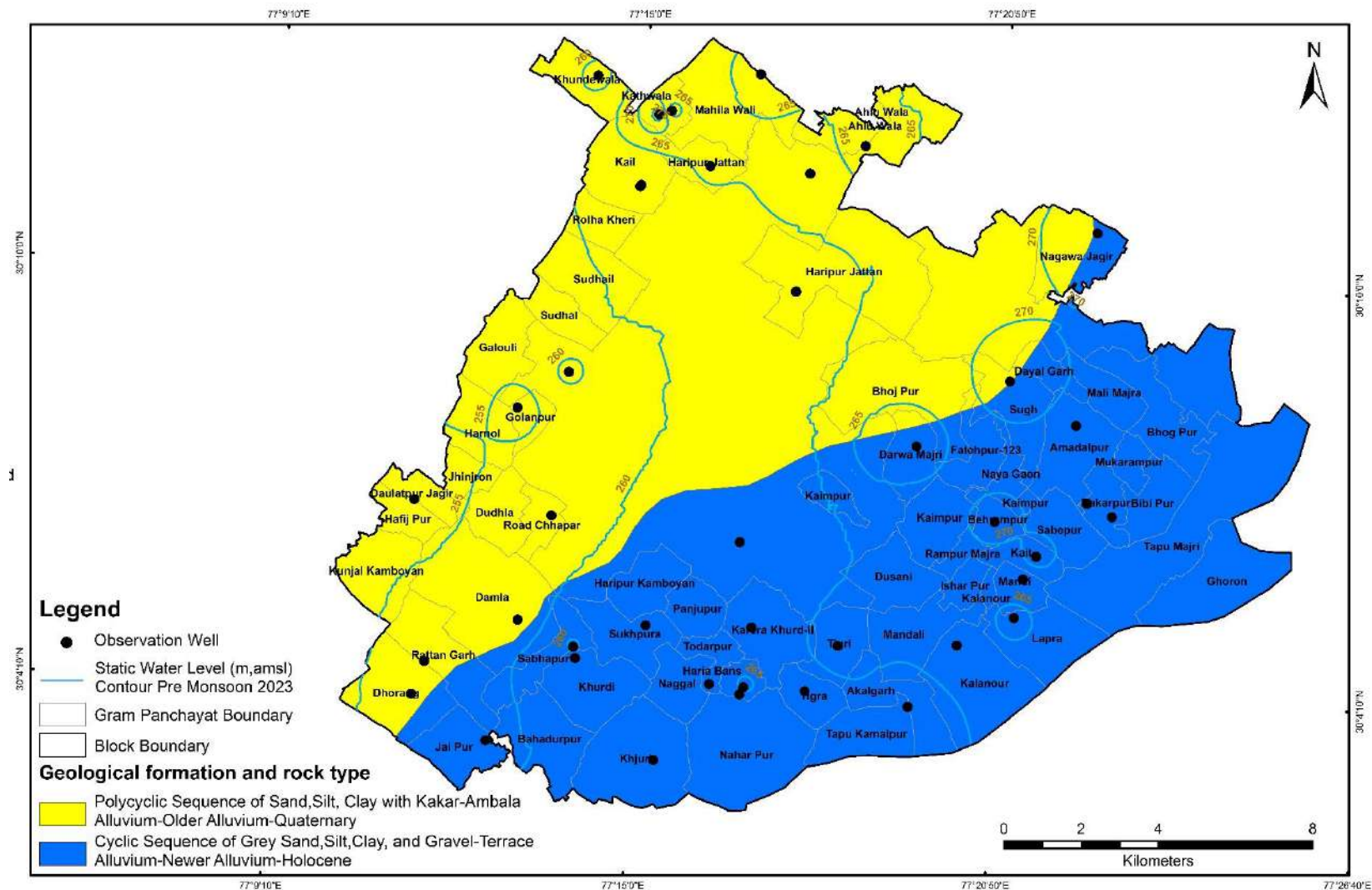
## Location Map of Block-Jagadhri, District- Yamuna Nagar, Haryana



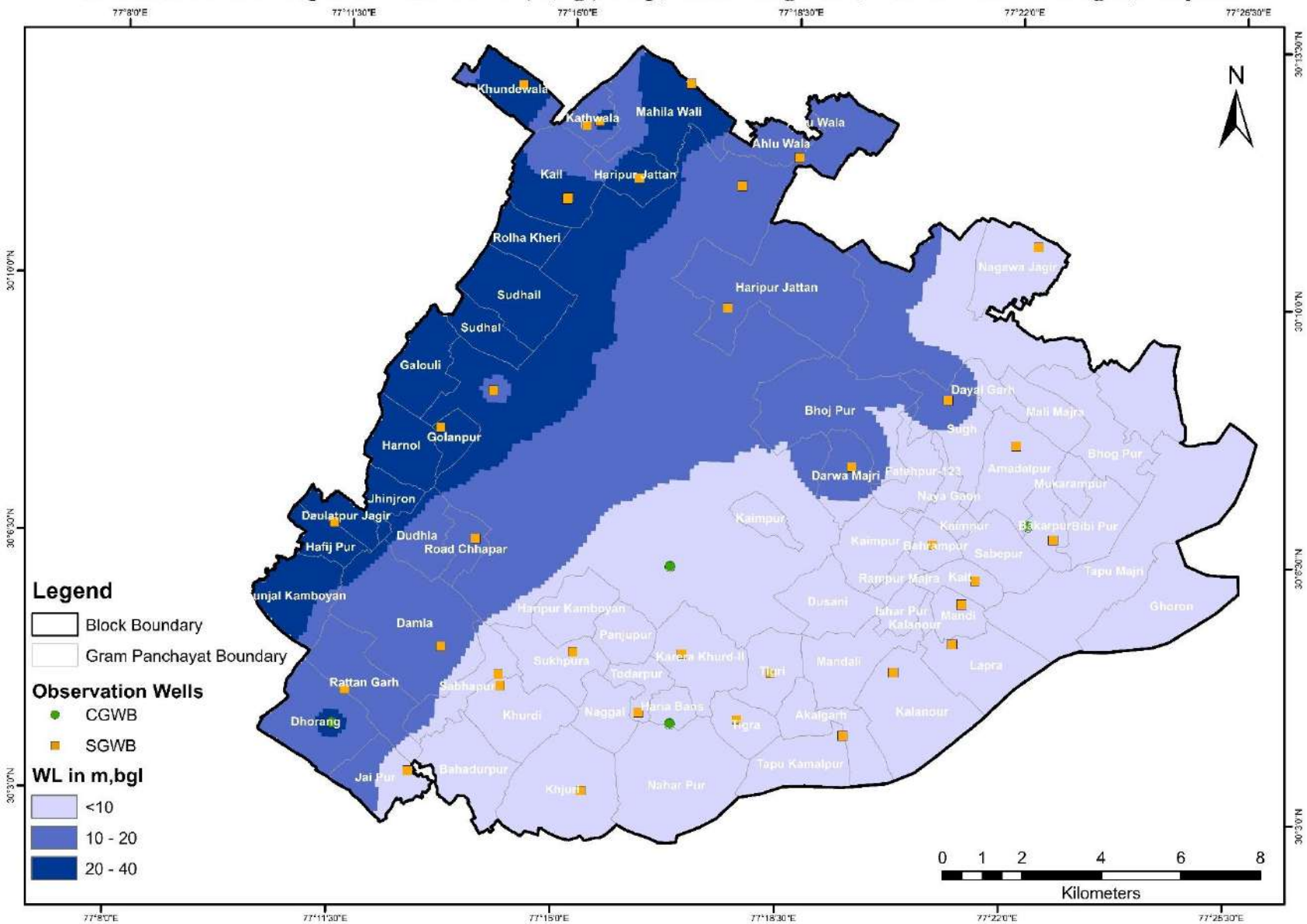
## Location of Observation Wells for Monitoring Water Levels and Water Quality, Block- Jagadhri, District- Yamunanagar, Haryana



# Hydrogeological Map, Block- Jagadhri, District- Yamunanagar, Haryana

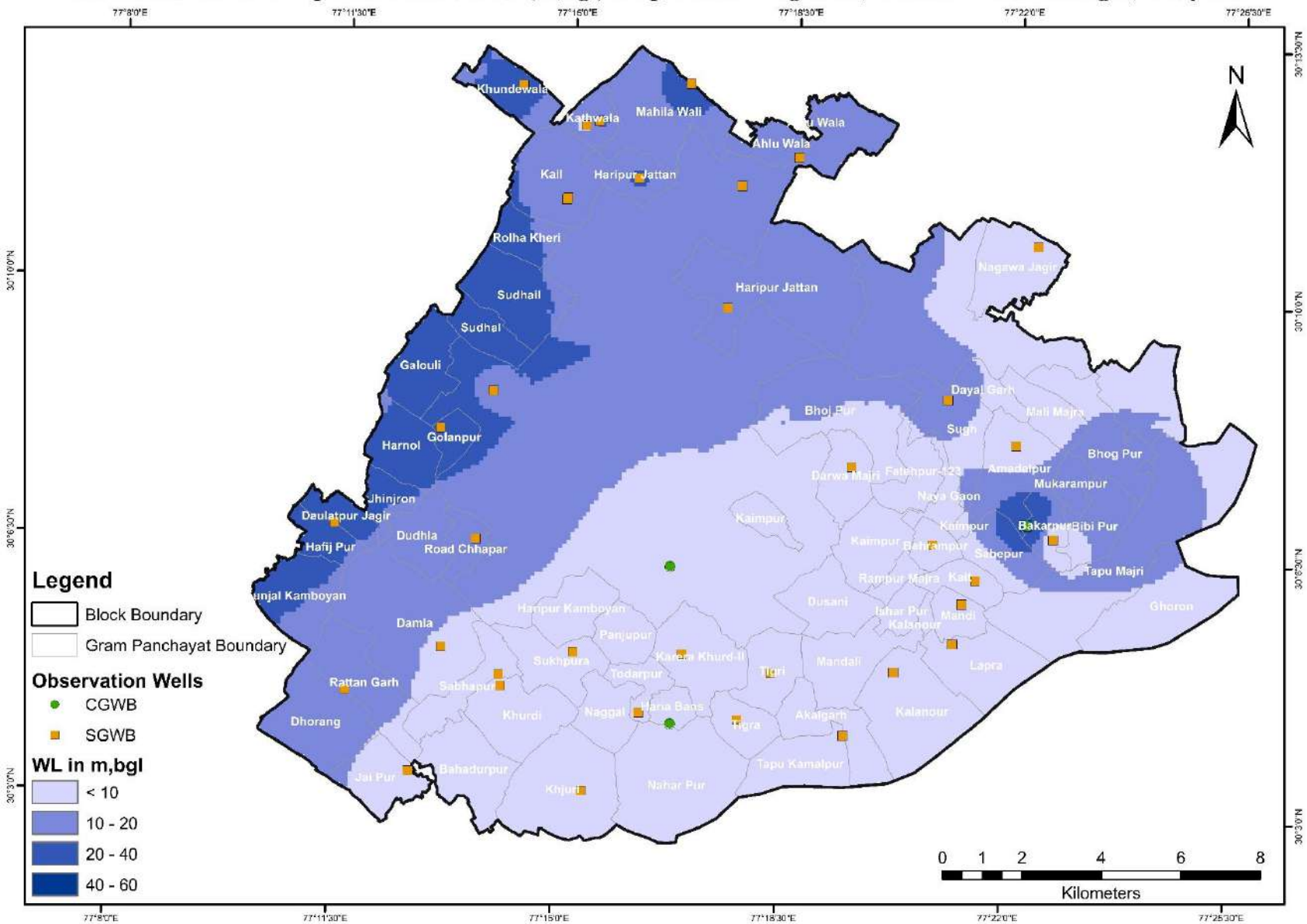


### Pre Monsoon 2023 Depth to Water Level (m,bgl) Map, Block - Jagadhri, District - Yamunanagar, Haryana

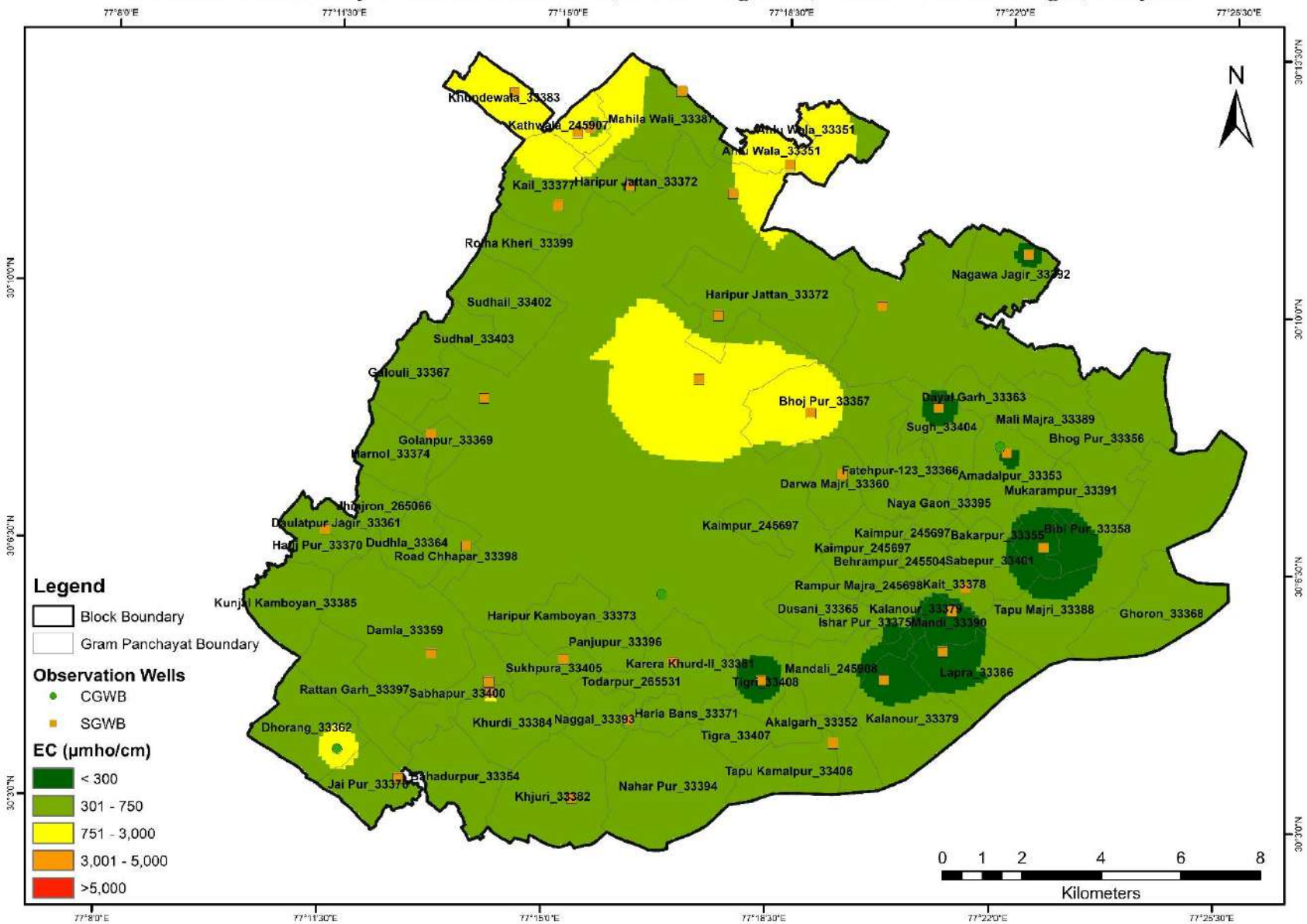




### Post Monsoon 2023 Depth to Water Level (m,bgl) Map, Block - Jagadhri, District - Yamunanagar, Haryana



### Electrical Conductivity of Groundwater-2023, Block - Jagadhri, District - Yamunanagar, Haryana



**ANNEXURE: I**  
**BASIC DATA OF MONITORING WELLS**

State	Haryana				District				Yamuna Nagar				Block		Jagadhri
S. No	Well ID	GP Name	Name of the village	Site Name	Latitude	Longitude	Type of Well (DW/PZ)	Reduced Level (m,asl)	Aquifer Type/Lithology	Height of Measuring (m,agl)	Depth (m,bgl)	Diameter (m)	Purpose of Monitoring (WL/WQ)	Monitoring Mechanism	Agency
1	Da_30.0848_77.2196	Damla_33359	Damla	KVK Complex	30.08476	77.21963	PZ	270	Unconfined to Semi Confined	0.65	30.48	0.1	Both	Manual	SGWB
2	Ja_30.1635_77.2915	Haripur Jattan_33372	Jagadhari	Near Niwarsi Dera	30.16354	77.29152	PZ	281	Unconfined to Semi Confined	0.65	24.85	0.1	Both	Manual	SGWB
3	Jh_30.1912_77.2943	Jharauda	Jharauda	South of Niwarsi Dera	30.19124	77.29431	PZ	280.2	Unconfined to Semi Confined	0.65	35	0.1	Both	Manual	SGWB
4	Ka_30.187_77.2488	Kail_33377	Kail	South of Niwarsi Dera	30.187	77.24879	TW	280.6	Unconfined to Semi Confined	0.7	24	0.254	Both	Manual	SGWB
5	Ka_30.1034_77.3583	Kait_33378	Kait	South of Niwarsi Dera	30.10343	77.35829	PZ	269.7	Unconfined to Semi Confined	0.65	70	0.1	Both	Manual	SGWB
6	Ka_30.2039_77.2532	Kathwala_245907	Kathwala	Near road and pond	30.20392	77.25324	Dug wells	281.6	Unconfined to Semi Confined	1.25	10.81	2	Both	Manual	SGWB
7	Kh_30.0763_77.2354	Khurdi_33384	Khurdi	Near Pond	30.07628	77.23542	PZ	267.3	Unconfined to Semi Confined	0.65	70	0.1	Both	Manual	SGWB
8	Ma_30.1431_77.2312	Mandebari	Mandebari	South of pond near road	30.14308	77.23123	TW	271.1	Unconfined to Semi Confined	0.7	28.5	0.254	Both	Manual	SGWB
9	W300400077113001	Dhorang_33362	Dhaurang M	Dhaurang M	30.0667	77.1917	PZ	274	Unconfined to Semi Confined	0.7	185	152mm	Both	Manual	CGWB
10	W300400077113002	Dhorang_33362	Dhaurang S	Dhaurang S	30.0667	77.1917	PZ	274	Unconfined to Semi Confined	0.7	55	152mm	Both	Manual	CGWB
11	W300410077165102	Naggal_33393	Naggal	Naggal-S	30.0707	77.2808	PZ	268	Unconfined to Semi Confined	0.6	70	152mm	WL	Manual	CGWB

Atal Bhujal Yojana - Block Hydrogeological Report

12	W300410077165101	Naggal_33393	Naggal M	Naggal M	30.0690	77.2798	PZ	268	Unconfined to Semi Confined	0.6	200	152mm	WL	Manual	CGWB
13	HR_GW_886	Ahlu Wala_33351	Ahluwala	Crematorium	30.1981	77.30898	PZ	282	Semi-Confined To Confined	0.5	62	0.102	Both	Telemetry	SGWB
14	HR_GW_904	Amadalpur_33353	Amadalpur	Verternity Hospital, Amadalpur	30.13426	77.36789	PZ	276	Semi-Confined To Confined	0.5	57	0.102	Both	Telemetry	SGWB
15	HR_GW_887	Bakarpur_33355	Bakarpur	Community Hall, Bakarpur	30.11321	77.37827	PZ	273	Semi-Confined To Confined	0.5	57	0.102	Both	Telemetry	SGWB
16	HR_GW_888	Behrampur_245504	Behrampur	Govt. Primary School	30.11125	77.34686	PZ	275	Semi-Confined To Confined	0.5	57	0.102	WL	Telemetry	SGWB
17	HR_GW_905	Darwa Majri_33360	Darwa Majri	Govt. SS School	30.12831	77.3252	PZ	275	Semi-Confined To Confined	0.5	60	0.102	Both	Telemetry	SGWB
18	HR_GW_907	Golanpur_33369	Golanpur	Govt. Primary School, Golanpur	30.13434	77.21775	PZ	279	Semi-Confined To Confined	0.5	73	0.102	Both	Telemetry	SGWB
19	HR_GW_890	Hafij Pur_33370	Hafijpur	Govt. Middle school	30.11217	77.19086	PZ	276	Semi-Confined To Confined	0.5	72	0.102	Both	Telemetry	SGWB
20	HR_GW_891	Haripur Jattan_33372	Haripur Jattan	Govt. Primary School	30.19225	77.26746	PZ	287	Semi-Confined To Confined	0.5	57	0.102	Both	Telemetry	SGWB
21	HR_GW_892	Jai Pur_33376	Jaipur	Govt. Middle school	30.0564	77.21203	PZ	267	Semi-Confined To Confined	0.5	62	0.102	Both	Telemetry	SGWB
22	HR_GW_893	Kail_33377	Kail	Govt. Middle school	30.18736	77.24902	PZ	282	Semi-Confined To Confined	0.5	69	0.102	Both	Telemetry	SGWB
23	HR_GW_908	Kalanour_33379	Kalanaour	Govt. Middle school	30.0821	77.33775	PZ	271	Semi-Confined To Confined	0.5	60	0.102	Both	Telemetry	SGWB
24	HR_GW_909	Karera Khurd-II_33381	Kareda Khurd	Govt. Middle School	30.08472	77.28249	PZ	267	Semi-Confined To Confined	0.5	60	0.102	Both	Telemetry	SGWB
25	HR_GW_910	Kathwala_245907	Kathwala	Govt. Middle school	30.20488	77.25661	PZ	286	Semi-Confined To Confined	0.5	64	0.102	Both	Telemetry	SGWB
26	HR_GW_894	Khjuri_33382	Khajuri	Govt. Middle school	30.05305	77.25728	PZ	268	Semi-Confined To Confined	0.5	63	0.102	Both	Telemetry	SGWB

Atal Bhujal Yojana - Block Hydrogeological Report

27	HR_GW_895	Khundewala_33383	Khundewala	Govt. Primary School	30.21256	77.23655	PZ	282	Semi-Confined To Confined	0.5	56	0.102	Both	Telemetry	SGWB
28	HR_GW_896	Lapra_33386	Lapra	Govt. Middle School	30.08893	77.35286	PZ	268	Semi-Confined To Confined	0.5	58	0.102	Both	Telemetry	SGWB
29	HR_GW_911	Mahila Wali_33387	Mahilawali	Govt. Sen. Sec. School	30.21402	77.28022	PZ	289	Semi-Confined To Confined	0.5	59	0.102	Both	Telemetry	SGWB
30	HR_GW_912	Mandi_33390	Mandi	Govt. Middle School	30.09801	77.35494	PZ	270	Semi-Confined To Confined	0.5	58	0.102	Both	Telemetry	SGWB
31	HR_GW_897	Nagawa Jagir_33392	Nagawa Jagir	Crematorium	30.17943	77.37204	PZ	274	Semi-Confined To Confined	0.5	57	0.102	Both	Telemetry	SGWB
32	HR_GW_913	Rattan Garh_33397	Rattangarh	Govt. Middle school	30.07437	77.19491	PZ	276	Semi-Confined To Confined	0.5	74	0.102	WL	Telemetry	SGWB
33	HR_GW_898	Road Chhappar_33398	Road Chapper	Amberdkar Bhawan, Road Chapper	30.10943	77.22778	PZ	277	Semi-Confined To Confined	0.5	75	0.102	Both	Telemetry	SGWB
34	HR_GW_899	Sabhapur_33400	Sabhapur	Dharmshala	30.07887	77.23481	PZ	266	Semi-Confined To Confined	0.5	63	0.102	Both	Telemetry	SGWB
35	HR_GW_901	Sugh_33404	Sugh	Govt. Primary School	30.14418	77.34978	PZ	284	Semi-Confined To Confined	0.5	56	0.102	Both	Telemetry	SGWB
36	HR_GW_914	Sukhpura_33405	Khandwa	Govt. Primary School	30.08447	77.25407	PZ	269	Semi-Confined To Confined	0.5	61	0.102	WL	Telemetry	SGWB
37	HR_GW_915	Tapu Kamalpur_33406	Tapu Kamalpur	Ambedkar Bhawan, Tapu Kamalpur	30.06739	77.32503	PZ	268	Semi-Confined To Confined	0.5	60	0.102	Both	Telemetry	SGWB
38	HR_GW_917	Tigra_33407	Tigra	Govt. Middle School	30.07026	77.29732	PZ	267	Semi-Confined To Confined	0.5	53	0.102	Both	Telemetry	SGWB
39	HR_GW_902	Tigri_33408	Tigri	Govt. Primary School	30.08108	77.30575	PZ	274	Semi-Confined To Confined	0.5	58	0.102	Both	Telemetry	SGWB
40	HR_GW_903	Todarpur_265531	Todarpur	Govt. Primary School, Todarpur	30.07121	77.27161	PZ	271	Semi-Confined To Confined	0.5	55	0.102	Both	Telemetry	SGWB
41	W300637077214502	Sabapur_33401	SABAPUR-M	SABAPUR-M-Pz	30.1162	77.3715	PZ	276	Unconfined to Semi Confined	0.5	186	0.102	WL	Manual	CGWB

Atal Bhujal Yojana - Block Hydrogeological Report

42	W300815077220001	Amadalpur_33353	Amadalpur	Amadalpur	30.13583	77.36611	HP	280	Alluvium	2.62	NA	NA	WQ	Manual	CGWB
43	Bam_30.286_77.219	Bamboli	Bamboli	Bamboli	30.28611	77.21944	TW	NA	Alluvium	0.81	NA	0.102	WQ	Manual	CGWB
44	W282210076514501	Bilaspur	Bilaspur	Bilaspur	30.3	77.3	HP	NA	Alluvium	NA	NA	NA	WQ	Manual	CGWB
45	W281024076092301	Dhorang_33362	Dhaurang	Dhaurang	30.0625	77.19583	HP	274	Alluvium	0.7	NA	0.152	WQ	Manual	CGWB
46	W301215077090002	SaraswatiNagar_33460	Mustafabad	Mustafabad	30.19583	77.14583	HP	NA	Alluvium	NA	NA	NA	WQ	Manual	CGWB
47	W300600077164501	Shadipur	Shadipur	Shadipur	30.1046	77.2786	HP	NA	Alluvium	NA	7.9	NA	Both	Manual	CGWB

**ANNEXURE: 2**  
**WATER LEVEL (WL) DATA OF MONITORING WELLS**

State	Haryana	District	Yamuna Nagar	Block	Jagadhri
Month of Pre-monsoon Water Level Measurement					June
Month of Post-monsoon water Level measurement					October

S. No.	Observation Point	Source	Well Type	Co-ordinate		Water Level (m)																	
				Latitude	Longitude	2015		2016		2017		2018		2019		2020		2021		2022		2023	
						Pre	Post	Pre	Post	Pre	Post	Pre	Post	Pre	Post	Pre	Post	Pre	Post	Pre	Post	Pre	Post
1	Damla_33359	SGWB	Piezometer	30.08476	77.21963	13.3	12	14	NA	13.7	12.2	12	11.4	12.4	9.65	12.6	10.4	11	11	13	14	11.8	9.9
2	Haripur Jattan_33372	SGWB	Piezometer	30.16354	77.29152	17.6	17	18	NA	18.6	19.1	18	17.5	19	16.8	17	16.8	17	17	18	18.6	17.4	15
3	Jharauda	SGWB	Piezometer	30.19124	77.29431	18.6	18	19	NA	18.8	17.6	18	16.3	17.8	15.8	16.8	15.6	16	15.6	17.2	17.4	17.1	15.4
4	Kail_33377	SGWB	Tube Well	30.187	77.24879	20.9	20	21	NA	21.2	20.8	21	20.2	21.4	20.9	22.5	20.3	20	18	20	19.9	19.7	18
5	Kait_33378	SGWB	Piezometer	30.10343	77.35829	6.64	6.1	7.6	NA	8.14	7.64	5.2	3.68	5.33	3.43	3.34	2.76	3.5	2.5	3.6	3.63	3.58	1.7
6	Kathwala_245907	SGWB	Dug Well	30.20392	77.25324	10.6	9.5	11	NA	11	10.6	11	9.57	11.3	11.2	11.7	10.7	9.8	7.8	9.4	8.3	8.7	7.3
7	Khurdi_33384	SGWB	Piezometer	30.07628	77.23542	13.4	13	14	NA	14.4	13.4	14	12.2	13.8	11.8	11.8	9.65	9.1	6.6	7	7.1	5.24	2.8
8	Mandebari	SGWB	Tube Well	30.14308	77.23123	20.3	20	21	NA	21.3	20.3	21.8	20.0	22.0	21.6	21.8	20.2	19.5	17.8	19.8	20	19.6	19
9	Dhorang_33362	CGWB	Piezometer	30.06778	77.19167	NA	18	19	19	19.5	19.2	20	14.9	16.2	NA	17.5	18.2	19	19	20	19.2	21.5	NA
10	Dhorang_33362	CGWB	Piezometer	30.06778	77.19167	15.5	15	16	15	16.2	15.4	17	18.4	18.8	NA	16.5	15.6	16	16	16	15	21.5	NA
11	Naggal_33393	CGWB	Piezometer	30.06894	77.27126	5.38	5.1	5.7	NA	5.9	5.5	6.1	5	4.74	3.04	2.87	3.08	4.6	4.4	5.2	4.7	NA	NA
12	Naggal_33393	CGWB	Piezometer	30.06894	77.27126	6.24	6	6.7	5.5	6.93	6.4	7.3	5.74	6.8	5.1	5.7	5.2	6.6	6.1	7	6.25	7.8	3.6
13	Shadipur	CGWB	Dug Well	30.10167	77.27917	5.4	5.6	6.2	5.7	5.78	5.36	6.5	3.34	5.45	6.4	3.92	3.5	5.4	4.8	4.8	4.64	6.26	4.1
14	Sabapur_33401	CGWB	Piezometer	30.1162	77.3715	NA	NA	NA	NA	NA	NA	2.45	1.62	4	3.71	3.9	3.02	4.25	3.14	4.54	2.14	4.15	2.07
15	Ahlu Wala_33351	SGWB	Piezometer	30.1981	77.30898	NA	NA	NA	NA	NA	NA	NA	NA	NA	NA	NA	NA	NA	NA	NA	NA	18.1	16
16	Amadalpur_33353	SGWB	Piezometer	30.13426	77.36789	NA	NA	NA	NA	NA	NA	NA	NA	NA	NA	NA	NA	NA	NA	NA	NA	6.15	4.9
17	Bakarpur_33355	SGWB	Piezometer	30.11321	77.37827	NA	NA	NA	NA	NA	NA	NA	NA	NA	NA	NA	NA	NA	NA	NA	NA	3.02	2.1
18	Behrampur_245504	SGWB	Piezometer	30.11125	77.34686	NA	NA	NA	NA	NA	NA	NA	NA	NA	NA	NA	NA	NA	NA	NA	NA	3.46	2.9
19	Darwa Majri_33360	SGWB	Piezometer	30.12831	77.3252	NA	NA	NA	NA	NA	NA	NA	NA	NA	NA	NA	NA	NA	NA	NA	NA	12.7	9.6







Atal Bhujal Yojana - Block Hydrogeological Report

Bilaspur	CGWB	Hp	30.3	77.3	2021	8.81	360	ND	170.1	12.0	34.0	32.0	1.3	46.8	174.5	0.0	14.2	0.76	0.40	
Bilaspur	CGWB	Hp	30.3	77.3	2022	8.14	856	ND	384.0	24.0	78.8	24.0	3.4	0.0	334.0	54.0	71.0	0.62	0.80	
Bilaspur	CGWB	Hp	30.3	77.3	2023	8.12	800	ND	350.0	84.0	34.0	45.9	2.5	0.0	396.5	0.0	92.3	0.70	5.34	
Dhaurang	CGWB	Hp	30.0625	77.19583333	2015	8.57	321	ND	122.5	28.6	12.4	28.0	4.5	41.0	101.1	BDL	24.3	0.36	BDL	
Dhaurang	CGWB	Hp	30.0625	77.19583333	2016	8.2	295	ND	147.0	40.0	21.0	21.0	5.2	0.0	191.0	30.0	7.1	0.54	BDL	
Dhaurang	CGWB	Hp	30.0625	77.19583333	2017	8.43	452	ND	214.0	57.0	17.0	20.0	4.7	44.0	182.0	BDL	24.0	0.68	BDL	
Dhaurang	CGWB	Hp	30.0625	77.19583333	2018	8.1	427	ND	170.0	40.0	17.0	22.0	1.7	0.0	180.0	13.0	35.0	0.37	0.20	
Dhaurang	CGWB	Hp	30.0625	77.19583333	2019	8.1	392	ND	140.0	28.0	17.0	12.9	1.0	0.0	134.0	BDL	37.0	0.59	2.84	
Dhaurang	CGWB	Hp	30.0625	77.19583333	2020	8.42	307	ND	110.1	20.0	14.6	28.0	4.9	24.0	109.8	0.0	35.5	1.10	0.55	
Dhaurang	CGWB	Hp	30.0625	77.19583333	2021	8.59	307	ND	120.1	20.0	17.0	32.0	4.7	31.2	126.9	0.0	28.4	0.55	0.00	
Dhaurang	CGWB	Hp	30.0625	77.19583333	2022	7.94	648	ND	150.0	22.0	23.1	82.0	2.4	0.0	224.0	73.0	42.0	0.61	0.10	
Dhaurang	CGWB	Hp	30.0625	77.19583333	2023	8.16	810	ND	310.0	56.0	41.3	59.2	5.8	0.0	402.6	0.0	78.1	0.93	0.13	
Mustafabad	CGWB	Hp	30.19583333	77.14583333	2015	8.4	1177	ND	153.1	18.4	26.0	205.0	10.0	35.1	285.6	120.0	132.0	0.53	2.09	
Mustafabad	CGWB	Hp	30.19583333	77.14583333	2016	8.25	2200	ND	314.0	27.0	60.0	265.0	221.0	0.0	359.0	272.0	285.0	0.36	229.00	
Mustafabad	CGWB	Hp	30.19583333	77.14583333	2017	8.36	1110	ND	184.0	37.0	22.0	180.0	9.4	56.0	271.0	225.0	21.0	0.48	BDL	
Mustafabad	CGWB	Hp	30.19583333	77.14583333	2018	8.56	762	ND	170.0	16.0	32.0	125.0	7.0	48.0	232.0	64.0	78.0	0.99	0.20	
Mustafabad	CGWB	Hp	30.19583333	77.14583333	2019	8.66	382	ND	100.0	12.0	17.0	69.7	3.7	36.0	183.0	14.0	21.0	0.37	0.20	
Mustafabad	CGWB	Hp	30.19583333	77.14583333	2020	8.58	458	ND	80.1	16.0	9.7	82.0	3.8	36.0	219.7	0.0	14.2	0.05	0.44	
Mustafabad	CGWB	Hp	30.19583333	77.14583333	2021	8.74	1010	ND	220.2	24.0	38.9	121.0	5.1	46.8	190.4	12.0	177.3	0.33	0.27	
Mustafabad	CGWB	Hp	30.19583333	77.14583333	2022	8.09	1085	ND	248.0	26.0	44.5	129.0	4.2	0.0	320.0	16.0	188.0	0.41	0.50	
Mustafabad	CGWB	Hp	30.19583333	77.14583333	2023	8.24	670	ND	250.0	44.0	34.0	58.9	4.8	0.0	366.0	19.2	42.6	0.68	0.05	
Shadipur	CGWB	Hp	30.1	77.27916667	2015	8.48	325	ND	117.4	24.5	13.6	25.0	5.6	81.9	11.9	20.0	6.9	0.14	BDL	
Shadipur	CGWB	Hp	30.1	77.27916667	2016	8.24	373	ND	186.0	39.0	21.0	12.0	7.8	0.0	156.0	72.0	7.1	0.44	0.98	
Shadipur	CGWB	Hp	30.1	77.27916667	2017	8.28	450	ND	194.0	49.0	17.0	26.0	6.6	0.0	179.0	82.0	15.0	0.31	BDL	
Shadipur	CGWB	Hp	30.1	77.27916667	2018	8.5	370	ND	130.0	16.0	22.0	36.0	4.2	72.0	61.0	ND	28.0	0.33	0.20	
Shadipur	CGWB	Hp	30.1	77.27916667	2019	8.51	339	ND	140.0	28.0	17.0	27.3	4.5	24.0	159.0	13.0	14.0	0.24	0.20	
Shadipur	CGWB	Hp	30.1	77.27916667	2020	8.51	325	ND	130.1	20.0	19.5	27.0	6.8	36.0	134.2	0.0	14.2	0.05	0.20	
Shadipur	CGWB	Hp	30.1	77.27916667	2021	8.66	790	ND	230.2	24.0	41.3	77.0	21.0	46.8	174.5	79.0	78.0	0.23	2.00	
Shadipur	CGWB	Hp	30.1	77.27916667	2022	8.46	346	ND	98.0	9.0	18.4	34.0	6.0	36.0	112.0	0.0	21.0	0.27	1.80	
Shadipur	CGWB	Hp	30.1	77.27916667	2023	Sample not collected from this location														
Ahlu Wala_33351	SGWB	Pz	30.1981	77.308978	2023	7.47	842	538.8	276.3	63.1	28.8	54.4	17.2	0	243.9	44.1	149.6	0.34	38.7	
Amadalpur_33353	SGWB	Pz	30.134262	77.367894	2023	7.8	251	146	80	20	5.49	25	10	0	70	8	40	0.65	0	

Atal Bhujal Yojana - Block Hydrogeological Report

Bakarpur_33355	SGWB	Pz	30.113211	77.378269	2023	7.75	261	154	80	20	6.86	25	15	0	70	8	40	0.32	5
Darwa Majri_33360	SGWB	Pz	30.128305	77.325197	2023	7.91	353	240	123.3	27.6	13.2	24.2	7.6	0	107.1	19.6	66.5	0.23	17.2
Golanpur_33369	SGWB	Pz	30.134337	77.217753	2023	7.59	488	283	150	40	12.34	45	25	0	130	12	70	0.54	5
Haripur Jattan_33372	SGWB	Pz	30.192251	77.267457	2023	8.09	281	179.8	88.8	19.7	9.6	18.1	5.7	0	77.3	14.7	49.8	0.65	12.9
Hafij Pur_33370	SGWB	Pz	30.112172	77.190858	2023	7.81	417	266.8	138.1	31.5	14.4	26.9	8.54	0	119	21.8	73.6	0.23	19.2
Kail_33377	SGWB	Pz	30.187357	77.249023	2023	7.79	529	322.6	167.7	37.4	18.1	32.5	10.3	0	142.8	26.3	90.2	0.54	23.2
Jai Pur_33376	SGWB	Pz	30.056397	77.212033	2023	8.03	746	432.6	222	51.2	22.8	43.7	13.8	0	196.3	35.4	121.1	0.65	31.1
Kathwala_245907	SGWB	Pz	30.204878	77.256607	2023	7.78	521	323	167.7	37.4	18.1	32.6	10.3	0	142.8	26.4	90.2	0.23	23.2
Kalanour_33379	SGWB	Pz	30.082103	77.33775	2023	7.8	248	149.45	74.009	23.66	3.62	16.8	5.38	0	65.4	12.3	40.3	0.54	10.8
Karera Khurd-II_33381	SGWB	Pz	30.084722	77.282485	2023	8.28	325	188.5	93.7	21.6	9.6	19.1	6.1	0	83.3	15.4	52.2	0.43	13.5
Khundewala_33383	SGWB	Pz	30.212561	77.236553	2023	7.58	892	579.8	300.9	69.02	31.2	58.5	18.5	0	261.8	47.5	161.5	0.65	41.7
Khjuri_33382	SGWB	Pz	30.053054	77.257278	2023	8.32	346	224.9	113.4	25.6	12	22.7	7.1	0	101.1	18.4	61.7	0.34	16.1
Lapra_33386	SGWB	Pz	30.088931	77.352863	2023	7.65	282	174.8	88.8	19.7	9.6	17.6	5.59	0	77.3	14.2	47.5	0.34	12.5
Mandi_33390	SGWB	Pz	30.098005	77.354941	2023	7.75	271	165.3	83.8	19.7	8.4	16.6	5.2	0	71.4	13.4	45.1	0.23	11.8
Mahila Wali_33387	SGWB	Pz	30.214023	77.280221	2023	7.62	654	385.8	197.3	45.3	20.4	38.9	12.3	0	172.5	31.6	106.8	0.34	27.7
Nagawa Jagir_33392	SGWB	Pz	30.179432	77.372044	2023	8.13	292	183.9	93.7	21.6	9.6	18.5	5.8	0	83.3	15.1	49.8	0.23	13.2
Road Chhapar_33398	SGWB	Pz	30.109428	77.227776	2023	7.78	383	245	130	30	9.6	40	20	0	120	12	60	0.43	5
Sabhapur_33400	SGWB	Pz	30.078872	77.23481	2023	8.07	461	262.7	133.2	29.5	14.4	26.5	8.4	0	119	21.5	71.2	0.23	18.9
Sugh_33404	SGWB	Pz	30.144178	77.349777	2023	7.99	267	170.8	88.8	19.7	9.6	17.2	5.4	0	77.3	14	47.5	0.23	12.2
Tigra_33407	SGWB	Pz	30.070258	77.297319	2023	8.22	257	169.6	83.8	19.7	8.4	17.1	5.4	0	77.3	13.8	45.1	0.23	12.1
Tigri_33408	SGWB	Pz	30.081078	77.305746	2023	8.06	268	158.1	78.9	17.7	8.4	15.9	5.1	0	71.4	12.9	42.7	0.34	11.3
Todarpur_265531	SGWB	Pz	30.071207	77.271614	2023	7.77	326	222	128.85	39.14	7.56	22.39	4.88	0	100.7	18.16	68.21	0.23	15.93
Behrampur_245504	SGWB	Pz	30.111247	77.346857	2023	7.93	248	158.72	78.943	23.66	4.82	17.9	5.71	0	71.4	12.9	42.7	0.43	11.4
Tapu Kamalpur_33406	SGWB	Pz	30.067388	77.325033	2023	7.97	693	482.48	290.31	89.71	16.5	60	15	0	259.7	32.24	89.19	0.89	11.08

Name of District	Name of Block	Source	Name of village/ OW data	Latitude	Longitude	Value of EC June 2020	Value of EC June-2021	Value of EC June-2022	Value of EC June-2023
------------------	---------------	--------	--------------------------	----------	-----------	-----------------------	-----------------------	-----------------------	-----------------------

Atal Bhujal Yojana - Block Hydrogeological Report

Yamunanagar_76	Jagadhri_562	SGWB	Jagadhari	30.16354	77.29152	550	500	950	600
Yamunanagar_76	Jagadhri_562	SGWB	Chaneti	30.16678	77.33422	800	1000	500	650
Yamunanagar_76	Jagadhri_562	SGWB	Kait	30.10343	77.35829	950	700	1300	330
Yamunanagar_76	Jagadhri_562	SGWB	Bhojpur	30.14208	77.31652	500	550	650	980
Yamunanagar_76	Jagadhri_562	SGWB	Khurdi	30.07628	77.23542	750	850	350	830
Yamunanagar_76	Jagadhri_562	SGWB	Kathwala	30.20392	77.25324	750	1050	950	1700
Yamunanagar_76	Jagadhri_562	SGWB	Kail	30.187	77.24879	800	750	300	850
Yamunanagar_76	Jagadhri_562	SGWB	Jharauda	30.19124	77.29431	850	850	400	750
Yamunanagar_76	Jagadhri_562	SGWB	Mandebari	30.14308	77.23123	850	800	1100	700
Yamunanagar_76	Jagadhri_562	SGWB	Damla	30.08476	77.21963	550	550	1250	600
Yamunanagar_76	Jagadhri_562	SGWB	TehiPanchtirthi	30.28	77.28	850	1000	800	440
Yamunanagar_76	Jagadhri_562	SGWB	Gobindpura	30.149	77.287	900	650	250	1150
Yamunanagar_76	Jagadhri_562	SGWB	Ahlu Wala_33351	30.1981	77.30898	NA	NA	NA	842
Yamunanagar_76	Jagadhri_562	SGWB	Amadalpur_33353	30.13426	77.36789	NA	NA	NA	251
Yamunanagar_76	Jagadhri_562	SGWB	Bakarpur_33355	30.11321	77.37827	NA	NA	NA	261
Yamunanagar_76	Jagadhri_562	SGWB	Darwa Majri_33360	30.12831	77.3252	NA	NA	NA	353
Yamunanagar_76	Jagadhri_562	SGWB	Golanpur_33369	30.13434	77.21775	NA	NA	NA	488
Yamunanagar_76	Jagadhri_562	SGWB	Haripur Jattan_33372	30.19225	77.26746	NA	NA	NA	281
Yamunanagar_76	Jagadhri_562	SGWB	Hafij Pur_33370	30.11217	77.19086	NA	NA	NA	417
Yamunanagar_76	Jagadhri_562	SGWB	Kail_33377	30.18736	77.24902	NA	NA	NA	529
Yamunanagar_76	Jagadhri_562	SGWB	Jai Pur_33376	30.0564	77.21203	NA	NA	NA	746
Yamunanagar_76	Jagadhri_562	SGWB	Kathwala_245907	30.20488	77.25661	NA	NA	NA	521
Yamunanagar_76	Jagadhri_562	SGWB	Kalanour_33379	30.0821	77.33775	NA	NA	NA	248
Yamunanagar_76	Jagadhri_562	SGWB	Karera Khurd-II_33381	30.08472	77.28249	NA	NA	NA	325

*Atal Bhujal Yojana - Block Hydrogeological Report*

Yamunanagar_76	Jagadhri_562	SGWB	Khundewala_33383	30.21256	77.23655	NA	NA	NA	892
Yamunanagar_76	Jagadhri_562	SGWB	Khjuri_33382	30.05305	77.25728	NA	NA	NA	346
Yamunanagar_76	Jagadhri_562	SGWB	Lapra_33386	30.08893	77.35286	NA	NA	NA	282
Yamunanagar_76	Jagadhri_562	SGWB	Mandi_33390	30.09801	77.35494	NA	NA	NA	271
Yamunanagar_76	Jagadhri_562	SGWB	Mahila Wali_33387	30.21402	77.28022	NA	NA	NA	654
Yamunanagar_76	Jagadhri_562	SGWB	Nagawa Jagir_33392	30.17943	77.37204	NA	NA	NA	292
Yamunanagar_76	Jagadhri_562	SGWB	Road Chhapar_33398	30.10943	77.22778	NA	NA	NA	383
Yamunanagar_76	Jagadhri_562	SGWB	Sabhapur_33400	30.07887	77.23481	NA	NA	NA	461
Yamunanagar_76	Jagadhri_562	SGWB	Sugh_33404	30.14418	77.34978	NA	NA	NA	267
Yamunanagar_76	Jagadhri_562	SGWB	Tigra_33407	28.11705	76.21373	NA	NA	NA	257
Yamunanagar_76	Jagadhri_562	SGWB	Tigri_33408	30.08108	77.30575	NA	NA	NA	268
Yamunanagar_76	Jagadhri_562	SGWB	Todarpur_265531	30.07121	77.27161	NA	NA	NA	326
Yamunanagar_76	Jagadhri_562	SGWB	Behrampur_245504	29.35569	77.08033	NA	NA	NA	248
Yamunanagar_77	Jagadhri_562	SGWB	Tapu Kamalpur_33406	30.06739	77.32503	NA	NA	NA	693