

ATAL BHUJAL YOJANA (AtalJal)

State : HARYANA

**Department : IRRIGATION & WATER
RESOURCE DEPARTMENT**

BLOCK : SADHAURA

DISTRICT : YAMUNA NAGAR

YEAR : 2023-2024

*Towards partial fulfilment of requirements for Disbursement of
Incentive under DLI -1*

HYDROGEOLOGICAL REPORT

(YEAR: 2023-24)

STATE	:	HARYANA
DISTRICT	:	YAMUNA NAGAR
BLOCK/TALUK	:	SADHAURA
BLOCK/TALUK HQs	:	SADHAURA

A GENERAL INFORMATION					
1.	Geographical area (Ha)	:	15376.94		
2.	No. of Gram Panchayats	:	43		
3.	No. of towns	:	1		
4.	No. of villages	:	62		
5.	Population (2011)	:	Male	Female	Total
			31560	29684	61244
6.	Rainfall (mm)(2021)	:	Monsoon	Non-monsoon	Annual
			932.03	394.01	1326.04
7.	River basin	:	Ghaggar river basin		
8.	Major soil types	:	Loamy Sand		

B LAND USE			
1.	Forest area (Ha)	:	250
2.	Cultivable area (Ha)	:	10409.04
3.	Net sown area (Ha)	:	9601.82
4.	Gross cropped area (Ha)	:	18549.90

C CROPPING PATTERN (As in 2022-23)						
1.	Major crops grown	:	Kharif	Rabi	Summer	Perennial
			Paddy	Wheat	Pulses	Polar
			Maize	Mustard	Tomato	
			Sugarcane	Sugarcane	Vegetable	
			Vegetable	Oilseeds		

D IRRIGATION FACILITIES (As in 2022-23)							
1.	Net irrigated area (Ha)	:	8789.94				
2.	Gross irrigated area (Ha)	:	10802				
3.	Area under irrigation (Ha) (Source-wise)	:	DW	BW/TW	Tanks/Ponds	Canals	Others
			-	10802	-	-	-

E GEOLOGY & HYDROGEOLOGY			
1.	Predominant rocktype	:	Sandstone, Shale, Sand, Silt, Clay and Kankar
2.	Major geological formations	:	Shivalik formation, Older and Newer Alluvium
3.	Important water-bearing formations	:	Coarse grain sand
4.	Status of coverage under NAQUIM	:	Covered

F GROUND WATER CONDITIONS								
1.	No. of wells used for WaterLevel (WL) monitoring.	:	Open wells			BW/TW/ PZ		
			CGWB	SGWB	Total	CGWB	SGWB	Total
			1	2	3	0	24	24
2.	Monitoring mechanism (Nos.)	:	Manual		DWLR		Telemetry	
			CGWB	SGWB	CGWB	SGWB	CGWB	SGWB
			1	8	0	18	0	18
3.	Monitoring frequency	:	Agency	No. of times monitored/year				
			CGWB	2 times/year Pre and Post Monsoon				
			SGWB	2 times/year Pre and Post Monsoon				
4.	Period of water level data availability.	:	Agency	Period of WL data availability (From - To)				
				From (year)		To (year)		
			CGWB	2015		2023		
			SGWB	2015		2023		
5.	Water level range (m.bgl)	:	Minimum/Village			Maximum/Village		
	Pre-monsoon (2023)		3.30/Sadhoura			47.0/Naya Gaon		
	Post-monsoon (2023)		1.85/Sadhoura			46.0/Naya Gaon		
6.	Seasonal WL fluctuation range (m)	:	Minimum/ Village			Maximum/ Village		
			-5.32/Rasoolpur			2.80/Rampur Ranyan		

G GROUND WATER QUALITY								
1.	No. of wells used for Water Quality (WQ) monitoring.		Open Wells			BW/TW/ PZ		
			CGWB	SGWB	Total	CGWB	SGWB	Total
			1	2	3	2	21	23
2.	Monitoring frequency		Agency	No. of times monitored/year				
			CGWB	1 times/year				
			SGWB	1 times/year				
3.	Period of water quality data availability		Agency	Period of WQ data availability (Years)				
			CGWB	2015 to 2023				
			SGWB	2020 to 2023				
4.	Parameters analysed		Agency	Parameters Analysed				
			CGWB	pH,EC,TH,Ca,Mg,Na,K,CO ₃ ,HCO ₃ , SO ₄ ,Cl,F,NO ₃				
			SGWB	EC				
			SGWB New	pH,EC,TDS,TH,Ca,Mg,Na,K,CO ₃ ,HCO ₃ , SO ₄ ,Cl,F,NO ₃				
5.	Known ground water quality issues, if any		No Such Issue					

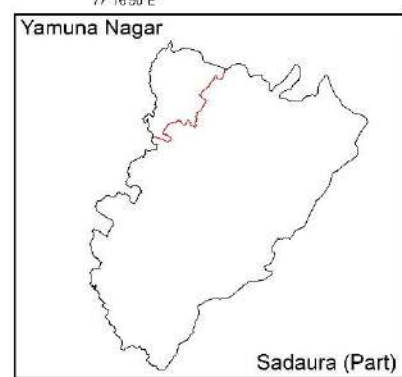
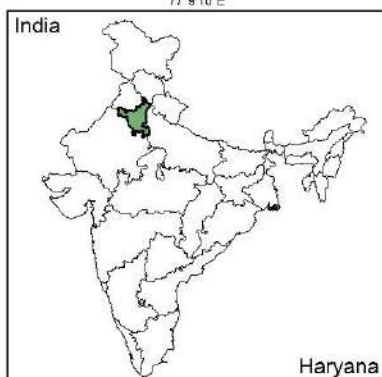
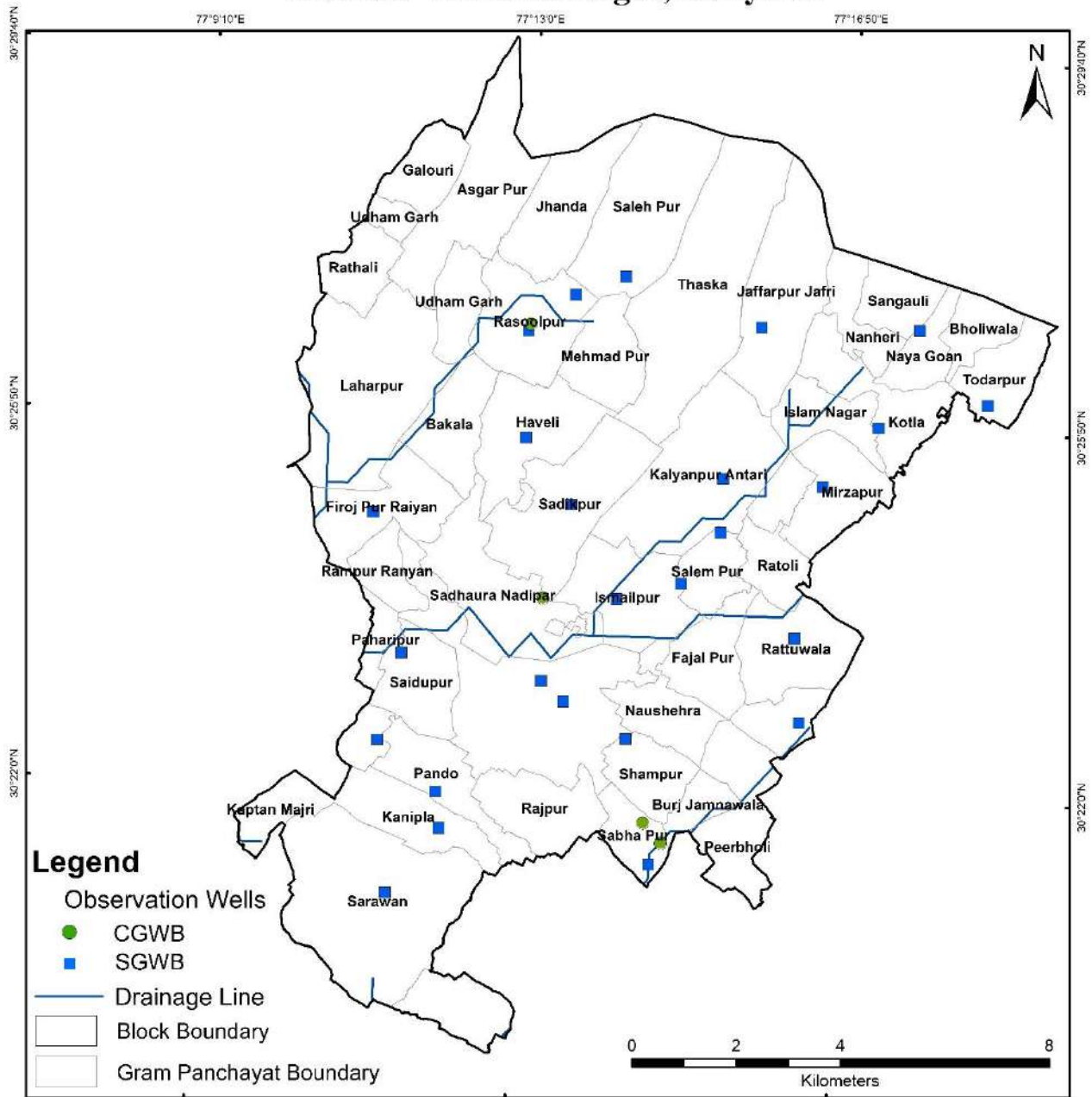
H. GROUND WATER RESOURCES							
1.	Latest assessment year	2022					
2.	Assessment Unit	Block					
3.	Annual extractable GW resource (ha.m)	3629.5					
4.	Current annual GW extraction (ha.m)	5263.24					
5.	Net GW availability for future use (ha.m)	0					
6.	Stage of GW extraction (%)	145.0%					
7.	Category of block/taluk/ (2022)	Over Exploited					
8.	Category of block/taluk/ in previous assessments	2020	2017	2013	2011	2009	2004
		Critical	Semi-Critical	Over Exploited	Over Exploited	Over Exploited	Over Exploited

I WATER-RELATED SCHEMES			
I.	Schemes with a bearing on ground water, being implemented in the block / taluk.		
	Centrally Sponsored /Central Sector Schemes	i)	PMKSY
		ii)	MGNREGA
		iii)	JJM
		iv)	RKVY
	State Schemes	i)	State Plan Scheme for providing assistance on adopting water saving technologies (2402)
		ii)	MPMV
		iii)	
		iv)	

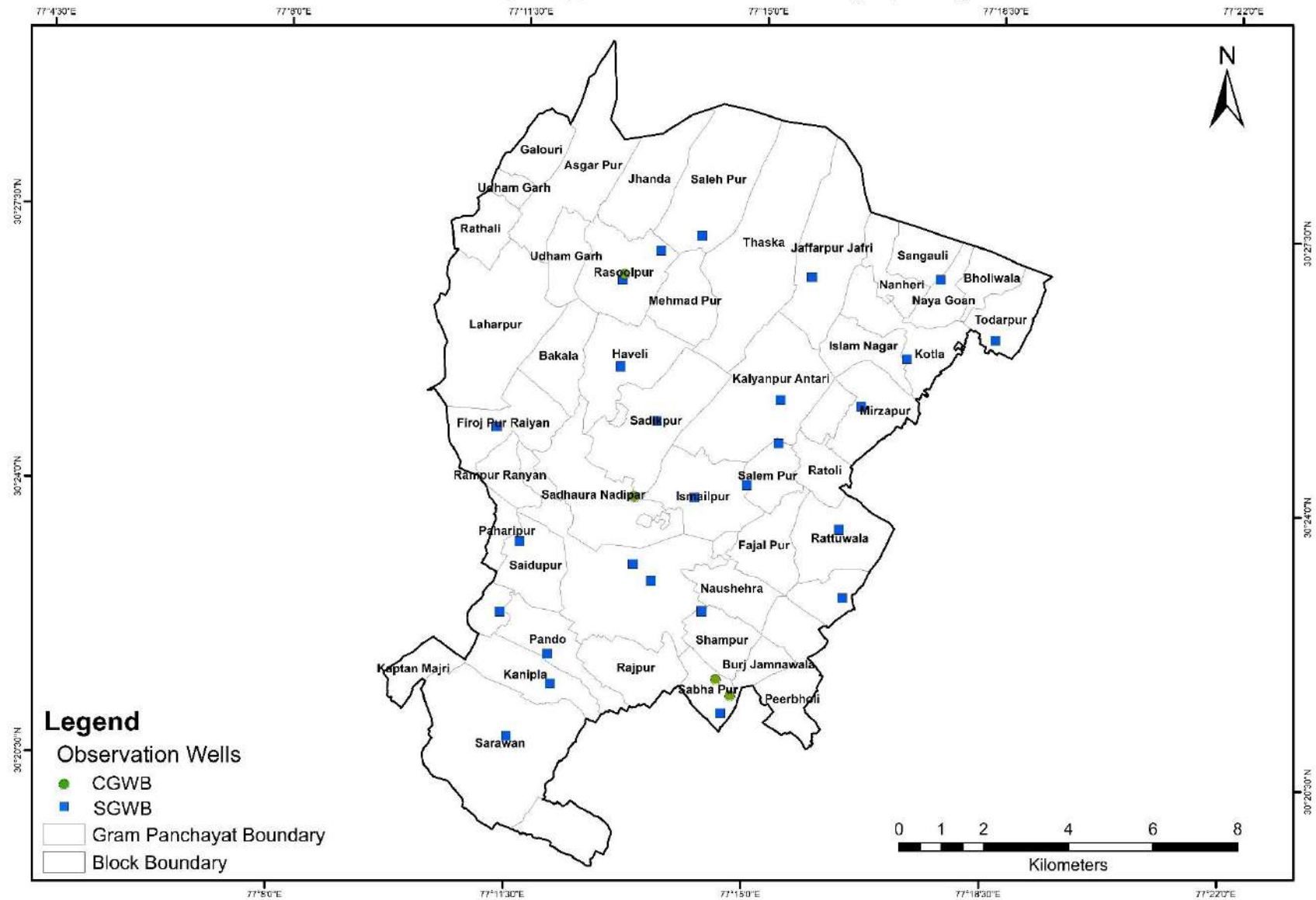
J GROUND WATER RELATED ISSUES			
I.	Ground water related issues of the block		
	i) Issues related to GW availability	:	No such issue
	ii) Issues related to GW quality	:	The ground water is alkaline in nature and is of low to medium salinity.
	iii) Other issues if any.	:	No

K ANNEXURES	
I.	Basic data of observation wells – Attached
II.	Historical water level data – Attached
III.	Historical water quality data – Attached

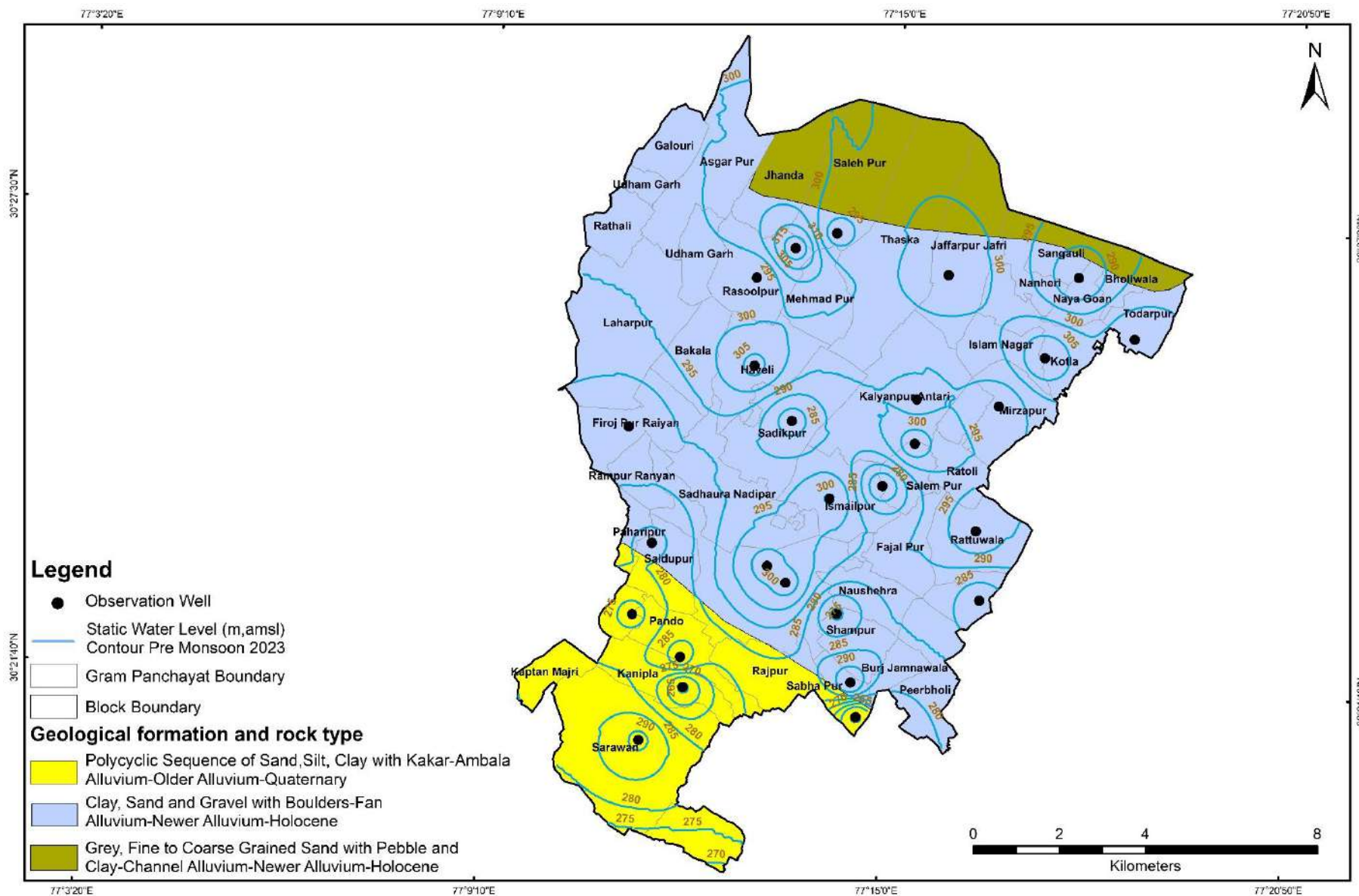
Location Map of Block- Sadaura (Part), District- Yamuna Nagar, Haryana



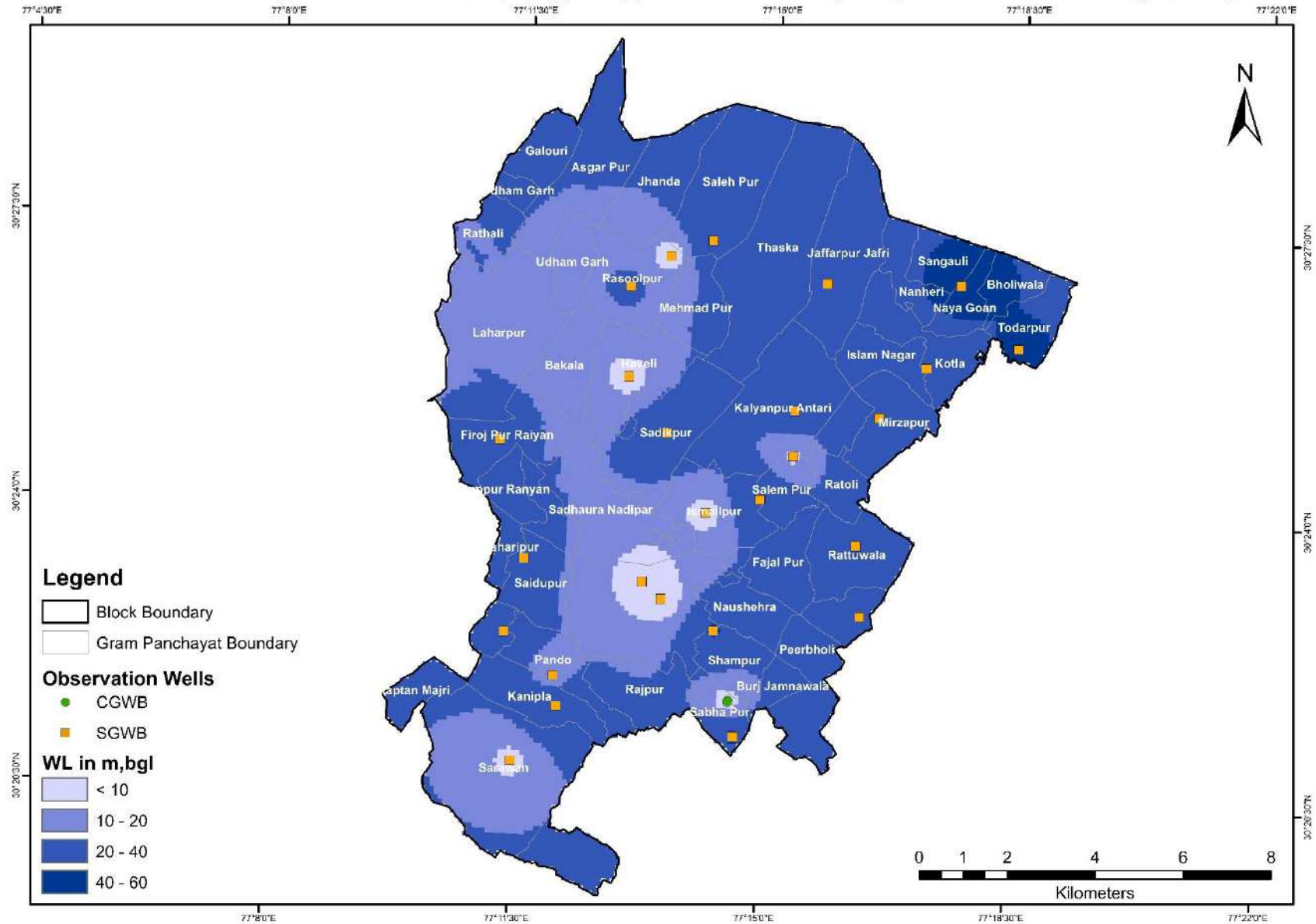
Location of Observation Wells for Monitoring Water Levels and Water Quality, Block-Sadaura (Part), District- Yamunanagar, Haryana



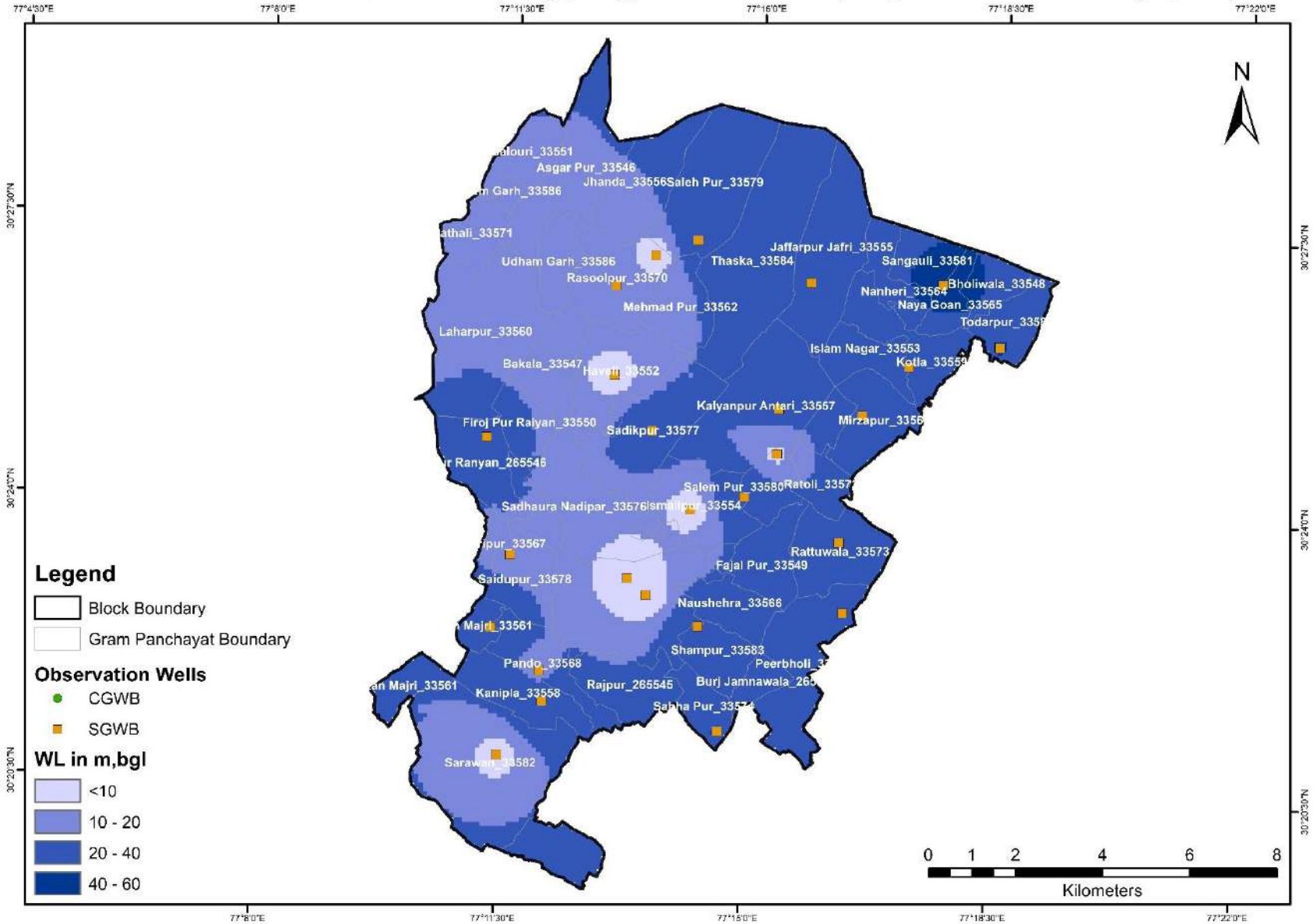
Hydrogeological Map, Block- Sadaura (Part), District- Yamunanagar, Haryana



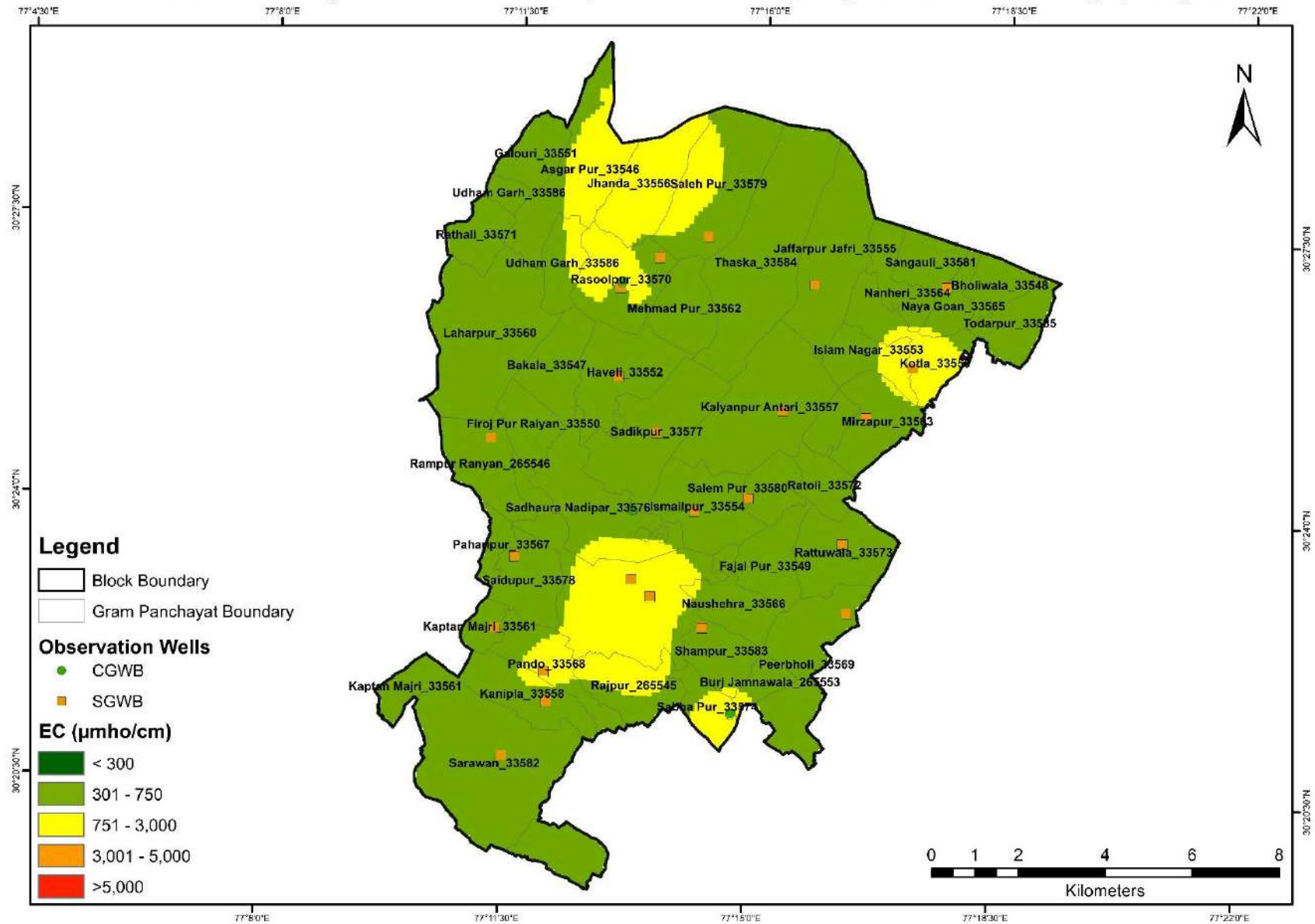
Pre Monsoon 2023 Depth to Water Level (m,bgl) Map, Block - Sadaura (Part), District - Yamunanagar, Haryana



Post Monsoon 2023 Depth to Water Level (m,bgl) Map, Block - Sadaura (Part), District - Yamunanagar, Haryana



Electrical Conductivity of Groundwater-2023, Block - Sadaura (Part), District - Yamunanagar, Haryana



ANNEXURE: I
BASIC DATA OF MONITORING WELLS

State	Haryana				District		Yamuna Nagar			Block		Sadhaura			
S.No	Well ID	GP Name	Name of the village	Site Name	Latitude	Longitude	Type of Well (DW/PZ)	Reduced Level (m,asl)	Aquifer Type/Lithology	Height of Measuring (m,agl)	Depth (m,bgl)	Diameter (m)	Purpose of Monitoring (WL/WQ)	Monitoring Mechanism	Agency
1	Ha_30.4275_77.2165	Haveli_33552	Haveli	Near Sh. Radhe Ram's House	30.42753	77.21652	PZ	319.07	Unconfined to Semi Confined	0.65	70	0.1	Both	Manual	SGWB
2	Is_30.4001_77.2357	Ismailpur_33554	Ismail Majra	In Harizen Basti	30.40014	77.23566	PZ	301.21	Unconfined to Semi Confined	0.65	36.45	0.1	Both	Manual	SGWB
3	Ko_30.4311_77.2867	Kotla_33559	Kotla	Near village road	30.4311	77.28672	PZ	316.44	Unconfined to Semi Confined	0.65	70	0.1	Both	Manual	SGWB
4	Mi_30.4525_77.2255	Rasoolpur_33570	Milk Jublian	North of village settlement and pond	30.45247	77.22551	DW	320.04	Unconfined to Semi Confined	1.25	9.8	2	Both	Manual	SGWB
5	Sa_30.3822_77.2257	Sadhaura	Sadhaura	East of Govt High School	30.38218	77.2257	PZ	304.5	Unconfined to Semi Confined	0.65	33.04	0.1	Both	Manual	SGWB
6	Sa_30.3856_77.2211	Sadhaura	Sadhaura	East of Govt High School	30.38559	77.22114	DW	306.78	Unconfined to Semi Confined	1.25	15.4	2	Both	Manual	SGWB
7	Sa_30.457_77.237	Salem Pur_33580	Salehpur	North of village settlement and pond	30.457	77.237	TW	323.02	Unconfined to Semi Confined	0.7	18.01	0.254	Both	Manual	SGWB

AtalBhujalYojana - Block Hydrogeological Report

8	Sa_30.3482_77.1914	Sarawan_33582	Sarawan	Near village road	30.34818	77.19141	PZ	303.16	Unconfined to Semi Confined	0.65	54.26	0.1	Both	Manual	SGW B
9	W302130077144501	Sabha Pur_33574	Sabri	Sabri	30.3617	77.2422	DW	304	Unconfined to Semi Confined	0.72	11.85	1.5	Both	Manual	CG WB
10	HR_GW_967	Ismailpur_33554	Ismailpur/Jhanda	Govt. Middle school	30.40316	77.24839	PZ	311	Semi-Confined To Confined	0.5	71	0.1	WL	Telemetry	SGW B
11	HR_GW_951	Jaffarpur Jafri_33555	Pammuwala	Govt. Middle School, Jaffarpur Jafri	30.44785	77.26274	PZ	340	Semi-Confined To Confined	0.5	76	1.1	WL	Telemetry	SGW B
12	HR_GW_952	Kalyanpur Antari_33557	Kalyanpur Antari	Govt. Middle school	30.42156	77.25604	PZ	321	Semi-Confined To Confined	0.5	66	2.1	Both	Telemetry	SGW B
13	HR_GW_953	Kanipla_33558	Kanipla	Govt. Middle School, Kanipla	30.3596	77.20169	PZ	303	Unconfined To Semi-Confined	0.5	74	3.1	Both	Telemetry	SGW B
14	HR_GW_954	Kaptan Majri_33561	Kaptan Majri	Govt. Primary School, Kaptan Majri	30.37456	77.18888	PZ	301	Unconfined To Semi-Confined	0.5	75	4.1	Both	Telemetry	SGW B
15	HR_GW_955	Mirzapur_33563	Mirzapur	Govt. Middle School, Mirzapur	30.42065	77.27593	PZ	326	Semi-Confined To Confined	0.5	71	5.1	Both	Telemetry	SGW B

AtalBhujalYojana - Block Hydrogeological Report

16	HR_GW_956	Naya Goan_33565	Nayagoan	Govt. Primary School, Nayagoan	30.44817	77.2943	PZ	333	Semi-Confined To Confined	0.5	81	6.1	Both	Telemetry	SGWB
17	HR_GW_968	Pando_33568	Pando	Govt. Primary School, Pando	30.3659	77.20083	PZ	302	Unconfined To Semi-Confined	0.5	67	7.1	Both	Telemetry	SGWB
18	HR_GW_957	Peerbholi_33569	Peerbholi	Govt. Primary School, Peerbholi	30.3798	77.27274	PZ	312	Unconfined To Semi-Confined	0.5	48	8.1	Both	Telemetry	SGWB
19	HR_GW_958	Rampur Ranyan_265546	Rampur Riyan	Govt. Middle School, Rampur Riyan	30.41386	77.18657	PZ	309	Unconfined To Semi-Confined	0.5	78	9.1	Both	Telemetry	SGWB
20	HR_GW_969	Rasoolpur_33570	Rasoolpur	Govt. Primary School, Rasoolpur	30.44601	77.21633	PZ	316	Unconfined To Semi-Confined	0.5	64	10.1	Both	Telemetry	SGWB
21	HR_GW_960	Rattuwalla_33573	Rattuwalla	Govt. Primary School, Rattuwalla	30.39431	77.27134	PZ	322	Semi-Confined To Confined	0.5	67	11.1	Both	Telemetry	SGWB
22	HR_GW_961	Sabha Pur_33574	Sabhapur	Govt. Middle School, Sabhapur	30.3545	77.24371	PZ	300	Unconfined To Semi-Confined	0.5	71	12.1	Both	Telemetry	SGWB
23	HR_GW_962	Sadikpur_33577	Sadikpur	Govt. Middle School, Sadikpur	30.4162	77.22594	PZ	317	Unconfined To Semi-Confined	0.5	58	13.1	Both	Telemetry	SGWB

AtalBhujalYojana - Block Hydrogeological Report

24	HR_GW_963	Saidupur_33578	Saidupur	Govt. Primary School, Saidupur	30.38965	77.19307	PZ	303	Semi-Confined To Confined	0.5	71	14.1	Both	Telemetry	SGWB
25	HR_GW_964	Saleh Pur_33579	Salehpur	Govt. Middle School, Salehpur	30.45588	77.23544	PZ	330	Semi-Confined To Confined	0.5	76	15.1	WL	Telemetry	SGWB
26	HR_GW_966	Shampur_33583	Shampur	Govt. Primary School, Shampur	30.37604	77.23832	PZ	315	Unconfined To Semi-Confined	0.5	68	16.1	Both	Telemetry	SGWB
27	HR_GW_965	Todarpur_33585	Todarpur	Govt. Primary School, Todarpur	30.4356	77.30829	PZ	345	Semi-Confined To Confined	0.5	75	17.1	Both	Telemetry	SGWB
28	W302650077130001	Rasoolpur_33570	Rasulpur	Rasulpur	30.44722	77.21667	Hand Pump	NA	Alluvium	NA	NA	NA	WQ	Manual	CGWB
29	W302300077133001	Sadhaura Nadipar_33576	Sadaura	Sadaura	30.4	77.22083	Hand Pump	NA	Alluvium	NA	NA	NA	WQ	Manual	CGWB

ANNEXURE: 2
WATER LEVEL (WL) DATA OF MONITORING WELLS

State	Haryana	District	Yamuna Nagar	Block	Sadhaura
Month of Pre-monsoon Water Level Measurement					June
Month of Post-monsoon water Level measurement					October

S.No.	Observation Point	Source	Well Types	Co-ordinate		Water Level (m)																	
				Latitude	Longitude	2015		2016		2017		2018		2019		2020		2021		2022		2023	
						Pre	Post	Pre	Post	Pre	Post	Pre	Post	Pre	Post	Pre	Post	Pre	Post	Pre	Post	Pre	Post
1	Haveli_33552	SG WB	Piezometer	30.4275	77.2165	18.20	17.70	19.20	NA	19.70	18.20	20.95	19.70	21.09	21.87	21.3	20.7	19.80	17.30	18.30	17.80	6.94	5.53
2	Ismailpur_33554	SG WB	Piezometer	30.4001	77.2357	7.70	7.20	7.30	NA	7.43	6.75	7.55	6.97	7.67	6.35	7.95	8.05	6.40	5.55	6.90	6.68	6.63	4.56
3	Kotla_33559	SG WB	Piezometer	30.4311	77.2867	8.92	8.32	7.74	NA	7.83	7.53	10.18	8.70	11.37	13.23	11.5	14.2	14.25	15.90	16.45	17.95	22.83	20.25
4	Rasoolpur_33570	SG WB	Dug Well	30.4525	77.2255	6.37	5.60	6.48	NA	6.55	5.55	6.60	5.67	6.78	4.50	6.9	4.67	5.88	4.68	5.98	4.48	5.68	4.78
5	Sadhaura	SG WB	Piezometer	30.3822	77.2257	7.47	7.28	7.42	NA	7.58	6.08	6.65	6.17	6.81	3.95	7	5.37	4.30	2.70	6.90	6.68	3.50	1.85
6	Sadhaura	SG WB	Dug Well	30.3856	77.2211	6.77	5.90	6.85	NA	6.97	6.07	7.00	6.09	7.15	4.80	7.37	5.87	4.50	2.90	6.90	6.68	3.50	1.85
7	Salem Pur_33580	SG WB	Tube Well	30.4122	77.2559	7.42	7.12	7.62	NA	8.12	7.12	8.62	7.62	9.12	8.87	9.22	8.97	8.78	8.88	9.58	8.08	8.83	8.08
8	Sarawan_33582	SG WB	Piezometer	30.3482	77.1914	9.07	8.88	9.27	NA	9.39	9.29	9.47	9.37	9.61	7.10	9.85	8.37	7.43	6.98	8.48	6.98	8.21	6.45
9	Sabha Pur_33574	CG WB	Dug Well	30.3558	77.2458	6	5.28	6.38	6	8.28	5.81	7.2	3.3	6.43	5.18	NA	5.4	NA	5.4	5.98	5.25	6.46	NA
10	Ismailpur_33554	SG WB	Piezometer	30.4032	77.2484	NA	NA	NA	NA	NA	NA	NA	NA	NA	NA	NA	NA	NA	NA	NA	NA	35.5	36.9
11	Jaffarpur Jafri_33555	SG WB	Piezometer	30.4478	77.2627	NA	NA	NA	NA	NA	NA	NA	NA	NA	NA	NA	NA	NA	NA	NA	NA	36.2	36.5
12	Kalyanpur Antari_33557	SG WB	Piezometer	30.4216	77.256	NA	NA	NA	NA	NA	NA	NA	NA	NA	NA	NA	NA	NA	NA	NA	NA	27.6	23.5

AtalBhujalYojana - Block Hydrogeological Report

13	Kanipla_33 558	SG WB	Piezom eter	30.35 96	77.2017	NA	NA	NA	N A	NA	NA	NA	NA	NA	NA	N A	N A	NA	NA	NA	NA	NA	39.1	39. 8
14	Kaptan Majri_33561	SG WB	Piezom eter	30.37 46	77.1889	NA	NA	NA	N A	NA	NA	NA	NA	NA	NA	N A	N A	NA	NA	NA	NA	NA	27. 3	25. 8
15	Mirzapur_3 3563	SG WB	Piezom eter	30.42 06	77.2759	NA	NA	NA	N A	NA	NA	NA	NA	NA	NA	N A	N A	NA	NA	NA	NA	NA	34. 3	30. 8
16	Naya Goan_3356 5	SG WB	Piezom eter	30.44 82	77.2943	NA	NA	NA	N A	NA	NA	NA	NA	NA	NA	N A	N A	NA	NA	NA	NA	NA	47	46
17	Pando_3356 8	SG WB	Piezom eter	30.36 59	77.200 8	NA	NA	NA	N A	NA	NA	NA	NA	NA	NA	N A	N A	NA	NA	NA	NA	NA	14	15.4
18	Peerbholi_3 3569	SG WB	Piezom eter	30.37 98	77.2727	NA	NA	NA	N A	NA	NA	NA	NA	NA	NA	N A	N A	NA	NA	NA	NA	NA	29.1	27. 3
19	Rampur Ranyan_26 5546	SG WB	Piezom eter	30.413 9	77.1866	NA	NA	NA	N A	NA	NA	NA	NA	NA	NA	N A	N A	NA	NA	NA	NA	NA	22. 5	25. 3
20	Rasoolpur_ 33570	SG WB	Piezom eter	30.44 6	77.2163	NA	NA	NA	N A	NA	NA	NA	NA	NA	NA	N A	N A	NA	NA	NA	NA	NA	21.2	15.9
21	Rattuwala_ 33573	SG WB	Piezom eter	30.39 43	77.2713	NA	NA	NA	N A	NA	NA	NA	NA	NA	NA	N A	N A	NA	NA	NA	NA	NA	23. 2	24. 3
22	Sabha Pur_33574	SG WB	Piezom eter	30.35 45	77.2437	NA	NA	NA	N A	NA	NA	NA	NA	NA	NA	N A	N A	NA	NA	NA	NA	NA	41	40. 1
23	Sadikpur_3 3577	SG WB	Piezom eter	30.416 2	77.2259	NA	NA	NA	N A	NA	NA	NA	NA	NA	NA	N A	N A	NA	NA	NA	NA	NA	34	32.1
24	Saidupur_3 3578	SG WB	Piezom eter	30.38 96	77.1931	NA	NA	NA	N A	NA	NA	NA	NA	NA	NA	N A	N A	NA	NA	NA	NA	NA	24	19.5
25	Saleh Pur_33579	SG WB	Piezom eter	30.45 59	77.2354	NA	NA	NA	N A	NA	NA	NA	NA	NA	NA	N A	N A	NA	NA	NA	NA	NA	37. 2	34. 6
26	Shampur_3 3583	SG WB	Piezom eter	30.37 6	77.2383	NA	NA	NA	N A	NA	NA	NA	NA	NA	NA	N A	N A	NA	NA	NA	NA	NA	40. 7	40. 4
27	Todarpur_3 3585	SG WB	Piezom eter	30.43 56	77.3083	NA	NA	NA	N A	NA	NA	NA	NA	NA	NA	N A	N A	NA	NA	NA	NA	NA	42	40. 2

ANNEXURE: 3
HISTORICAL WATER QUALITY (WQ) DATA OF MONITORING WELLS

State	Haryana	District	Yamuna Nagar	Block	Sadhaura
Month of Collection of sample for WQ monitoring*					June

Village	Source	Type of well	Latitude	Longitude	Year	pH	EC	TDS	TH	Ca	Mg	Na	K	CO ₃	HCO ₃	SO ₄	Cl	F	NO ₃	
Rasulpur	CGWB	Hp	30.44722222	77.21666667	2015	7.05	953	ND	265.4	77.7	17.4	105.0	5.7	0.0	214.2	129.0	128.5	0.19	2.00	
Rasulpur	CGWB	Hp	30.44722222	77.21666667	2016	7.5	950	ND	206.0	47.0	22.0	120.0	24.0	0.0	179.0	118.0	104.0	0.25	95.00	
Rasulpur	CGWB	Hp	30.44722222	77.21666667	2017	7.5	1215	ND	340.0	99.0	22.0	125.0	3.0	0.0	329.0	90.0	125.0	0.39	87.00	
Rasulpur	CGWB	Hp	30.44722222	77.21666667	2018	8.17	1286	ND	310.0	56.0	41.0	158.0	12.0	0.0	24.0	251.0	220.0	0.47	85.00	
Rasulpur	CGWB	Hp	30.44722222	77.21666667	2019	8.67	423	ND	110.0	20.0	15.0	72.7	2.3	36.0	207.0	8.2	21.0	0.47	0.20	
Rasulpur	CGWB	Hp	30.44722222	77.21666667	2020	8.6	380	ND	80.1	20.0	7.3	62.0	2.0	36.0	158.7	0.0	14.2	0.33	0.01	
Rasulpur	CGWB	Hp	30.44722222	77.21666667	2021	8.58	1015	ND	220.2	32.1	34.0	132.0	1.6	62.4	47.6	121.0	148.9	0.29	28.00	
Rasulpur	CGWB	Hp	30.44722222	77.21666667	2022	8.23	565	ND	144.0	24.0	20.4	62.0	3.2	0.0	278.0	0.0	42.0	0.49	0.20	
Rasulpur	CGWB	Hp	30.44722222	77.21666667	2023	7.63	1098	ND	320.0	72.0	34.0	103.0	32.2	0.0	488.0	0.0	127.8	0.85	27.82	
Sabri	CGWB	Tw	30.35833333	77.24583333	2015	Sample not collected from this location														
Sabri	CGWB	Tw	30.35833333	77.24583333	2016	8.4	890	ND	147.0	16.0	26.0	180.0	6.5	0.0	574.0	20.0	35.0	0.25	2.32	
Sabri	CGWB	Tw	30.35833333	77.24583333	2017	8.3	408	ND	174.0	37.0	20.0	44.0	1.6	33.0	204.0	35.0	3.5	0.56	BDL	
Sabri	CGWB	Tw	30.35833333	77.24583333	2018	8.56	450	ND	100.0	16.0	15.0	71.0	2.7	36.0	195.0	ND	21.0	0.47	0.20	
Sabri	CGWB	Tw	30.35833333	77.24583333	2019	8.63	400	ND	110.0	16.0	17.0	67.2	1.6	36.0	159.0	33.0	21.0	0.32	0.20	
Sabri	CGWB	Tw	30.35833333	77.24583333	2020	8.57	383	ND	130.1	24.0	17.0	45.0	1.7	24.0	207.5	0.0	7.1	0.23	0.57	
Sabri	CGWB	Tw	30.35833333	77.24583333	2021	8.41	401	ND	140.1	16.0	24.3	53.0	1.8	31.2	238.0	0.0	14.2	0.47	0.00	
Sabri	CGWB	Tw	30.35833333	77.24583333	2022	8.17	244	ND	88.0	8.0	16.5	21.0	0.9	0.0	134.0	0.0	14.0	0.37	0.10	
Sabri	CGWB	Tw	30.35833333	77.24583333	2023	8.25	780	ND	220.0	48.0	24.3	75.2	37.5	0.0	402.6	14.4	56.8	0.74	1.62	
Sadaura	CGWB	Hp	30.4	77.22083333	2015	8.88	763	ND	214.4	28.6	34.7	85.0	4.2	70.2	166.6	12.0	83.4	0.54	19.00	
Sadaura	CGWB	Hp	30.4	77.22083333	2016	7.55	265	ND	137.0	39.0	9.5	14.0	3.1	0.0	132.0	40.0	14.0	0.06	1.25	

AtalBhujalYojana - Block Hydrogeological Report

Sadaura	CGWB	Hp	30.4	77.22083333	2017	8.3	609	ND	299.0	99.0	13.0	16.0	3.0	56.0	261.0	5.0	14.0	0.26	0.75
Sadaura	CGWB	Hp	30.4	77.22083333	2018	8.18	314	ND	110.0	32.0	7.0	19.0	0.0	0.0	134.0	ND	28.0	0.14	0.20
Sadaura	CGWB	Hp	30.4	77.22083333	2019	8.66	878	ND	230.0	16.0	46.0	95.2	1.2	48.0	207.0	9.6	113.0	0.39	18.00
Sadaura	CGWB	Hp	30.4	77.22083333	2020	8.58	381	ND	110.1	16.0	17.0	55.0	2.2	36.0	146.4	22.0	14.2	0.10	0.27
Sadaura	CGWB	Hp	30.4	77.22083333	2021	8.76	443	ND	110.1	8.0	21.9	86.0	4.2	62.4	190.4	0.0	21.3	0.58	0.00
Sadaura	CGWB	Hp	30.4	77.22083333	2022	8.16	405	ND	98.0	9.0	18.4	47.0	5.1	0.0	222.0	0.0	21.0	0.48	0.20
Sadaura	CGWB	Hp	30.4	77.22083333	2023	7.94	550	ND	220.0	56.0	19.5	40.0	2.2	0.0	305.0	0.0	42.6	0.65	2.44
Kanipla_33558	SGWB	Pz	30.359597	77.201693	2023	8.18	615	362.9	266.4	74.9	19.3	38	14	0	220.2	24	38	0.6	18
Kaptan Majri_33561	SGWB	Pz	30.374555	77.188881	2023	7.82	474	284.4	157.8	51.2	7.2	46.2	5.06	0	130.9	18.5	61.7	0.37	15.1
Mirzapur_33563	SGWB	Pz	30.420646	77.275934	2023	7.81	468	322.92	177.6	51.2	12.1	52.5	5.7	0	148.7	20.9	71.2	0.46	17.2
Pando_33568	SGWB	Pz	30.365903	77.200831	2023	7.96	899	593.3	394.7	94.7	38.5	78	20	0	261.8	42.9	118.8	0.2	42
Peerbholi_33569	SGWB	Pz	30.379801	77.272743	2023	7.04	381	232.4	177.6	53.2	10.8	18	6	0	136.9	12	33.3	0.3	16
Rasoolpur_33570	SGWB	Pz	30.446013	77.216325	2023	7.8	573	366.7	217.1	63.1	14.5	41	21	0	125	26.9	97.4	0.3	24
Rattuwalla_33573	SGWB	Pz	30.394306	77.271343	2023	8.01	563	343	180	50	13.72	55	30	0	160	16	90	0.76	5
Sadikpur_33577	SGWB	Pz	30.416199	77.225942	2023	7.85	470	296.1	187.5	57.2	10.9	33	14	0	107.1	28	61.8	0.8	23
Saidupur_33578	SGWB	Pz	30.389648	77.193069	2023	8.23	444	301.92	162.8	47.3	10.8	49.1	5.3	0	136.8	19.5	66.5	0.37	16.1
Shampur_33583	SGWB	Pz	30.376043	77.238315	2023	8.29	537	332.9	197.4	59.2	12.1	35	17	0	160.7	29.9	45.1	0.5	31
Todarapur_33585	SGWB	Pz	30.435597	77.308285	2023	7.76	463	268.5	148.1	45.3	8.4	43.7	4.7	0	119	17.4	59.3	0.54	14.3
Kalyanpur Antari_33557	SGWB	Pz	30.421555	77.256037	2023	7.74	494	301.34	152.95	47.32	8.44	34	10.8	0	136	24.7	83.1	0.23	21.6
Naya Goan_33565	SGWB	Pz	30.448173	77.294304	2023	7.64	608	389.1	212.1	61.1	14.4	63.3	6.9	0	178.5	25.3	85.5	0.45	20.7
Rampur Ranyan_265546	SGWB	Pz	30.413858	77.186567	2023	7.99	439	272.1	148.1	45.3	8.4	44.3	4.8	0	124.9	17.7	59.3	0.46	14.5
Sabha Pur_33574	SGWB	Pz	30.354498	77.243714	2023	8.15	467	298.9	187.5	55.2	12	34	12	0	148.8	18	68.9	0.8	5

AtalBhujalYojana - Block Hydrogeological Report

Name of District	Name of Block	Source	Name of village/ OW data	Latitude	Longitude	Value of EC June 2020	Value of EC June-2021	Value of EC June-2022	Value of EC June-2023
Yamunanagar_76	Sadaura (Part)_565	SGWB	Milk Jublian	30.45247	77.225511	850	900	900	570
Yamunanagar_76	Sadaura (Part)_565	SGWB	Haveli	30.42753	77.21652	800	800	650	460
Yamunanagar_76	Sadaura (Part)_565	SGWB	Sadhoura	30.38218	77.225704	NA	NA	450	1190
Yamunanagar_76	Sadaura (Part)_565	SGWB	Kotla	30.4311	77.286722	800	1200	900	1000
Yamunanagar_76	Sadaura (Part)_565	SGWB	Sarawan	30.34818	77.191408	500	1000	800	430
Yamunanagar_76	Sadaura (Part)_565	SGWB	Ismail Majra	30.40014	77.235659	650	1100	600	480
Yamunanagar_76	Sadaura (Part)_565	SGWB	Salehpur	30.457	77.237	650	900	650	670
Yamunanagar_76	Sadaura (Part)_565	SGWB	Sadhoura	30.38559	77.221143	950	1250	900	1190
Yamunanagar_76	Sadaura (Part)_565	SGWB	Kanipla_33558	30.3596	77.201693	NA	NA	NA	615
Yamunanagar_76	Sadaura (Part)_565	SGWB	Kaptan Majri_33561	30.37456	77.188881	NA	NA	NA	474
Yamunanagar_76	Sadaura (Part)_565	SGWB	Mirzapur_33563	30.42065	77.275934	NA	NA	NA	468
Yamunanagar_76	Sadaura (Part)_565	SGWB	Pando_33568	30.3659	77.200831	NA	NA	NA	899
Yamunanagar_76	Sadaura (Part)_565	SGWB	Peerbholi_33569	30.3798	77.272743	NA	NA	NA	381
Yamunanagar_76	Sadaura (Part)_565	SGWB	Rasoolpur_33570	30.44601	77.216325	NA	NA	NA	573
Yamunanagar_76	Sadaura (Part)_565	SGWB	Rattuwala_33573	30.39431	77.271343	NA	NA	NA	563
Yamunanagar_76	Sadaura (Part)_565	SGWB	Sadikpur_33577	30.4162	77.225942	NA	NA	NA	470
Yamunanagar_76	Sadaura (Part)_565	SGWB	Saidupur_33578	30.38965	77.193069	NA	NA	NA	444

AtalBhujalYojana - Block Hydrogeological Report

Yamunanagar_76	Sadaura (Part)_565	SGWB	Shampur_33583	30.37604	77.238315	NA	NA	NA	537
Yamunanagar_76	Sadaura (Part)_565	SGWB	Todarpur_33585	30.07121	77.271614	NA	NA	NA	463
Yamunanagar_76	Sadaura (Part)_565	SGWB	Kalyanpur Antari_33557	30.42156	77.256037	NA	NA	NA	494
Yamunanagar_76	Sadaura (Part)_565	SGWB	Naya Goan_33565	30.44817	77.294304	NA	NA	NA	608
Yamunanagar_76	Sadaura (Part)_565	SGWB	Rampur Ranyan_265546	30.41386	77.186567	NA	NA	NA	439
Yamunanagar_76	Sadaura (Part)_565	SGWB	Sabha Pur_33574	30.07887	77.23481	NA	NA	NA	467