

# ATAL BHUJAL YOJANA (AtalJal)

**State : HARYANA**

**Department : IRRIGATION & WATER  
RESOURCE DEPARTMENT**

**BLOCK : KARNAL**

**DISTRICT : KARNAL**

**YEAR : 2024-2025**

---

*Towards partial fulfilment of requirements for Disbursement of  
Incentive under DLI -1*

---

# HYDROGEOLOGICAL REPORT

## (YEAR: 2024-25)

STATE	:	HARYANA
DISTRICT	:	KARNAL
BLOCK/TALUK	:	KARNAL
BLOCK/TALUK HQs	:	KARNAL

A GENERAL INFORMATION					
1.	Geographical area (Ha)	:	28811		
2.	No. of Gram Panchayats	:	41		
3.	No. of towns	:	2		
4.	No. of villages	:	57		
5.	Population (2011)	:	Male	Female	Total
			57610	54385	111995
6.	Rainfall (mm) (2023)	:	Monsoon	Non-monsoon	Annual
			453	302	755
7.	River basin	:	Yamuna river basin and partially in Ghaggar basin		
8.	Major soil types	:	Loamy to Sandy loamy in texture		

B LAND USE (2024-25)			
1.	Forest area (Ha)	:	82.8
2.	Cultivable area (Ha)	:	22006
3.	Net sown area (Ha)	:	22006
4.	Gross cropped area (Ha)	:	43736

C CROPPING PATTERN (As in 2024-25)						
1.	Major crops grown	:	Kharif	Rabi	Summer	Perennial
			Paddy	Wheat	Moong	Sugar cane
			Jawar	Mustard	Maize	
			Seasonal vegetable	Potato & other seasonal vegetable		

D IRRIGATION FACILITIES (As in 2024-25)							
1.	Net irrigated area (Ha)	:	21992				
2.	Gross irrigated area (Ha)	:	43736				
3.	Area under irrigation (Ha) (Source-wise)	:	DW	BW/TW	Tanks/Ponds	Canals	Others
			0	20587		1405	0

E GEOLOGY & HYDROGEOLOGY			
1.	Predominant rocktype	:	Sand, Silt, Clay and Kankar
2.	Major geological formations	:	Older & Newer Alluvium
3.	Important water-bearing formations	:	Sand & Silt mixed with Kankar at some places
4.	Status of coverage under NAQUIM	:	Covered

AtalBhujalYojana - Block Hydrogeological Report

F GROUND WATER CONDITIONS											
1	No. of wells used for Water Level (WL) monitoring.	:	Open wells				BW/TW/ PZ				
			CGWB	SGWB	Atal Jal	Total	CGWB	SGWB	Atal Jal	Total	
			0	0	0	0	12	17	51	80	
2	Monitoring mechanism (Nos.)	:	Manual			DWLR			Telemetry		
			CGWB	SGWB	Atal Jal	CGWB	SGWB	Atal Jal	CGWB	SGWB	Atal Jal
			12	9	33	0	8	18	0	8	18
3	Monitoring frequency	:	Agency	No. of times monitored/year							
			CGWB	2 times/year Pre and Post Monsoon							
			SGWB	2 times/year Pre and Post Monsoon							
			Atal Jal	2 times/year Pre and Post Monsoon							
4	Period of water level data availability.	:	Agency	Period of WL data availability (From - To)							
				From (year)			To (year)				
			CGWB	2015			2024				
			SGWB	2015			2024				
			Atal Jal	2023			2024				
5	Water level range (m.bgl)	:	Minimum/Village				Maximum/Village				
	Pre-monsoon (May - June 2024)		6.45/Jaroli Khurd				23.07/Kachhwa_30980				
	Post-monsoon (Oct/Nov 2024)		7.1/Ramba_31005				25.22/Kachhwa_30980				
6	Seasonal WL fluctuation range (m)	:	Minimum/ Village				Maximum/ Village				
			-3.89/Pundrak_31004				8.49/Chorpur I(D)				

G GROUND WATER QUALITY											
1	No. of wells used for Water Quality (WQ) monitoring.	:	Open Wells				BW/TW/ PZ				
			CGWB	SGWB	Atal Jal	Total	CGWB	SGWB	Atal Jal	Total	
			0	0	0	0	9	18	40	67	
2	Monitoring frequency	:	Agency	No. of times monitored/year							
			CGWB	1 time/year							
			SGWB	1 time/year							
			Atal Jal	1 time/year							
3	Period of water quality data availability	:	Agency	Period of WQ data availability (Years)							
			CGWB	2015 to 2024							
			SGWB	2020 to 2024							
			Atal Jal	2023 to 2024							
4	Parameters analysed	:	Agency	Parameters Analysed							
			CGWB	pH,EC,TH,Ca,Mg,Na,K,CO <sub>3</sub> ,HCO <sub>3</sub> , SO <sub>4</sub> ,Cl,F,NO <sub>3</sub>							
			SGWB	EC							
			Atal Jal	pH,EC,TDS,TH,Ca,Mg,Na,K,CO <sub>3</sub> ,HCO <sub>3</sub> , SO <sub>4</sub> ,Cl,F,NO <sub>3</sub>							
5	Known ground water quality issues, if any	:	No Such Issue								

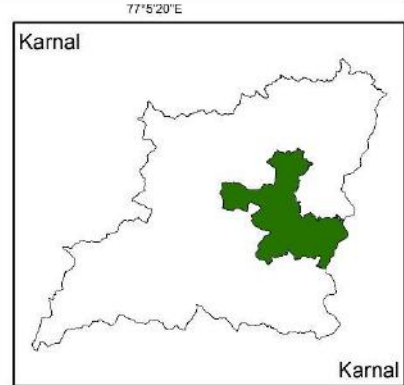
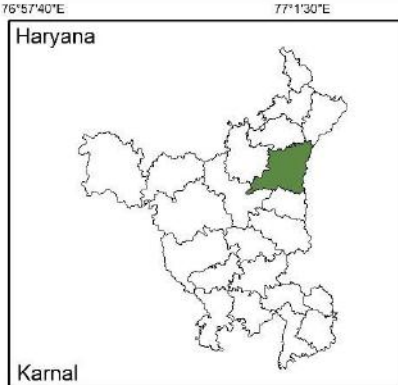
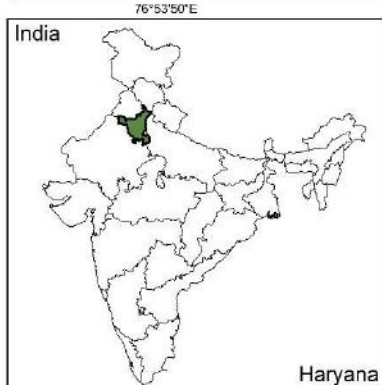
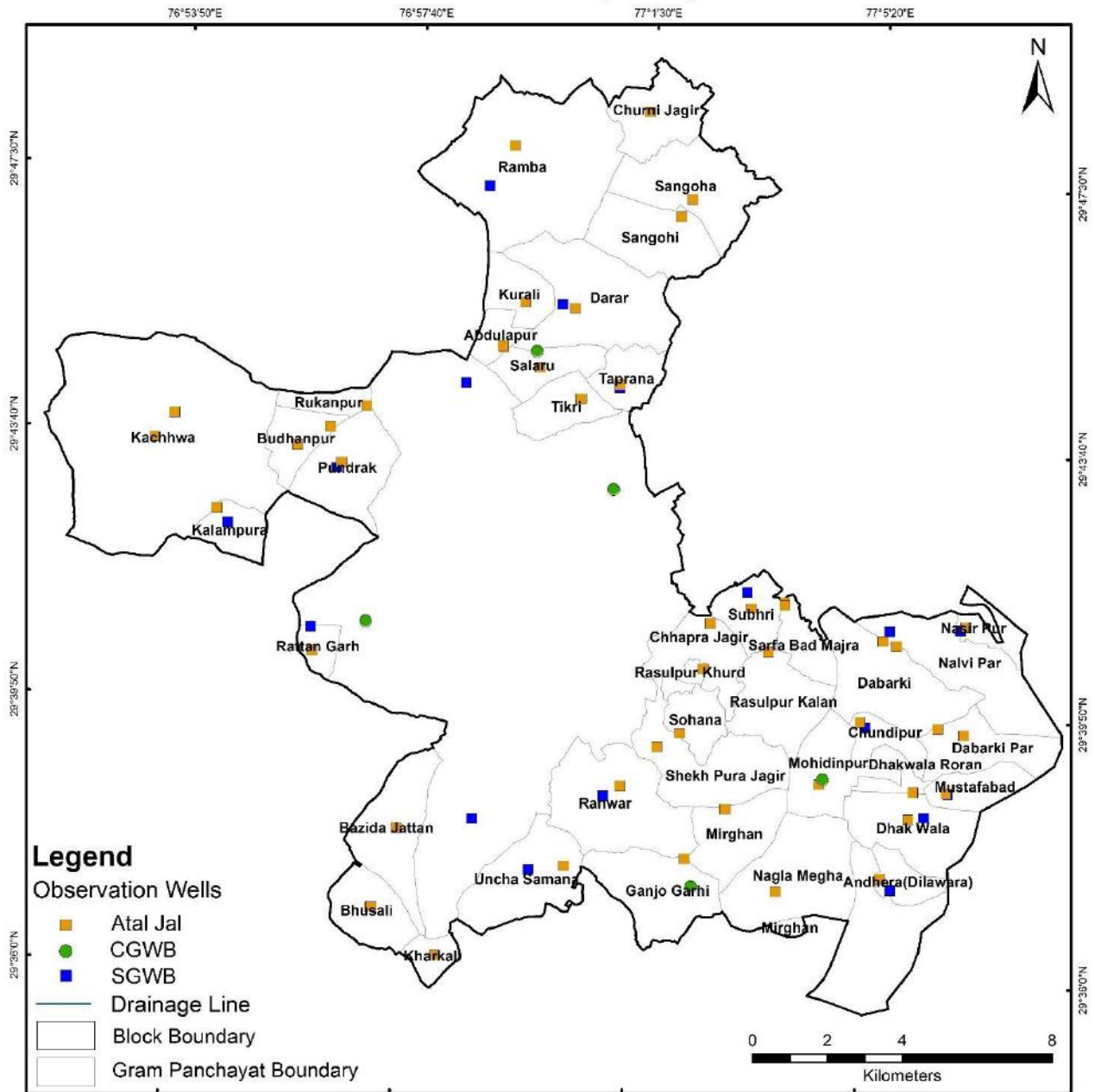
H. GROUND WATER RESOURCES									
1.	Latest assessment year	:	2023						
2.	Assessment Unit	:	Block						
3.	Annual extractable GW resource (ha.m)	:	10922.1						
4.	Current annual GW extraction (ha.m)	:	17971.4						
5.	Net GW availability for future use (ha.m)	:	0.0						
6.	Stage of GW extraction (%)	:	169.48 %						
7.	Category of block/taluk/(2023)	:	Over Exploited						
8.	Category of block/taluk/ in previous assessments		2023	2020	2017	2013	2011	2009	2004
			Over Exploited	Over Exploited	Over Exploited	Over Exploited	Over Exploited	Over Exploited	Over Exploited

I WATER-RELATED SCHEMES				
1.	Schemes with a bearing on ground water, being implemented in the block / taluk.			
	Centrally Sponsored /Central Sector Schemes	i)	PMKSY	
		ii)	JJM	
		iii)	MGNREGA	
		iv)	RKVY	
	State Schemes	i)	State Plan Scheme (Head 2402)	
		ii)	MPMV	
		iii)		
		iv)		

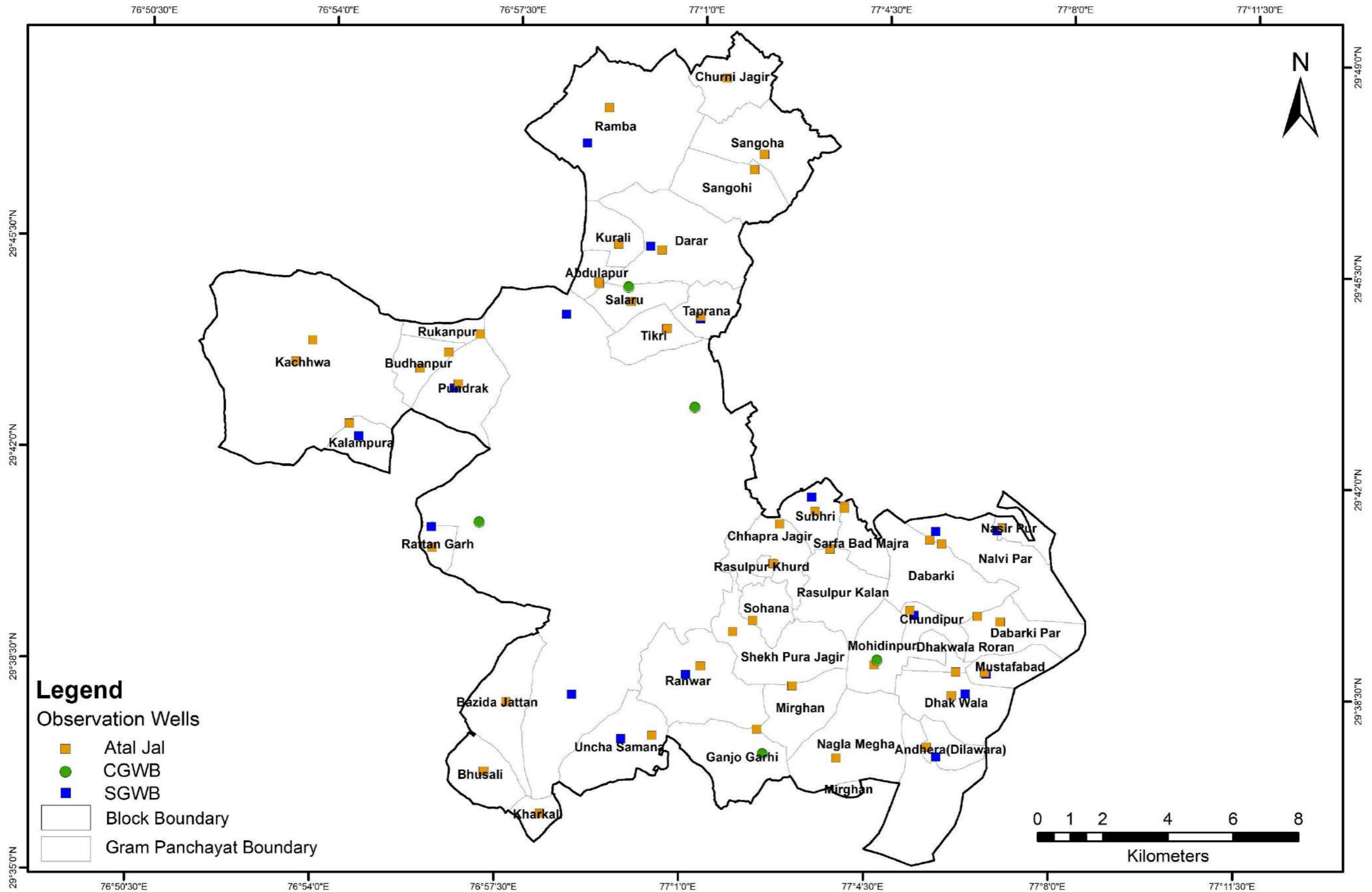
J GROUND WATER RELATED ISSUES		
1.	Ground water related issues of the block/	
	i) Issues related to GW availability	: Due to over exploitation of Groundwater subsequently the present stage of ground water extraction is 169.48%
	ii) Issues related to GW quality	: Ground water is alkaline in nature and is fresh to moderately saline.
	iii) Other issues if any.	: No

K ANNEXURES	
I	Basic data of observation wells – Attached
II.	Historical water level data – Attached
III.	Historical water quality data – Attached

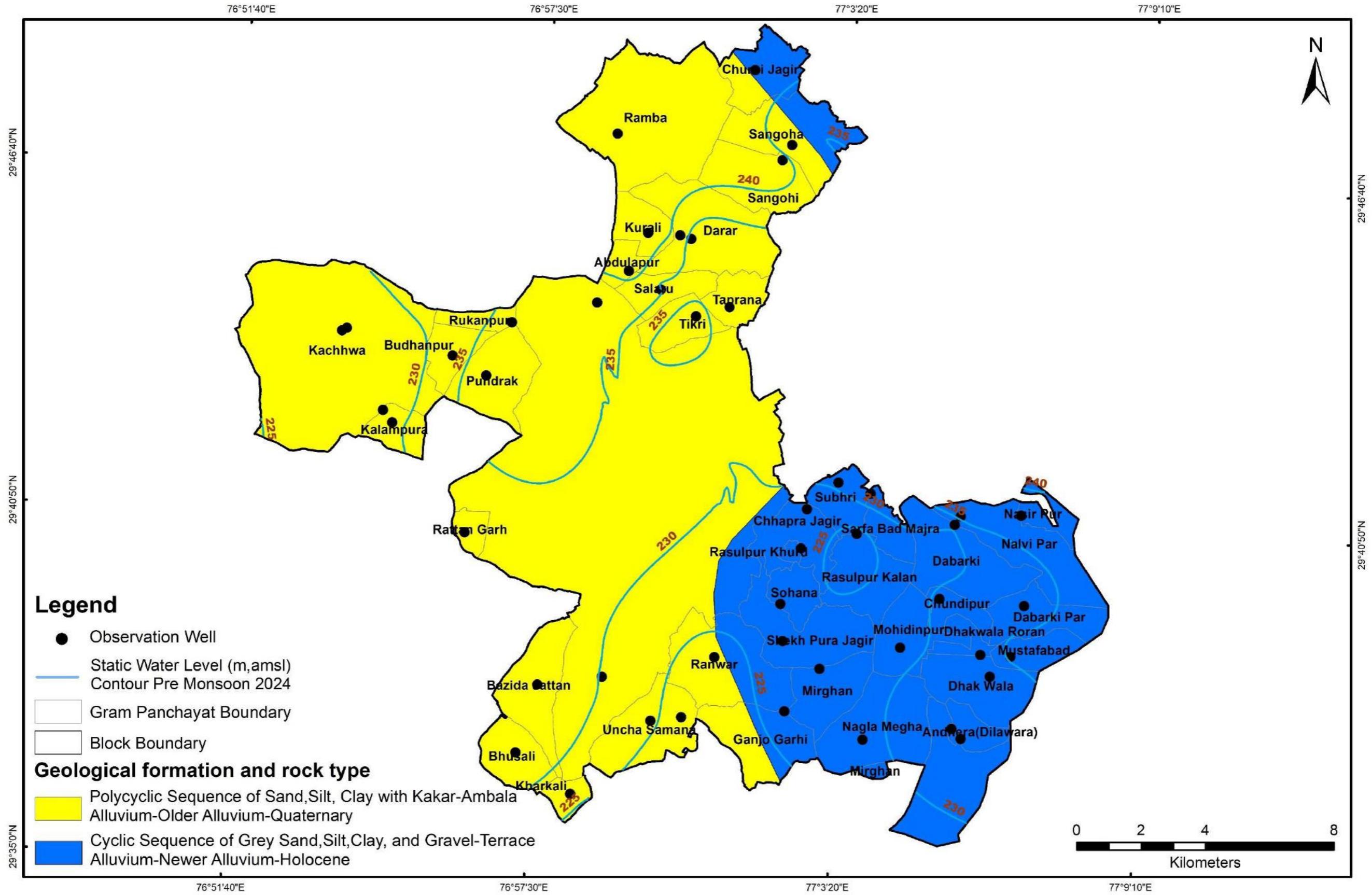
## Location Map of Block-Karnal, District- Karnal, Haryana



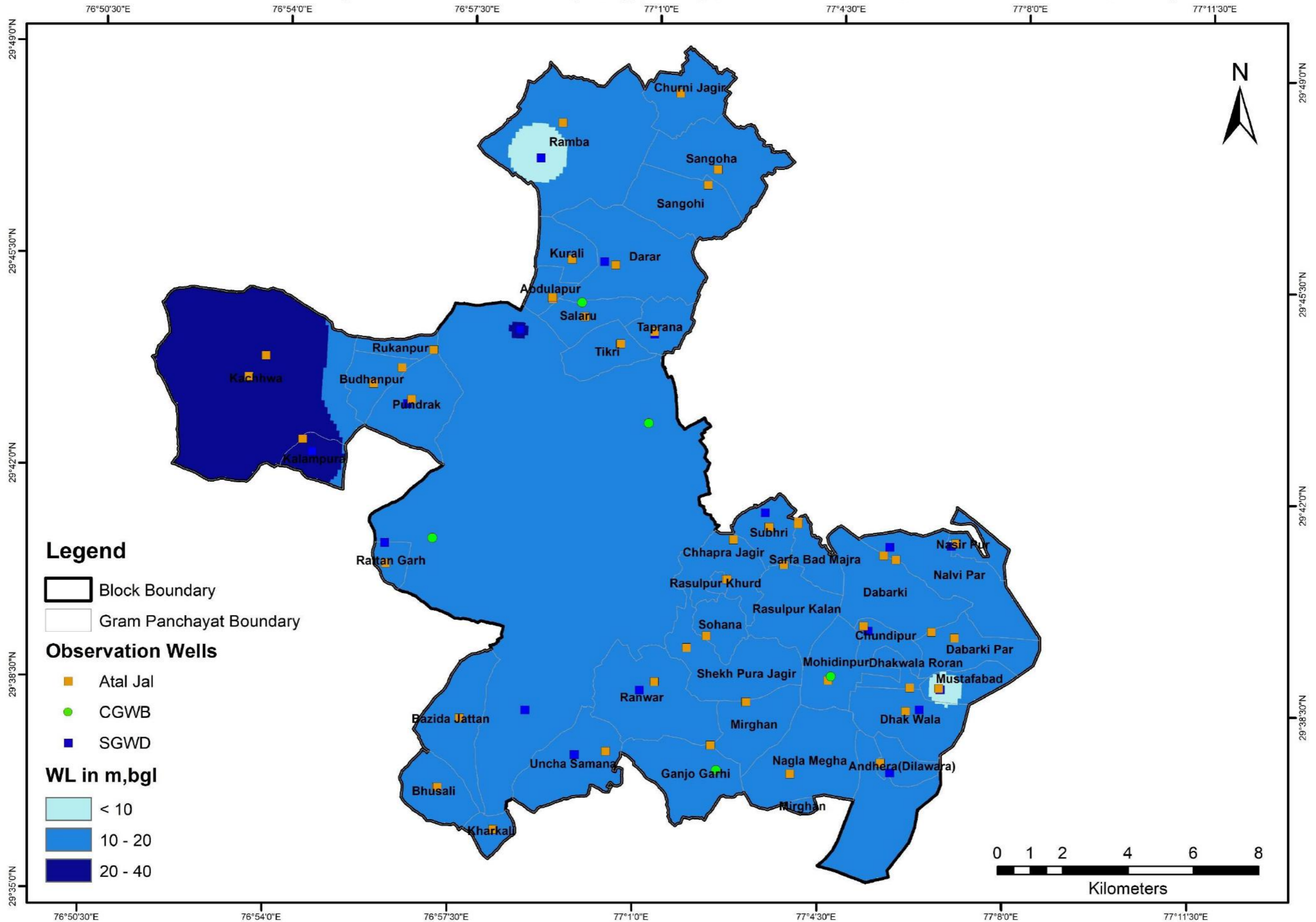
## Location of Observation Wells for Monitoring Water Levels and Water Quality, Block-Karnal, District- Karnal, Haryana



# Hydrogeological Map, Block- Karnal, District- Karnal, Haryana

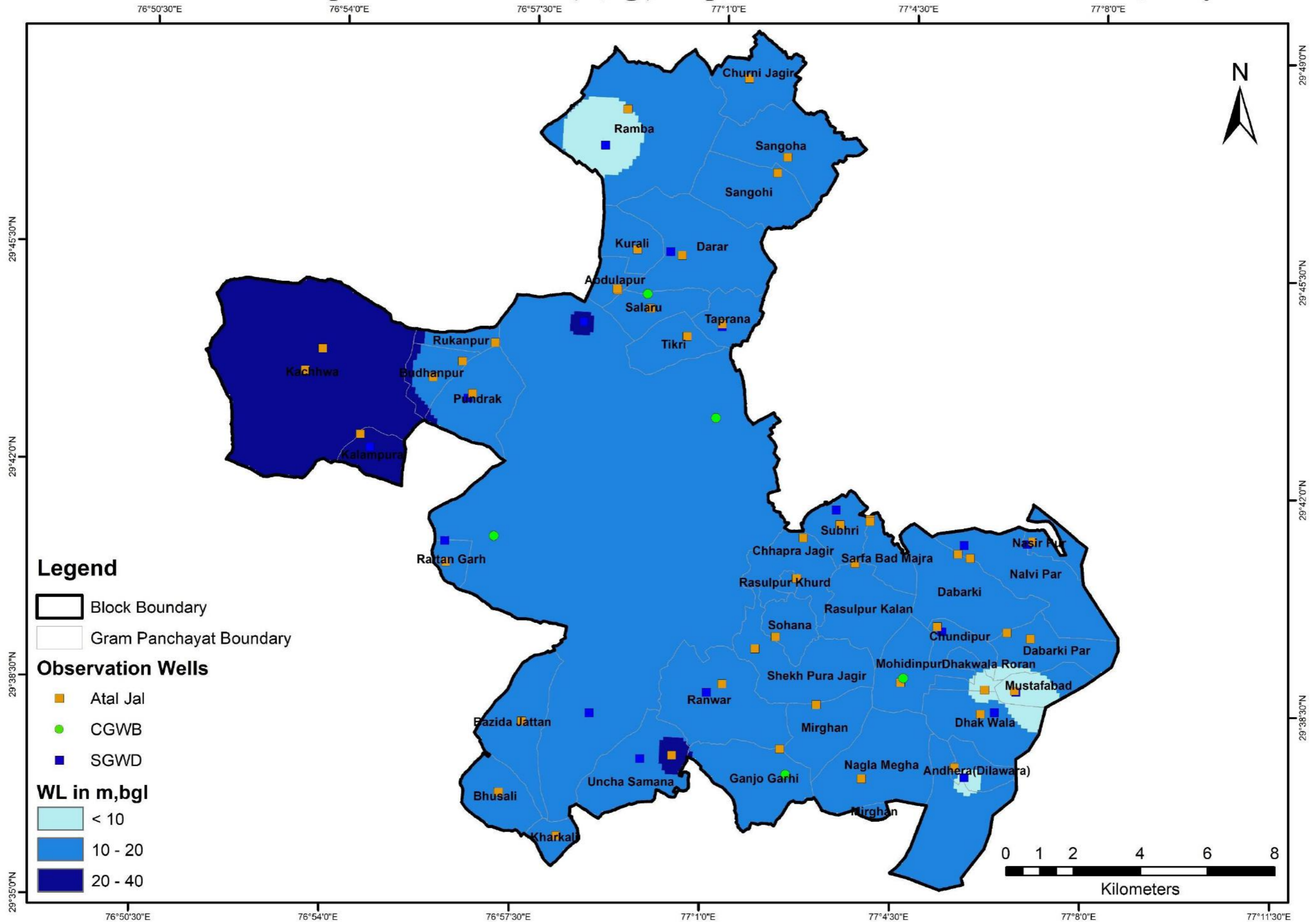


## Pre Monsoon 2024 Depth to Water Level (m,bgl) Map, Block - Karnal, District - Karnal, Haryana

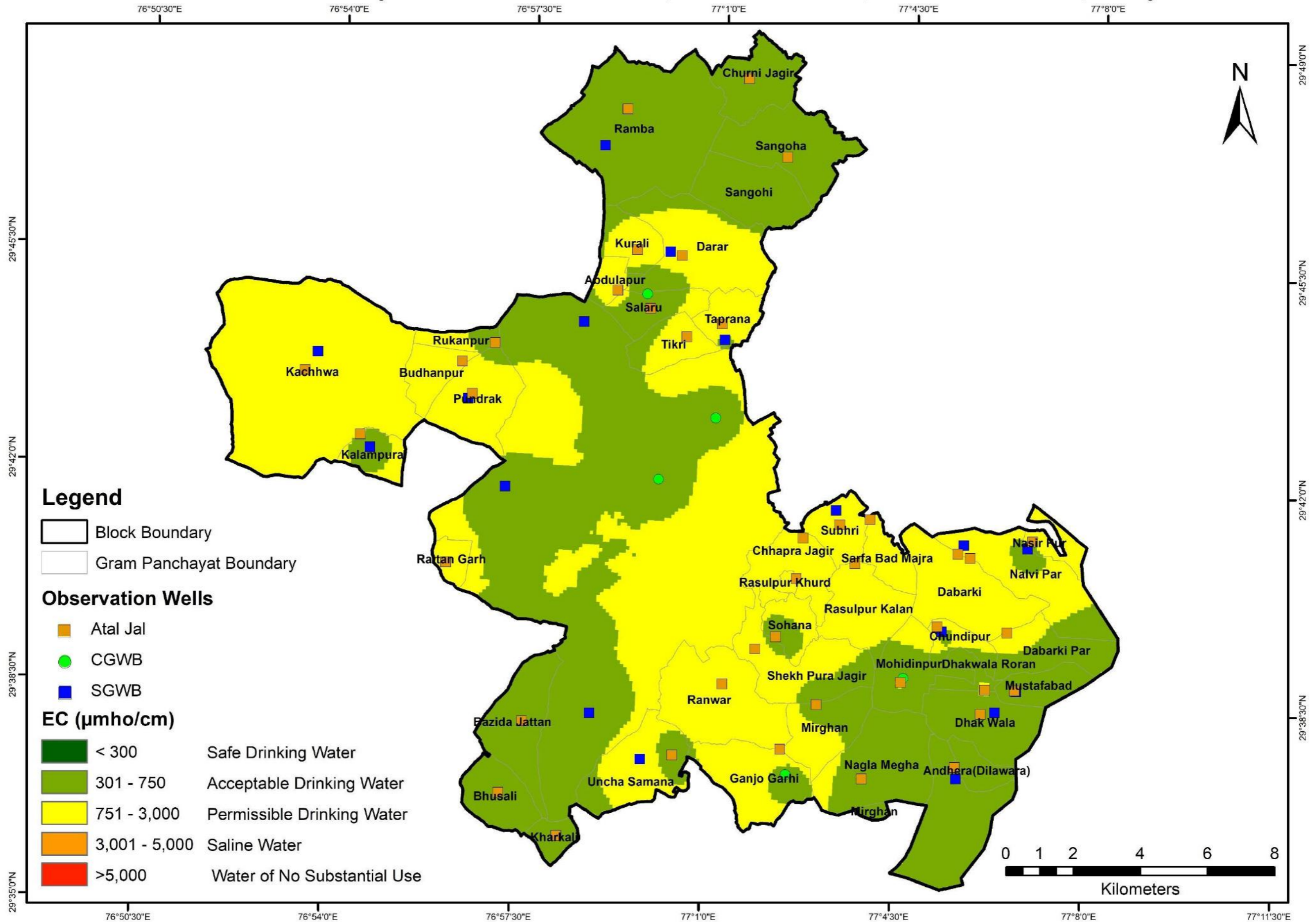




# Post Monsoon 2024 Depth to Water Level (m,bgl) Map, Block - Karnal, District - Karnal, Haryana



# Electrical Conductivity of Groundwater-2024, Block - Karnal, District - Karnal, Haryana



**ANNEXURE: I**  
**BASIC DATA OF MONITORING WELLS**

State	Haryana			District	Karnal			Block	Karnal						
S.No	Well ID	Gram Panchayat	Name of the village	Site Name	Latitude	Longitude	Type of Well	Reduced Level	Aquifer Type/Lithology	Height of Measuring (m, agl)	Depth (m,bgl)	Diameter (m)	Purpose of Monitoring (WL/WQ)	Monitoring Mechanism	Agency
1.	GWL-06-067-00514-00030962-002	Abdulapur_30962	Abdullapur	Water Supply	29.7507	76.9853	Tube Well	255	Unconfined to Semi-Confined	0.00	128	0.30	WL	Manual	Atal Jal-Private
2.	KAR_Kar_ABD_1	Abdulapur_30962	Abdulapur	Abdulapur Phed (T.W)	29.7503	76.9855	Tube Well	254	Unconfined to Semi-confined / Sand, Silt, Clay.	0.00	95	0.30	WQ	Manual	Atal Jal
3.	HR_GW_383	Andhera(Dilawara)_246035	Andhera	Government Primary School, Andhera	29.6255	77.0938	Piezometer	246	Unconfined To Semi-Confined	0.50	57	0.10	Both	Telemetric	Atal Jal
4.	HR_GW_384	Bazida Jattan_30963	Bazida Jattan	Gram Sachivalaya, Bazida Jattan	29.6339	76.9606	Piezometer	248	Unconfined To Semi-Confined	0.50	41	0.10	Both	Telemetric	Atal Jal
5.	GWL-06-067-00514-00030966-001	Bhusali_30966	Bhusali	Phed Tubewell	29.6147	76.9543	Tube Well	248	Unconfined to Semi-Confined	0.00	131	0.30	WL	Manual	Atal Jal-Private
6.	KAR_KAR_BHU_1	Bhusali_30966	Bhusali	Bhusali Phed (T.W)	29.6146	76.9541	Tube Well	248	Unconfined to Semi-confined / Sand, Silt, Clay.	0.00	107	0.30	WQ	Manual	Atal Jal
7.	GWL-06-067-00514-00030967-001	Budhanpur_30967	Budhanpur	Old Phed Tubewell	29.7253	76.9297	Tube Well	251	Unconfined to Semi-Confined	0.00	94	0.30	WL	Manual	Atal Jal-Private
8.	KAR_KAR_BUD_1	Budhanpur_30967	Budhanpur	Budhanpur Phed (T.W)	29.7299	76.9386	Tube Well	251	Unconfined to Semi-confined / Sand, Silt, Clay.	0.00	79	0.30	WQ	Manual	Atal Jal
9.	HR_GW_385	Chhapra Jagir_30968	Chhapra Jagir	Ambedkar Land, Chhapra Jagir.	29.6856	77.0451	Piezometer	247	Unconfined To Semi-Confined	0.50	57	0.10	Both	Telemetric	Atal Jal
10.	KAR_KAR_CHU_1	Chundipur_30971	Chundipur	Chundipur Phed (T.W)	29.6630	77.0872	Tube Well	245	Unconfined to Semi-confined / Sand, Silt, Clay.	0.00	43	0.30	WQ	Manual	Atal Jal
11.	HR_GW_386	Churni Jagir_30972	Churni Jagir	Government Primary School, Churni Jagir	29.8082	77.0237	Piezometer	257	Unconfined To Semi-Confined	0.50	77	0.10	Both	Telemetric	Atal Jal
12.	GWL-06-067-00514-00298003-001	Dabarki Par_298003	Dabarkipar	Farmer Tubewell	29.6606	77.1159	Tube Well	247	Unconfined to Semi-Confined	0.42	61	0.25	WL	Manual	Atal Jal-Private
13.	KAR_KAR_DABPAR_1	Dabarki Par_298003	Dabarki Par	Dabarki Par Phed (T.W)	29.6620	77.1086	Tube Well	247	Unconfined to Semi-confined / Sand, Silt, Clay.	0.42	85	0.25	WQ	Manual	Atal Jal
14.	HR_GW_387	Dabarki_30973	Dabarki	Government Sr Sec School, Dabarki	29.6826	77.0928	Piezometer	246	Unconfined To Semi-Confined	0.50	69	0.10	Both	Telemetric	Atal Jal
15.	HR_GW_388	Darar_30975	Darar	Government Sr Sec School, Darar	29.7603	77.0050	Piezometer	250	Unconfined To Semi-Confined	0.50	73	0.10	Both	Telemetric	Atal Jal
16.	KAR_KAR_DHAKGUJ_1	Dhak Wala_30976	Dhak Wala	Dhak Wala Phed (T.W)	29.6399	77.1013	Tube Well	247	Unconfined to Semi-confined / Sand, Silt, Clay.	0.45	152	0.25	WQ	Manual	Atal Jal
17.	HR_GW_400	Dhakwala Roran_265061	Dhakwala Roran	Government Primary School, Dhakwala Roran	29.6465	77.1023	Piezometer	245	Unconfined To Semi-Confined	0.50	68	0.10	Both	Telemetric	Atal Jal

AtalBhujalYojana - Block Hydrogeological Report

18.	HR_GW_389	Ganjo Garhi_30977	Ganjo Garhi	Panchayat Ghar, Ganjogarhi	29.6288	77.0401	Piezometer	246	Unconfined To Semi-Confined	0.50	67	0.10	Both	Telemetric	Atal Jal
19.	KAR_KAR_KACH_1	Kachhwa_30980	Kachhwa	Kachhwa Phed (T.W)	29.7261	76.8904	Tube Well	249	Unconfined to Semi-confined / Sand, Silt, Clay.	0.37	107	0.21	WQ	Manual	Atal Jal
20.	HR_GW_390	Kalampura_30981	Kalampura	Government High School, Kalampura	29.7094	76.9080	Piezometer	248	Unconfined To Semi-Confined	0.50	72	0.10	Both	Telemetric	Atal Jal
21.	HR_GW_391	Kharkali_30983	Kharkali	Government Primary School, Kharkali	29.6036	76.9723	Piezometer	245	Unconfined To Semi-Confined	0.50	69	0.10	Both	Telemetric	Atal Jal
22.	GWL-06-067-00514-00030986-001	Kurali_30986	Kurali	Phed Tubewell	29.7615	76.9911	Tube Well	255	Unconfined to Semi-Confined	0.00	107	0.30	WL	Manual	Atal Jal- Private
23.	KAR_KAR_KUR_1	Kurali_30986	Kurali	Kurali Phed (T.W)	29.7614	76.9912	Tube Well	255	Unconfined to Semi-confined / Sand, Silt, Clay.	0.41	98	0.26	WQ	Manual	Atal Jal
24.	GWL-06-067-00514-00030992-001	Mirghan_30992	Mirghan	Near Shiv Mandir Meruth Road Mirghan	29.6411	77.0508	Tube Well	242	Unconfined to Semi-Confined	0.00	107	0.30	WL	Manual	Atal Jal- Private
25.	KAR_KAR_MIR_1	Mirghan_30992	Mirghan	Mirghan Phed (T.W)	29.6411	77.0507	Tube Well	242	Unconfined to Semi-confined / Sand, Silt, Clay.	0.00	107	0.30	WQ	Manual	Atal Jal
26.	HR_GW_392	Mohindipur_30994	Mohindipur	Government Sr. Sec. School, Mohindipur	29.6477	77.0765	Piezometer	245	Unconfined To Semi-Confined	0.50	67	0.10	Both	Telemetric	Atal Jal
27.	KAR_KAR_MUS_1	Mustafabad_30996	Mustafabad	Mustafabad Phed (T.W)	29.6465	77.1115	Tube Well	245	Unconfined to Semi-confined / Sand, Silt, Clay.	0.62	91	0.10	WQ	Manual	Atal Jal
28.	GWL-06-067-00514-00030998-001	Nagla Megha_30998	Nagla Megha	Phed Tubewell	29.6216	77.0654	Tube Well	244	Unconfined to Semi-Confined	0.00	198	0.30	WL	Manual	Atal Jal- Private
29.	KAR_KAR_NAG_1	Nagla Megha_30998	Nagla Megha	Nagla Megha Phed (T.W)	29.6216	77.0654	Tube Well	244	Unconfined to Semi-confined / Sand, Silt, Clay.	0.00	183	0.30	WQ	Manual	Atal Jal
30.	KAR_KAR_NAL_1	Nalvi Par_31001	Nalvi Par	Nalvi Par Phed (T.W)	29.6816	77.0966	Tube Well	247	Unconfined to Semi-confined / Sand, Silt, Clay.	0.62	91	0.10	WQ	Manual	Atal Jal
31.	KAR_KAR_NAS_1	Nasir Pur_31002	Nasir Pur	Nasir Pur Phed (T.W)	29.6866	77.1155	Tube Well	246	Unconfined to Semi-confined / Sand, Silt, Clay.	0.62	91	0.10	WQ	Manual	Atal Jal
32.	KAR_KAR_PUN_1	Pundrak_31004	Pundrak	Pundrak Phed (T.W)	29.7213	76.9420	Tube Well	250	Unconfined to Semi-confined / Sand, Silt, Clay.	0.39	107	0.20	WQ	Manual	Atal Jal
33.	KAR_KAR_RAM_1	Ramba_31005	Ramba	Ramba Phed (T.W)	29.7990	76.9867	Tube Well	254	Unconfined to Semi-confined / Sand, Silt, Clay.	0.66	137	0.18	WQ	Manual	Atal Jal
34.	KAR_KAR_RAN_1	Ranwar_31006	Ranwar	Ranwar Phed (T.W)	29.6457	77.0217	Tube Well	247	Unconfined to Semi-confined / Sand, Silt, Clay.	0.62	40	0.10	WQ	Manual	Atal Jal
35.	HR_GW_399	Rasulpur Kalan_31007	Rasulpur Kalan	Community Banquet Hall, Rasulpur Kalan	29.6792	77.0613	Piezometer	240	Unconfined To Semi-Confined	0.50	67	0.10	Both	Telemetric	Atal Jal
36.	GWL-06-067-00514-00031008-001	Rasulpur Khurd_31008	Rasulpur Khurd	Water Supply	29.6746	77.0436	Tube Well	246	Unconfined to Semi-Confined	0.00	107	0.25	WL	Manual	Atal Jal- Private
37.	KAR_KAR_RASKHU_1	Rasulpur Khurd_31008	Rasulpur Khurd	Rasulpur Khurd Phed (T.W)	29.6746	77.0434	Tube Well	246	Unconfined to Semi-confined / Sand, Silt, Clay.	0.00	91	0.25	WQ	Manual	Atal Jal
38.	HR_GW_393	Rattan Garh_31009	Rattangarh	Vyamshala Ground, Rattangarh.	29.6759	76.9355	Piezometer	247	Unconfined To Semi-Confined	0.50	69	0.10	Both	Telemetric	Atal Jal
39.	HR_GW_394	Rukanpur_246034	Rukanpur	Shamshan Ghat, Rukanpur	29.7352	76.9484	Piezometer	252	Unconfined To Semi-Confined	0.50	73	0.10	Both	Telemetric	Atal Jal

AtalBhujalYojana - Block Hydrogeological Report

40.	HR_GW_397	Salaru_31012	Salaru	Government Primary School, Salaru	29.7458	76.9958	Piezometer	253	Unconfined To Semi-Confined	0.50	76	0.10	Both	Telemetric	Atal Jal
41.	HR_GW_395	Sangoha_31013	Sangoha	Punjabi Dharmshala, Sangoha	29.7875	77.0363	Piezometer	252	Unconfined To Semi-Confined	0.50	73	0.10	Both	Telemetric	Atal Jal
42.	GWL-06-067-00514-00031014-001	Sangohi_31014	Sangohi	Phed Tubewell	29.7832	77.0334	Tube Well	252	Unconfined to Semi-Confined	0.00	55	0.30	WL	Manual	Atal Jal-Private
43.	GWL-06-067-00514-00031015-001	Sarfa Bad Majra_31015	Sarfabad Majra	Water Supply	29.6906	77.0654	Tube Well	246	Unconfined to Semi-Confined	0.47	137	0.30	WL	Manual	Atal Jal-Private
44.	KAR_KAR_SARF_1	Sarfa Bad Majra_31015	Sarfabad Majra	Sarfabad Majra Phed (T.W)	29.6911	77.0654	Tube Well	246	Unconfined to Semi-confined / Sand, Silt, Clay.	0.47	104	0.30	WQ	Manual	Atal Jal
45.	KAR_KAR_SHE_1	Shekh Pura Jagir_31016	Shekpura Jagir	Shekpura Jagir Phed (T.W)	29.6555	77.0314	Tube Well	244	Unconfined to Semi-confined / Sand, Silt, Clay.	0.00	107	0.30	WQ	Manual	Atal Jal
46.	HR_GW_396	Sohana_31018	Sohana	Government Primary School, Sohana	29.6589	77.0376	Piezometer	246	Unconfined To Semi-Confined	0.50	77	0.10	Both	Telemetric	Atal Jal
47.	KAR_KAR_SUB_1	Subhri_31019	Subhri	Subhri Phed (T.W)	29.6895	77.0562	Tube Well	243	Unconfined to Semi-confined / Sand, Silt, Clay.	0.62	98	0.10	WQ	Manual	Atal Jal
48.	KAR_KAR_TAP_1	Taprana_31020	Taprana	Taprana Phed (T.W)	29.7423	77.0180	Tube Well	248	Unconfined to Semi-confined / Sand, Silt, Clay.	0.36	98	0.15	WQ	Manual	Atal Jal
49.	GWL-06-067-00514-00031021-001	Tikri_31021	Tikri	Water Supply	29.7386	77.0074	Tube Well	252	Unconfined to Semi-Confined	0.00	107	0.30	WL	Manual	Atal Jal-Private
50.	KAR_KAR_TIK_1	Tikri_31021	Tikri	Tikri Phed (T.W)	29.7385	77.0072	Tube Well	252	Unconfined to Semi-confined / Sand, Silt, Clay.	0.00	91	0.25	WQ	Manual	Atal Jal
51.	HR_GW_398	Uncha Samana_31022	Uncha Samana	Shamshan Ghat, Uncha Samana.	29.6262	77.0070	Piezometer	243	Unconfined To Semi-Confined	0.50	76	0.10	Both	Telemetric	Atal Jal
52.	W293720077023001	Ganjo Garhi_30977	Kairwali	Kairwali	29.6220	77.0420	Tube Well	245	Alluvium	1.00	72	0.15	WQ	Manual	CGWB
53.	W293008077000501	Mohidinpur_30994	Mohidinpur	Mohidinpur	29.6489	77.0772	Tube Well	229	Alluvium	0.60	72	0.15	WQ	Manual	CGWB
54.	San_29.749_76.994	Sangohi_31014	Sangoi	Sangoi	29.7496	76.9947	Tube Well	253	Alluvium	0.00	60	0.30	WQ	Manual	CGWB
55.	W294300077010002	Shekh Pura Jagir_31016	Sekhpura 1(m)	Sekhpura 1(M)-Pz	29.8726	77.0104	Piezometer	259	Unconfined to Semi Confined	0.50	134	0.10	WL	Manual	CGWB
56.	W294700077070001	Chorpur 1(D)	Chorpur 1(D)	Chorpur	29.7833	77.1167	Piezometer	251	Unconfined to Semi Confined	0.50	241	0.10	Both	Manual	CGWB
57.	W294425077061501	Jaroli Khurd	Jaroli Khurd	Jaroli Khurd-Pz	29.7456	77.1042	Piezometer	248	Unconfined to Semi Confined	0.50	90	0.10	WL	Manual	CGWB
58.	W294100076570001	Karnal D	Karnal D	Karnal D	29.6833	76.9500	Piezometer	251	Unconfined to Semi Confined	0.50	263	0.10	Both	Manual	CGWB
59.	W294138077055501	Nalvi Kalan	Nalvi Kalan	Nalvi Kalan-Pz	29.6947	77.0986	Piezometer	249	Unconfined to Semi Confined	0.50	86	0.10	WL	Manual	CGWB
60.	W294626076442903	Amupur Chakda	Amupur Chakda	Amupur Chakda	29.7593	76.7267	Hand Pump	248	Alluvium	1.00	NA	0.15	WQ	Manual	CGWB
61.	W294557076582001	Dadupur Khurd	Dadupur Khurd	Dadupur Khurd	29.7672	77.9725	Tube Well	235	Alluvium	0.60	NA	0.15	WQ	Manual	CGWB
62.	W294400077030003	Newal	Newal	Newal	29.7239	77.0467	Hand Pump	246	Alluvium	1.05	NA	0.10	WQ	Manual	CGWB

AtalBhujalYojana - Block Hydrogeological Report

63.	W293915077015301	Shekhpura	Shekhpura	Shekhpura	29.7170	77.0170	Tube Well	253	Alluvium	0.74	NA	0.15	WQ	Manual	CGWB
64.	An_29.622_77.094	Andhera(Dilawara)_246035	Andhera	Near Veterinary Hospital	29.6228	77.0969	Tube Well	242.5	Unconfined to Semi Confined	0.70	18	0.25	WL	Manual	SGWD
65.	Ch_29.662_77.089	Chundipur_30971	Chundipur	Govt. Middle School.	29.6617	77.0885	Tube Well	242.6	Unconfined to Semi Confined	0.70	50	0.25	WL	Manual	SGWD
66.	Da_29.761_77.001	Darar_30975	Darar	Near Csc Darar	29.7611	77.0014	Tube Well	248.32	Unconfined to Semi Confined	0.70	80	0.25	WL	Manual	SGWD
67.	Ka_29.640_77.105	Dhak Wala_30976	Manglora	In The Village Settlement Near Road	29.6405	77.1056	Tube Well	244	Unconfined to Semi Confined	0.45	80	0.25	WL	Manual	SGWD
68.	Ka_29.706_76.911	Kalampura_30981	Kalampura	In Front Of Goga Mehri.	29.7060	76.9111	Tube Well	250.25	Unconfined to Semi Confined	0.20	100	0.25	WL	Manual	SGWD
69.	Mu_29.646_77.112	Mustafabad_30996	Mustfabad	Govt. Primary School.	29.6462	77.1119	Piezometer	246.75	Unconfined to Semi Confined	0.62	60	0.10	WL	Telemetric	SGWD
70.	Na_29.685_77.095	Nalvi Par_31001	Nalipar	Govt. High School.	29.6850	77.0945	Piezometer	242.45	Unconfined to Semi Confined	0.62	60	0.10	WL	Telemetric	SGWD
71.	Na_29.685_77.114	Nasir Pur_31002	Nasirpur	Govt. Middle School.	29.6858	77.1140	Piezometer	247.25	Unconfined to Semi Confined	0.62	52	0.10	WL	Telemetric	SGWD
72.	Pu_29.72_76.941	Pundrak_31004	Pundrak	Govt Sr. Sec. School	29.7200	76.9407	Piezometer	252.07	Unconfined to Semi Confined	0.62	62	0.10	WL	Telemetric	SGWD
73.	Ra_29.789_76.98	Ramba_31005	Ramba	Govt. High School Near West Yamuna River	29.7890	76.9802	Piezometer	254.5	Unconfined to Semi Confined	0.62	43	0.10	WL	Telemetric	SGWD
74.	Ra_29.643_77.016	Ranwar_31006	Ranwar	Govt. High School.	29.6433	77.0170	Piezometer	243	Unconfined to Semi Confined	0.50	60	0.10	WL	Telemetric	SGWD
75.	Ka_29.731_76.894	Rattan Garh_31009	Kachwa	Veterinary Hospital	29.6816	76.9350	Piezometer	247.65	Unconfined to Semi Confined	0.62	58	0.10	WL	Manual	SGWD
76.	Su_29.693_77.055	Subhri_31019	Subri	Govt. Sr. Sec. School.	29.6933	77.0549	Piezometer	245.25	Unconfined to Semi Confined	0.62	60	0.10	WL	Telemetric	SGWD
77.	Ta_29.741_77.018	Taprana_31020	Taprana	Aagawadi Kendra Taprana	29.7415	77.0180	Piezometer	244.75	Unconfined to Semi Confined	0.62	47	0.10	WL	Telemetric	SGWD
78.	Ra_29.625_76.997	Uncha Samana_31022	Ranwar	Govt. High School.	29.6249	76.9972	Piezometer	245	Unconfined to Semi Confined	0.50	53	0.10	WL	Manual	SGWD
79.	Ka_29.637_76.981	Kambopura	Kambopura	On G.T. Road	29.6368	76.9812	Tube Well	249	Unconfined to Semi Confined	0.90	100	0.15	WL	Manual	SGWD
80.	Uc_29.742_76.975	Uchana	Uchana	On The Entrance Of Village.	29.7416	76.9755	Tube Well	257	Unconfined to Semi Confined	0.74	90	0.15	WL	Manual	SGWD

ANNEXURE: 2  
HISTORICAL WATER LEVEL (WL) DATA OF MONITORING WELLS

State	Haryana	District	Karnal	Block	Karnal
Month of Pre-monsoon Water Level Measurement					May/June
Month of Post-monsoon water Level measurement					October/November

S. No.	Observation Point	Source	Well Types	Co-ordinate		Water Level (m)																			
				Latitude	Longitude	2015		2016		2017		2018		2019		2020		2021		2022		2023		2024	
						Pre	Post	Pre	Post	Pre	Post	Pre	Post	Pre	Post	Pre	Post	Pre	Post	Pre	Post	Pre	Post	Pre	Post
1	Andhera(Dilawara)_246035	Atal Jal	Piezometer	29.6255	77.0938	NA	NA	NA	NA	NA	NA	NA	NA	NA	NA	NA	NA	NA	NA	NA	NA	9.5	12.93	11.1	11.13
2	Bazida Jattan_30963	Atal Jal	Piezometer	29.6339	76.9606	NA	NA	NA	NA	NA	NA	NA	NA	NA	NA	NA	NA	NA	NA	NA	NA	13.6	13.66	14.8	13.77
3	Chhapra Jagir_30968	Atal Jal	Piezometer	29.6856	77.0451	NA	NA	NA	NA	NA	NA	NA	NA	NA	NA	NA	NA	NA	NA	NA	NA	15.82	16.09	17.8	15.2
4	Churni Jagir_30972	Atal Jal	Piezometer	29.8082	77.0237	NA	NA	NA	NA	NA	NA	NA	NA	NA	NA	NA	NA	NA	NA	NA	NA	12.63	11.24	13.47	11.86
5	Dabarki_30973	Atal Jal	Piezometer	29.6826	77.0928	NA	NA	NA	NA	NA	NA	NA	NA	NA	NA	NA	NA	NA	NA	NA	NA	11.77	10.84	14.9	12.45
6	Darar_30975	Atal Jal	Piezometer	29.7603	77.0050	NA	NA	NA	NA	NA	NA	NA	NA	NA	NA	NA	NA	NA	NA	NA	NA	13.07	13.72	16.78	14.18
7	Dhakwala Roran_265061	Atal Jal	Piezometer	29.6465	77.1023	NA	NA	NA	NA	NA	NA	NA	NA	NA	NA	NA	NA	NA	NA	NA	NA	7.5	9.3	12.56	9.3
8	Ganjo Garhi_30977	Atal Jal	Piezometer	29.6288	77.0401	NA	NA	NA	NA	NA	NA	NA	NA	NA	NA	NA	NA	NA	NA	NA	NA	18.2	17.39	19.64	18.1
9	Kalpura_30981	Atal Jal	Piezometer	29.7094	76.9080	NA	NA	NA	NA	NA	NA	NA	NA	NA	NA	NA	NA	NA	NA	NA	NA	19.9	21.79	20.72	22.72
10	Kharkali_30983	Atal Jal	Piezometer	29.6036	76.9723	NA	NA	NA	NA	NA	NA	NA	NA	NA	NA	NA	NA	NA	NA	NA	NA	18.55	18.53	18.76	19.93
11	Mohidinpur_30994	Atal Jal	Piezometer	29.6477	77.0765	NA	NA	NA	NA	NA	NA	NA	NA	NA	NA	NA	NA	NA	NA	NA	NA	14.32	19.28	16.19	15.73
12	Rasulpur Kalan_31007	Atal Jal	Piezometer	29.6792	77.0613	NA	NA	NA	NA	NA	NA	NA	NA	NA	NA	NA	NA	NA	NA	NA	NA	15.02	13.87	16.05	15.5
13	Rattan Garh_31009	Atal Jal	Piezometer	29.6759	76.9355	NA	NA	NA	NA	NA	NA	NA	NA	NA	NA	NA	NA	NA	NA	NA	NA	13.76	14.95	15.25	16.48
14	Rukanpur_246034	Atal Jal	Piezometer	29.7352	76.9484	NA	NA	NA	NA	NA	NA	NA	NA	NA	NA	NA	NA	NA	NA	NA	NA	15.38	16.65	16.12	17.72
15	Salaru_31012	Atal Jal	Piezometer	29.7458	76.9958	NA	NA	NA	NA	NA	NA	NA	NA	NA	NA	NA	NA	NA	NA	NA	NA	16.22	15.62	16.89	16.84
16	Sangoha_31013	Atal Jal	Piezometer	29.7875	77.0363	NA	NA	NA	NA	NA	NA	NA	NA	NA	NA	NA	NA	NA	NA	NA	NA	10.45	8.7	15.57	11.11
17	Sohana_31018	Atal Jal	Piezometer	29.6589	77.0376	NA	NA	NA	NA	NA	NA	NA	NA	NA	NA	NA	NA	NA	NA	NA	NA	18.08	17.6	19.4	18.17
18	Uncha Samana_31022	Atal Jal	Piezometer	29.6262	77.0070	NA	NA	NA	NA	NA	NA	NA	NA	NA	NA	NA	NA	NA	NA	NA	NA	18.33	18.72	19.83	20.58
19	Abdulapur_30962	Atal Jal	Tube Well	29.7507	76.9853	NA	NA	NA	NA	NA	NA	NA	NA	NA	NA	NA	NA	NA	NA	NA	NA	19.42	15.22	13.75	13.29
20	Bhusali_30966	Atal Jal	Tube Well	29.6147	76.9543	NA	NA	NA	NA	NA	NA	NA	NA	NA	NA	NA	NA	NA	NA	NA	NA	15.39	15.72	14.7	18.31
21	Budhanpur_30967	Atal Jal	Tube Well	29.7253	76.9297	NA	NA	NA	NA	NA	NA	NA	NA	NA	NA	NA	NA	NA	NA	NA	NA	19.69	18.88	18.76	19.48
22	Dabarki Par_298003	Atal Jal	Tube Well	29.6606	77.1159	NA	NA	NA	NA	NA	NA	NA	NA	NA	NA	NA	NA	NA	NA	NA	NA	12.34	14.93	13.7	12.5
23	Kachhwa_30980	Atal Jal	Piezometer	29.7320	76.8955	NA	NA	NA	NA	NA	NA	NA	NA	NA	NA	NA	NA	NA	NA	NA	NA	22.08	24.37	23.07	25.22
24	Kurali_30986	Atal Jal	Tube Well	29.7615	76.9911	NA	NA	NA	NA	NA	NA	NA	NA	NA	NA	NA	NA	NA	NA	NA	NA	13.18	12.22	13.32	14.23
25	Mirghan_30992	Atal Jal	Tube Well	29.6411	77.0508	NA	NA	NA	NA	NA	NA	NA	NA	NA	NA	NA	NA	NA	NA	NA	NA	18.04	16.53	15.05	14.01
26	Nagla Megha_30998	Atal Jal	Tube Well	29.6216	77.0654	NA	NA	NA	NA	NA	NA	NA	NA	NA	NA	NA	NA	NA	NA	NA	NA	16.42	16.5	15.85	15.32
27	Rasulpur Khurd_31008	Atal Jal	Tube Well	29.6746	77.0436	NA	NA	NA	NA	NA	NA	NA	NA	NA	NA	NA	NA	NA	NA	NA	NA	16.42	16.24	19.2	17.5
28	Sangohi_31014	Atal Jal	Tube Well	29.7832	77.0334	NA	NA	NA	NA	NA	NA	NA	NA	NA	NA	NA	NA	NA	NA	NA	NA	12.85	11.74	10.36	10.07
29	Sarfa Bad Majra_31015	Atal Jal	Tube Well	29.6906	77.0654	NA	NA	NA	NA	NA	NA	NA	NA	NA	NA	NA	NA	NA	NA	NA	NA	15.41	13.95	13.4	13.78
30	Tikri_31021	Atal Jal	Tube Well	29.7386	77.0074	NA	NA	NA	NA	NA	NA	NA	NA	NA	NA	NA	NA	NA	NA	NA	NA	15.74	16.76	15.33	15.14
31	Shekh Pura Jagir_31016	CGWB	Piezometer	29.8726	77.0104	NA	18.8	26.08	19.59	21.95	NA	19.3	18.47	18.85	NA	NA	NA	24.71	24.68	18.23	NA	NA	17.8	18.38	17.95
32	Chorpur I(D)	CGWB	Piezometer	29.7833	77.1167	NA	8.71	10.62	9.91	10.06	10.26	9.48	9.73	9.8	NA	8.46	8.06	8.78	7.22	NA	8.34	8.88	6.67	8.49	8.05
33	Jaroli Khurd	CGWB	Piezometer	29.7456	77.1042	9.16	8.74	11.07	NA	8	7.15	8.05	6.19	7.65	6.4	6.67	6.57	8.6	5.67	9.15	5.22	NA	NA	6.45	NA
34	Karnal D	CGWB	Piezometer	29.6833	76.9500	23.08	15.11	16.4	16.62	22.34	19.44	24.42	NA	25.5	NA	19.36	NA	21.86	16.59	15.63	14.56	14	13.77	NA	13.48
35	Nalvi Kalan	CGWB	Piezometer	29.6947	77.0986	NA	13.05	13.04	13.1	12.98	12.69	13.6	12.4	16.4	12.68	13.39	11.52	NA	11.05	15.63	14.56	NA	NA	DRY	Dry
36	Andhera(Dilawara)_246035	SGWD	Tube Well	29.6228	77.0969	9.82	9.59	11.48	11.07	12.29	11.31	13.74	11.62	10.95	NA	11.17	9.98	12.25	10.95	12.85	11.05	13.65	12.55	11.28	9.25
37	Chundipur_30971	SGWD	Tube Well	29.6617	77.0885	19.57	18.87	20.78	20.22	21.62	20.7	23.59	20.91	19.29	NA	16.2	17.63	16.2	16.62	17	15.7	16.4	11.9	14.45	12.4
38	Darar_30975	SGWD	Tube Well	29.7611	77.0014	13.89	13.72	15.15	14.57	15.67	15.6	16.78	16.19	18.13	18.13	17.03	17.64	18.7	17.28	19.73	18.03	13.07	13.23	14.1	14.18
39	Dhak Wala_30976	SGWD	Tube Well	29.6405	77.1056	11.36	11.04	12.98	12.24	13.65	13.2	15.23	13.56	12.68	NA	13	11.11	13.35	10.9	13.6	11.65	14.95	11.2	13.05	11.06

S. No.	Observation Point	Source	Well Types	Co-ordinate		Water Level (m)																			
				Latitude	Longitude	2015		2016		2017		2018		2019		2020		2021		2022		2023		2024	
						Pre	Post	Pre	Post	Pre	Post	Pre	Post	Pre	Post	Pre	Post	Pre	Post	Pre	Post	Pre	Post	Pre	Post
40	Kalampura_30981	SGWD	Tube Well	29.7060	76.9111	13.93	17.4	19.44	19.18	20.2	19.5	21.71	20.54	22.43	NA	22.1	23.4	22.25	21.75	22.02	22.95	19.4	21.5	20.93	22.72
41	Mustafabad_30996	SGWD	Piezometer	29.6462	77.1119	8.74	8.27	10.01	9.75	10.7	10.51	11.7	10.83	8.95	NA	9.33	7.1	9.15	5.6	8.2	5.45	6.6	6.62	7.56	7.32
42	Nalvi Par_31001	SGWD	Piezometer	29.6850	77.0945	13.89	13.77	15.82	15.95	16.49	15.8	17.89	15.98	14.79	NA	13.55	12.8	14.6	12.85	14.5	11.78	15.85	11.25	11.95	12.45
43	Nasir Pur_31002	SGWD	Piezometer	29.6858	77.1140	11.13	10.38	13.06	13.04	13.69	12.87	15.2	14.52	12.55	NA	9.75	10.65	10.55	9.5	9.15	8.83	8.79	9.22	9.95	10.5
44	Pundrak_31004	SGWD	Piezometer	29.7200	76.9407	15.96	15.07	17.18	16.35	17.25	16.6	18.9	18.58	22.1	NA	23.45	22.73	23.95	23.1	23	20.48	14.85	20.05	15.15	19.04
45	Ramba_31005	SGWD	Piezometer	29.7890	76.9802	8.57	7.11	9.37	9.47	10.01	9.4	11.5	10.42	12.7	NA	14.75	13.1	13.95	9.05	8.35	7.11	8.2	6.26	8.01	7.1
46	Ranwar_31006	SGWD	Piezometer	29.6433	77.0170	19.85	19.67	21.83	21.32	22.35	21.8	23.14	22.49	NA	20.41	16.85	18.7	16.9	16.55	16.4	19.58	19.75	19.35	19.25	19.9
47	Rattan Garh_31009	SGWD	Piezometer	29.6816	76.9350	19.37	18.53	21.33	21.27	22.01	21.05	23.48	21.17	22.1	NA	22.14	23.28	22.3	22.05	21.8	23.6	23.05	24.45	22.61	25.22
48	Subhri_31019	SGWD	Piezometer	29.6933	77.0549	19.04	18.74	20.55	20.07	21.24	20.62	22.65	20.76	21.74	NA	20.42	19.15	21.19	17.7	18.2	16.88	17.25	20.75	18.45	18.5
49	Taprana_31020	SGWD	Piezometer	29.7415	77.0180	NA	NA	NA	NA	NA	NA	NA	NA	20.5	NA	21.4	NA	21.5	18.72	19.1	15.02	15.6	14.8	16.06	16.15
50	Uncha Samana_31022	SGWD	Piezometer	29.6249	76.9972	19.85	19.67	21.83	21.32	22.35	21.8	23.14	22.49	20.41	NA	17.25	19.17	16.5	16.55	16.4	19.58	19.75	19.35	19.25	19.35
51	Kambopura	SGWD	Tube Well	29.6368	76.9812	18.07	17.48	19.97	19.35	20.47	20.75	22	20.87	22.97	NA	19.55	20.28	21.11	19.7	19.15	19.55	19.55	18.75	19.2	19.05
52	Uchana	SGWD	Tube Well	29.7416	76.9755	14.01	13.44	15.47	14.93	16.03	15.75	17.6	17	19.8	NA	18.95	19.9	20.1	20.04	20.2	20.1	20.05	20.53	20.65	21.06



ANNEXURE: 3  
HISTORICAL WATER QUALITY (WQ) DATA OF MONITORING WELLS

State	Haryana				District	Karnal									Block	Karnal				
Month of Collection of samples for WQ monitoring*														May/June						
Gram Panchayat	Source	Type of well	Latitude	Longitude	Year	pH	EC	TDS	TH	Ca	Mg	Na	K	CO <sub>3</sub>	HCO <sub>3</sub>	SO <sub>4</sub>	Cl	F	NO <sub>3</sub>	
Abdulapur_30962	Atal Jal	Tubewell	29.7503	76.9855	2024	7.77	879	530.3	244.6	60.28	22.85	55	6	1.218	218.8	77.26	104.5	0.66	13.9	
Amupur Chakda	CGWB	Hand Pump	29.7593	76.7267	2015	8.6	859	ND	173.5	12.3	34.7	120.0	7.3	93.6	273.7	10.0	31.3	0.66	2.40	
Amupur Chakda	CGWB	Hand Pump	29.7593	76.7267	2016	8.8	825	ND	59.0	12.0	7.2	175.0	11.0	59.0	234.0	125.0	7.1	4.35	9.63	
Amupur Chakda	CGWB	Hand Pump	29.7593	76.7267	2017	Sample not collected from this location														
Amupur Chakda	CGWB	Hand Pump	29.7593	76.7267	2018	8.24	715	ND	170.0	16.0	32.0	112.0	7.6	0.0	366.0	72.0	28.0	0.05	9.00	
Amupur Chakda	CGWB	Hand Pump	29.7593	76.7267	2019	8.08	1342	ND	100.0	32.0	5.0	306.0	1.0	0.0	122.0	72.0	397.0	0.45	18.00	
Amupur Chakda	CGWB	Hand Pump	29.7593	76.7267	2020	8.2	935	ND	210.0	24.0	36.0	148.0	12.0	0.0	500.0	45.0	43.0	0.71	11.00	
Amupur Chakda	CGWB	Hand Pump	29.7593	76.7267	2021	8.1	2705	ND	942.5	136.1	146.5	202.0	12.0	0.0	181.7	729.0	306.6	0.27	17.00	
Amupur Chakda	CGWB	Hand Pump	29.7593	76.7267	2022	8.01	2380	ND	840.0	112.0	136.2	176.0	7.4	0.0	174.0	638.0	276.0	0.24	14.00	
Amupur Chakda	CGWB	Hand Pump	29.7593	76.7267	2023	7.51	2650	ND	910.0	184.0	109.4	178.0	16.0	0.0	439.2	384.0	347.9	0.48	26.00	
Amupur Chakda	CGWB	Hand Pump	29.7593	76.7267	2024	7.42	3391	0	940.8	180.4	119.2	270	14	Nil	390.5	355.4	297.8	0.44	480	
Andhera(Dilawara)_246035	Atal Jal	Piezometer	29.6255	77.0938	2023	7.57	593	391.4	202.3	61.13	12	44.2	14	0.0	178.0	32	109	0.65	28.1	
Andhera(Dilawara)_246035	Atal Jal	Piezometer	29.6255	77.0938	2024	7.23	555	324	150.5	37.67	13.71	33	4	0.2	134.8	47.15	64.6	0.4	8.65	
Bazida Jattan_30963	Atal Jal	Piezometer	29.6339	76.9606	2023	7.58	591	336.9	172.7	53.24	9.64	38	12.1	0.0	148.0	27.5	92.6	0.34	24.2	
Bazida Jattan_30963	Atal Jal	Piezometer	29.6339	76.9606	2024	7.21	562	338	150.5	37.67	13.71	35	4	0.2	139.8	49.19	66.5	0.42	9	
Bhusali_30966	Atal Jal	Tubewell	29.6146	76.9541	2024	6.82	626	397.2	178.7	45.21	15.99	41	4	0.102	164.9	57.9	77.9	0.5	10.5	
Budhanpur_30967	Atal Jal	Tubewell	29.7299	76.9386	2024	6.57	826	493.6	225.8	56.51	20.56	51	6	0.072	204.9	71.88	96.91	0.61	13	
Chhapra Jagir_30968	Atal Jal	Piezometer	29.6856	77.0451	2023	7.57	1279	741.8	384.8	118.3	21.7	83.8	26.7	0.0	339.0	60.8	206	1.33	53.3	
Chhapra Jagir_30968	Atal Jal	Piezometer	29.6856	77.0451	2024	6.99	1156	727	329.3	82.88	29.7	75	8	0.3	299.7	105.9	144.4	0.9	18.95	
Chorpur	CGWB	Hand Pump	29.7833	77.1167	2015	8.75	908	ND	163.3	8.2	34.7	137.0	6.0	35.1	142.8	235.0	27.8	0.27	BDL	
Chorpur	CGWB	Hand Pump	29.7833	77.1167	2016	8.5	500	ND	143.0	37.0	12.0	65.0	4.2	37.0	149.0	82.0	10.0	0.33	0.81	
Chorpur	CGWB	Hand Pump	29.7833	77.1167	2017	8.5	1080	ND	190.0	28.0	29.0	175.0	6.3	38.0	192.0	288.0	28.0	0.35	13.00	
Chorpur	CGWB	Hand Pump	29.7833	77.1167	2018	8.48	635	ND	130.0	20.0	20.0	68.0	4.5	48.0	110.0	90.0	14.0	0.29	2.00	
Chorpur	CGWB	Hand Pump	29.7833	77.1167	2019	8.4	340	ND	80.0	16.0	10.0	76.2	1.2	36.0	109.0	BDL	64.0	0.63	3.01	
Chorpur	CGWB	Hand Pump	29.7833	77.1167	2020	8.38	672	ND	170.0	24.0	27.0	85.0	6.2	36.0	110.0	167.0	21.0	0.01	0.15	
Chorpur	CGWB	Hand Pump	29.7833	77.1167	2021	8.48	318	ND	94.6	16.8	12.8	33.0	1.4	24.0	134.2	0.0	14.2	0.11	0.00	
Chorpur	CGWB	Hand Pump	29.7833	77.1167	2022	8.52	345	ND	98.0	16.0	14.1	32.0	2.4	24.0	129.0	0.0	21.0	0.09	0.10	
Chorpur	CGWB	Hand Pump	29.7833	77.1167	2023	8.42	500	ND	120.0	24.0	14.6	70.0	2.7	24.0	219.6	0.0	35.5	0.90	0.38	
Chorpur	CGWB	Hand Pump	29.7833	77.1167	2024	8.41	360	0	50.04	8.016	7.296	55	2	12	134.2	24.02	7.09	0.5	BDL	
Chundipur_30971	Atal Jal	Tubewell	29.663	77.0872	2024	6.95	997	605.8	282.2	71.58	25.13	62	7	0.209	249.8	88.23	119.7	0.76	15.85	
Churni Jagir_30972	Atal Jal	Piezometer	29.8082	77.0237	2023	7.55	661	376.8	192.4	59.16	10.8	42.5	13.5	0.0	166.0	30.8	104	0.23	27.1	
Churni Jagir_30972	Atal Jal	Piezometer	29.8082	77.0237	2024	6.73	596	340	159.9	37.67	16	35	4	0.1	139.9	49.52	66.5	0.42	9.05	
Dabarki Par_298003	Atal Jal	Tubewell	29.662	77.1086	2024	7.3	938	524.6	244.6	60.28	22.85	54	6	0.403	214.6	76.4	102.6	0.65	13.8	
Dabarki_30973	Atal Jal	Piezometer	29.6826	77.0928	2023	7.99	760	486.4	251.6	76.9	14.4	54.9	17.5	0.0	220.0	39.8	135	0.68	35	
Dabarki_30973	Atal Jal	Piezometer	29.6826	77.0928	2024	7.71	735	460	207	52.74	18.28	47	5	0.9	189.1	67.04	91.21	0.57	12.15	
Dadupur Khurd	CGWB	Tube Well	29.7672	77.9725	2015	Sample not collected from this location														
Dadupur Khurd	CGWB	Tube Well	29.7672	77.9725	2016	8.4	447	ND	157.0	43.0	12.0	39.0	5.7	23.0	192.0	25.0	14.0	0.69	2.12	
Dadupur Khurd	CGWB	Tube Well	29.7672	77.9725	2017	8.1	460	ND	170.0	40.0	17.0	41.0	4.8	0.0	231.0	50.0	14.0	0.73	2.22	
Dadupur Khurd	CGWB	Tube Well	29.7672	77.9725	2018	8.2	465	ND	130.0	12.0	24.0	46.0	6.1	0.0	220.0	7.0	35.0	0.05	0.20	
Dadupur Khurd	CGWB	Tube Well	29.7672	77.9725	2019	Sample not collected from this location														
Dadupur Khurd	CGWB	Tube Well	29.7672	77.9725	2020	8.51	538	ND	170.0	16.0	32.0	61.0	8.4	60.0	195.0	0.0	43.0	0.10	0.71	

AtalBhujalYojana - Block Hydrogeological Report

Gram Panchayat	Source	Type of well	Latitude	Longitude	Year	pH	EC	TDS	TH	Ca	Mg	Na	K	CO <sub>3</sub>	HCO <sub>3</sub>	SO <sub>4</sub>	Cl	F	NO <sub>3</sub>
Dadupur Khurd	CGWB	Tube Well	29.7672	77.9725	2021	8.65	838	ND	262.7	25.3	48.5	76.0	1.4	36.0	207.5	35.0	70.9	0.51	60.00
Dadupur Khurd	CGWB	Tube Well	29.7672	77.9725	2022	8.42	490	ND	172.0	20.0	29.7	39.0	1.0	32.0	162.0	0.0	35.0	0.37	38.00
Dadupur Khurd	CGWB	Tube Well	29.7672	77.9725	2023	Sample not collected from this location													
Dadupur Khurd	CGWB	Tube Well	29.7672	77.9725	2024	7.84	659	0	200.2	36.07	26.75	58	6	Nil	353.9	BDL	21.27	0.54	BDL
Darar_30975	Atal Jal	Piezometer	29.7603	77.005	2023	7.99	821	541.9	281.2	84.79	16.8	61.2	19.5	0.0	243.0	44.3	149	0.34	39
Darar_30975	Atal Jal	Piezometer	29.7603	77.005	2024	7.79	754	457	207	52.74	18.28	47	5	1.1	188.9	66.61	89.31	0.57	12.05
Dhak Wala_30976	Atal Jal	Tubewell	29.6399	77.1013	2024	7.5	523	309.9	141.1	37.67	11.42	32	3	0.386	129.6	45.11	60.8	0.39	8.3
Dhakwala Roran_265061	Atal Jal	Pizeometer	29.6465	77.1023	2024	7.23	797	446	207	52.74	18.28	46	5	0.295	184.7	65	87.41	0.55	11.75
Ganjo Garhi_30977	CGWB	Tube Well	29.622	77.042	2015	8.45	934	ND	336.9	45.0	54.6	65.0	7.4	29.3	89.2	170.0	118.1	0.65	21.00
Ganjo Garhi_30977	CGWB	Tube Well	29.622	77.042	2016	8.25	1063	ND	439.0	86.0	55.0	65.0	7.5	0.0	224.0	214.0	118.0	0.66	11.00
Ganjo Garhi_30977	CGWB	Tube Well	29.622	77.042	2017	8.46	776	ND	278.0	62.0	30.0	58.0	8.0	38.0	243.0	35.0	62.0	0.43	27.00
Ganjo Garhi_30977	CGWB	Tube Well	29.622	77.042	2018	8.63	600	ND	120.0	16.0	20.0	79.0	3.4	48.0	183.0	41.0	14.0	0.82	1.00
Ganjo Garhi_30977	CGWB	Tube Well	29.622	77.042	2019	8.71	467	ND	100.0	24.0	9.7	76.2	1.0	24.0	232.0	2.9	21.0	0.11	0.20
Ganjo Garhi_30977	CGWB	Tube Well	29.622	77.042	2020	8.52	485	ND	140.1	20.0	21.9	71.0	3.4	48.0	207.5	20.0	14.2	0.11	0.88
Ganjo Garhi_30977	CGWB	Tube Well	29.622	77.042	2021	8.7	467	ND	168.1	16.8	30.6	39.0	0.5	36.0	219.7	0.0	14.2	0.14	0.22
Ganjo Garhi_30977	CGWB	Tube Well	29.622	77.042	2022	8.21	565	ND	188.0	19.0	34.2	40.0	0.8	0.0	254.0	14.0	35.0	0.18	1.20
Ganjo Garhi_30977	CGWB	Tube Well	29.622	77.042	2023	7.94	456	ND	200.0	20.0	36.5	26.0	4.4	0.0	183.0	0.0	71.0	1.60	0.26
Ganjo Garhi_30977	CGWB	Tube Well	29.622	77.042	2024	8.24	615	0	150.1	20.04	24.32	64	3	Nil	305.1	BDL	21.27	0.92	BDL
Ganjo Garhi_30977	Atal Jal	Piezometer	29.6288	77.0401	2023	7.57	1253	801.9	414.5	128.1	22.9	90.6	28.8	0.0	362.0	65.6	223	1.12	57.7
Ganjo Garhi_30977	Atal Jal	Piezometer	29.6288	77.0401	2024	6.98	1194	669	310.5	79.11	27.42	69	7	0.2	274.7	97.47	131.1	0.83	17.45
Kachhwa_30980	Atal Jal	Tubewell	29.7261	76.8904	2024	7.1	1296	773.8	357.5	90.42	31.98	80	9	0.379	319.6	112.7	152	0.96	20.1
Kalampura_30981	Atal Jal	Piezometer	29.7094	76.908	2023	7.96	812	471	241.8	74.93	13.2	53.2	16.9	0.0	214.0	38.6	130	0.54	33.9
Kalampura_30981	Atal Jal	Piezometer	29.7094	76.908	2024	7.83	752	462	216.4	52.74	20.56	48	5	1.2	188.8	67.26	91.21	0.57	12.2
Karnal	CGWB	Tube Well	29.7	77	2015	Sample not collected from this location													
Karnal	CGWB	Tube Well	29.7	77	2016	8.39	500	ND	186.0	20.0	33.0	38.0	8.5	35.0	179.0	42.0	14.0	0.67	5.37
Karnal	CGWB	Tube Well	29.7	77	2017	8.27	580	ND	206.0	41.0	25.0	59.0	5.2	0.0	299.0	55.0	21.0	0.43	2.32
Karnal	CGWB	Tube Well	29.7	77	2018	8.22	720	ND	220.0	20.0	41.0	80.0	7.2	0.0	305.0	97.0	28.0	0.82	11.00
Karnal	CGWB	Tube Well	29.7	77	2019	8.66	540	ND	200.0	56.0	15.0	63.2	4.8	60.0	183.0	32.0	35.0	0.64	5.40
Karnal	CGWB	Tube Well	29.7	77	2020	8.51	591	ND	180.0	16.0	34.0	49.0	6.9	36.0	232.0	0.0	21.0	5.50	0.68
Karnal	CGWB	Tube Well	29.7	77	2021	8.72	579	ND	231.2	21.0	43.4	32.0	5.4	48.0	219.7	0.0	21.3	0.54	5.80
Karnal	CGWB	Tube Well	29.7	77	2022	8.51	617	ND	245.0	22.0	46.2	30.0	4.1	48.0	237.0	0.0	21.0	0.47	2.70
Karnal	CGWB	Tube Well	29.7	77	2023	7.99	830	ND	260.0	40.0	38.9	96.2	7.6	0.0	463.6	0.0	56.8	1.20	9.07
Karnal	CGWB	Tube Well	29.7	77	2024	8.4	627	0	180.1	20.04	31.62	52	6	24	244.1	24.02	14.18	0.94	3.6
Kharkali_30983	Atal Jal	Piezometer	29.6036	76.9723	2023	8.08	687	425.9	217.1	67.04	12	48.1	15.3	0.0	190.0	34.8	118	1.01	30.6
Kharkali_30983	Atal Jal	Piezometer	29.6036	76.9723	2024	7.29	655	400	188.2	45.21	18.28	41	4	0.3	164.7	58.23	79.81	0.5	10.6
Kurali_30986	Atal Jal	Tubewell	29.7614	76.9912	2024	6.73	840	516.7	235.2	60.28	20.56	53	6	0.109	214.9	75.22	102.6	0.65	13.6
Mirghan_30992	Atal Jal	Tubewell	29.6411	77.0507	2024	6.92	673	426.7	197.6	48.98	18.28	44	5	0.137	174.9	62.2	83.61	0.53	11.3
Mohidinpur_30994	CGWB	Tube Well	29.6489	77.0772	2015	Sample not collected from this location													
Mohidinpur_30994	CGWB	Tube Well	29.6489	77.0772	2016	8.7	475	ND	59.0	24.0	ND	94.0	1.6	47.0	156.0	41.0	7.1	0.79	BDL
Mohidinpur_30994	CGWB	Tube Well	29.6489	77.0772	2017	8.65	560	ND	114.0	29.0	10.0	95.0	1.9	59.0	179.0	58.0	7.1	0.89	BDL
Mohidinpur_30994	CGWB	Tube Well	29.6489	77.0772	2018	8.22	550	ND	70.0	12.0	10.0	105.0	2.7	0.0	232.0	74.0	21.0	0.82	2.00
Mohidinpur_30994	CGWB	Tube Well	29.6489	77.0772	2019	8.53	481	ND	90.0	20.0	9.7	81.7	1.0	24.0	220.0	23.0	14.0	0.78	0.20
Mohidinpur_30994	CGWB	Tube Well	29.6489	77.0772	2020	8.42	591	ND	230.0	12.0	48.0	51.0	5.3	36.0	171.0	105.0	14.0	0.22	9.30
Mohidinpur_30994	CGWB	Tube Well	29.6489	77.0772	2021	8.64	701	ND	189.2	21.0	33.2	76.0	7.4	36.0	170.9	87.0	49.6	0.27	19.00
Mohidinpur_30994	CGWB	Tube Well	29.6489	77.0772	2022	8.6	618	ND	198.0	20.0	36.0	66.0	6.8	42.0	174.0	14.0	71.0	0.24	15.00
Mohidinpur_30994	CGWB	Tube Well	29.6489	77.0772	2023	7.96	530	ND	240.0	48.0	29.2	25.0	4.8	0.0	268.4	0.0	49.7	1.50	0.19

AtalBhujalYojana - Block Hydrogeological Report

Gram Panchayat	Source	Type of well	Latitude	Longitude	Year	pH	EC	TDS	TH	Ca	Mg	Na	K	CO <sub>3</sub>	HCO <sub>3</sub>	SO <sub>4</sub>	Cl	F	NO <sub>3</sub>
Mohidinpur_30994	CGWB	Tube Well	29.6489	77.0772	2024	8.38	568	0	60.05	12.02	7.296	100	2	24	195.3	48.03	14.18	0.73	BDL
Mohidinpur_30994	Atal Jal	Piezometer	29.6477	77.0765	2023	7.67	816	530.4	271.4	84.79	14.4	59.9	19	0.0	238.0	43.4	147	0.87	38.1
Mohidinpur_30994	Atal Jal	Piezometer	29.6477	77.0765	2024	7.22	794	477	216.4	56.51	18.28	49	5	0.3	194.7	69.52	95.01	0.59	12.55
Mustafabad_30996	Atal Jal	Tubewell	29.6465	77.1115	2024	6.9	585	344.6	159.9	41.44	13.71	36	4	0.105	139.9	50.16	68.4	0.42	9.2
Nagla Megha_30998	Atal Jal	Tubewell	29.6216	77.0654	2024	7.08	729	439.2	197.6	52.74	16	45	5	0.203	179.8	63.92	87.41	0.54	11.6
Nalvi Par_31001	Atal Jal	Tubewell	29.6816	77.0966	2024	7.5	928	547.1	254	64.04	22.85	56	6	0.669	224.3	79.73	108.3	0.68	14.35
Nasir Pur_31002	Atal Jal	Tubewell	29.6866	77.1155	2024	6.97	895	519.2	235.2	60.28	20.56	54	6	0.189	214.8	75.65	102.6	0.65	13.65
Newal	CGWB	Hand Pump	29.7239	77.0467	2015	8.8	355	ND	51.0	20.4	ND	63.0	2.1	35.1	107.1	20.0	13.9	0.48	BDL
Newal	CGWB	Hand Pump	29.7239	77.0467	2016	8.4	562	ND	184.0	41.0	30.0	56.0	4.4	37.0	199.0	40.0	28.0	0.27	0.36
Newal	CGWB	Hand Pump	29.7239	77.0467	2017	8.32	432	ND	227.0	66.0	15.0	6.2	2.8	25.0	192.0	28.0	7.1	0.53	0.50
Newal	CGWB	Hand Pump	29.7239	77.0467	2018	8.48	440	ND	200.0	20.0	37.0	6.0	4.0	24.0	134.0	44.0	14.0	0.18	2.00
Newal	CGWB	Hand Pump	29.7239	77.0467	2019	8.58	629	ND	160.0	24.0	24.0	99.2	2.0	60.0	183.0	22.0	71.0	0.51	0.38
Newal	CGWB	Hand Pump	29.7239	77.0467	2020	Sample not collected from this location													
Newal	CGWB	Hand Pump	29.7239	77.0467	2021	8.58	365	ND	189.2	21.0	33.2	5.0	0.7	24.0	158.7	0.0	14.2	0.15	1.20
Newal	CGWB	Hand Pump	29.7239	77.0467	2022	8.17	686	ND	269.0	25.0	50.2	32.0	3.9	0.0	210.0	98.0	41.0	0.21	2.10
Newal	CGWB	Hand Pump	29.7239	77.0467	2023	8.06	1301	ND	360.0	64.0	48.6	135.0	7.3	0.0	573.4	0.0	106.5	0.68	26.77
Newal	CGWB	Hand Pump	29.7239	77.0467	2024	8.14	798	0	220.2	28.06	36.48	67	4	Nil	329.5	52.83	21.27	0.59	0.71
Pundrak_31004	Atal Jal	Tubewell	29.7213	76.942	2024	6.85	1486	949.9	432.8	109.3	38.84	98	11	0.26	389.7	141.2	188.1	1.18	24.6
Ramba_31005	Atal Jal	Tubewell	29.799	76.9867	2024	7.03	668	394.8	178.7	45.21	15.99	41	4	0.166	164.8	57.47	77.9	0.49	10.45
Ranwar_31006	Atal Jal	Tubewell	29.6457	77.0217	2024	7.14	1131	725.5	329.3	82.88	29.7	75	8	0.389	299.6	105.7	142.5	0.9	18.9
Rasulpur Kalan_31007	Atal Jal	Piezometer	29.6792	77.0613	2023	8.25	769	476.8	246.7	74.93	14.4	53.8	17.1	0.0	214.0	39	133	0.66	34.3
Rasulpur Kalan_31007	Atal Jal	Piezometer	29.6792	77.0613	2024	7.91	751	439	197.6	52.74	16	45	5	1.4	178.6	63.92	87.41	0.54	11.6
Rasulpur Khurd_31008	Atal Jal	Tubewell	29.6746	77.0434	2024	7.31	924	569.2	263.4	67.81	22.85	59	6	0.451	234.5	82.96	112.1	0.71	14.9
Rattan Garh_31009	Atal Jal	Pizeometer	29.6759	76.9355	2024	7.45	774	432	197.6	48.98	18.28	45	5	0.477	179.5	62.96	85.51	0.54	11.4
Rukanpur_246034	Atal Jal	Piezometer	29.7352	76.9484	2023	7.9	503	296.8	153	47.32	8.44	33.5	10.6	0.0	130.0	24.2	80.7	0.43	21.3
Rukanpur_246034	Atal Jal	Piezometer	29.7352	76.9484	2024	7.24	488	310	141.1	37.67	11.42	32	3	0.2	129.8	45.11	60.8	0.39	8.3
Salaru_31012	Atal Jal	Piezometer	29.7458	76.9958	2023	7.48	681	388	221.6	67.98	12.6	34.16	11.65	0.0	164.3	30.99	110.2	0.49	23.26
Salaru_31012	Atal Jal	Piezometer	29.7458	76.9958	2024	7.25	619	395	178.7	45.21	15.99	41	4	0.3	164.7	57.58	77.9	0.49	10.45
Sangoha_31013	Atal Jal	Piezometer	29.7875	77.0363	2023	7.69	724	427.2	222	67.04	13.2	48.2	15.3	0.0	190.0	34.9	118	0.97	30.7
Sangoha_31013	Atal Jal	Piezometer	29.7875	77.0363	2024	7.11	662	423	197.6	48.98	18.28	44	5	0.2	174.8	61.56	83.61	0.53	11.2
Sangohi_31014	CGWB	Tube Well	29.7496	76.9947	2015	Sample not collected from this location													
Sangohi_31014	CGWB	Tube Well	29.7496	76.9947	2016	8.12	282	ND	137.0	43.0	7.0	5.4	3.3	0.0	143.0	15.0	10.0	0.35	2.14
Sangohi_31014	CGWB	Tube Well	29.7496	76.9947	2017	8.2	438	ND	144.0	37.0	13.0	51.0	4.2	0.0	269.0	15.0	14.0	0.45	0.51
Sangohi_31014	CGWB	Tube Well	29.7496	76.9947	2018	8.38	335	ND	140.0	40.0	10.0	5.2	4.1	24.0	73.0	23.0	21.0	0.05	3.00
Sangohi_31014	CGWB	Tube Well	29.7496	76.9947	2019	Sample not collected from this location													
Sangohi_31014	CGWB	Tube Well	29.7496	76.9947	2020	Sample not collected from this location													
Sangohi_31014	CGWB	Tube Well	29.7496	76.9947	2021	8.75	429	ND	136.6	25.3	17.9	38.0	0.7	24.0	170.9	0.0	21.3	0.41	9.70
Sangohi_31014	CGWB	Tube Well	29.7496	76.9947	2022	8.16	513	ND	149.0	24.0	21.6	47.0	0.9	0.0	187.0	0.0	71.0	0.32	5.40
Sangohi_31014	CGWB	Tube Well	29.7496	76.9947	2023	8.5	600	ND	190.0	24.0	31.6	55.0	6.2	36.0	244.0	0.0	42.6	1.50	3.74
Sangohi_31014	CGWB	Tube Well	29.7496	76.9947	2024	7.97	338	0	140.1	28.06	17.02	8	3	Nil	158.7	12.01	7.09	0.76	0.72
Sarfa Bad Majra_31015	Atal Jal	Tubewell	29.6911	77.0654	2024	6.92	1162	727.2	329.3	82.88	29.7	75	8	0.235	299.8	106	144.4	0.9	18.95
Shekh Pura Jagir_31016	Atal Jal	Tubewell	29.6555	77.0314	2024	6.39	1071	642	291.6	75.35	25.13	66	7	0.061	264.9	93.49	127.3	0.79	16.75
Shekhpura	CGWB	Tube Well	29.717	77.017	2015	8.9	540	ND	194.0	32.7	27.3	41.0	4.9	46.8	130.9	65.0	13.9	0.32	14.00
Shekhpura	CGWB	Tube Well	29.717	77.017	2016	8.3	620	ND	245.0	20.0	77.0	47.0	6.2	25.0	212.0	110.0	14.0	0.29	2.18
Shekhpura	CGWB	Tube Well	29.717	77.017	2017	8.25	646	ND	268.0	50.0	35.0	45.0	4.9	0.0	275.0	123.0	7.1	0.42	0.92
Shekhpura	CGWB	Tube Well	29.717	77.017	2018	8.47	655	ND	70.0	12.0	10.0	57.0	7.0	48.0	110.0	7.0	14.0	0.22	5.00

AtalBhujalYojana - Block Hydrogeological Report

Gram Panchayat	Source	Type of well	Latitude	Longitude	Year	pH	EC	TDS	TH	Ca	Mg	Na	K	CO <sub>3</sub>	HCO <sub>3</sub>	SO <sub>4</sub>	Cl	F	NO <sub>3</sub>
Shekhpura	CGWB	Tube Well	29.717	77.017	2019	8.4	504	ND	160.0	40.0	15.0	57.3	1.9	48.0	98.0	11.0	78.0	0.59	1.98
Shekhpura	CGWB	Tube Well	29.717	77.017	2020	8.17	631	ND	240.0	28.0	41.0	51.0	6.9	0.0	256.0	78.0	21.0	0.26	9.30
Shekhpura	CGWB	Tube Well	29.717	77.017	2021	Sample not collected from this location													
Shekhpura	CGWB	Tube Well	29.717	77.017	2022	8.02	665	ND	174.0	18.0	31.4	72.0	6.8	0.0	221.0	88.0	41.0	0.39	4.10
Shekhpura	CGWB	Tube Well	29.717	77.017	2023	7.68	650	ND	205.0	36.0	28.0	50.0	4.0	0.0	280.6	24.0	42.6	0.52	0.47
Shekhpura	CGWB	Tube Well	29.717	77.017	2024	8.4	665	0	220.2	36.07	31.62	43	4	36	244.1	24.02	14.18	0.63	BDL
Sohana_31018	Atal Jal	Piezometer	29.6589	77.0376	2023	7.84	527	321.5	162.8	51.27	8.44	36.3	11.5	0.0	142.0	26.3	87.8	0.34	23.1
Sohana_31018	Atal Jal	Piezometer	29.6589	77.0376	2024	7.51	503	299	141.1	33.91	13.7	31	3	0.4	124.6	43.6	58.9	0.37	8
Subhri_31019	Atal Jal	Tubewell	29.6895	77.0562	2024	6.63	1270	765.3	348.1	90.42	29.7	79	9	0.126	314.9	111.5	150.1	0.95	19.9
Taprana_31020	Atal Jal	Tubewell	29.7423	77.018	2024	6.73	1033	590.4	272.8	67.81	25.13	61	7	0.124	244.9	85.97	115.9	0.73	15.45
Tikri_31021	Atal Jal	Tubewell	29.7385	77.0072	2024	6.43	1004	650.3	301	75.35	27.41	67	7	0.068	269.9	94.68	129.2	0.81	16.95
Uncha Samana_31022	Atal Jal	Piezometer	29.6262	77.007	2023	8.02	671	395.9	202.3	63.1	10.8	44.7	14.2	0.0	178.0	32.4	109	0.65	28.5
Uncha Samana_31022	Atal Jal	Piezometer	29.6262	77.007	2024	7.9	655	425	197.6	48.98	18.28	44	5	1.3	173.7	61.88	83.61	0.53	11.25

Name of District	Name of Block	Source	Name of village/ OW data	Latitude	Longitude	EC June 2020	EC June-2021	EC June-2022	EC June-2023	EC June-2024
Karnal_67	Karnal_514	Atal Jal	Abdulapur_30962	29.7503	76.9855	ND	ND	ND	ND	879
Karnal_67	Karnal_514	SGWB	Andhera	29.6224	77.0943	545	550	600	500	600
Karnal_67	Karnal_514	Atal Jal	Andhera(Dilawara)_246035	29.6255	77.0938	ND	ND	ND	593	555
Karnal_67	Karnal_514	Atal Jal	Bazida Jattan_30963	29.6339	76.9606	ND	ND	ND	591	562
Karnal_67	Karnal_514	Atal Jal	Bhusali_30966	29.6146	76.9541	ND	ND	ND	ND	626
Karnal_67	Karnal_514	Atal Jal	Budhanpur_30967	29.7299	76.9386	ND	ND	ND	ND	826
Karnal_67	Karnal_514	Atal Jal	Chhapra Jagir_30968	29.6856	77.0451	ND	ND	ND	1279	1156
Karnal_67	Karnal_514	SGWB	Chundipur	29.6617	77.0885	750	750	700	750	650
Karnal_67	Karnal_514	Atal Jal	Chundipur_30971	29.663	77.0872	ND	ND	ND	ND	997
Karnal_67	Karnal_514	Atal Jal	Churni Jagir_30972	29.8082	77.0237	ND	ND	ND	661	596
Karnal_67	Karnal_514	Atal Jal	Dabarki Par_298003	29.662	77.1086	ND	ND	ND	ND	938
Karnal_67	Karnal_514	Atal Jal	Dabarki_30973	29.6826	77.0928	ND	ND	ND	760	735
Karnal_67	Karnal_514	SGWB	Darar	29.7611	77.0014	980	900	900	900	850
Karnal_67	Karnal_514	Atal Jal	Darar_30975	29.7603	77.005	ND	ND	ND	821	754
Karnal_67	Karnal_514	Atal Jal	Dhak Wala_30976	29.6399	77.1013	ND	ND	ND	ND	523
Karnal_67	Karnal_514	Atal Jal	Dhakhwala Roran_265061	29.6465	77.1023	ND	ND	ND	ND	797
Karnal_67	Karnal_514	Atal Jal	Ganjo Garhi_30977	29.6288	77.0401	ND	ND	ND	1253	1194
Karnal_67	Karnal_514	Atal Jal	Kachhwa_30980	29.7261	76.8904	ND	ND	ND	ND	1296
Karnal_67	Karnal_514	SGWB	Kachwa	29.7312	76.8941	700	700	700	650	750
Karnal_67	Karnal_514	SGWB	Kalampura	29.706	76.9111	780	750	750	750	700
Karnal_67	Karnal_514	Atal Jal	Kalampura_30981	29.7094	76.908	ND	ND	ND	812	752
Karnal_67	Karnal_514	SGWB	Kambopura	29.6368	76.9812	ND	550	650	700	600
Karnal_67	Karnal_514	SGWB	Karnal	29.6967	76.953	630	600	650	650	600
Karnal_67	Karnal_514	Atal Jal	Kharkali_30983	29.6036	76.9723	ND	ND	ND	687	655
Karnal_67	Karnal_514	Atal Jal	Kuruli_30986	29.7614	76.9912	ND	ND	ND	ND	840
Karnal_67	Karnal_514	SGWB	Manglora	29.6405	77.1056	590	600	600	500	600
Karnal_67	Karnal_514	Atal Jal	Mirghan_30992	29.6411	77.0507	ND	ND	ND	ND	673
Karnal_67	Karnal_514	Atal Jal	Mohidipur_30994	29.6477	77.0765	ND	ND	ND	816	794
Karnal_67	Karnal_514	Atal Jal	Mustafabad_30996	29.6465	77.1115	ND	ND	ND	ND	585
Karnal_67	Karnal_514	SGWB	Mustafabad	29.6462	77.1119	640	650	650	350	400
Karnal_67	Karnal_514	Atal Jal	Nagla Megha_30998	29.6216	77.0654	ND	ND	ND	ND	729

AtalBhujalYojana - Block Hydrogeological Report

Name of District	Name of Block	Source	Name of village/ OW data	Latitude	Longitude	EC June 2020	EC June-2021	EC June-2022	EC June-2023	EC June-2024
Karnal_67	Karnal_514	SGWB	Nalipar	29.685	77.0945	480	500	550	950	950
Karnal_67	Karnal_514	Atal Jal	Nalvi Par_31001	29.6816	77.0966	ND	ND	ND	ND	928
Karnal_67	Karnal_514	Atal Jal	Nasir Pur_31002	29.6866	77.1155	ND	ND	ND	ND	895
Karnal_67	Karnal_514	SGWB	Nasirpur	29.6846	77.1141	500	600	500	700	600
Karnal_67	Karnal_514	SGWB	Phusgarh	29.4149	77.015	500	500	550	500	550
Karnal_67	Karnal_514	SGWB	Pundrak	29.72	76.9407	550	600	600	850	850
Karnal_67	Karnal_514	Atal Jal	Pundrak_31004	29.7213	76.942	ND	ND	ND	ND	1486
Karnal_67	Karnal_514	SGWB	Ramba	29.789	76.9802	650	650	500	300	300
Karnal_67	Karnal_514	Atal Jal	Ramba_31005	29.799	76.9867	ND	ND	ND	ND	668
Karnal_67	Karnal_514	SGWB	Ranwar	29.6249	76.9972	560	600	550	900	900
Karnal_67	Karnal_514	Atal Jal	Ranwar_31006	29.6457	77.0217	ND	ND	ND	ND	1131
Karnal_67	Karnal_514	Atal Jal	Rasulpur Kalan_31007	29.6792	77.0613	ND	ND	ND	769	751
Karnal_67	Karnal_514	Atal Jal	Rasulpur Khurd_31008	29.6746	77.0434	ND	ND	ND	ND	924
Karnal_67	Karnal_514	Atal Jal	Rattan Garh_31009	29.6759	76.9355	ND	ND	ND	ND	774
Karnal_67	Karnal_514	Atal Jal	Rukanpur_246034	29.7352	76.9484	ND	ND	ND	503	488
Karnal_67	Karnal_514	Atal Jal	Salaru_31012	29.7458	76.9958	ND	ND	ND	681	619
Karnal_67	Karnal_514	Atal Jal	Sangoha_31013	29.7875	77.0363	ND	ND	ND	724	662
Karnal_67	Karnal_514	Atal Jal	Sarfa Bad Majra_31015	29.6911	77.0654	ND	ND	ND	ND	1162
Karnal_67	Karnal_514	Atal Jal	Shekh Pura Jagir_31016	29.6555	77.0314	ND	ND	ND	ND	1071
Karnal_67	Karnal_514	Atal Jal	Sohana_31018	29.6589	77.0376	ND	ND	ND	527	503
Karnal_67	Karnal_514	Atal Jal	Subhri_31019	29.6895	77.0562	ND	ND	ND	ND	1270
Karnal_67	Karnal_514	SGWB	Subri	29.6933	77.0549	840	800	750	1400	1350
Karnal_67	Karnal_514	SGWB	Taprana	29.738	77.019	500	500	600	700	700
Karnal_67	Karnal_514	Atal Jal	Taprana_31020	29.7423	77.018	ND	ND	ND	ND	1033
Karnal_67	Karnal_514	Atal Jal	Tikri_31021	29.7385	77.0072	ND	ND	ND	ND	1004
Karnal_67	Karnal_514	SGWB	Uchana	29.7416	76.9755	620	650	650	600	650
Karnal_67	Karnal_514	Atal Jal	Uncha Samana_31022	29.6262	77.007	ND	ND	ND	671	655