

# ATAL BHUJAL YOJANA (Atal Jal)

**State : HARYANA**

**Department : IRRIGATION & WATER  
RESOURCE DEPARTMENT**

**BLOCK : PEHOWA**

**DISTRICT : KURUKSHETRA**

**YEAR : 2024-2025**

---

*Towards partial fulfilment of requirements for Disbursement of  
Incentive under DLI -1*

---

# HYDROGEOLOGICAL REPORT

## (YEAR: 2024-25)

STATE	:	HARYANA
DISTRICT	:	KURUKSHETRA
BLOCK/TALUK	:	PEHOWA
BLOCK/TALUK HQs	:	PEHOWA

A		GENERAL INFORMATION			
1.	Geographical area (Ha)	:	42030		
2.	No. of Gram Panchayats	:	65		
3.	No. of towns	:	1		
4.	No. of villages	:	72		
5.	Population (2011)	:	Male	Female	Total
			79625	75229	154854
6.	Rainfall (mm) (2023)	:	Monsoon	Non-monsoon	Annual
			757	290	1047
7.	River basin	:	Ghaggar river basin		
8.	Major soil types	:	Loamy sand (Tropical arid brown)		

B		LAND USE (2023-24)		
1.	Forest area (Ha)	:	2007	
2.	Cultivable area (Ha)	:	35039	
3.	Net sown area (Ha)	:	34964	
4.	Gross cropped area (Ha)	:	69640	

C		CROPPING PATTERN (As in 2023-24)				
1.	Major crops grown	:	Kharif	Rabi	Summer	Perennial
			Paddy	Wheat	Summer moong	Sugarcane
			Jowar	Barseem	Maize as green fodder	
				Sarson		
			Seasonal vegetables	Potato and others seasonal vegetables		

D		IRRIGATION FACILITIES (As in 2023-24)					
1.	Net irrigated area (Ha)	:	34964				
2.	Gross irrigated area (Ha)	:	69640				
3.	Area under irrigation (Ha) (Source-wise)	:	DW	BW/TW	Tanks/Ponds	Canals	Others
			-	34819	-	145	-

E		GEOLOGY & HYDROGEOLOGY		
1.	Predominant rocktype	:	Sand with Kankar , Silt and Clay	
2.	Major geological formations	:	Older and Newer Alluvium	
3.	Important water-bearing formations	:	Sand	
4.	Status of coverage under NAQUIM	:	Covered.	

Atal Bhujal Yojana - Block Hydrogeological Report

F GROUND WATER CONDITIONS											
1	No. of wells used for Water Level (WL) monitoring.	:	Open wells				BW/TW/ PZ				
			CGWB	SGWB	Atal Jal	Total	CGWB	SGWB	Atal Jal	Total	
			1	0	0	1	5	23	76	104	
2	Monitoring mechanism (Nos.)	:	Manual			DWLR			Telemetry		
			CGWB	SGWB	Atal Jal	CGWB	SGWB	Atal Jal	CGWB	SGWB	Atal Jal
			4	23	36	2	0	40	2	0	40
3	Monitoring frequency	:	Agency	No. of times monitored/year							
			CGWB	2 times/year Pre and Post Monsoon							
			SGWB	2 times/year Pre and Post Monsoon							
			Atal Jal	2 times/year Pre and Post Monsoon							
4	Period of water level data availability.	:	Agency	Period of WL data availability (From - To)							
				From (year)			To (year)				
			CGWB	2015			2024				
			SGWB	2015			2024				
			Atal Jal	2023			2024				
5	Water level range (m.bgl)	:	Minimum/Village				Maximum/Village				
	Pre-monsoon (May – June 2024)		33.34/Bhor Saidan_31239				45.57/Talheri_31292				
	Post-monsoon (Oct/Nov 2024)		34.32/Bhor Saidan_31239				47.02/Dhani Rampura_31249				
6	Seasonal WL fluctuation range (m)	:	Minimum/ Village				Maximum/ Village				
			-5.08/Ratangarh Kakrali_31267				0.05/Jakhawala_31261				

G GROUND WATER QUALITY											
1	No. of wells used for Water Quality (WQ) monitoring.	:	Open Wells				BW/TW/ PZ				
			CGWB	SGWB	Atal Jal	Total	CGWB	SGWB	Atal Jal	Total	
			1	0	0	1	4	23	62	89	
2	Monitoring frequency	:	Agency	No. of times monitored/year							
			CGWB	1 time/year							
			SGWB	1 time/year							
			Atal Jal	1 time/year							
3	Period of water quality data availability	:	Agency	Period of WQ data availability (Years)							
			CGWB	2015 to 2024							
			SGWB	2020 to 2024							
			Atal Jal	2023 to 2024							
4	Parameters analysed	:	Agency	Parameters Analysed							
			CGWB	pH,EC,TH,Ca,Mg,Na,K,CO <sub>3</sub> ,HCO <sub>3</sub> , SO <sub>4</sub> ,Cl,F,NO <sub>3</sub>							
			SGWB	EC							
			Atal Jal	pH,EC,TDS,TH,Ca,Mg,Na,K,CO <sub>3</sub> ,HCO <sub>3</sub> , SO <sub>4</sub> ,Cl,F,NO <sub>3</sub>							
5	Known ground water quality issues, if any	:	No Such Issue								

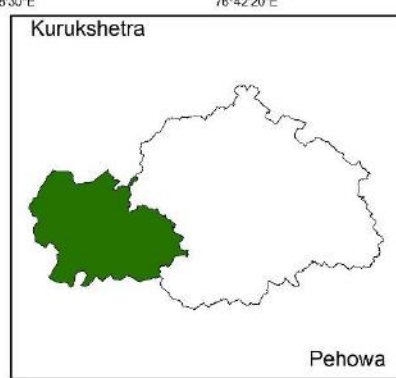
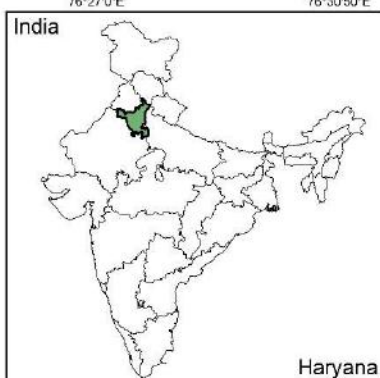
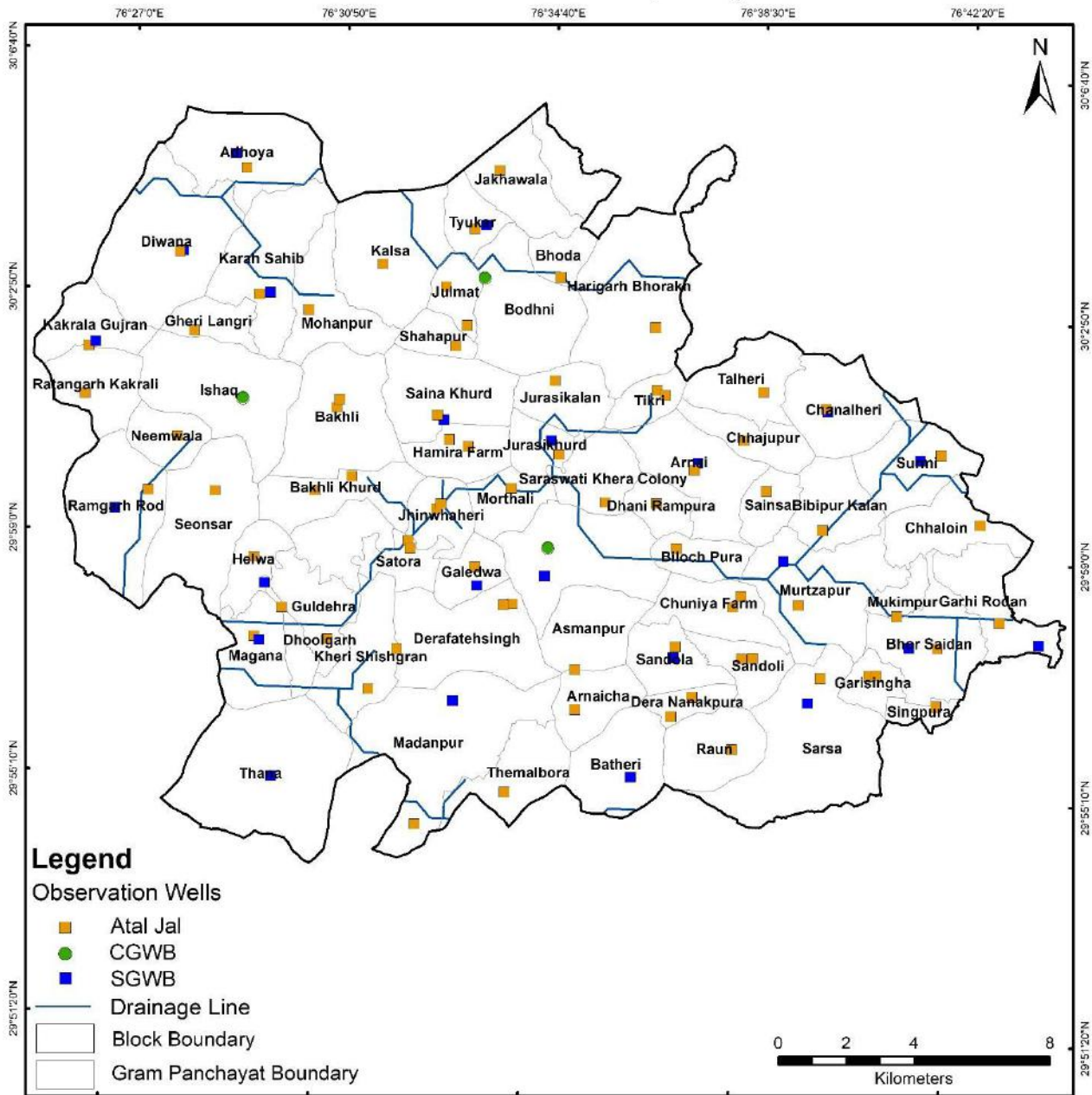
H. GROUND WATER RESOURCES									
1.	Latest assessment year	:	2023						
2.	Assessment Unit	:	Block						
3.	Annual extractable GW resource (ha.m)	:	9031.0						
4.	Current annual GW extraction (ha.m)	:	16864.1						
5.	Net GW availability for future use (ha.m)	:	0.0						
6.	Stage of GW extraction (%)	:	193.14 %						
7.	Category of block/taluk/(2023)	:	Over Exploited						
8.	Category of block/taluk/ in previous assessments		2023	2020	2017	2013	2011	2009	2004
			Over Exploited	Over Exploited	Over Exploited	Over Exploited	Over Exploited	Over Exploited	Over Exploited

I WATER-RELATED SCHEMES				
1.	Schemes with a bearing on ground water, being implemented in the block / taluk.			
	Centrally Sponsored /Central Sector Schemes	i)	PMKSY	
		ii)	JJM	
		iii)	RKVY	
		iv)	MGNREGA	
	State Schemes	i)	State Plan Scheme (Head 2402)	
		ii)	MPMV	
		iii)		
		iv)		

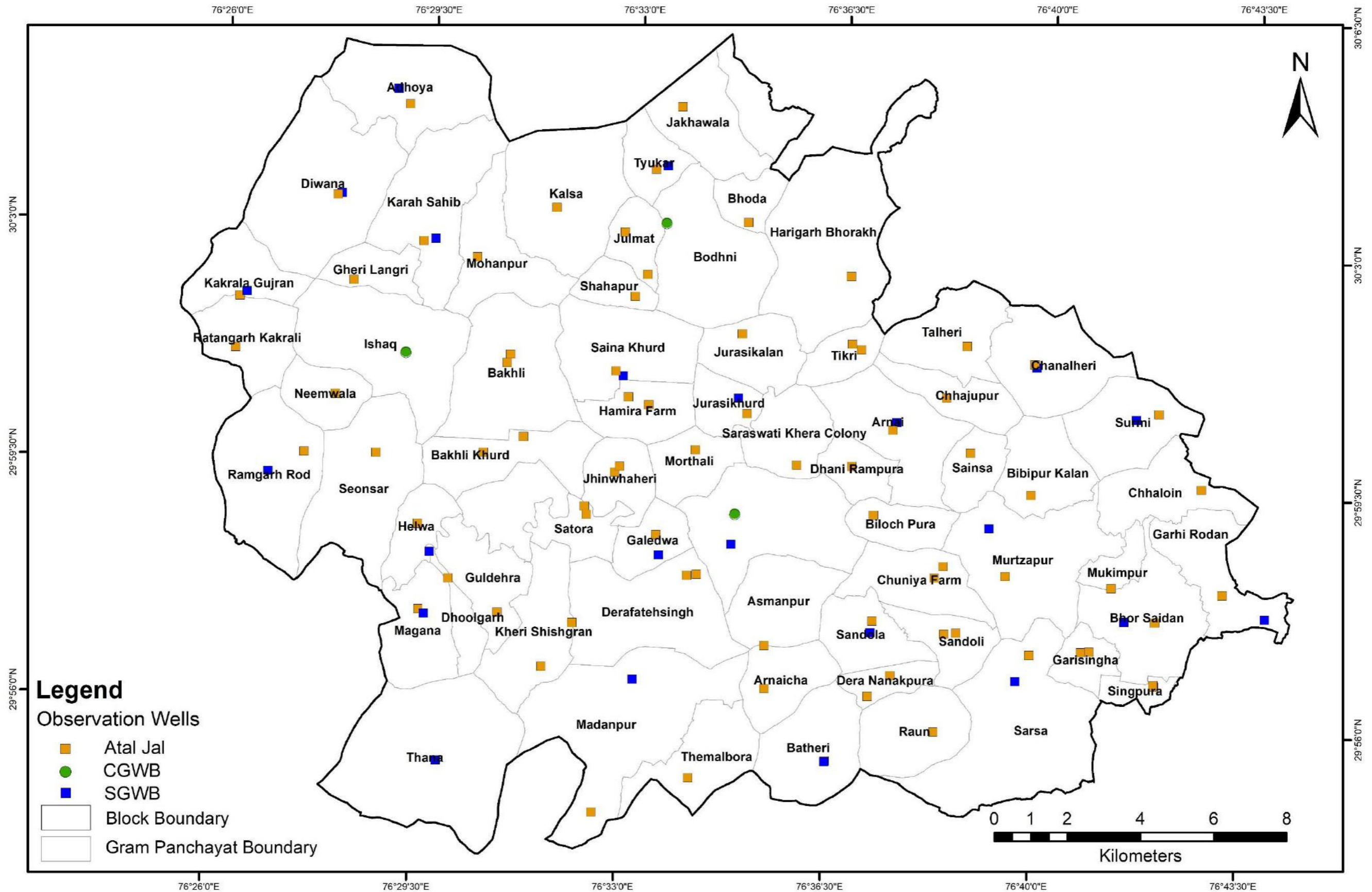
J GROUND WATER RELATED ISSUES		
1.	Ground water related issues of the block/	
	i) Issues related to GW availability	: Groundwater depletion in areas with Industries
	ii) Issues related to GW quality	: Generally, it is suitable for drinking purposes as chemical parameters are well within the permissible limits for safe drinking water set by Bureau of Indian standard (BIS)
	iii) Other issues if any.	:

K ANNEXURES	
I.	Basic data of observation wells – Attached
II.	Historical water level data – Attached
III.	Historical water quality data – Attached

## Location Map of Block- Pehowa, District- Kurukshetra, Haryana



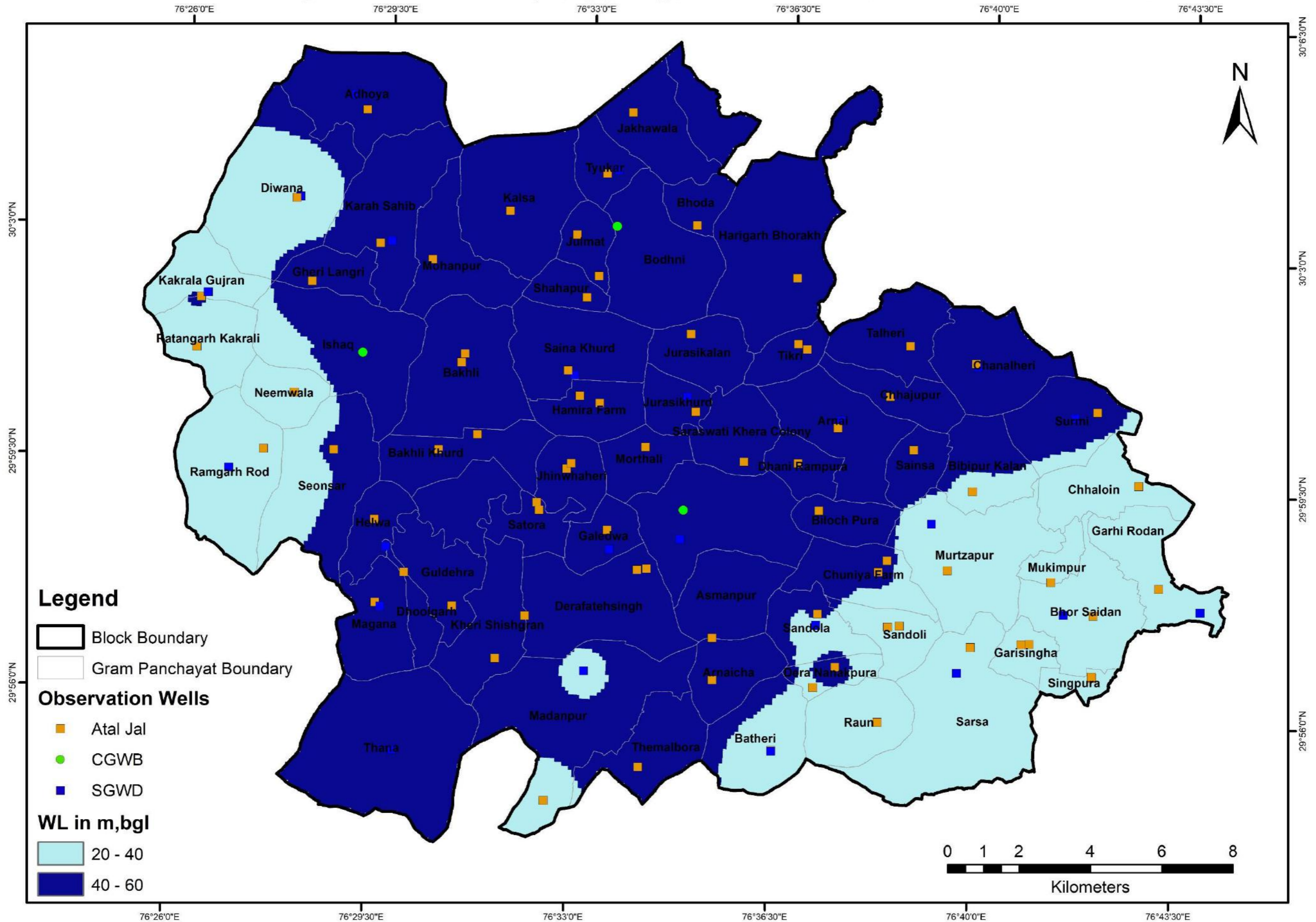
# Location of Observation Wells for Monitoring Water Levels and Water Quality, Block-Pehowa, District- Kurukshetra, Haryana



# Hydrogeological Map, Block- Pehowa, District- Kurukshetra, Haryana

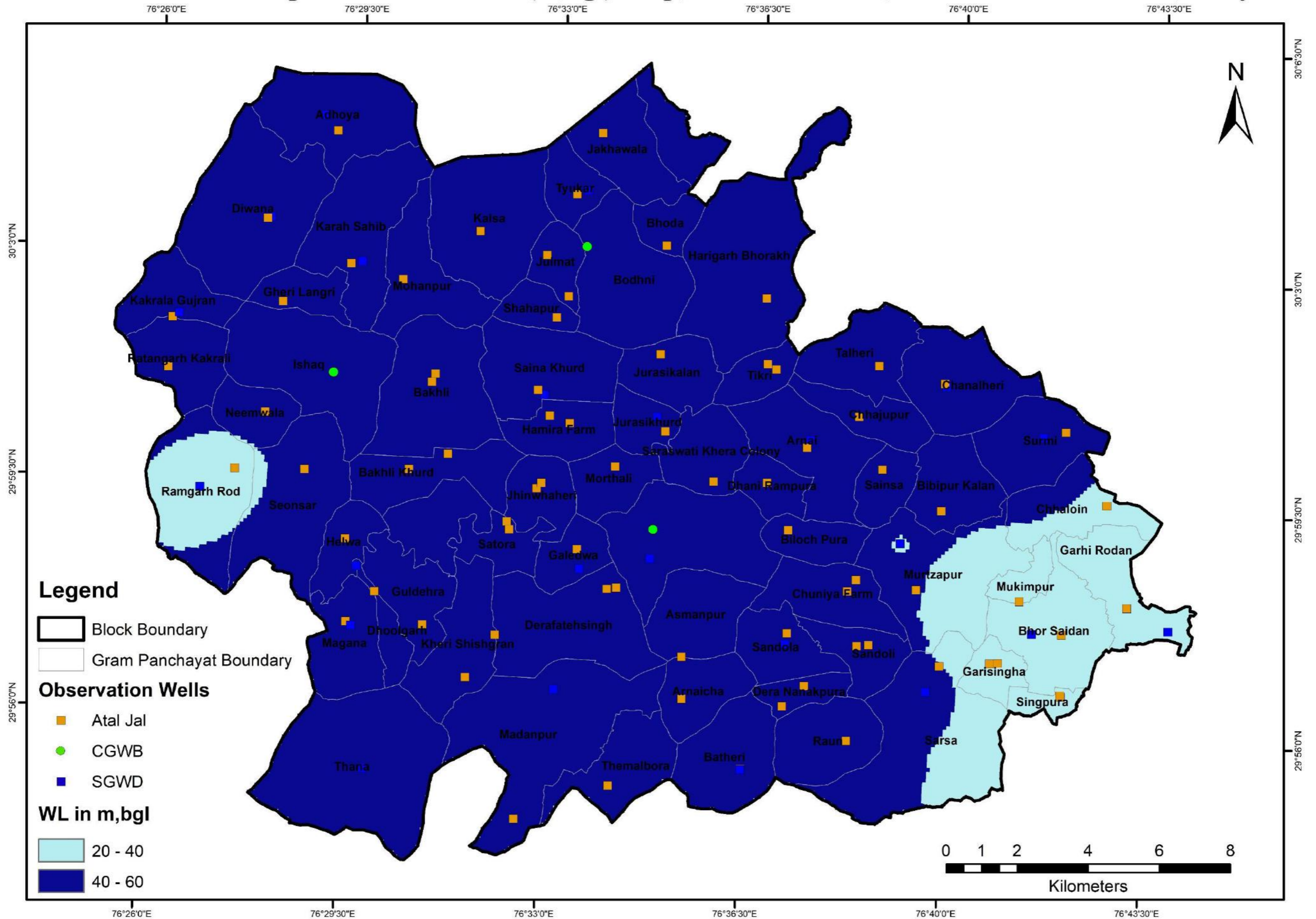


## Pre Monsoon 2024 Depth to Water Level (m,bgl) Map, Block - Pehowa, District - Kurukshetra, Haryana

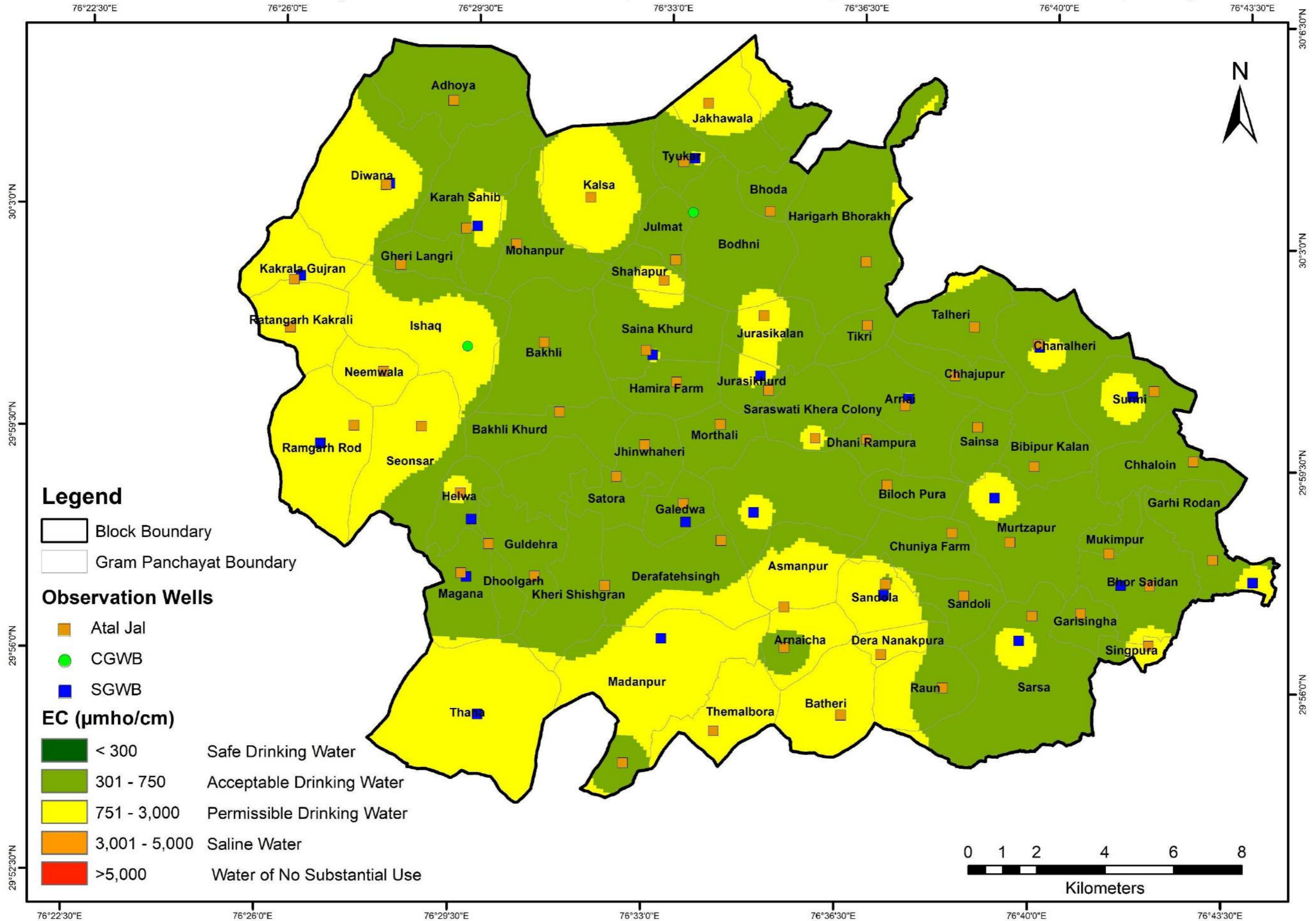




# Post Monsoon 2024 Depth to Water Level (m,bgl) Map, Block - Pehowa, District - Kurukshetra, Haryana



# Electrical Conductivity of Groundwater-2024, Block - Pehowa, District - Kurukshetra, Haryana



ANNEXURE: I  
BASIC DATA OF MONITORING WELLS

State	Haryana			District	Kurukshetra			Block	Pehowa						
S.No	Well ID	Gram Panchayat	Name of the village	Site Name	Latitude	Longitude	Type of Well	Reduced Level	Aquifer Type/Lithology	Height of Measuring (m, agl)	Depth (m,bgl)	Diameter (m)	Purpose of Monitoring (WL/WQ)	Monitoring Mechanism	Agency
1.	KKR_PEH_ADH_1	Adhoya_31231	Adhoya	Panjaba	30.0812	76.4846	Tube Well	246	Unconfined to Confined	0.39	85	0.13	WQ	Manual	Atal Jal
2.	KKR_PEH_ARN_1	Arnai_31232	Arnai	Binni Ram	30.0055	76.6245	Tube Well	250	Unconfined to Confined	0.74	91	0.19	WQ	Manual	Atal Jal
3.	HR_GW_428	Arnaicha_31233	Arnaicha	Govt Sr.Sec. School, Arnaicha	29.9408	76.5908	Piezometer	250	Semi-Confined To Confined	0.50	98	0.10	Both	Telemetric	Atal Jal
4.	HR_GW_444	Asmanpur_31234	Asmanpur	Panchayat Land Asmanpur	29.9514	76.5903	Piezometer	246	Semi-Confined To Confined	0.50	95	0.10	Both	Telemetric	Atal Jal
5.	GWL-06-068-00519-00031236-001	Bakhli Khurd_31236	Bakhlikhurd	Near Govt. Primary School	29.9962	76.5090	Tube Well	245	Semi Confined to Confined	0.50	99	0.10	WL	Manual	Atal Jal-Private
6.	KKR_PEH_BAKHLI KHURD_1	Bakhli Khurd_31236	Bakhli Khurd	Sukhdev	30.0004	76.5202	Tube Well	246	Unconfined to Confined	0.26	116	0.17	WQ	Manual	Atal Jal
7.	GWL-06-068-00519-00031235-001	Bakhli_31235	Bakhli	Near Mobile Tawer Ishaq Rd	30.0206	76.5157	Tube Well	245	Semi Confined to Confined	0.10	90	0.10	WL	Manual	Atal Jal-Private
8.	KKR_PEH_BAK_1	Bakhli_31235	Bakhli	Jasmer	30.0185	76.5147	Tube Well	243	Unconfined to Confined	0.70	98	0.10	WQ	Manual	Atal Jal
9.	HR_GW_446	Batheri_31237	Batheri	Govt Primary School, Batheri	29.9236	76.6086	Piezometer	248	Semi-Confined To Confined	0.50	95	0.10	Both	Telemetric	Atal Jal
10.	HR_GW_429	Bhoda_31243	Bhoda	Govt. Crematorium, Bhoda	30.0552	76.5815	Piezometer	246	Semi-Confined To Confined	0.50	100	0.10	Both	Telemetric	Atal Jal
11.	HR_GW_430	Bhor Saidan_31239	Bhor Saidan	Govt.High School,Bhor Saidan	29.9605	76.7004	Piezometer	249	Semi-Confined To Confined	0.50	99	0.10	Both	Telemetric	Atal Jal
12.	HR_GW_447	Bibipur Kalan_31241	Bibipur Kalan	Govt. Crematorium, Bibipur Kalan	29.9907	76.6641	Piezometer	250	Semi-Confined To Confined	0.50	102	0.10	Both	Telemetric	Atal Jal
13.	HR_GW_448	Biloch Pura_31242	Bilochpura	Govt Middle School, Bilochpura	29.9844	76.6199	Piezometer	246	Semi-Confined To Confined	0.50	110	0.10	Both	Telemetric	Atal Jal
14.	HR_GW_449	Chanalheri_31245	Chanalheri	Govt Middle School, Chanalheri	30.0229	76.6639	Piezometer	251	Semi-Confined To Confined	0.50	105	0.10	Both	Telemetric	Atal Jal
15.	HR_GW_464	Chhajpur_31247	Chhajpur	Govt Primary School, Chhajpur	30.0139	76.6393	Piezometer	248	Semi-Confined To Confined	0.50	98	0.10	Both	Telemetric	Atal Jal
16.	HR_GW_431	Chhaloin_31246	Challion	Govt Primary School, Challion	29.9936	76.7122	Piezometer	252	Semi-Confined To Confined	0.50	100	0.10	Both	Telemetric	Atal Jal
17.	GWL-06-068-00519-00265631-001	Chuniya Farm_265631	Chuniya Farm	Sarpanch Mulkit Singh Ghar	29.9695	76.6377	Tube Well	247	Semi Confined to Confined	0.35	91	0.10	WL	Manual	Atal Jal-Private
18.	KKR_PEH_CHU_1	Chuniya Farm_265631	Chuniya Farm	Trilochan	29.9725	76.6401	Tube Well	249	Unconfined to Confined	0.36	137	0.15	WQ	Manual	Atal Jal
19.	GWL-06-068-00519-00031276-001	Dera Nanakpura_31276	Dera Nanakpur	Near Anganwadi	29.9452	76.6262	Tube Well	249	Semi Confined to Confined	0.10	98	0.15	WL	Manual	Atal Jal-Private

Atal Bhujal Yojana - Block Hydrogeological Report

S.No	Well ID	Gram Panchayat	Name of the village	Site Name	Latitude	Longitude	Type of Well	Reduced Level	Aquifer Type/Lithology	Height of Measuring (m, agl)	Depth (m,bgl)	Diameter (m)	Purpose of Monitoring (WL/WQ)	Monitoring Mechanism	Agency
20.	KKR_PEH_DER_1	Dera Nanakpura_31276	Dera Nanakpura	Balkar	29.9398	76.6200	Tube Well	247	Unconfined to Confined	0.28	79	0.18	WQ	Manual	Atal Jal
21.	GWL-06-068-00519-00031248-001	Derafatehsingh_31248	Dera Fathe Singh	Near Govt School	29.9678	76.5678	Tube Well	247	Semi Confined to Confined	0.40	96	0.10	WL	Manual	Atal Jal-Private
22.	KKR_PEH_DERA FATEH_1	Derafatehsingh_31248	Derafatehsingh	Kare Singh	29.9682	76.5705	Tube Well	247	Unconfined to Confined	0.70	88	0.13	WQ	Manual	Atal Jal
23.	HR_GW_450	Dhani Rampura_31249	Dhani Rampura	Govt Primary School, Dhani Rampura	29.9962	76.6133	Piezometer	248	Semi-Confined To Confined	0.50	99	0.10	Both	Telemetric	Atal Jal
24.	HR_GW_451	Dhoolgarh_31250	Dhoolgarh	Community Centre, Dhoolgarh	29.9650	76.5004	Piezometer	242	Semi-Confined To Confined	0.50	86	0.10	Both	Telemetric	Atal Jal
25.	HR_GW_433	Diwana_31251	Diwana	Govt.High School,Diwana	30.0583	76.4652	Piezometer	244	Semi-Confined To Confined	0.50	108	0.10	Both	Telemetric	Atal Jal
26.	KKR_PEH_GAL_1	Galedwa_31252	Galedwa	Daljeet	29.9776	76.5587	Tube Well	245	Unconfined to Confined	0.22	110	0.19	WQ	Manual	Atal Jal
27.	KKR_PEH_GAR_1	Garhi Rodan_31254	Garhi Rodan	Krishan Ram	29.9678	76.7192	Tube Well	248	Unconfined to Confined	0.52	122	0.18	WQ	Manual	Atal Jal
28.	GWL-06-068-00519-00031255-001	Garisingha_31255	Gargi Singha	Near Sarpanch House	29.9527	76.6822	Tube Well	249	Semi Confined to Confined	0.50	96	0.25	WL	Manual	Atal Jal-Private
29.	KKR_PEH_GAS_1	Garisingha_31255	Garisingha	Narender	29.9526	76.6799	Tube Well	249	Unconfined to Confined	0.50	107	0.23	WQ	Manual	Atal Jal
30.	HR_GW_453	Gheri Langri_31253	Gari Langari	Govt. Crematorium, Gari Langari	30.0374	76.4706	Piezometer	244	Semi-Confined To Confined	0.50	107	0.10	Both	Telemetric	Atal Jal
31.	HR_GW_452	Guldehra_31256	Guldehra	Govt.Veterinary Hospital,Guldehra	29.9570	76.5146	Piezometer	244	Semi-Confined To Confined	0.50	107	0.10	Both	Telemetric	Atal Jal
32.	GWL-06-068-00519-00031258-001	Hamira Farm_31258	Hamira Farm	Mange Ram Near Shiv Mandir	30.0112	76.5494	Tube Well	246	Semi Confined to Confined	0.50	97	0.10	WL	Manual	Atal Jal-Private
33.	KKR_PEH_HAM_1	Hamira Farm_31258	Hamira Farm	Jagmohan	30.0094	76.5552	Tube Well	246	Unconfined to Confined	0.37	125	0.16	WQ	Manual	Atal Jal
34.	HR_GW_454	Harigarh Bhorakh_31240	Harigarh Borakh	Govt Sr.Sec. School, Harigarh Borakh	30.0429	76.6111	Piezometer	249	Semi-Confined To Confined	0.50	109	0.10	Both	Telemetric	Atal Jal
35.	HR_GW_455	Helwa_31259	Helwa	Govt Middle School, Helwa	29.9781	76.4912	Piezometer	247	Semi-Confined To Confined	0.50	106	0.10	Both	Telemetric	Atal Jal
36.	HR_GW_435	Jakhawala_31261	Jakhawala	Govt. Crematorium, Jakhawala	30.0831	76.5617	Piezometer	249	Semi-Confined To Confined	0.50	110	0.10	Both	Telemetric	Atal Jal
37.	HR_GW_458	Jhinwhaheri_31263	Jhinwharedi	Community Centre, Jhinwharedi	29.9926	76.5463	Piezometer	175.98	Semi Confined to Confined	0.50	90	0.10	Both	Telemetric	Atal Jal
38.	GWL-06-068-00519-00031263-001	Jhinwhaheri_31263	Jhinwhaheri	Shiv Mandir	29.9940	76.5476	Tube Well	243	Semi Confined to Confined	0.14	92	0.10	WL	Manual	Atal Jal-Private
39.	GWL-06-068-00519-00031265-001	Julmat_31265	Julmat	Ambershain Sarpanch House	30.0517	76.5468	Tube Well	248	Semi Confined to Confined	0.10	90	0.10	WL	Manual	Atal Jal-Private
40.	KKR_PEH_JUL_1	Julmat_31265	Julmat	Narender	30.0415	76.5536	Tube Well	243	Unconfined to Confined	0.10	79	0.10	WQ	Manual	Atal Jal

Atal Bhujal Yojana - Block Hydrogeological Report

S.No	Well ID	Gram Panchayat	Name of the village	Site Name	Latitude	Longitude	Type of Well	Reduced Level	Aquifer Type/Lithology	Height of Measuring (m, agl)	Depth (m,bgl)	Diameter (m)	Purpose of Monitoring (WL/WQ)	Monitoring Mechanism	Agency
41.	HR_GW_436	Jurasikalan_31264	Jurasi Kalan	Panchayat Land Jurasi Kalan	30.0277	76.5809	Piezometer	245	Semi-Confined To Confined	0.50	96	0.10	Both	Telemetric	Atal Jal
42.	KKR_PEH_JORASI KHURD_1	Jurasikhurd_31262	Jurasikhurd	Rao Virender Singh	30.0082	76.5831	Tube Well	247	Unconfined to Confined	0.56	143	0.19	WQ	Manual	Atal Jal
43.	HR_GW_456	Kakrala Gujran_31266	Kakrala Gujrana	Govt Middle School, Kakrala Gujran	30.0325	76.4386	Piezometer	243	Semi-Confined To Confined	0.50	110	0.10	Both	Telemetric	Atal Jal
44.	HR_GW_437	Kalsa_31268	Kalsa	Govt Sr.Sec. School, Kalsa	30.0571	76.5272	Piezometer	247	Semi-Confined To Confined	0.50	106	0.10	Both	Telemetric	Atal Jal
45.	KKR_PEH_KAR_1	Karah Sahib_31270	Karah Sahib	Subhash	30.0477	76.4900	Tube Well	245	Unconfined to Confined	0.80	85	0.17	WQ	Manual	Atal Jal
46.	GWL-06-068-00519-00031269-001	Kheri Shishgran_31269	Kheri Shishgran	Near Govt. School	29.9442	76.5276	Tube Well	248	Semi Confined to Confined	0.30	97	0.10	WL	Manual	Atal Jal-Private
47.	KKR_PEH_KHE_1	Kheri Shishgran_31269	Kheri Shishgran	Jagtar Singh	29.9552	76.5359	Tube Well	245	Unconfined to Confined	0.32	128	0.13	WQ	Manual	Atal Jal
48.	HR_GW_438	Madanpur_31273	Madanpur	Panchayat Land, Madanpur	29.9088	76.5433	Piezometer	245	Semi-Confined To Confined	0.50	108	0.10	Both	Telemetric	Atal Jal
49.	HR_GW_439	Magana_31271	Mangana	Govt Middle School, Mangana	29.9571	76.4923	Piezometer	245	Semi-Confined To Confined	0.50	103	0.10	Both	Telemetric	Atal Jal
50.	HR_GW_457	Mohanpur_31274	Mohanpur	Govt Middle School, Mohanpur	30.0442	76.5052	Piezometer	245	Semi-Confined To Confined	0.50	108	0.10	Both	Telemetric	Atal Jal
51.	KKR_PEH_MOR_1	Morthali_31272	Morthali	Bhajan	29.9988	76.5689	Tube Well	245	Unconfined to Confined	0.28	116	0.15	WQ	Manual	Atal Jal
52.	HR_GW_459	Mukimpur_298007	Mukimpura	Govt Primary School, Mukimpura	29.9686	76.6878	Piezometer	246	Semi-Confined To Confined	0.50	100	0.10	Both	Telemetric	Atal Jal
53.	KKR_PEH_MUR_1	Murtzapur_31275	Murtzapur	Baljit Singh	29.9705	76.6577	Tube Well	246	Unconfined to Confined	0.54	107	0.18	WQ	Manual	Atal Jal
54.	HR_GW_445	Neemwala_31277	Neemwala	Govt Middle School, Neemwala	30.0093	76.4666	Piezometer	247	Semi-Confined To Confined	0.50	92	0.10	Both	Telemetric	Atal Jal
55.	HR_GW_460	Ramgarh Rod_31278	Ram Garh Rod	Govt Middle School, Ramgarh Rod	29.9947	76.4584	Piezometer	244	Semi-Confined To Confined	0.50	106	0.10	Both	Telemetric	Atal Jal
56.	HR_GW_440	Ratangarh Kakrali_31267	Rattan Garh Kakrali	Govt Middle School, Ratangarh Kakrali	30.0198	76.4379	Piezometer	244	Semi-Confined To Confined	0.50	91	0.10	Both	Telemetric	Atal Jal
57.	HR_GW_441	Raun_31279	Ruan	Govt.High School,Ruan	29.9317	76.6390	Piezometer	250	Semi-Confined To Confined	0.50	97	0.10	Both	Telemetric	Atal Jal
58.	HR_GW_442	Saina Khurd_31288	Saina Saida	Govt Middle School, Saina Khurd	30.0175	76.5456	Piezometer	241	Semi-Confined To Confined	0.50	107	0.10	Both	Telemetric	Atal Jal
59.	HR_GW_461	Sainsa_31281	Sainsa	Govt Middle School, Sainsa	30.0006	76.6466	Piezometer	250	Semi-Confined To Confined	0.50	97	0.10	Both	Telemetric	Atal Jal
60.	HR_GW_462	Sandola_31282	Sandhola	Gram Sachivalay,Sandhola	29.9584	76.6206	Piezometer	246	Semi-Confined To Confined	0.50	103	0.10	Both	Telemetric	Atal Jal
61.	GWL-06-068-00519-00031283-001	Sandoli_31283	Sandoli	Moni Gujjar Field Tubewell	29.9558	76.6410	Tube Well	248	Semi Confined to Confined	0.40	80	0.10	WL	Manual	Atal Jal-Private

Atal Bhujal Yojana - Block Hydrogeological Report

S.No	Well ID	Gram Panchayat	Name of the village	Site Name	Latitude	Longitude	Type of Well	Reduced Level	Aquifer Type/Lithology	Height of Measuring (m, agl)	Depth (m,bgl)	Diameter (m)	Purpose of Monitoring (WL/WQ)	Monitoring Mechanism	Agency
62.	KKR_PEH_SAN_1	Sandoli_31283	Sandoli	Jagdish Chander	29.9561	76.6444	Tube Well	248	Unconfined to Confined	0.93	82	0.17	WQ	Manual	Atal Jal
63.	HR_GW_463	Saraswati Khera Colony_298012	Saraswati Khera	Govt Primary School, Saraswati Khera	29.9960	76.5977	Piezometer	244	Semi-Confined To Confined	0.50	96	0.10	Both	Telemetric	Atal Jal
64.	KKR_PEH_SAR_1	Sarsa_31285	Sarsa	Kulwant Singh	29.9514	76.6652	Tube Well	249	Unconfined to Confined	0.79	107	0.19	WQ	Manual	Atal Jal
65.	GWL-06-068-00519-00031286-001	Satora_31286	Satora	Govt. Primary School, Satora	29.9819	76.5388	Tube Well	249	Semi Confined to Confined	0.50	95	0.10	WL	Manual	Atal Jal-Private
66.	KKR_PEH_SAT_1	Satora_31286	Satora	Pirti	29.9839	76.5381	Tube Well	245	Unconfined to Confined	0.30	76	0.20	WQ	Manual	Atal Jal
67.	HR_GW_465	Seonsar_31290	Seonsar	Govt Sr.Sec. School, Seonsar	29.9952	76.4787	Piezometer	246	Semi-Confined To Confined	0.50	106	0.10	Both	Telemetric	Atal Jal
68.	HR_GW_466	Shahapur_31280	Shahapur	Govt Middle School, Shahpur	30.0360	76.5503	Piezometer	244	Semi-Confined To Confined	0.50	106	0.10	Both	Telemetric	Atal Jal
69.	HR_GW_434	Singpura_31289	Singhpura	Govt Primary School, Singh Pura	29.9447	76.7008	Piezometer	238.1	Semi Confined to Confined	0.50	103	0.10	Both	Telemetric	Atal Jal
70.	GWL-06-068-00519-00031289-002	Singpura_31289	Singpura	Govt Primary School, Singh Pura	29.9451	76.7006	Tube Well	248	Semi Confined to Confined	0.90	98	0.10	WL	Manual	Atal Jal-Private
71.	HR_GW_443	Surmi_31291	Surmi	Govt Primary School, Surmi	30.0118	76.6995	Piezometer	249	Semi-Confined To Confined	0.50	103	0.10	Both	Telemetric	Atal Jal
72.	HR_GW_432	Talheri_31292	Talheri	Govt Sr.Sec. School, Talheri	30.0268	76.6446	Piezometer	251	Semi-Confined To Confined	0.50	101	0.10	Both	Telemetric	Atal Jal
73.	HR_GW_467	Themalbora_31294	Thenmal Bora	Govt. Crematorium, Thenmal Bora	29.9181	76.5703	Piezometer	246	Semi-Confined To Confined	0.50	93	0.10	Both	Telemetric	Atal Jal
74.	GWL-06-068-00519-00031295-001	Tikri_31295	Tikri	Shiv Mandir	30.0250	76.6147	Tube Well	248	Semi Confined to Confined	0.10	72	0.10	WL	Manual	Atal Jal-Private
75.	KKR_PEH_TIK_1	Tikri_31295	Tikri	Raj Kumar	30.0263	76.6122	Tube Well	249	Unconfined to Confined	0.94	113	0.15	WQ	Manual	Atal Jal
76.	KKR_PEH_TYU_1	Tyukar_298006	Tyukar	Kashmir Singh	30.0674	76.5549	Tube Well	246	Unconfined to Confined	0.97	91	0.21	WQ	Manual	Atal Jal
77.	W300315076333001	Bodhni_31244	Bodhni	Bodhni-Pz	30.0542	76.5583	Piezometer	246	Unconfined to Semi Confined	0.50	152	0.10	Both	Telemetric	CGWB
78.	W300100076293002	Ishaq_31260	Ishaque S	Ishaque S	30.0200	76.4860	Piezometer	243	Unconfined to Semi Confined	0.73	60	0.15	Both	Manual	CGWB
79.	W295900076345003	Morthali_31272	Pehowa I(M)	Pehowa (S)	29.9833	76.5806	Piezometer	250	Unconfined to Semi Confined	0.50	194	0.10	WL	Manual	CGWB
80.	W295512076300501	Thana_31293	Thana	Thana	29.9095	76.5866	Tube Well	246	Alluvium	0.50	105	0.10	WQ	Telemetric	CGWB
81.	W300245076380002	Malikpur	Malikpur	Malikpur	30.0458	76.6333	Tube Well	225	Alluvium	0.60	NA	0.15	WQ	Manual	CGWB
82.	W295900076345001	Pehowa	Pehowa	Pehowa	30.2320	76.8334	Dug Well	243	Alluvium	0.75	NA	0.10	WQ	Manual	CGWB

Atal Bhujal Yojana - Block Hydrogeological Report

S.No	Well ID	Gram Panchayat	Name of the village	Site Name	Latitude	Longitude	Type of Well	Reduced Level	Aquifer Type/Lithology	Height of Measuring (m, agl)	Depth (m,bgl)	Diameter (m)	Purpose of Monitoring (WL/WQ)	Monitoring Mechanism	Agency
83.	Ad_30.084_76.481	Adhoya_31231	Adhoya	Near Csc And Prajapati Digital Works	30.0849	76.4812	Tube Well	240.02	Unconfined and Confined	0.70	110	0.25	WL	Manual	SGWD
84.	Ur_30.007_76.625	Arnai_31232	Urnai	In The Village	30.0074	76.6254	Tube Well	246.5	Unconfined to Semi Confined	0.70	110	0.25	WL	Manual	SGWD
85.	Ba_29.923_76.609	Batheri_31237	Batheri (Dry)	North Of The Village Settlement Near Pond	29.9234	76.6086	Piezometer	244.79	Unconfined to Semi Confined	0.65	90	0.10	WL	Manual	SGWD
86.	Bh_29.96_76.692	Bhor Saidan_31239	Bhor Saidan	In The Village	29.9604	76.6917	Tube Well	246.5	Unconfined to Semi Confined	0.70	100	0.25	WL	Manual	SGWD
87.	Ch_30.022_76.664	Chanalheri_31245	Chanalheri	In The Village	30.0222	76.6645	Tube Well	247.5	Unconfined to Semi Confined	0.70	120	0.25	WL	Manual	SGWD
88.	Di_30.059_76.466	Diwana_31251	Diwana	In The Village	30.0587	76.4663	Tube Well	244	Unconfined to Semi Confined	0.70	80	0.25	WL	Manual	SGWD
89.	Ga_29.973_76.56	Galedwa_31252	Galedwa	In The Village	29.9727	76.5596	Tube Well	242.5	Unconfined to Semi Confined	0.70	100	0.25	WL	Manual	SGWD
90.	Ga_29.962_76.731	Garhi Rodan_31254	Garhi Roran	In Govt. Primary School	29.9623	76.7314	Piezometer	248.9	Unconfined and Confined	0.65	90	0.10	WL	Manual	SGWD
91.	He_29.971_76.495	Helwa_31259	Helwa	In The Village	29.9713	76.4948	Tube Well	257.6	Unconfined to Semi Confined	0.70	100	0.25	WL	Manual	SGWD
92.	Ju_30.012_76.581	Jurasikhurd_31262	Jurasi Khurd	In The Village	30.0119	76.5805	Tube Well	245.04	Unconfined to Semi Confined	0.70	100	0.25	WL	Manual	SGWD
93.	Ka_30.048_76.493	Karah Sahib_31270	Karaha Sahib	In Govt. Middle School	30.0484	76.4933	Piezometer	244.15	Unconfined and Confined	0.65	80	0.10	WL	Manual	SGWD
94.	Gu_29.942_76.554	Madanpur_31273	Gumthala Garhu	In Govt. Sr. Sec. School	29.9419	76.5535	Piezometer	241.5	Unconfined and Confined	0.65	70	0.10	WL	Manual	SGWD
95.	Ma_29.956_76.494	Magana_31271	Mangna	In The Village	29.9561	76.4939	Tube Well	240.75	Unconfined to Semi Confined	0.70	100	0.25	WL	Manual	SGWD
96.	Mu_29.982_76.653	Murtzapur_31275	Murtzapur	In Govt. Veterinary Hospital	29.9821	76.6526	Piezometer	247	Unconfined and Confined	0.65	98	0.10	WL	Manual	SGWD
97.	Ra_29.99_76.448	Ramgarh Rod_31278	Ram Garh Ror	In The Village	29.9897	76.4484	Tube Well	242	Unconfined to Semi Confined	0.70	100	0.25	WL	Manual	SGWD
98.	Ka_30.034_76.441	Ratangarh Kakrali_31267	Kakrala	In The Village	30.0336	76.4405	Tube Well	241.6	Unconfined to Semi Confined	0.70	100	0.25	WL	Manual	SGWD
99.	Sa_30.016_76.548	Saina Khurd_31288	Saina Saida	In The Village	30.0163	76.5477	Tube Well	245	Unconfined to Semi Confined	0.70	100	0.25	WL	Manual	SGWD
100.	Sa_29.956_76.62	Sandola_31282	Sandhola	In The Village	29.9555	76.6202	Tube Well	247.9	Unconfined to Semi Confined	0.70	100	0.25	WL	Manual	SGWD
101.	Sa_29.945_76.662	Sarsa_31285	Sarsa	In Govt. Sr. Sec. School	29.9448	76.6615	Piezometer	247.29	Unconfined and Confined	0.65	70	0.10	WL	Manual	SGWD
102.	Su_30.01_76.693	Surmi_31291	Surmi	In The Village	30.0101	76.6932	Tube Well	247.9	Unconfined to Semi Confined	0.70	100	0.25	WL	Manual	SGWD
103.	Th_29.92_76.499	Thana_31293	Thana	In The Village	29.9201	76.4989	Tube Well	239.7	Unconfined to Semi Confined	0.70	100	0.25	WL	Manual	SGWD

S.No	Well ID	Gram Panchayat	Name of the village	Site Name	Latitude	Longitude	Type of Well	Reduced Level	Aquifer Type/Lithology	Height of Measuring (m, agl)	Depth (m,bgl)	Diameter (m)	Purpose of Monitoring (WL/WQ)	Monitoring Mechanism	Agency
104.	Te_30.068_76.558	Tyukar_298006	Teokar	In The Village	30.0684	76.5582	Tube Well	245.35	Unconfined to Semi Confined	0.70	120	0.25	WL	Manual	SGWD
105.	Pe_29.9_76_76.58	Pehowa	Pehowa	In Sdo Office, Irrig. Deptt.	29.9759	76.5800	Piezometer	243.75	Unconfined and Confined	0.65	76	0.10	WL	Manual	SGWD



ANNEXURE: 2  
WATER LEVEL (WL) DATA OF MONITORING WELLS

State	Haryana	District	Kurukshetra	Block	Pehowa
Month of Pre-monsoon Water Level Measurement					May/June
Month of Post-monsoon water Level measurement					October

S.No.	Observation Point	Source	Well Types	Co-ordinate		Water Level (m)																			
				Latitude	Longitude	2015		2016		2017		2018		2019		2020		2021		2022		2023		2024	
						Pre	Post	Pre	Post	Pre	Post	Pre	Post	Pre	Post	Pre	Post	Pre	Post	Pre	Post	Pre	Post	Pre	Post
1	Arnaicha_31233	Atal Jal	Piezometer	29.9408	76.5908	NA	NA	NA	NA	NA	NA	NA	NA	NA	NA	NA	NA	NA	NA	NA	40.82	42.3	42.52	43.65	
2	Asmanpur_31234	Atal Jal	Piezometer	29.9514	76.5903	NA	NA	NA	NA	NA	NA	NA	NA	NA	NA	NA	NA	NA	NA	NA	39.47	42.1	41.24	41.73	
3	Batheri_31237	Atal Jal	Piezometer	29.9236	76.6086	NA	NA	NA	NA	NA	NA	NA	NA	NA	NA	NA	NA	NA	NA	NA	40.51	39.48	39.85	40.7	
4	Bhoda_31243	Atal Jal	Piezometer	30.0552	76.5815	NA	NA	NA	NA	NA	NA	NA	NA	NA	NA	NA	NA	NA	NA	NA	46.46	44.2	43.1	44.53	
5	Bhor Saidan_31239	Atal Jal	Piezometer	29.9605	76.7004	NA	NA	NA	NA	NA	NA	NA	NA	NA	NA	NA	NA	NA	NA	NA	32.73	34.98	34.5	35.4	
6	Bibipur Kalan_31241	Atal Jal	Piezometer	29.9907	76.6641	NA	NA	NA	NA	NA	NA	NA	NA	NA	NA	NA	NA	NA	NA	NA	41.15	40.95	39.28	40.2	
7	Biloch Pura_31242	Atal Jal	Piezometer	29.9844	76.6199	NA	NA	NA	NA	NA	NA	NA	NA	NA	NA	NA	NA	NA	NA	NA	39.98	43.1	42.3	45.26	
8	Chanalheri_31245	Atal Jal	Piezometer	30.0229	76.6639	NA	NA	NA	NA	NA	NA	NA	NA	NA	NA	NA	NA	NA	NA	NA	38.17	46.24	45	45.23	
9	Chhajupur_31247	Atal Jal	Piezometer	30.0139	76.6393	NA	NA	NA	NA	NA	NA	NA	NA	NA	NA	NA	NA	NA	NA	NA	44.7	45.1	44.6	46.43	
10	Chhaloin_31246	Atal Jal	Piezometer	29.9936	76.7122	NA	NA	NA	NA	NA	NA	NA	NA	NA	NA	NA	NA	NA	NA	NA	36.12	39.86	37.5	39.1	
11	Dhani Rampura_31249	Atal Jal	Piezometer	29.9962	76.6133	NA	NA	NA	NA	NA	NA	NA	NA	NA	NA	NA	NA	NA	NA	NA	46.12	46.49	45.2	47.02	
12	Dhoolgarh_31250	Atal Jal	Piezometer	29.9650	76.5004	NA	NA	NA	NA	NA	NA	NA	NA	NA	NA	NA	NA	NA	NA	NA	40.85	42.17	40.5	42.8	
13	Diwana_31251	Atal Jal	Piezometer	30.0583	76.4652	NA	NA	NA	NA	NA	NA	NA	NA	NA	NA	NA	NA	NA	NA	NA	41.01	40.75	39.1	40.16	
14	Gheri Langri_31253	Atal Jal	Piezometer	30.0374	76.4706	NA	NA	NA	NA	NA	NA	NA	NA	NA	NA	NA	NA	NA	NA	NA	40.93	41.6	40.81	41.71	
15	Guldehra_31256	Atal Jal	Piezometer	29.9570	76.5146	NA	NA	NA	NA	NA	NA	NA	NA	NA	NA	NA	NA	NA	NA	NA	42.72	43.24	41.15	44.1	
16	Harigarh Bhorakh_31240	Atal Jal	Piezometer	30.0429	76.6111	NA	NA	NA	NA	NA	NA	NA	NA	NA	NA	NA	NA	NA	NA	NA	44	45.22	43.95	44.65	
17	Helwa_31259	Atal Jal	Piezometer	29.9781	76.4912	NA	NA	NA	NA	NA	NA	NA	NA	NA	NA	NA	NA	NA	NA	NA	41.52	43.15	41	42.24	
18	Jakhawala_31261	Atal Jal	Piezometer	30.0831	76.5617	NA	NA	NA	NA	NA	NA	NA	NA	NA	NA	NA	NA	NA	NA	NA	43	44.78	44.5	44.45	
19	Jurasikalan_31264	Atal Jal	Piezometer	30.0277	76.5809	NA	NA	NA	NA	NA	NA	NA	NA	NA	NA	NA	NA	NA	NA	NA	47.27	46.26	44.6	46.48	
20	Kakrala Gujran_31266	Atal Jal	Piezometer	30.0325	76.4386	NA	NA	NA	NA	NA	NA	NA	NA	NA	NA	NA	NA	NA	NA	NA	41.05	44.5	40.8	42.65	
21	Kalsa_31268	Atal Jal	Piezometer	30.0571	76.5272	NA	NA	NA	NA	NA	NA	NA	NA	NA	NA	NA	NA	NA	NA	NA	45.25	44.43	42.7	43.72	
22	Madanpur_31273	Atal Jal	Piezometer	29.9088	76.5433	NA	NA	NA	NA	NA	NA	NA	NA	NA	NA	NA	NA	NA	NA	NA	38.6	40.59	39.04	42.74	
23	Magana_31271	Atal Jal	Piezometer	29.9571	76.4923	NA	NA	NA	NA	NA	NA	NA	NA	NA	NA	NA	NA	NA	NA	NA	42.63	43.38	40.8	43.55	
24	Mohanpur_31274	Atal Jal	Piezometer	30.0442	76.5052	NA	NA	NA	NA	NA	NA	NA	NA	NA	NA	NA	NA	NA	NA	NA	44.96	43.44	43.75	43.9	
25	Mukimpur_298007	Atal Jal	Piezometer	29.9686	76.6878	NA	NA	NA	NA	NA	NA	NA	NA	NA	NA	NA	NA	NA	NA	NA	34.39	36.3	36.3	37	
26	Neemwala_31277	Atal Jal	Piezometer	30.0093	76.4666	NA	NA	NA	NA	NA	NA	NA	NA	NA	NA	NA	NA	NA	NA	NA	38.6	39.9	39.81	41.89	
27	Ramgarh Rod_31278	Atal Jal	Piezometer	29.9947	76.4584	NA	NA	NA	NA	NA	NA	NA	NA	NA	NA	NA	NA	NA	NA	NA	38.61	34.99	35.84	37.7	
28	Ratangarh Kakrali_31267	Atal Jal	Piezometer	30.0198	76.4379	NA	NA	NA	NA	NA	NA	NA	NA	NA	NA	NA	NA	NA	NA	NA	41.23	40.25	39.2	43.28	
29	Raun_31279	Atal Jal	Piezometer	29.9317	76.6390	NA	NA	NA	NA	NA	NA	NA	NA	NA	NA	NA	NA	NA	NA	NA	37.63	40.36	39.12	41.5	
30	Saina Khurd_31288	Atal Jal	Piezometer	30.0175	76.5456	NA	NA	NA	NA	NA	NA	NA	NA	NA	NA	NA	NA	NA	NA	NA	43.55	44.46	43.8	44.5	
31	Sainsa_31281	Atal Jal	Piezometer	30.0006	76.6466	NA	NA	NA	NA	NA	NA	NA	NA	NA	NA	NA	NA	NA	NA	NA	41.39	43.07	42.6	44.3	
32	Sandola_31282	Atal Jal	Piezometer	29.9584	76.6206	NA	NA	NA	NA	NA	NA	NA	NA	NA	NA	NA	NA	NA	NA	NA	38.55	42.82	40.31	42.1	
33	Saraswati Khera Colony_298012	Atal Jal	Piezometer	29.9960	76.5977	NA	NA	NA	NA	NA	NA	NA	NA	NA	NA	NA	NA	NA	NA	NA	43.7	45.75	43.5	44.03	
34	Seonsar_31290	Atal Jal	Piezometer	29.9952	76.4787	NA	NA	NA	NA	NA	NA	NA	NA	NA	NA	NA	NA	NA	NA	NA	38.15	40.62	40.2	41.36	
35	Shahapur_31280	Atal Jal	Piezometer	30.0360	76.5503	NA	NA	NA	NA	NA	NA	NA	NA	NA	NA	NA	NA	NA	NA	NA	45.05	45.15	44.64	46.52	
36	Surmi_31291	Atal Jal	Piezometer	30.0118	76.6995	NA	NA	NA	NA	NA	NA	NA	NA	NA	NA	NA	NA	NA	NA	NA	40.76	44.05	40.5	43.5	
37	Talheri_31292	Atal Jal	Piezometer	30.0268	76.6446	NA	NA	NA	NA	NA	NA	NA	NA	NA	NA	NA	NA	NA	NA	NA	44	46.5	45.57	46.32	
38	Themalborra_31294	Atal Jal	Piezometer	29.9181	76.5703	NA	NA	NA	NA	NA	NA	NA	NA	NA	NA	NA	NA	NA	NA	NA	41.06	44	41.5	42.62	

S.No.	Observation Point	Source	Well Types	Co-ordinate		Water Level (m)																			
				Latitude	Longitude	2015		2016		2017		2018		2019		2020		2021		2022		2023		2024	
						Pre	Post	Pre	Post	Pre	Post	Pre	Post	Pre	Post	Pre	Post	Pre	Post	Pre	Post	Pre	Post	Pre	Post
39	Bakhli Khurd_31236	Atal Jal	Tube Well	29.9962	76.5090	NA	NA	NA	NA	NA	NA	NA	NA	NA	NA	NA	NA	NA	NA	NA	NA	43.64	45.16	42.9	45.6
40	Bakhli_31235	Atal Jal	Tube Well	30.0206	76.5157	NA	NA	NA	NA	NA	NA	NA	NA	NA	NA	NA	NA	NA	NA	NA	NA	42.95	44.2	43.17	44.9
41	Chuniya Farm_265631	Atal Jal	Tube Well	29.9695	76.6377	NA	NA	NA	NA	NA	NA	NA	NA	NA	NA	NA	NA	NA	NA	NA	NA	38.2	41.92	40.14	41
42	Dera Nanakpura_31276	Atal Jal	Tube Well	29.9452	76.6262	NA	NA	NA	NA	NA	NA	NA	NA	NA	NA	NA	NA	NA	NA	NA	NA	37.6	40.08	40.19	41.1
43	Derafatehsingh_31248	Atal Jal	Tube Well	29.9678	76.5678	NA	NA	NA	NA	NA	NA	NA	NA	NA	NA	NA	NA	NA	NA	NA	NA	41.71	43.5	42.58	45.96
44	Garisingha_31255	Atal Jal	Tube Well	29.9527	76.6822	NA	NA	NA	NA	NA	NA	NA	NA	NA	NA	NA	NA	NA	NA	NA	NA	34.43	37.11	34.98	38.71
45	Hamira Farm_31258	Atal Jal	Tube Well	30.0112	76.5494	NA	NA	NA	NA	NA	NA	NA	NA	NA	NA	NA	NA	NA	NA	NA	NA	42.3	45.71	43.29	44.1
46	Jhinwhaheri_31263	Atal Jal	Piezometer	29.9926	76.5463	NA	NA	NA	NA	NA	NA	NA	NA	NA	NA	NA	NA	NA	NA	NA	NA	NA	NA	41.7	45.56
47	Jhinwhaheri_31263	Atal Jal	Tube Well	29.9940	76.5476	NA	NA	NA	NA	NA	NA	NA	NA	NA	NA	NA	NA	NA	NA	NA	NA	42.84	45.9	41.75	45.6
48	Julmat_31265	Atal Jal	Tube Well	30.0517	76.5468	NA	NA	NA	NA	NA	NA	NA	NA	NA	NA	NA	NA	NA	NA	NA	NA	45.09	45.2	43.65	46.37
49	Kheri Shishgran_31269	Atal Jal	Tube Well	29.9442	76.5276	NA	NA	NA	NA	NA	NA	NA	NA	NA	NA	NA	NA	NA	NA	NA	NA	41.97	43.35	42.56	44.86
50	Sandoli_31283	Atal Jal	Tube Well	29.9558	76.6410	NA	NA	NA	NA	NA	NA	NA	NA	NA	NA	NA	NA	NA	NA	NA	NA	41.22	41.26	39.05	41.5
51	Satora_31286	Atal Jal	Tube Well	29.9819	76.5388	NA	NA	NA	NA	NA	NA	NA	NA	NA	NA	NA	NA	NA	NA	NA	NA	41.6	45.2	42.86	46.1
52	Singpura_31289	Atal Jal	Piezometer	29.9447	76.7008	NA	NA	NA	NA	NA	NA	NA	NA	NA	NA	NA	NA	NA	NA	NA	NA	NA	36.37	34.58	36.81
53	Singpura_31289	Atal Jal	Tube Well	29.9451	76.7006	NA	NA	NA	NA	NA	NA	NA	NA	NA	NA	NA	NA	NA	NA	NA	NA	34	36.37	34.85	36.51
54	Tikri_31295	Atal Jal	Tube Well	30.0250	76.6147	NA	NA	NA	NA	NA	NA	NA	NA	NA	NA	NA	NA	NA	NA	NA	NA	45.11	45.7	45.17	46.71
55	Bodhni_31244	CGWB	Piezometer	30.0542	76.5583	33.3	34.93	35.82	35.92	35.42	NA	36.57	38.91	NA	40.75	42.87	45.36	40.1	42.8	40.94	44.7	46.85	45.03	43.77	44.25
56	Ishaq_31260	CGWB	Piezometer	30.0200	76.4860	29.88	32.6	32.22	33.97	33.62	35.22	34.88	38.3	36.2	27.77	40.97	39.45	39.02	39.72	38.84	40.07	40.38	41.69	40.88	43.12
57	Morthali_31272	CGWB	Piezometer	29.9833	76.5806	32.66	38.12	38.12	39.38	37.4	42.3	38.28	40.53	40.2	42.25	42.58	44.39	NA	NA	36.32	39.68	46.6	45.44	42.52	43.44
58	Adhoya_31231	SGWD	Tube Well	30.0849	76.4812	34.05	36.05	36.58	38.1	39.1	39.84	40.87	42.86	42	42.7	41.3	43.8	42.41	42.6	40.67	42.55	42.16	43.2	41.85	44.13
59	Arnai_31232	SGWD	Tube Well	30.0074	76.6254	37.1	39.2	38.4	39.8	40.31	40.89	41.87	43.34	43.84	44.9	44.2	46.02	46	46.9	45.4	47	45.06	46.1	45.4	46.1
60	Batheri_31237	SGWD	Piezometer	29.9234	76.6086	31.25	33.15	33.24	34.86	35.53	36.08	37.08	39.07	39.12	39.9	39.63	39.62	38	38.1	37.7	38	39.51	39.33	38.5	40.7
61	Bhor Saidan_31239	SGWD	Tube Well	29.9604	76.6917	29.9	30.8	31.1	42	33.03	33.95	34.87	36.42	36.82	37.6	35.7	36	34.5	35.2	33.35	34.83	33.36	25.3	33.34	34.32
62	Chanalheri_31245	SGWD	Tube Well	30.0222	76.6645	36.8	38.5	38.77	40.1	40.9	41.54	42.58	44.16	43.8	44.8	45.02	45.2	43.95	44.8	42.9	43.7	43.02	45.8	44.2	45.23
63	Diwana_31251	SGWD	Tube Well	30.0587	76.4663	27.8	30.1	29.77	30.95	31.89	32.45	33.49	35.08	35.59	36.1	36.4	38.29	38.1	39.4	37.5	39.2	39.25	42.17	38.8	40.16
64	Galedwa_31252	SGWD	Tube Well	29.9727	76.5596	39.2	41.1	40.6	42.05	42.32	42.84	43.87	45	44.53	43.8	44.42	45	43.76	44.9	43.08	44.8	43.4	44.1	43.2	44.2
65	Garhi Rodan_31254	SGWD	Piezometer	29.9623	76.7314	28.9	29.1	29.5	30.6	31.15	31.85	32.87	32.96	33.19	34	32.7	34.61	33.05	34.35	32.45	34.07	33.58	35.2	33.75	35.68
66	Helwa_31259	SGWD	Tube Well	29.9713	76.4948	31.5	33.5	33.4	32.8	35.39	35.85	36.74	38.19	38.86	39.2	37.8	39.3	38.1	39.6	38.85	40.6	39.25	42.92	41.1	42.24
67	Jurasikhurd_31262	SGWD	Tube Well	30.0119	76.5805	39.2	41	40.5	41.1	41.5	42.12	43.14	44.78	44.32	46.2	43.73	45.62	45.5	46.9	45.93	47.7	46.2	46.8	45.5	46.1
68	Karah Sahib_31270	SGWD	Piezometer	30.0484	76.4933	30.8	32.1	32.1	33.5	34.1	34.58	35.59	37.57	37.3	39.3	38.48	40.39	39.1	40.8	39.22	40.75	40.65	41.9	41.1	42.96
69	Madanpur_31273	SGWD	Piezometer	29.9419	76.5535	32.7	34.1	33.8	35.2	35.98	36.84	37.54	39.5	38.3	39.8	39.55	39.62	38	38.1	37.1	37.5	37.8	39	39.2	42.74
70	Magana_31271	SGWD	Tube Well	29.9561	76.4939	31.4	33.7	32.9	34.1	35.12	35.68	36.68	38.24	38.05	40.02	39.3	41.06	39.4	40.6	39.72	41.6	40.85	41.8	40.8	43.55
71	Murtzapur_31275	SGWD	Piezometer	29.9821	76.6526	29	31.2	30.97	32.47	32.58	33	33.98	35.96	35.3	37.1	35.8	37.75	36.6	38.45	36.6	38.4	38.2	39.5	38.05	39.84
72	Ramgarh Rod_31278	SGWD	Tube Well	29.9897	76.4484	27.6	29.1	29.1	30.75	31	31.65	32.69	34.29	33.8	34.4	34.01	34.8	33.3	34.7	34.2	35.25	34.52	34.18	35.5	37.7
73	Ratangarh Kakrali_31267	SGWD	Tube Well	30.0336	76.4405	34.1	36.2	36.09	37.65	38.2	38.85	39.86	41.32	39.97	40	39	39.62	37.98	38.1	36.2	36.4	37.75	38.1	38.2	43.28
74	Saina Khurd_31288	SGWD	Tube Well	30.0163	76.5477	34.1	36.2	36.09	37.56	38.02	38.87	39.87	41.48	41.86	43.8	42.66	42.67	40.96	42.71	42.32	42.55	42.23	44.3	43.5	44.5
75	Sandola_31282	SGWD	Tube Well	29.9555	76.6202	33.4	34.2	35.2	36.9	36.66	36.95	37.96	39.54	39.86	41.82	39.3	41.27	39.5	39.62	37.7	38.9	38.63	44.3	39.3	42.1
76	Sarsa_31285	SGWD	Piezometer	29.9448	76.6615	31.3	32.8	32.7	34	34.67	35.21	36.31	37.25	36.66	37.5	35.6	37.53	36.3	37.9	36.2	38	37.32	39.2	37.8	41.72
77	Surmi_31291	SGWD	Tube Well	30.0101	76.6932	33.2	35.8	35.19	35.7	36.62	37.12	38.14	39.7	40.1	41.2	41.25	42.4	40.86	41.8	39.92	39.85	40.8	44.7	40.2	43.5
78	Thana_31293	SGWD	Tube Well	29.9201	76.4989	32.2	34.6	34.18	36.1	36.2	36.68	37.96	39.49	39.2	40.1	38.7	39.8	38.31	40.2	38.35	40.1	39.28	41	40.2	43.25
79	Tyukar_298006	SGWD	Tube Well	30.0684	76.5582	34.5	35.1	35.1	34.9	36.5	36.89	37.76	39.49	39.15	40.6	40.3	41.5	40.9	42.1	41.1	42.5	41.55	42.8	42.6	43.5
80	Pehowa	SGWD	Piezometer	29.9759	76.5800	38.65	40	40.14	41.3	42.07	42.68	43.68	45.61	44.03	44.8	43.55	45.68	44.9	46.7	45.32	47.15	45.55	46.2	44.65	45.5

ANNEXURE: 3  
HISTORICAL WATER QUALITY (WQ) DATA OF MONITORING WELLS

State	Haryana				District	Kurukshetra				Block	Pehowa									
Month of Collection of samples for WQ monitoring*											May/June									
Gram Panchayat	Source	Type of well	Latitude	Longitude	Year	pH	EC	TDS	TH	Ca	Mg	Na	K	CO <sub>3</sub>	HCO <sub>3</sub>	SO <sub>4</sub>	Cl	F	NO <sub>3</sub>	
Adhoya_31231	Atal Jal	Tubewell	30.0812	76.4846	2024	7.48	478	288.1	138.7	43.77	7.14	36	5	0.318	111.7	54.64	36.97	0.26	16.66	
Arnai_31232	Atal Jal	Tubewell	30.0055	76.6245	2024	7.73	473	283.9	69.36	21.88	3.58	36	4	0.046	112	55.3	13.73	0.26	16.4	
Arnaicha_31233	Atal Jal	Piezometer	29.9408	76.5908	2023	8.26	608	338	180	50	13.72	55	30	0.0	160.0	16	90	0.43	5	
Arnaicha_31233	Atal Jal	Piezometer	29.9408	76.5908	2024	8.49	580	344	147	43.28	9.45	43	5	3.8	128.1	83.48	57.32	0.27	16.3	
Asmanpur_31234	Atal Jal	Pizeometer	29.9514	76.5903	2024	8.44	1025	589	250.8	72.72	16.8	74	9	5.903	222.1	157.2	96.41	0.46	27.2	
Bakhli Khurd_31236	Atal Jal	Tubewell	30.0004	76.5202	2024	8.79	443	253.3	60.95	19.36	3.06	32	4	0.04	99.94	53.7	12.68	0.23	14.77	
Bakhli_31235	Atal Jal	Tubewell	30.0185	76.5147	2024	8.13	472	280.2	67.25	21.04	3.57	35	4	0.18	110.4	54.17	13.73	0.25	16.2	
Batheri_31237	Atal Jal	Piezometer	29.9236	76.6086	2023	8.35	1051	736	380	100	31.54	115	60	0.0	350.0	36	190	0.21	10	
Batheri_31237	Atal Jal	Piezometer	29.9236	76.6086	2024	8.16	982	620	263.7	76.18	17.85	78	10	3.3	236.7	147.3	101.6	0.49	28.5	
Bhoda_31243	Atal Jal	Piezometer	30.0552	76.5815	2023	8.28	614	120	220	60	16.46	65	35	0.0	200.0	20	110	0.54	5	
Bhoda_31243	Atal Jal	Piezometer	30.0552	76.5815	2024	7.99	582	321	134	39.82	8.4	40	5	1.1	122.8	84.35	52.11	0.26	15.2	
Bhor Saidan_31239	Atal Jal	Piezometer	29.9605	76.7004	2023	8.16	510	300.9	153	47.32	8.44	34	10.8	0.0	136.0	24.6	83.1	0.21	21.6	
Bhor Saidan_31239	Atal Jal	Piezometer	29.9605	76.7004	2024	7.87	472	266	112.4	32.9	7.35	34	4	0.7	103.2	70.02	44.29	0.21	12.8	
Bibipur Kalan_31241	Atal Jal	Piezometer	29.9907	76.6641	2023	8.17	566	332	170	50	13.72	50	25	0.0	160.0	16	90	0.32	5	
Bibipur Kalan_31241	Atal Jal	Piezometer	29.9907	76.6641	2024	7.73	522	291	125.4	36.36	8.4	37	5	0.6	111.4	77.71	46.9	0.23	13.9	
Biloch Pura_31242	Atal Jal	Piezometer	29.9844	76.6199	2023	8.16	490	292.2	148	45.35	8.44	33	10.5	0.0	130.0	23.9	80.7	0.34	21	
Biloch Pura_31242	Atal Jal	Piezometer	29.9844	76.6199	2024	7.8	458	259	108.1	31.16	7.35	33	4	0.6	99.4	67.33	41.69	0.21	12.5	
Bodhni_31244	CGWB	Tube Well	30.0542	76.5583	2015	8.48	832	ND	194.0	28.6	29.8	115.0	8.8	58.5	321.3	18.0	48.6	0.61	1.01	
Bodhni_31244	CGWB	Tube Well	30.0542	76.5583	2016	8.68	525	ND	142.9	20.4	22.3	86.0	3.2	60.0	219.7	28.0	13.9	0.37	0.00	
Bodhni_31244	CGWB	Tube Well	30.0542	76.5583	2017	8.19	915	ND	320.0	54.0	45.0	92.0	5.8	0.0	488.0	40.0	56.0	0.53	0.71	
Bodhni_31244	CGWB	Tube Well	30.0542	76.5583	2018	8.27	706	ND	160.0	16.0	29.0	120.0	2.4	0.0	354.0	40.0	43.0	0.46	29.00	
Bodhni_31244	CGWB	Tube Well	30.0542	76.5583	2019	8.94	961	ND	200.0	8.0	44.0	137.0	4.2	72.0	342.0	6.7	57.0	0.75	6.57	
Bodhni_31244	CGWB	Tube Well	30.0542	76.5583	2020	8.48	718	ND	170.1	12.0	34.0	85.0	13.0	36.0	256.3	0.0	42.5	0.08	37.00	
Bodhni_31244	CGWB	Tube Well	30.0542	76.5583	2021	8.68	570	ND	98.6	17.6	13.3	94.0	4.2	48.0	219.7	0.0	26.7	0.58	0.80	
Bodhni_31244	CGWB	Tube Well	30.0542	76.5583	2022	8.44	571	ND	100.0	16.0	14.6	88.0	6.1	36.0	238.0	0.0	35.0	0.62	1.20	
Bodhni_31244	CGWB	Tube Well	30.0542	76.5583	2023	8.09	660	ND	130.0	20.0	19.5	111.2	3.9	0.0	402.6	0.0	28.4	0.85	0.00	
Bodhni_31244	CGWB	Tube Well	30.0542	76.5583	2024	8.38	750	0	170.1	8.016	36.48	103	6	36	268.5	BDL	42.54	1.1	55	
Chanalheri_31245	Atal Jal	Piezometer	30.0229	76.6639	2023	8.19	576	319	170	40	13.71	50	25	0.0	150.0	16	80	0.21	5	
Chanalheri_31245	Atal Jal	Piezometer	30.0229	76.6639	2024	8.43	510	309	129.7	38.09	8.4	39	5	3.0	116.9	79.06	49.51	0.24	14.7	
Chhajupur_31247	Atal Jal	Piezometer	30.0139	76.6393	2023	8.08	586	384	200	50	16.46	60	30	0.0	180.0	20	100	0.34	5	
Chhajupur_31247	Atal Jal	Piezometer	30.0139	76.6393	2024	8.2	530	299	125.4	36.36	8.4	38	5	1.7	114.2	80.5	49.51	0.23	14.3	
Chhaloin_31246	Atal Jal	Piezometer	29.9936	76.7122	2023	8.45	595	406	210	60	16.46	65	35	0.0	190.0	20	100	0.45	5	
Chhaloin_31246	Atal Jal	Piezometer	29.9936	76.7122	2024	8.08	541	351	147	43.28	9.45	44	5	1.5	134.4	81.75	57.32	0.28	16.6	
Chuniya Farm_265631	Atal Jal	Tubewell	29.9725	76.6401	2024	7.7	615	345.3	84.07	26.09	4.6	44	5	0.267	136	68.89	16.9	0.32	19.77	
Dera Nanakpura_31276	Atal Jal	Tubewell	29.9398	76.62	2024	7.94	1156	691.8	168.1	52.18	9.19	87	11	0.308	272.8	139.1	34.86	0.63	38.64	
Derafatehsingh_31248	Atal Jal	Tubewell	29.9682	76.5705	2024	8.17	555	354.5	86.17	26.93	4.6	45	6	1.162	138.7	68.32	17.96	0.33	20.28	
Dhani Rampura_31249	Atal Jal	Piezometer	29.9962	76.6133	2023	7.92	428	270	140	40	10.97	40	20	0.0	130.0	12	70	0.45	5	
Dhani Rampura_31249	Atal Jal	Piezometer	29.9962	76.6133	2024	7.9	395	244	103.8	29.43	7.35	31	4	0.7	91.3	58.77	39.08	0.19	11.8	
Dhoolgarh_31250	Atal Jal	Piezometer	29.965	76.5004	2023	8.28	457	274	140	40	10.98	45	20	0.0	130.0	12	70	0.34	5	
Dhoolgarh_31250	Atal Jal	Piezometer	29.965	76.5004	2024	8.09	423	247	103.8	31.16	6.3	31	4	1.1	94.8	62.71	41.69	0.2	11.9	
Diwana_31251	Atal Jal	Piezometer	30.0583	76.4652	2023	8.01	769	432	220	60	17.83	65	35	0.0	200.0	20	110	0.97	5	

Atal Bhujal Yojana - Block Hydrogeological Report

Gram Panchayat	Source	Type of well	Latitude	Longitude	Year	pH	EC	TDS	TH	Ca	Mg	Na	K	CO <sub>3</sub>	HCO <sub>3</sub>	SO <sub>4</sub>	Cl	F	NO <sub>3</sub>
Diwana_31251	Atal Jal	Piezometer	30.0583	76.4652	2024	7.98	729	447	190.2	55.4	12.6	56	7	1.5	170.4	105.6	72.96	0.35	20.8
Galedwa_31252	Atal Jal	Tubewell	29.9776	76.5587	2024	8.81	533	323.4	77.76	24.41	4.08	41	5	0.753	126.9	64.92	15.85	0.3	18.6
Garhi Rodan_31254	Atal Jal	Tubewell	29.9678	76.7192	2024	8.01	538	330.5	79.86	25.25	4.08	42	5	0.967	129.5	66.34	16.9	0.3	18.95
Garisingha_31255	Atal Jal	Tubewell	29.9526	76.6799	2024	7.9	535	312.7	75.66	23.57	4.08	39	5	0.304	123.1	64.55	15.85	0.29	17.99
Gheri Langri_31253	Atal Jal	Piezometer	30.0374	76.4706	2023	8.34	637	447	230	60	19.2	70	35	0.0	210.0	20	120	0.33	10
Gheri Langri_31253	Atal Jal	Piezometer	30.0374	76.4706	2024	8.37	565	312	134	38.09	9.45	39	5	2.6	117.3	87.52	52.11	0.25	14.8
Guldehra_31256	Atal Jal	Piezometer	29.957	76.5146	2023	7.81	658	400	210	60	17.82	60	35	0.0	190.0	20	100	0.23	5
Guldehra_31256	Atal Jal	Piezometer	29.957	76.5146	2024	7.6	598	368	155.6	45.02	10.5	46	6	0.5	139.5	90.4	59.93	0.29	17.3
Hamira Farm_31258	Atal Jal	Tubewell	30.0094	76.5552	2024	8.08	578	351.6	84.07	26.93	4.09	44	6	0.764	138	70.49	17.96	0.32	20.13
Harigarh Bhorakh_31240	Atal Jal	Piezometer	30.0429	76.6111	2023	8.88	608	370	190	50	15.09	60	30	0.0	170.0	16	100	0.66	5
Harigarh Bhorakh_31240	Atal Jal	Piezometer	30.0429	76.6111	2024	8.94	558	331	138.4	41.55	8.4	42	5	10.5	117.9	83.48	54.72	0.26	15.7
Helwa_31259	Atal Jal	Piezometer	29.9781	76.4912	2023	8.57	844	544	280	80	23.31	85	45	0.0	260.0	24	140	0.27	10
Helwa_31259	Atal Jal	Piezometer	29.9781	76.4912	2024	8.65	782	498	211.9	62.33	13.65	63	8	8.1	184.0	118.9	80.77	0.4	23.1
Ishaq_31260	CGWB	Tube Well	30.0167	76.4917	2015	8.25	860	ND	102.1	16.4	14.9	160.0	5.6	0.0	404.6	65.0	34.7	1.20	1.91
Ishaq_31260	CGWB	Tube Well	30.0167	76.4917	2016	8.48	830	ND	132.7	24.5	17.4	150.0	5.2	48.0	268.5	98.0	34.7	1.60	2.74
Ishaq_31260	CGWB	Tube Well	30.0167	76.4917	2017	8.48	865	ND	155.0	25.0	22.0	160.0	4.0	67.0	306.0	90.0	28.0	1.10	0.94
Ishaq_31260	CGWB	Tube Well	30.0167	76.4917	2018	8.91	903	ND	110.0	16.0	17.0	178.0	2.2	60.0	281.0	80.0	50.0	1.30	5.66
Ishaq_31260	CGWB	Tube Well	30.0167	76.4917	2019	8.87	774	ND	100.0	8.0	20.0	145.0	1.0	48.0	305.0	8.6	50.0	0.12	0.62
Ishaq_31260	CGWB	Tube Well	30.0167	76.4917	2020	Sample not collected from this location													
Ishaq_31260	CGWB	Tube Well	30.0167	76.4917	2021	8.72	927	ND	197.3	35.1	26.6	124.0	4.4	60.0	292.9	27.0	46.7	1.12	32.00
Ishaq_31260	CGWB	Tube Well	30.0167	76.4917	2022	8.49	814	ND	150.0	16.0	27.0	153.0	3.2	60.0	397.0	0.0	35.0	1.13	5.30
Ishaq_31260	CGWB	Tube Well	30.0167	76.4917	2023	8.04	1456	ND	300.0	40.0	48.6	215.3	8.9	0.0	756.4	0.0	99.4	1.20	12.80
Ishaq_31260	CGWB	Tube Well	30.0167	76.4917	2024	8.56	925	0	120.1	8.016	24.32	146	6.5	60	256.3	28.82	63.81	1.4	1
Jakhawala_31261	Atal Jal	Piezometer	30.0831	76.5617	2023	8.08	992	672	350	90	28.8	105	55	0.0	320.0	32	170	0.68	10
Jakhawala_31261	Atal Jal	Piezometer	30.0831	76.5617	2024	8.02	865	533	224.8	65.79	14.7	67	8	2.0	202.0	139.3	85.98	0.42	24.7
Jhinwhaheri_31263	Atal Jal	Pizeometer	29.9926	76.5463	2024	7.74	633	396	168.6	48.48	11.55	50	6	0.785	151.2	90.12	65.14	0.32	18.6
Julmat_31265	Atal Jal	Tubewell	30.0415	76.5536	2024	8	553	332	79.86	25.25	4.08	42	5	0.388	130.7	67.75	16.9	0.3	19.06
Jurasikalan_31264	Atal Jal	Piezometer	30.0277	76.5809	2023	7.86	860	573	300	80	23.32	90	45	0.0	270.0	28	150	0.43	10
Jurasikalan_31264	Atal Jal	Piezometer	30.0277	76.5809	2024	8.17	808	488	207.5	60.6	13.65	61	8	2.6	185.3	121.2	80.77	0.38	22.7
Jurasikhurd_31262	Atal Jal	Tubewell	30.0082	76.5831	2024	7.7	580	340.5	81.97	26.09	4.09	43	5	0.389	134	67	16.9	0.31	19.52
Kakrala Gujran_31266	Atal Jal	Piezometer	30.0325	76.4386	2023	8.52	877	498	260	70	20.57	80	40	0.0	230.0	24	130	0.43	10
Kakrala Gujran_31266	Atal Jal	Piezometer	30.0325	76.4386	2024	8.1	775	438	185.9	53.67	12.6	55	7	2.0	166.0	123.5	70.35	0.34	20.4
Kalsa_31268	Atal Jal	Piezometer	30.0571	76.5272	2023	8.04	1018	615	320	90	24.69	95	50	0.0	250.0	28	160	0.87	10
Kalsa_31268	Atal Jal	Piezometer	30.0571	76.5272	2024	8.22	952	535	224.8	65.79	14.7	67	8	3.2	200.8	142.7	88.59	0.43	24.8
Karah Sahib_31270	Atal Jal	Tubewell	30.0477	76.49	2024	7.99	476	280.5	67.25	21.04	3.57	35	4	6.182	104.2	56.34	13.73	0.25	16.25
Kheri Shishgran_31269	Atal Jal	Tubewell	29.9552	76.5359	2024	8.72	447	268.2	65.15	20.2	3.57	34	4	0.173	105.7	50.49	13.73	0.25	15.59
Madanpur_31273	Atal Jal	Piezometer	29.9088	76.5433	2023	8.15	745	451	230	60	17.83	70	35	0.0	210.0	20	120	0.23	10
Madanpur_31273	Atal Jal	Piezometer	29.9088	76.5433	2024	7.77	674	421	177.3	51.94	11.55	53	7	0.9	159.1	102.3	67.74	0.33	19.7
Magana_31271	Atal Jal	Piezometer	29.9571	76.4923	2023	8.37	594	401	210	60	17.82	65	35	0.0	190.0	20	100	0.32	5
Magana_31271	Atal Jal	Piezometer	29.9571	76.4923	2024	8.17	527	289	121.1	36.36	7.35	36	5	1.6	110.4	81.56	46.9	0.23	13.8
Malikpur	CGWB	Tube Well	30.0458	76.6333	2015	8.56	642	ND	163.3	20.4	27.3	88.0	6.3	70.2	238.0	18.0	17.4	0.35	2.80
Malikpur	CGWB	Tube Well	30.0458	76.6333	2016	8.65	598	ND	142.9	20.4	22.3	85.0	15.0	60.0	231.9	ND	27.8	0.61	17.00
Malikpur	CGWB	Tube Well	30.0458	76.6333	2017	8.1	515	ND	175.0	33.0	22.0	54.0	5.3	0.0	325.0	20.0	7.1	0.35	BDL
Malikpur	CGWB	Tube Well	30.0458	76.6333	2018	8.25	505	ND	160.0	24.0	24.0	61.0	2.6	0.0	293.0	12.0	28.0	0.24	0.20
Malikpur	CGWB	Tube Well	30.0458	76.6333	2019	Sample not collected from this location													
Malikpur	CGWB	Tube Well	30.0458	76.6333	2020	8.67	925	ND	250.2	52.1	29.2	112.0	14.0	48.0	195.3	47.0	92.2	0.24	97.00

Atal Bhujal Yojana - Block Hydrogeological Report

Gram Panchayat	Source	Type of well	Latitude	Longitude	Year	pH	EC	TDS	TH	Ca	Mg	Na	K	CO <sub>3</sub>	HCO <sub>3</sub>	SO <sub>4</sub>	Cl	F	NO <sub>3</sub>
Malikpur	CGWB	Tube Well	30.0458	76.6333	2021	8.8	713	ND	150.1	20.0	24.3	121.0	13.0	57.0	324.6	14.0	26.7	0.55	16.00
Malikpur	CGWB	Tube Well	30.0458	76.6333	2022	8.41	507	ND	120.0	16.0	19.5	82.0	8.4	24.0	268.0	0.0	21.0	0.61	11.00
Malikpur	CGWB	Tube Well	30.0458	76.6333	2023	Sample not collected from this location													
Malikpur	CGWB	Tube Well	30.0458	76.6333	2024	7.62	1198	0	400.3	24.05	82.69	95	8	Nil	463.8	48.03	92.17	0.94	40
Mohanpur_31274	Atal Jal	Piezometer	30.0442	76.5052	2023	8.56	693	385	200	50	16.46	60	30	0.0	180.0	20	100	0.34	5
Mohanpur_31274	Atal Jal	Piezometer	30.0442	76.5052	2024	8.65	632	387	164.3	48.48	10.5	49	6	6.2	141.8	95.21	62.53	0.31	18.2
Morthali_31272	Atal Jal	Tubewell	29.9988	76.5689	2024	8.89	470	290	69.36	21.88	3.58	37	5	4.406	109.9	53.79	14.79	0.26	16.76
Mukimpur_298007	Atal Jal	Piezometer	29.9686	76.6878	2023	8.07	679	434.6	222	69.02	12	49.1	15.6	0.0	196.0	35.5	121	0.32	31.2
Mukimpur_298007	Atal Jal	Piezometer	29.9686	76.6878	2024	8.36	614	356	151.3	43.28	10.5	45	6	2.9	133.0	93.29	57.32	0.28	16.8
Murtzapur_31275	Atal Jal	Tubewell	29.9705	76.6577	2024	8.56	542	339.6	81.97	26.09	4.09	43	5	1.498	132.5	64.17	16.9	0.31	19.46
Neemwala_31277	Atal Jal	Piezometer	30.0093	76.4666	2023	8.13	910	541	280	80	23.31	85	45	0.0	250.0	24	140	0.47	10
Neemwala_31277	Atal Jal	Piezometer	30.0093	76.4666	2024	8.29	877	510	216.2	62.33	14.7	64	8	3.6	192.4	127.9	83.38	0.4	23.6
Pehowa	CGWB	Dug Well	30.232	76.8334	2015	8.4	560	ND	204.2	36.8	27.3	36.0	3.5	35.1	178.5	5.0	41.7	0.34	0.34
Pehowa	CGWB	Dug Well	30.232	76.8334	2016	8.4	511	ND	214.4	20.4	39.7	32.0	6.3	36.0	231.9	25.0	6.9	0.46	0.46
Pehowa	CGWB	Dug Well	30.232	76.8334	2017	Sample not collected from this location													
Pehowa	CGWB	Dug Well	30.232	76.8334	2018	8.48	350	ND	120.0	20.0	17.0	37.0	1.1	36.0	134.0	ND	21.0	0.76	0.76
Pehowa	CGWB	Dug Well	30.232	76.8334	2019	8.93	766	ND	180.0	12.0	36.0	113.0	1.0	84.0	256.0	7.7	43.0	0.05	5.70
Pehowa	CGWB	Dug Well	30.232	76.8334	2020	8.52	1109	ND	210.2	52.1	19.5	160.0	18.0	48.0	158.7	97.0	184.3	0.30	26.00
Pehowa	CGWB	Dug Well	30.232	76.8334	2021	8.47	633	ND	230.1	21.9	42.6	67.0	3.6	36.0	122.0	108.0	66.6	0.30	0.40
Pehowa	CGWB	Dug Well	30.232	76.8334	2022	8.1	732	ND	224.0	21.0	41.7	71.0	6.1	0.0	238.0	72.0	71.0	0.42	0.60
Pehowa	CGWB	Dug Well	30.232	76.8334	2023	7.68	900	ND	400.0	20.0	85.1	42.0	6.1	0.0	414.8	86.4	35.5	0.63	0.65
Pehowa	CGWB	Dug Well	30.232	76.8334	2024	8.08	836	0	270.2	24.05	51.07	76	5	Nil	268.5	BDL	127.6	0.53	36
Ramgarh Rod_31278	Atal Jal	Piezometer	29.9947	76.4584	2023	8.26	845	485	250	70	19.21	75	40	0.0	230.0	24	130	0.34	10
Ramgarh Rod_31278	Atal Jal	Piezometer	29.9947	76.4584	2024	7.91	800	465	198.9	57.14	13.65	59	7	1.4	178.6	119.1	75.56	0.37	21.7
Ratangarh Kakrali_31267	Atal Jal	Piezometer	30.0198	76.4379	2023	8.38	1324	721	370	100	30.17	110	60	0.0	340.0	32	190	0.23	10
Ratangarh Kakrali_31267	Atal Jal	Piezometer	30.0198	76.4379	2024	8.47	1235	767	324.3	95.23	21	97	12	8.2	287.9	184.8	125.1	0.61	35.1
Raun_31279	Atal Jal	Piezometer	29.9317	76.639	2023	8.19	564	387	200	50	15.09	60	30	0.0	180.0	20	100	0.23	5
Raun_31279	Atal Jal	Piezometer	29.9317	76.639	2024	7.81	543	327	138.4	39.82	9.45	41	5	0.8	123.2	77.42	54.72	0.26	15.5
Saina Khurd_31288	Atal Jal	Pizeometer	30.0175	76.5456	2024	7.94	610	350	147	43.28	9.45	44	5	1.113	134.9	91.56	57.32	0.28	16.5
Sainsa_31281	Atal Jal	Piezometer	30.0006	76.6466	2023	8.05	549	340.4	172.7	53.24	9.64	38.4	12.2	0.0	154.0	27.8	95	0.45	24.4
Sainsa_31281	Atal Jal	Piezometer	30.0006	76.6466	2024	8.18	521	304	129.7	38.09	8.4	38	5	1.7	114.3	75.4	49.51	0.24	14.5
Sandola_31282	Atal Jal	Piezometer	29.9584	76.6206	2023	8.04	821	513	270	70	21.94	80	40	0.0	240.0	24	130	0.54	10
Sandola_31282	Atal Jal	Piezometer	29.9584	76.6206	2024	8.16	725	435	185.9	53.67	12.6	55	7	2.3	165.7	115.8	70.35	0.34	20.3
Sandoli_31283	Atal Jal	Tubewell	29.9561	76.6444	2024	8.16	530	297.5	71.46	22.72	3.58	37	5	4.229	113	65.3	14.79	0.27	17.17
Saraswati Khera Colony_298012	Atal Jal	Piezometer	29.996	76.5977	2023	7.81	889	567	290	80	23.32	90	45	0.0	270.0	28	150	0.34	10
Saraswati Khera Colony_298012	Atal Jal	Piezometer	29.996	76.5977	2024	7.77	794	487	207.5	60.6	13.65	61	8	1.0	186.9	125	80.77	0.38	22.6
Sarsa_31285	Atal Jal	Tubewell	29.9514	76.6652	2024	8.55	484	302.8	73.56	22.72	4.09	38	5	0.029	119.5	55.68	14.79	0.28	17.48
Satora_31286	Atal Jal	Tubewell	29.9839	76.5381	2024	7.36	541	306.2	73.56	23.57	3.57	39	5	1.32	119.5	67.09	14.79	0.28	17.63
Seonsar_31290	Atal Jal	Piezometer	29.9952	76.4787	2023	8.6	821	538	280	80	21.95	85	45	0.0	250.0	24	140	0.23	10
Seonsar_31290	Atal Jal	Piezometer	29.9952	76.4787	2024	8.89	779	449	190.2	55.4	12.6	57	7	12.6	159.9	115.8	72.96	0.35	20.9
Shahapur_31280	Atal Jal	Piezometer	30.036	76.5503	2023	8.35	1000	706	370	100	30.17	110	55	0.0	330.0	32	180	0.65	10
Shahapur_31280	Atal Jal	Piezometer	30.036	76.5503	2024	8.14	888	557	237.8	69.25	15.75	70	9	2.8	213.2	140.2	91.2	0.44	25.7
Singapura_31289	Atal Jal	Pizeometer	29.9447	76.7008	2024	7.61	874	550	233.5	67.52	15.75	69	9	0.812	211.2	137.7	91.2	0.43	25.4
Surmi_31291	Atal Jal	Piezometer	30.0118	76.6995	2023	8.37	591	313	160	40	12.35	50	25	0.0	150.0	16	80	0.23	5
Surmi_31291	Atal Jal	Piezometer	30.0118	76.6995	2024	8.4	548	332	142.7	41.55	9.45	42	5	3.0	124.9	81.17	54.72	0.26	15.7
Talheri_31292	Atal Jal	Piezometer	30.0268	76.6446	2023	8.45	508	283	150	40	12.34	45	25	0.0	130.0	12	70	0.21	5

Atal Bhujal Yojana - Block Hydrogeological Report

Gram Panchayat	Source	Type of well	Latitude	Longitude	Year	pH	EC	TDS	TH	Ca	Mg	Na	K	CO <sub>3</sub>	HCO <sub>3</sub>	SO <sub>4</sub>	Cl	F	NO <sub>3</sub>
Talheri_31292	Atal Jal	Piezometer	30.0268	76.6446	2024	8.62	454	255	108.1	31.16	7.35	32	4	3.9	96.0	69.73	41.69	0.2	12.3
Thana_31293	CGWB	Tube Well	29.9095	76.5866	2015	8.8	1430	ND	204.2	28.6	32.2	285.0	7.6	105.3	654.4	70.0	27.8	0.42	0.42
Thana_31293	CGWB	Tube Well	29.9095	76.5866	2016	8.75	1100	ND	153.1	40.9	12.4	215.0	7.6	108.0	463.8	13.0	27.8	0.87	0.87
Thana_31293	CGWB	Tube Well	29.9095	76.5866	2017	8.27	912	ND	237.0	45.0	30.0	130.0	5.5	0.0	533.0	30.0	28.0	0.60	0.60
Thana_31293	CGWB	Tube Well	29.9095	76.5866	2018	8.94	1756	ND	200.0	8.0	44.0	369.0	16.0	96.0	537.0	264.0	85.0	1.10	1.10
Thana_31293	CGWB	Tube Well	29.9095	76.5866	2019	8.57	530	ND	190.0	16.0	36.0	51.0	2.0	24.0	159.0	6.2	70.0	0.05	28.00
Thana_31293	CGWB	Tube Well	29.9095	76.5866	2020	Sample not collected from this location													
Thana_31293	CGWB	Tube Well	29.9095	76.5866	2021	8.79	970	ND	241.1	17.6	47.9	132.0	4.1	60.0	390.5	31.0	53.3	0.47	13.00
Thana_31293	CGWB	Tube Well	29.9095	76.5866	2022	8.35	944	ND	252.0	19.0	49.7	112.0	6.1	21.0	394.0	49.0	42.0	0.52	18.00
Thana_31293	CGWB	Tube Well	29.9095	76.5866	2023	8.21	943	ND	330.0	20.0	68.1	100.0	5.6	0.0	427.0	81.6	71.0	0.58	13.96
Thana_31293	CGWB	Tube Well	29.9095	76.5866	2024	8.1	938	0	240.2	12.02	51.07	124	5	Nil	524.8	BDL	42.54	1.2	14
Themalbora_31294	Atal Jal	Piezometer	29.9181	76.5703	2023	8.12	1112	659	340	90	26.07	105	55	0.0	310.0	32	170	0.45	10
Themalbora_31294	Atal Jal	Piezometer	29.9181	76.5703	2024	8.29	1035	615	259.4	76.18	16.8	77	10	4.3	231.7	155.6	101.6	0.48	28.3
Tikri_31295	Atal Jal	Tubewell	30.0263	76.6122	2024	7.09	540	315.2	75.66	23.57	4.08	40	5	4.683	119.5	67.38	15.85	0.29	18.14
Tyukar_298006	Atal Jal	Tubewell	30.0674	76.5549	2024	8.76	562	309.3	75.66	23.57	4.08	39	5	0.038	122.1	64.92	15.85	0.29	17.78

Name of District	Name of Block	Source	Name of village/ OW data	Latitude	Longitude	EC June 2020	EC June-2021	EC June-2022	EC June-2023	EC June-2024
Kurukshetra_68	Pehowa_519	SGWB	Adhoya	30.1867	77.035	550	1000	800	800	1000
Kurukshetra_68	Pehowa_519	Atal Jal	Adhoya_31231	30.0812	76.4846	ND	ND	ND	ND	478
Kurukshetra_68	Pehowa_519	Atal Jal	Arnai_31232	30.0055	76.6245	ND	ND	ND	ND	448
Kurukshetra_68	Pehowa_519	Atal Jal	Arnaicha_31233	29.9408	76.5908	ND	ND	ND	608	580
Kurukshetra_68	Pehowa_519	Atal Jal	Asmanpur_31234	29.9514	76.5903	ND	ND	ND	ND	1025
Kurukshetra_68	Pehowa_519	Atal Jal	Bakhli Khurd_31236	30.0004	76.5202	ND	ND	ND	ND	472
Kurukshetra_68	Pehowa_519	Atal Jal	Bakhli_31235	30.0185	76.5147	ND	ND	ND	ND	472
Kurukshetra_68	Pehowa_519	SGWB	Batheri (DRY)	29.9234	76.6086	1150	1000	1100	1000	800
Kurukshetra_68	Pehowa_519	Atal Jal	Batheri_31237	29.9236	76.6086	ND	ND	ND	1051	982
Kurukshetra_68	Pehowa_519	Atal Jal	Bhoda_31243	30.0552	76.5815	ND	ND	ND	614	582
Kurukshetra_68	Pehowa_519	Atal Jal	Bhor Saidan_31239	29.9605	76.7004	ND	ND	ND	510	472
Kurukshetra_68	Pehowa_519	SGWB	BhorSaidan	29.9604	76.6917	300	500	500	600	600
Kurukshetra_68	Pehowa_519	Atal Jal	Bibipur Kalan_31241	29.9907	76.6641	ND	ND	ND	566	522
Kurukshetra_68	Pehowa_519	Atal Jal	Biloch Pura_31242	29.9844	76.6199	ND	ND	ND	490	458
Kurukshetra_68	Pehowa_519	SGWB	Chanalheri	30.0222	76.6645	750	800	700	1200	1000
Kurukshetra_68	Pehowa_519	Atal Jal	Chanalheri_31245	30.0229	76.6639	ND	ND	ND	576	510
Kurukshetra_68	Pehowa_519	Atal Jal	Chhajapur_31247	30.0139	76.6393	ND	ND	ND	586	530
Kurukshetra_68	Pehowa_519	Atal Jal	Chhaloin_31246	29.9936	76.7122	ND	ND	ND	595	541
Kurukshetra_68	Pehowa_519	Atal Jal	Chuniya Farm_265631	29.9725	76.6401	ND	ND	ND	ND	554
Kurukshetra_68	Pehowa_519	Atal Jal	Dera Nanakpura_31276	29.9398	76.62	ND	ND	ND	ND	1089
Kurukshetra_68	Pehowa_519	Atal Jal	Derafatehsingh_31248	29.9682	76.5705	ND	ND	ND	ND	604
Kurukshetra_68	Pehowa_519	Atal Jal	Dhani Rampura_31249	29.9962	76.6133	ND	ND	ND	428	395
Kurukshetra_68	Pehowa_519	Atal Jal	Dhoolgarh_31250	29.965	76.5004	ND	ND	ND	457	423
Kurukshetra_68	Pehowa_519	SGWB	Diwana	30.0587	76.4663	550	700	700	1000	800
Kurukshetra_68	Pehowa_519	Atal Jal	Diwana_31251	30.0583	76.4652	ND	ND	ND	769	729
Kurukshetra_68	Pehowa_519	SGWB	Galedwa	29.9727	76.5596	500	700	600	800	700
Kurukshetra_68	Pehowa_519	Atal Jal	Galedwa_31252	29.9776	76.5587	ND	ND	ND	ND	541
Kurukshetra_68	Pehowa_519	Atal Jal	Garhi Rodan_31254	29.9678	76.7192	ND	ND	ND	ND	583
Kurukshetra_68	Pehowa_519	SGWB	GarhiRoran	29.9623	76.7314	350	500	500	800	800

Name of District	Name of Block	Source	Name of village/ OW data	Latitude	Longitude	EC June 2020	EC June-2021	EC June-2022	EC June-2023	EC June-2024
Kurukshetra_68	Pehowa_519	Atal Jal	Garisingha_31255	29.9526	76.6799	ND	ND	ND	ND	524
Kurukshetra_68	Pehowa_519	Atal Jal	Gheri Langri_31253	30.0374	76.4706	ND	ND	ND	637	565
Kurukshetra_68	Pehowa_519	Atal Jal	Guldehra_31256	29.957	76.5146	ND	ND	ND	658	598
Kurukshetra_68	Pehowa_519	SGWB	GumthalaGarhu	29.9419	76.5535	750	1400	1200	1300	1100
Kurukshetra_68	Pehowa_519	Atal Jal	Hamira Farm_31258	30.0094	76.5552	ND	ND	ND	ND	566
Kurukshetra_68	Pehowa_519	Atal Jal	Harigarh Bhorakh_31240	30.0429	76.6111	ND	ND	ND	608	558
Kurukshetra_68	Pehowa_519	SGWB	Helwa	29.9713	76.4948	400	600	600	700	700
Kurukshetra_68	Pehowa_519	Atal Jal	Helwa_31259	29.9781	76.4912	ND	ND	ND	844	782
Kurukshetra_68	Pehowa_519	Atal Jal	Jakhawala_31261	30.0831	76.5617	ND	ND	ND	992	865
Kurukshetra_68	Pehowa_519	Atal Jal	Jhinwhaheri_31263	29.9926	76.5463	ND	ND	ND	ND	633
Kurukshetra_68	Pehowa_519	Atal Jal	Julmat_31265	30.0415	76.5536	ND	ND	ND	ND	550
Kurukshetra_68	Pehowa_519	Atal Jal	Jurasikalan_31264	30.0277	76.5809	ND	ND	ND	860	808
Kurukshetra_68	Pehowa_519	SGWB	Jurasikhurd	30.0119	76.5805	400	500	500	600	900
Kurukshetra_68	Pehowa_519	Atal Jal	Jurasikhurd_31262	30.0082	76.5831	ND	ND	ND	ND	574
Kurukshetra_68	Pehowa_519	Atal Jal	Kakrala Gujran_31266	30.0325	76.4386	ND	ND	ND	877	775
Kurukshetra_68	Pehowa_519	SGWB	Kakrala PF Rep.	30.0336	76.4405	1100	1200	1400	1200	1500
Kurukshetra_68	Pehowa_519	Atal Jal	Kalsa_31268	30.0571	76.5272	ND	ND	ND	1018	952
Kurukshetra_68	Pehowa_519	Atal Jal	Karah Sahib_31270	30.0477	76.49	ND	ND	ND	ND	503
Kurukshetra_68	Pehowa_519	SGWB	Karaha Sahib	30.0484	76.4933	550	700	700	800	1000
Kurukshetra_68	Pehowa_519	Atal Jal	Kheri Shishgran_31269	29.9552	76.5359	ND	ND	ND	ND	415
Kurukshetra_68	Pehowa_519	Atal Jal	Madanpur_31273	29.9088	76.5433	ND	ND	ND	745	674
Kurukshetra_68	Pehowa_519	Atal Jal	Magana_31271	29.9571	76.4923	ND	ND	ND	594	527
Kurukshetra_68	Pehowa_519	SGWB	Mangna	29.9561	76.4939	400	600	500	600	700
Kurukshetra_68	Pehowa_519	Atal Jal	Mohanpur_31274	30.0442	76.5052	ND	ND	ND	693	632
Kurukshetra_68	Pehowa_519	Atal Jal	Morthali_31272	29.9988	76.5689	ND	ND	ND	ND	453
Kurukshetra_68	Pehowa_519	Atal Jal	Mukimpur_298007	29.9686	76.6878	ND	ND	ND	679	614
Kurukshetra_68	Pehowa_519	SGWB	Murtzapur	29.9821	76.6526	400	1500	1300	1100	1000
Kurukshetra_68	Pehowa_519	Atal Jal	Murtzapur_31275	29.9705	76.6577	ND	ND	ND	ND	557
Kurukshetra_68	Pehowa_519	Atal Jal	Neemwala_31277	30.0093	76.4666	ND	ND	ND	910	877
Kurukshetra_68	Pehowa_519	SGWB	Pehowa	29.9759	76.58	350	500	500	900	800
Kurukshetra_68	Pehowa_519	SGWB	Ram GarhRor	29.9897	76.4484	1050	800	900	1100	1000
Kurukshetra_68	Pehowa_519	Atal Jal	Ramgarh Rod_31278	29.9947	76.4584	ND	ND	ND	845	800
Kurukshetra_68	Pehowa_519	Atal Jal	Ratangarh Kakrali_31267	30.0198	76.4379	ND	ND	ND	1324	1235
Kurukshetra_68	Pehowa_519	Atal Jal	Raun_31279	29.9317	76.639	ND	ND	ND	564	543
Kurukshetra_68	Pehowa_519	Atal Jal	Saina Khurd_31288	30.0175	76.5456	ND	ND	ND	ND	610
Kurukshetra_68	Pehowa_519	SGWB	SainaSaida	30.0163	76.5477	450	800	600	600	800
Kurukshetra_68	Pehowa_519	Atal Jal	Sainsa_31281	30.0006	76.6466	ND	ND	ND	549	521
Kurukshetra_68	Pehowa_519	SGWB	Sandhola Reported	29.9555	76.6202	750	1100	900	1000	900
Kurukshetra_68	Pehowa_519	Atal Jal	Sandola_31282	29.9584	76.6206	ND	ND	ND	821	725
Kurukshetra_68	Pehowa_519	Atal Jal	Sandoli_31283	29.9561	76.6444	ND	ND	ND	ND	538
Kurukshetra_68	Pehowa_519	Atal Jal	Saraswati Khera Colony_298012	29.996	76.5977	ND	ND	ND	889	794
Kurukshetra_68	Pehowa_519	SGWB	Sarsa	29.9448	76.6615	450	700	600	900	900
Kurukshetra_68	Pehowa_519	Atal Jal	Sarsa_31285	29.9514	76.6652	ND	ND	ND	ND	488
Kurukshetra_68	Pehowa_519	Atal Jal	Satora_31286	29.9839	76.5381	ND	ND	ND	ND	548
Kurukshetra_68	Pehowa_519	Atal Jal	Seonsar_31290	29.9952	76.4787	ND	ND	ND	821	779
Kurukshetra_68	Pehowa_519	Atal Jal	Shahapur_31280	30.036	76.5503	ND	ND	ND	1000	888

Atal Bhujal Yojana - Block Hydrogeological Report

Name of District	Name of Block	Source	Name of village/ OW data	Latitude	Longitude	EC June 2020	EC June-2021	EC June-2022	EC June-2023	EC June-2024
Kurukshetra_68	Pehowa_519	Atal Jal	Singpura_31289	29.9447	76.7008	ND	ND	ND	ND	874
Kurukshetra_68	Pehowa_519	SGWB	Surmi	30.0101	76.6932	500	800	800	1000	900
Kurukshetra_68	Pehowa_519	Atal Jal	Surmi_31291	30.0118	76.6995	ND	ND	ND	591	548
Kurukshetra_68	Pehowa_519	Atal Jal	Talheri_31292	30.0268	76.6446	ND	ND	ND	508	454
Kurukshetra_68	Pehowa_519	SGWB	Teokar	30.0684	76.5582	400	500	500	700	800
Kurukshetra_68	Pehowa_519	SGWB	Thana	29.9201	76.4989	400	500	500	700	1500
Kurukshetra_68	Pehowa_519	Atal Jal	Themalbora_31294	29.9181	76.5703	ND	ND	ND	1112	1035
Kurukshetra_68	Pehowa_519	Atal Jal	Tikri_31295	30.0263	76.6122	ND	ND	ND	ND	569
Kurukshetra_68	Pehowa_519	Atal Jal	Tyukar_298006	30.0674	76.5549	ND	ND	ND	ND	524
Kurukshetra_68	Pehowa_519	SGWB	Urnai	30.0074	76.6254	350	800	700	900	800