

ATAL BHUJAL YOJANA (AtalJal)

State : HARYANA

**Department : IRRIGATION & WATER
RESOURCE DEPARTMENT**

BLOCK : HATHIN

DISTRICT : PALWAL

YEAR : 2024-2025

*Towards partial fulfilment of requirements for Disbursement of
Incentive under DLI -1*

HYDROGEOLOGICAL REPORT

(YEAR: 2024-25)

STATE	:	HARYANA
DISTRICT	:	PALWAL
BLOCK/TALUK	:	HATHIN
BLOCK/TALUK HQs	:	HATHIN

A GENERAL INFORMATION					
1.	Geographical area (Ha)	:	35990		
2.	No. of Gram Panchayats	:	75		
3.	No. of towns	:	1		
4.	No. of villages	:	89		
5.	Population (2011)	:	Male	Female	Total
			133301	115714	249015
6.	Rainfall (mm)(2023)	:	Monsoon	Non-monsoon	Annual
			302	215	517
7.	River basin	:	Yamuna river basin		
8.	Major soil types	:	Tropical and Brown Soil		

B LAND USE (2023-24)			
1.	Forest area (Ha)	:	653.68
2.	Cultivable area (Ha)	:	31193
3.	Net sown area (Ha)	:	29482
4.	Gross cropped area (Ha)	:	52549

C CROPPING PATTERN (As in 2023-24)						
1.	Major crops grown	:	Kharif	Rabi	Summer	Perennial
			Paddy	Wheat	Pulses	NA
			Pulses	Mustard	Tomato	
			Sesame	Vegetable		
			Vegetable			
			Cotton			

D IRRIGATION FACILITIES (As in 2023-24)							
1.	Net irrigated area (Ha)	:	29494				
2.	Gross irrigated area (Ha)	:	45720				
3.	Area under irrigation (Ha) (Source-wise)	:	DW	BW/TW	Tanks/Ponds	Canals	Others
			0	28792	0	702	0

E GEOLOGY & HYDROGEOLOGY			
1.	Predominant rock type	:	Fine to medium grained Sand with Silt and Kankar
2.	Major geological formations	:	Older and Newer Alluvium
3.	Important water-bearing formations	:	Coarse grain sand
4.	Status of coverage under NAQUIM	:	Covered

F GROUND WATER CONDITIONS											
1	No. of wells used for Water Level (WL) monitoring.	:	Open wells				BW/TW/ PZ				
			CGWB	SGWB	Atal Jal	Total	CGWB	SGWB	Atal Jal	Total	
			2	21	40	63	4	5	84	93	
2	Monitoring mechanism (Nos.)	:	Manual			DWLR			Telemetry		
			CGWB	SGWB	Atal Jal	CGWB	SGWB	Atal Jal	CGWB	SGWB	Atal Jal
			6	26	98	0	0	26	0	0	26
3	Monitoring frequency	:	Agency	No. of times monitored/year							
			CGWB	2 times/year Pre and Post Monsoon							
			SGWB	2 times/year Pre and Post Monsoon							
			Atal Jal	2 times/year Pre and Post Monsoon							
4	Period of water level data availability.	:	Agency	Period of WL data availability (From - To)							
				From (year)			To (year)				
			CGWB	2015			2024				
			SGWB	2015			2024				
			Atal Jal	2023			2024				
5	Water level range (m.bgl)	:	Minimum/Village				Maximum/Village				
	Pre-monsoon (May - June 2024)		0.43/Maluka_28817				25.45/Ali Brahaman_28781				
	Post-monsoon (Oct/Nov 2024)		0.1/Maluka_28817				24.25/Ali Brahaman_28781				
6	Seasonal WL fluctuation range (m)	:	Minimum/ Village				Maximum/ Village				
			-1/Ali Meo_28782				8.16/Pahadpur_28830				

G GROUND WATER QUALITY											
1	No. of wells used for Water Quality (WQ) monitoring.	:	Open Wells				BW/TW/ PZ				
			CGWB	SGWB	Atal Jal	Total	CGWB	SGWB	Atal Jal	Total	
			4	20	0	24	2	5	73	80	
2	Monitoring frequency	:	Agency	No. of times monitored/year							
			CGWB	1 time/year							
			SGWB	1 time/year							
			Atal Jal	1 time/year							
3	Period of water quality data availability	:	Agency	Period of WQ data availability (Years)							
			CGWB	2015 to 2024							
			SGWB	2020 to 2024							
			Atal Jal	2023 to 2024							
4	Parameters analysed	:	Agency	Parameters Analysed							
			CGWB	pH,EC,TH,Ca,Mg,Na,K,CO ₃ ,HCO ₃ , SO ₄ ,Cl,F,NO ₃							
			SGWB	EC							
			Atal Jal	pH,EC,TDS,TH,Ca,Mg,Na,K,CO ₃ ,HCO ₃ , SO ₄ ,Cl,F,NO ₃							
5	Known ground water quality issues, if any	:	No Such Issue								

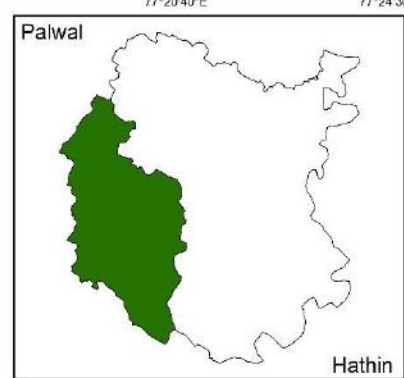
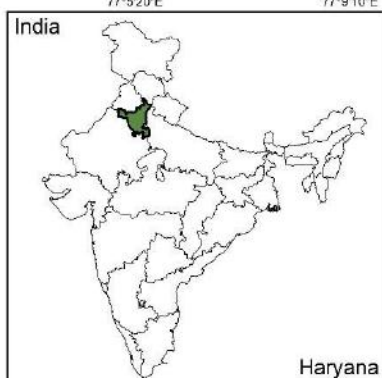
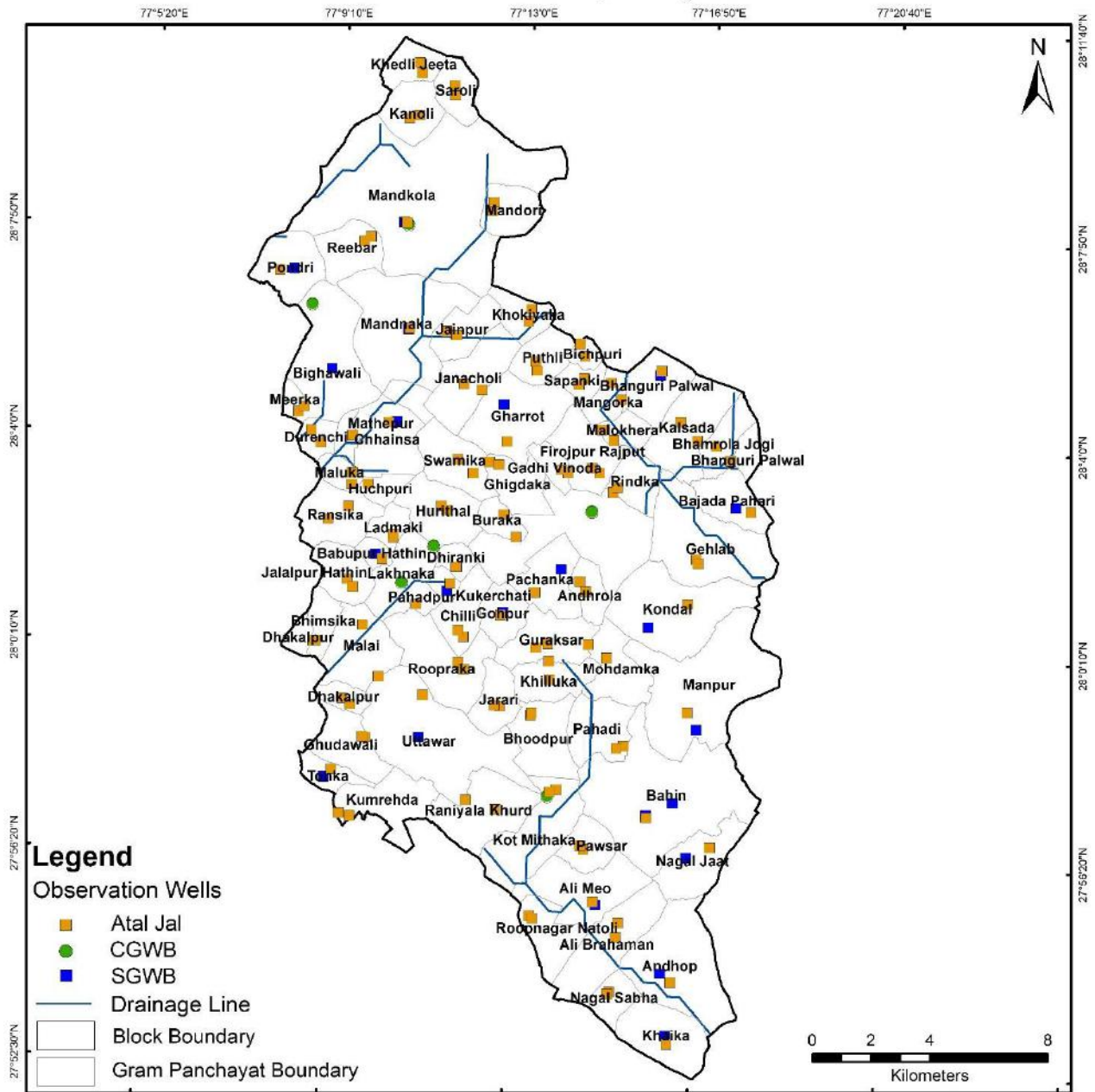
H. GROUND WATER RESOURCES									
1.	Latest assessment year	:	2023						
2.	Assessment Unit	:	Block						
3.	Annual extractable GW resource (ha.m)	:	7759.9						
4.	Current annual GW extraction (ha.m)	:	4867.4						
5.	Net GW availability for future use (ha.m)	:	2892.5						
6.	Stage of GW extraction (%)	:	64.84 %						
7.	Category of block/taluk/(2023)	:	Safe						
8.	Category of block/taluk/ in previous assessments		2023	2020	2017	2013	2011	2009	2004
			Safe	Safe	Critical	Over Exploited	Over Exploited	Critical	Safe

I WATER-RELATED SCHEMES			
1.	Schemes with a bearing on ground water, being implemented in the block / taluk.		
	Centrally Sponsored /Central Sector Schemes	i)	PMKSY
		ii)	MNREGA
		iii)	JJM
		iv)	RKVY
	State Schemes	i)	State Plan Scheme for providing assistance on adopting water saving technologies (2402)
		ii)	MPMV

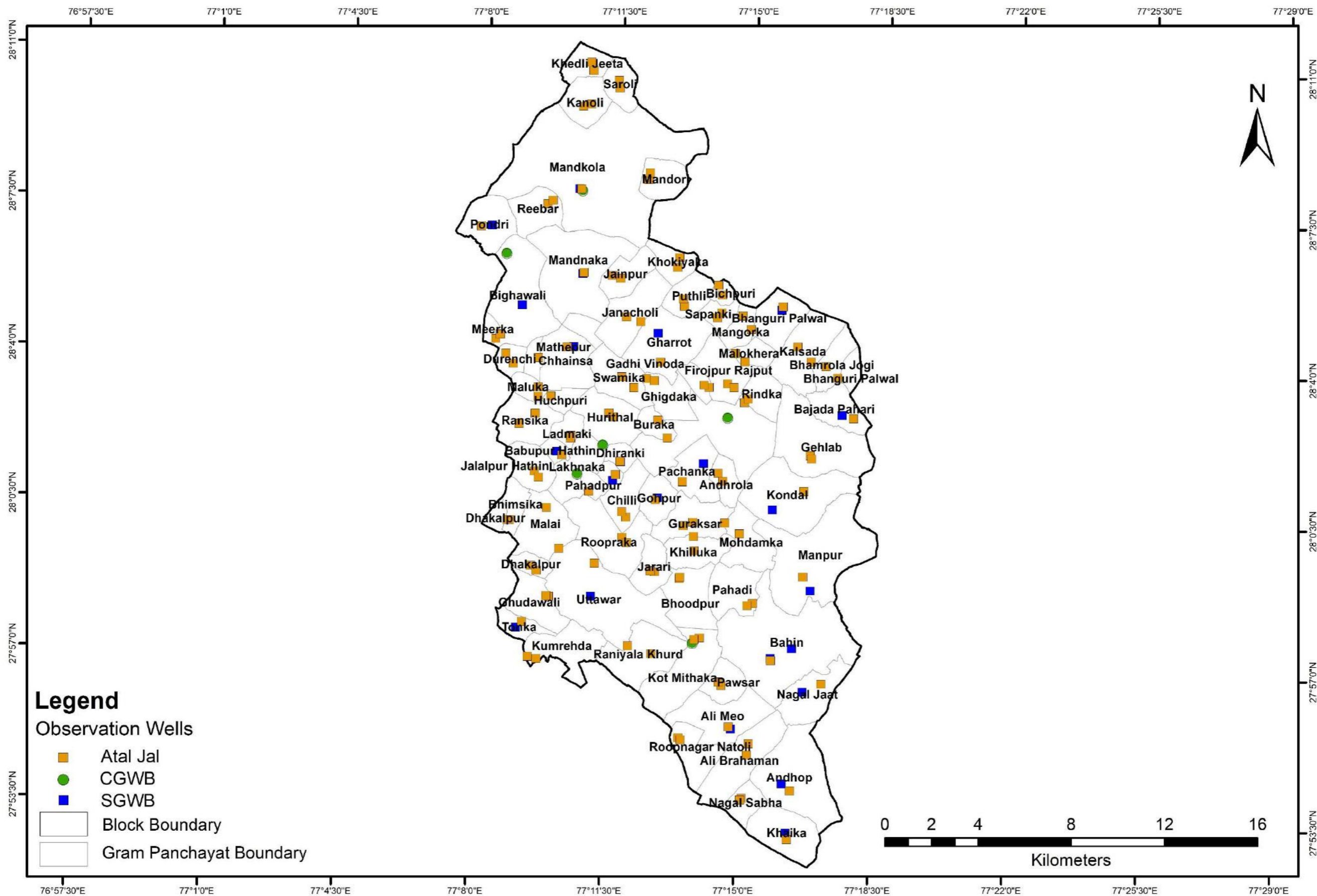
J GROUND WATER RELATED ISSUES		
1.	Ground water related issues of the block/	
	i) Issues related to GW availability	: Sustainability issues, over exploitation of ground water
	ii) Issues related to GW quality	: The shallow ground water of the block is alkaline in nature and is moderately to highly saline. It is found that more than half of the ground waters are not suitable for drinking purposes mainly due to fluoride content that exceeds the maximum permissible limit of 1.5mg/l. These waters are not suitable for customary irrigation as they may cause salinity and sodium hazards.
	iii) Other issues if any.	:

K ANNEXURES	
I	Basic data of observation wells – Attached
II.	Historical water level data – Attached
III.	Historical water quality data – Attached

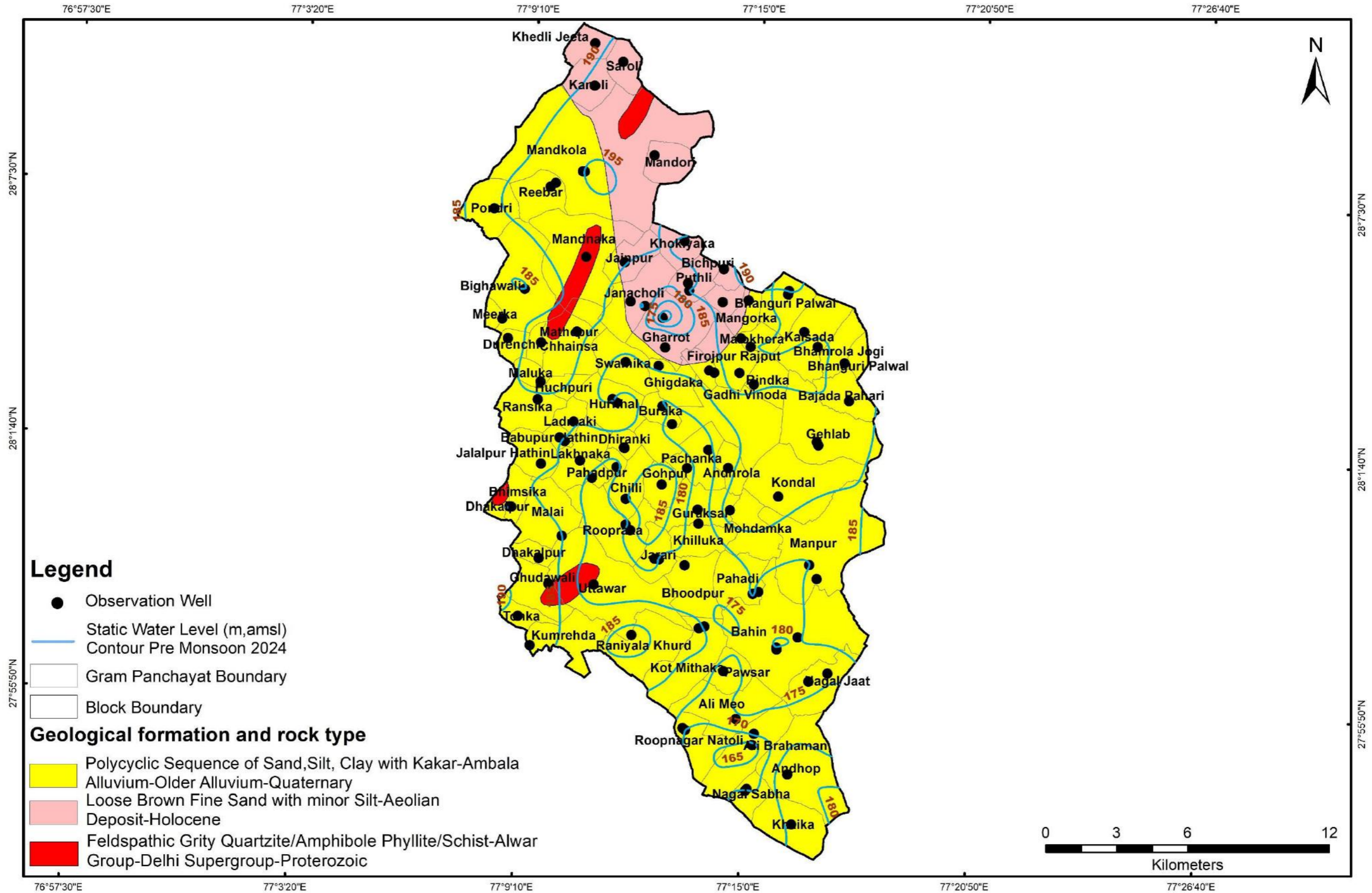
Location Map of Block- Hathin, District- Palwal, Haryana



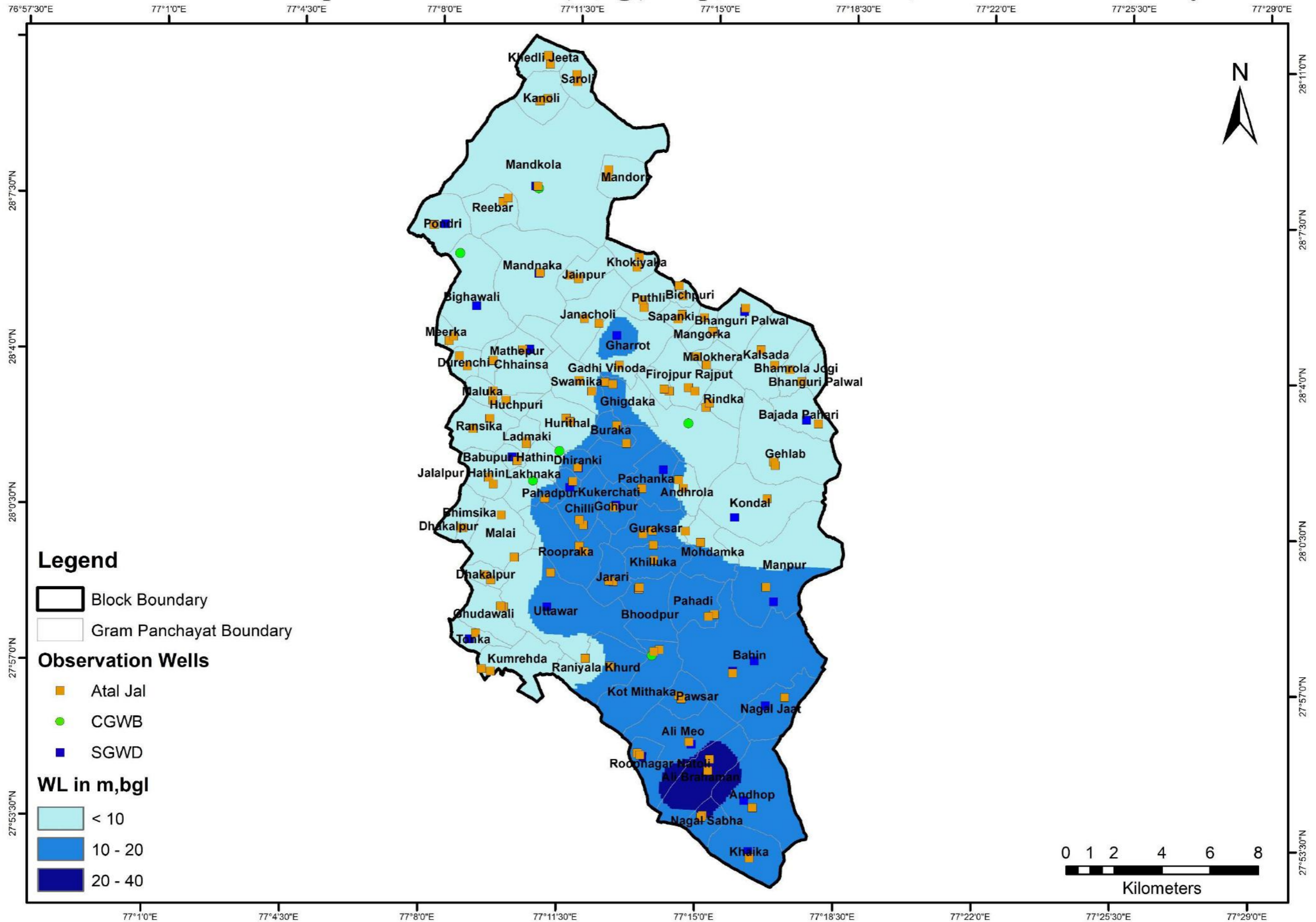
Location of Observation Wells for Monitoring Water Levels and Water Quality, Block- Hathin, District- Palwal, Haryana



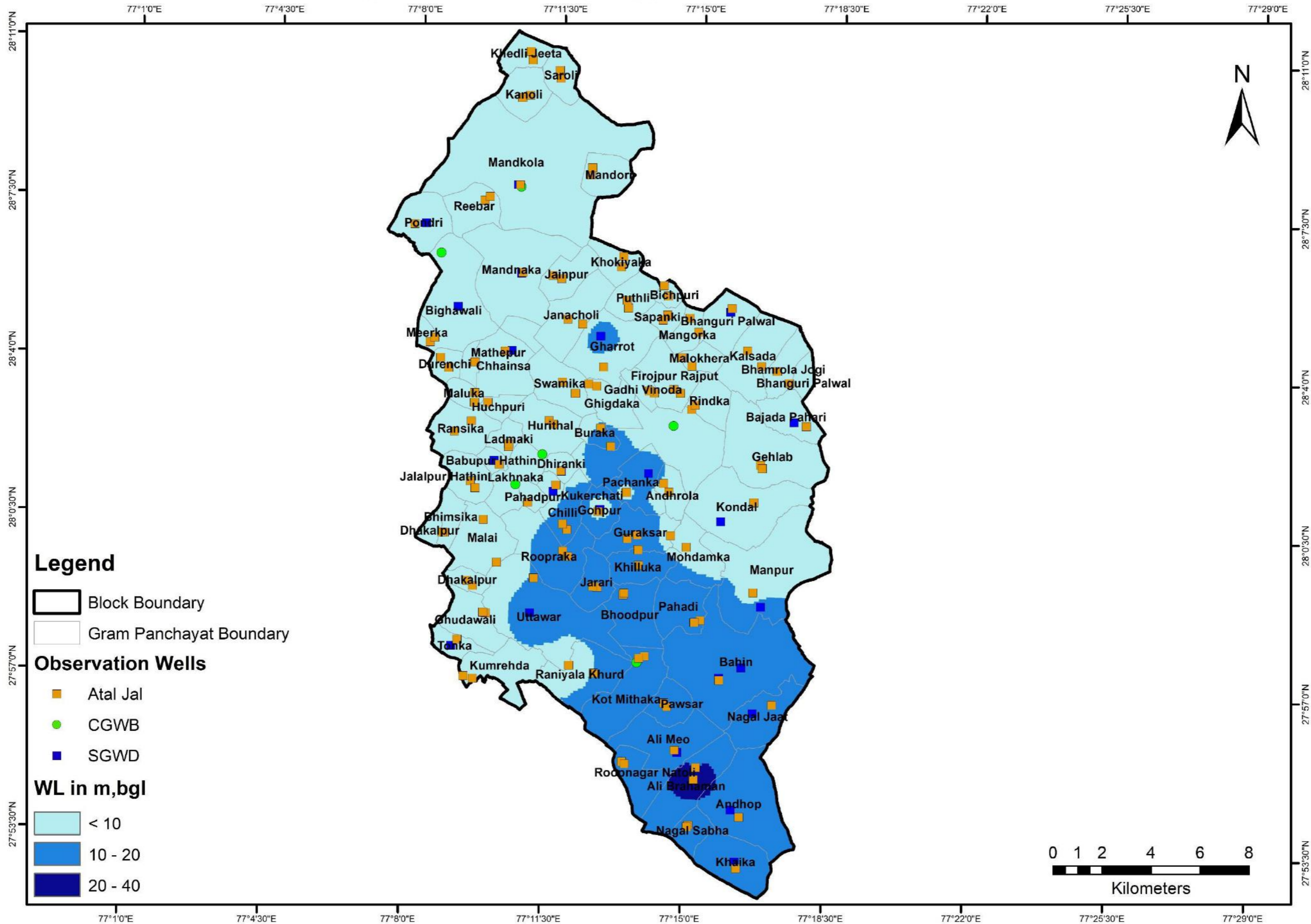
Hydrogeological Map, Block- Hathin, District- Palwal, Haryana



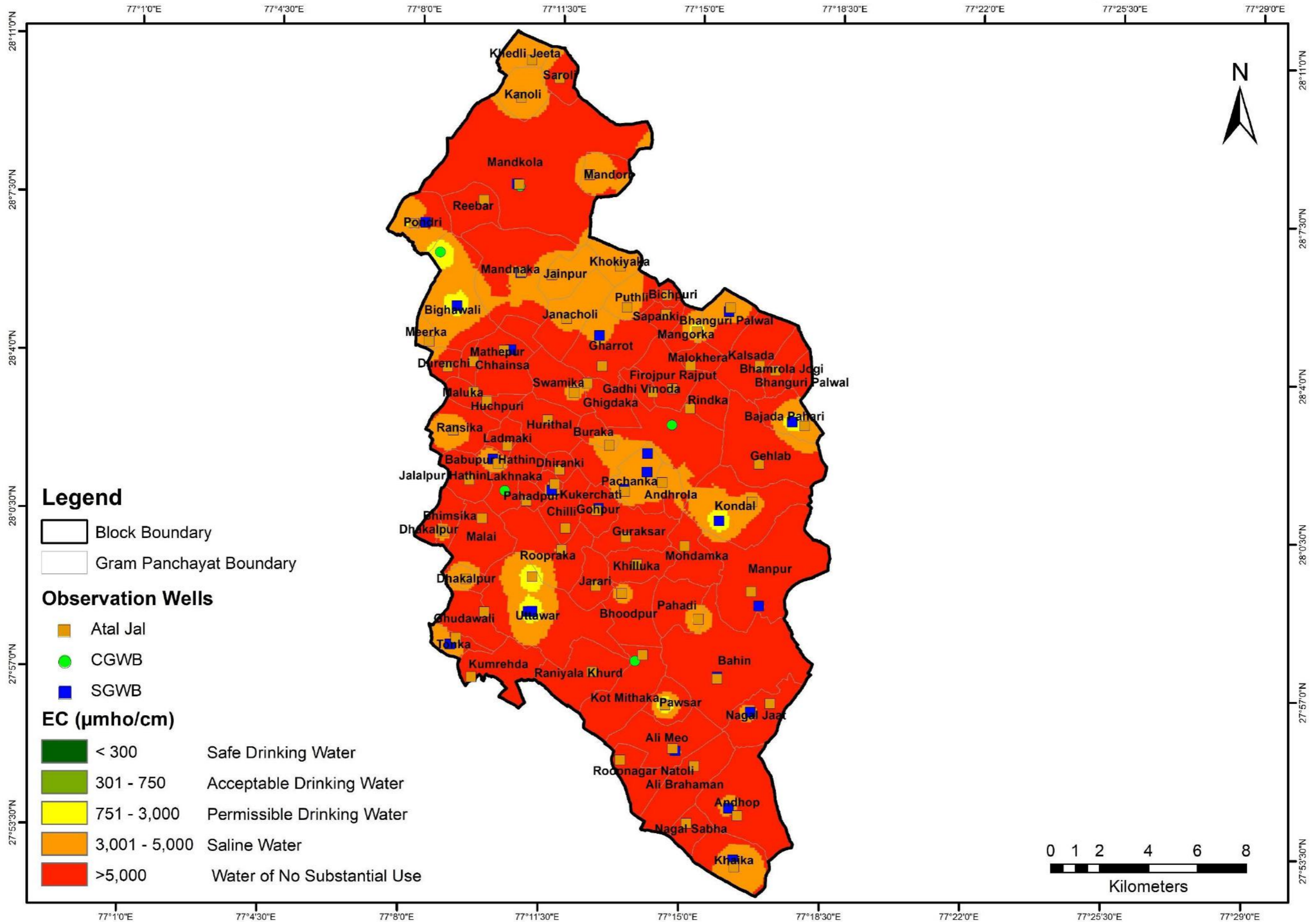
Pre Monsoon 2024 Depth to Water Level (m,bgl) Map, Block - Hathin, District - Palwal, Haryana



Post Monsoon 2024 Depth to Water Level (m,bgl) Map, Block - Hathin, District - Palwal, Haryana



Electrical Conductivity of Groundwater-2024, Block - Hathin, District - Palwal, Haryana



ANNEXURE: I
BASIC DATA OF MONITORING WELLS

State	Haryana			District	Palwal			Block	Hathin						
S.No	Well ID	Gram Panchayat	Name of the village	Site Name	Latitude	Longitude	Type of Well	Reduced Level	Aquifer Type/Lithology	Height of Measuring (m, agl)	Depth (m,bgl)	Diameter (m)	Purpose of Monitoring (WL/WQ)	Monitoring Mechanism	Agency
1.	HR_GW_737	Ali Brahaman_28781	Ali Brahman	Govt Primary School, Ali Brahman	27.9203	77.2550	Piezometer	219	Trans-Yamuna Alluvial	0.50	48	0.10	Both	Telemetric	Atal Jal
2.	GWL-06-619-00466-00028781-002	Ali Brahaman_28781	Ali Brahman	Govt Well	27.9159	77.2543	Dug Well	189	Trans-Yamuna Alluvial	1.00	33	2.00	WL	Manual	Atal Jal-Private
3.	PAL_HAT_AMO_1	Ali Meo_28782	Ali Meo	Irfan	27.9265	77.2461	Tube Well	189	Alluvial	0.21	18	0.13	WQ	Manual	Atal Jal
4.	PAL_HAT_AND_1	Andhop_28783	Andhop	Ravi	27.9025	77.2737	Bore Well	189	Alluvial	0.52	18	0.16	WQ	Manual	Atal Jal
5.	GWL-06-619-00466-00028784-001	Andhrola_28784	Andhrola	Old Sarpanch House	28.0214	77.2405	Tube Well	193	Trans-Yamuna Alluvial	0.10	23	0.15	WL	Manual	Atal Jal-Private
6.	PAL_HAT_ALA_1	Andhrola_28784	Andhrola	Kayamudin	28.0245	77.2383	Tube Well	194	Alluvial	0.62	15	1.68	WQ	Manual	Atal Jal
7.	HR_GW_752	Babupur Hathin_28785	Babupur Hathin	Govt Primary School	28.0297	77.1699	Piezometer	221	Trans-Yamuna Alluvial	0.50	53	0.10	Both	Telemetric	Atal Jal
8.	HR_GW_738	Bahin_28786	Bahin	Govt Sr Sec School, Bahin	27.9527	77.2636	Piezometer	217	Trans-Yamuna Alluvial	0.50	59	0.10	Both	Telemetric	Atal Jal
9.	PAL_HAT_BAJ_1	Bajada Pahari_28787	Bajada Pahari	Hariom	28.0471	77.2967	Tube Well	194	Alluvial	0.53	18	1.03	WQ	Manual	Atal Jal
10.	GWL-06-619-00466-00028788-001	Bhamrola Jogi_28788	Bhamrola Jogi	Near Temple	28.0627	77.2892	Dug Well	192	Trans-Yamuna Alluvial	0.76	30	1.40	WL	Manual	Atal Jal-Private
11.	PAL_HAT_BHJ_1	Bhamrola Jogi_28788	Bhamrola Jogi	Ramlal	28.0671	77.2840	Hand Pump	196	Alluvial	0.25	19	0.37	WQ	Manual	Atal Jal
12.	HR_GW_695	Bhanguri Palwal_245700	Bhanguri Palwal	Govt Primary School	28.0897	77.2644	Piezometer	220	Trans-Yamuna Alluvial	0.50	60	0.10	Both	Telemetric	Atal Jal
13.	HR_GW_696	Bhimsika_28790	Bhimsika	Govt Middle School	28.0041	77.1479	Piezometer	218	Trans-Yamuna Alluvial	0.50	60	0.10	Both	Telemetric	Atal Jal
14.	GWL-06-619-00466-00028790-001	Bhimsika_28790	Bhimsika	Renta Well In Village	28.0041	77.1470	Dug Well	192	Trans-Yamuna Alluvial	0.50	35	3.00	WL	Manual	Atal Jal-Private
15.	GWL-06-619-00466-00265002-001	Bhoodpur_265002	Bhoodpur	Choti Masjid	27.9838	77.2231	Dug Well	193	Trans-Yamuna Alluvial	0.30	17	1.11	WL	Manual	Atal Jal-Private
16.	PAL_HAT_BHO_1	Bhoodpur_265002	Bhoodpur	Jakir	27.9832	77.2228	Tube Well	192	Alluvial	0.30	20	1.11	WQ	Manual	Atal Jal
17.	GWL-06-619-00466-00028791-001	Bichpuri_28791	Bichpuri	Mandir Ke Pass	28.0973	77.2360	Dug Well	195	Trans-Yamuna Alluvial	0.30	30	2.15	WL	Manual	Atal Jal-Private
18.	PAL_HAT_BIC_1	Bichpuri_28791	Bichpuri	Azad	28.0935	77.2379	Bore Well	195	Alluvial	0.65	24	1.14	WQ	Manual	Atal Jal
19.	HR_GW_684	Buraka_265003	Buraka	Govt Model High School	28.0375	77.2158	Piezometer	217	Trans-Yamuna Alluvial	0.50	60	0.10	Both	Telemetric	Atal Jal

Atal Bhujal Yojana - Block Hydrogeological Report

S.No	Well ID	Gram Panchayat	Name of the village	Site Name	Latitude	Longitude	Type of Well	Reduced Level	Aquifer Type/Lithology	Height of Measuring (m, agl)	Depth (m,bgl)	Diameter (m)	Purpose of Monitoring (WL/WQ)	Monitoring Mechanism	Agency
20.	GWL-06-619-00466-00265003-001	Buraka_265003	Buraka	Old Sarpanch	28.0443	77.2114	Bore Well	194	Trans-Yamuna Alluvial	0.90	22	0.15	WL	Manual	Atal Jal-Private
21.	PAL_HAT_CHA_1	Chhainsa_28792	Chainsa	Shiv Mandir	28.0715	77.1708	Tube Well	193	Alluvial	0.34	15	2.46	WQ	Manual	Atal Jal
22.	GWL-06-619-00466-00265331-001	Chilli_265331	Chilli	Sarpanch Ka Ghar	28.0084	77.1969	Bore Well	196	Trans-Yamuna Alluvial	0.30	18	0.20	WL	Manual	Atal Jal-Private
23.	PAL_HAT_CHI_1	Chilli_265331	Chilli	Jakriya	28.0064	77.1986	Tube Well	195	Alluvial	0.30	20	0.20	WQ	Manual	Atal Jal
24.	GWL-06-619-00466-00028793-001	Dhakalpur_28793	Dhakalpur	Maila Ka Kua	27.9848	77.1603	Dug Well	190	Trans-Yamuna Alluvial	0.10	12	2.44	WL	Manual	Atal Jal-Private
25.	PAL_HAT_DAK_1	Dhakalpur_28793	Dhakalpur	Majid	27.9866	77.1578	Bore Well	191	Alluvial	0.10	18	1.35	WQ	Manual	Atal Jal
26.	HR_GW_743	Dhiranki_28794	Dhiranki	Govt Middle School, Dhiranki	28.0280	77.1955	Piezometer	215	Trans-Yamuna Alluvial	0.50	60	0.10	Both	Telemetric	Atal Jal
27.	GWL-06-619-00466-00028795-001	Durenchi_28795	Durenchi	Near Ramp Mirka Road	28.0684	77.1441	Dug Well	188	Trans-Yamuna Alluvial	1.47	10	2.12	WL	Manual	Atal Jal-Private
28.	PAL_HAT_DUR_1	Durenchi_28795	Durenchi	Sahil	28.0647	77.1475	Tube Well	192	Alluvial	1.47	14	2.12	WQ	Manual	Atal Jal
29.	GWL-06-619-00466-00028796-001	Firojpur Rajput_28796	Firojpur Rajput	Mandir Ke Piche Wala Kua	28.0579	77.2441	Dug Well	197	Trans-Yamuna Alluvial	0.42	12	1.60	WL	Manual	Atal Jal-Private
30.	PAL_HAT_FER_1	Firojpur rajput_28796	Firojpur rajput	Govt.	28.0593	77.2413	Tube Well	193	Alluvial	0.38	25	1.79	WQ	Manual	Atal Jal
31.	HR_GW_744	Gadhi Vinoda_265049	Garhi Vinoda	Govt Primary School	28.0577	77.2332	Piezometer	204	Trans-Yamuna Alluvial	0.50	60	0.10	Both	Telemetric	Atal Jal
32.	GWL-06-619-00466-00265049-001	Gadhi Vinoda_265049	Gadhi Vinoda	Mandir Wala Kua	28.0584	77.2311	Dug Well	193	Trans-Yamuna Alluvial	0.70	15	2.30	WL	Manual	Atal Jal-Private
33.	HR_GW_697	Gehlab_28797	Gehlab	Govt Girl Middle School, Gehlab	28.0323	77.2783	Piezometer	218	Trans-Yamuna Alluvial	0.50	56	0.10	Both	Telemetric	Atal Jal
34.	GWL-06-619-00466-00028797-001	Gehlab_28797	Gehlab	Guru Ravi Dad Temple	28.0311	77.2790	Dug Well	191	Trans-Yamuna Alluvial	0.70	35	1.00	WL	Manual	Atal Jal-Private
35.	HR_GW_758	Gharrot_28798	Gharot	Govt Sr Sec School	28.0667	77.2118	Piezometer	213	Trans-Yamuna Alluvial	0.50	60	0.10	Both	Telemetric	Atal Jal
36.	GWL-06-619-00466-00028799-001	Ghigdaka_28799	Ghigdaka	Majid Wala Borewell	28.0596	77.2092	Bore Well	197	Trans-Yamuna Alluvial	0.60	24	0.20	WL	Manual	Atal Jal-Private
37.	PAL_HAT_GIG_1	Ghigdaka_28799	Ghigdaka	Surajpal	28.0603	77.2059	Tube Well	193	Alluvial	0.52	22	0.51	WQ	Manual	Atal Jal
38.	GWL-06-619-00466-00028802-001	Ghudawali_28802	Ghurawali	Badi Masjid	27.9751	77.1649	Dug Well	193	Trans-Yamuna Alluvial	1.00	16	1.21	WL	Manual	Atal Jal-Private
39.	PAL_PAL_GHU_1	Ghudawali_28802	Ghurawali	Sarpanch	27.9749	77.1660	Bore Well	192	Alluvial	0.48	20	1.01	WQ	Manual	Atal Jal
40.	PAL_HAT_GOH_1	Gohpur_28800	Gohpur	Ishraf	28.0135	77.2113	Tube Well	194	Alluvial	0.34	20	0.13	WQ	Manual	Atal Jal

Atal Bhujal Yojana - Block Hydrogeological Report

S.No	Well ID	Gram Panchayat	Name of the village	Site Name	Latitude	Longitude	Type of Well	Reduced Level	Aquifer Type/Lithology	Height of Measuring (m, agl)	Depth (m,bgl)	Diameter (m)	Purpose of Monitoring (WL/WQ)	Monitoring Mechanism	Agency
41.	GWL-06-619-00466-00028801-001	Guraksar_28801	Guraksar	Masjid	28.0052	77.2279	Dug Well	193	Trans-Yamuna Alluvial	0.70	18	1.60	WL	Manual	Atal Jal-Private
42.	PAL_HAT_GUR_1	Guraksar_28801	Guraksar	Hanif	28.0038	77.2238	Tube Well	191	Alluvial	0.31	20	0.39	WQ	Manual	Atal Jal
43.	PAL_HAT_HUC_1	Huchpuri_28803	Huchpuri	Sabid	28.0524	77.1643	Tube Well	192	Alluvial	0.47	15	2.48	WQ	Manual	Atal Jal
44.	HR_GW_746	Hurithal_28804	Hurithal	Govt High School	28.0464	77.1899	Piezometer	205	Trans-Yamuna Alluvial	0.50	59	0.10	Both	Telemetric	Atal Jal
45.	GWL-06-619-00466-00028804-001	Hurithal_28804	Hudithal	Near Mandir	28.0451	77.1918	Dug Well	197	Trans-Yamuna Alluvial	0.50	15	1.60	WL	Manual	Atal Jal-Private
46.	GWL-06-619-00466-00246072-001	Jainpur_246072	Jainpur	Talab Wala Kua	28.0988	77.1933	Dug Well	193	Trans-Yamuna Alluvial	0.20	12	1.90	WL	Manual	Atal Jal-Private
47.	PAL_HAT_JAI_1	Jainpur_246072	Jainpur	Pvt.	28.0998	77.1897	Hand Pump	193	Alluvial	0.20	15	1.90	WQ	Manual	Atal Jal
48.	GWL-06-619-00466-00028805-001	Jalalpur Hathin_28805	Jalalpur Hathin	Gola Wala Well	28.0208	77.1600	Dug Well	191	Trans-Yamuna Alluvial	0.20	20	3.00	WL	Manual	Atal Jal-Private
49.	PAL_HAT_JAL_1	Jalalpur Hathin_28805	Jalalpur	Shamsudin	28.0232	77.1580	Hand Pump	193	Alluvial	0.56	15	1.64	WQ	Manual	Atal Jal
50.	HR_GW_748	Janacholi_28806	Janacholi	Govt Middle School	28.0839	77.1964	Piezometer	200	Trans-Yamuna Alluvial	0.50	53	0.10	Both	Telemetric	Atal Jal
51.	GWL-06-619-00466-00028806-001	Janacholi_28806	Janacholi	Khet Wala Kua	28.0823	77.2026	Dug Well	196	Trans-Yamuna Alluvial	1.00	14	2.05	WL	Manual	Atal Jal-Private
52.	HR_GW_703	Jarari_28807	Jarari	Govt Middle School	27.9856	77.2119	Piezometer	217	Trans-Yamuna Alluvial	0.50	57	0.10	Both	Telemetric	Atal Jal
53.	GWL-06-619-00466-00028807-001	Jarari_28807	Jarari	Near Pond	27.9859	77.2101	Dug Well	197	Trans-Yamuna Alluvial	0.50	18	2.10	WL	Manual	Atal Jal-Private
54.	HR_GW_739	Kalsada_28808	Kalsada	Govt Primary School	28.0686	77.2774	Piezometer	202	Trans-Yamuna Alluvial	0.50	60	0.10	Both	Telemetric	Atal Jal
55.	GWL-06-619-00466-00028808-001	Kalsada_28808	Kalsada	Shiv Mandir	28.0742	77.2715	Dug Well	194	Trans-Yamuna Alluvial	0.70	30	2.30	WL	Manual	Atal Jal-Private
56.	GWL-06-619-00466-00028809-001	Kanoli_28809	Kanoli	Talab Wala Kua	28.1658	77.1780	Dug Well	193	Trans-Yamuna Alluvial	0.20	10	1.75	WL	Manual	Atal Jal-Private
57.	PAL_HAT_KAN_1	Kanoli_28809	Kanoli	Govt.	28.1649	77.1747	Hand Pump	193	Alluvial	0.61	20	1.67	WQ	Manual	Atal Jal
58.	PAL_HAT_KHA_1	Khaika_273402	Khaika	Sarfraz	27.8836	77.2729	Bore Well	190	Alluvial	0.13	25	0.14	WQ	Manual	Atal Jal
59.	GWL-06-619-00466-00265035-001	Khedli Jeeta_265035	Khedli Jeeta	Govt.School Wala Kua	28.1820	77.1777	Dug Well	191	Trans-Yamuna Alluvial	0.40	12	2.00	WL	Manual	Atal Jal-Private
60.	PAL_HAT_KHE_1	Khedli Jeeta_265035	Khedli Jeeta	Pvt.	28.1788	77.1786	Hand Pump	206	Alluvial	0.30	15	1.06	WQ	Manual	Atal Jal
61.	GWL-06-619-00466-00028811-001	Khilluka_28811	Khilukka	Sarpanch Ka Samar Sibal	27.9998	77.2285	Bore Well	191	Trans-Yamuna Alluvial	0.65	19	0.15	WL	Manual	Atal Jal-Private

Atal Bhujal Yojana - Block Hydrogeological Report

S.No	Well ID	Gram Panchayat	Name of the village	Site Name	Latitude	Longitude	Type of Well	Reduced Level	Aquifer Type/Lithology	Height of Measuring (m, agl)	Depth (m,bgl)	Diameter (m)	Purpose of Monitoring (WL/WQ)	Monitoring Mechanism	Agency
62.	PAL_HAT_KHI_1	Khilluka_28811	Khilluka	Arman Ali	27.9941	77.2288	Tube Well	194	Alluvial	0.65	23	0.15	WQ	Manual	Atal Jal
63.	GWL-06-619-00466-00028810-001	Khokiyaka_28810	Khokiyaka	Baag Wala Kua	28.1075	77.2188	Dug Well	195	Trans-Yamuna Alluvial	0.40	7	2.28	WL	Manual	Atal Jal-Private
64.	PAL_HAT_KHO_1	Khokiyaka_28810	Khokhiyaka	Pvt.	28.1037	77.2180	Hand Pump	196	Alluvial	0.65	15	1.18	WQ	Manual	Atal Jal
65.	PAL_HAT_KON_1	Kondal_28812	Kondal	Shyamcharan	28.0184	77.2759	Hand Pump	194	Alluvial	0.21	15	0.74	WQ	Manual	Atal Jal
66.	HR_GW_750	Kot Mithaka_28813	Kot Mithaka	Govt Sr Sec School	27.9606	77.2324	Piezometer	201	Trans-Yamuna Alluvial	0.50	59	0.10	Both	Telemetric	Atal Jal
67.	GWL-06-619-00466-00028813-001	Kot Mithaka_28813	Kot	Near Govt School	27.9599	77.2300	Dug Well	195	Trans-Yamuna Alluvial	0.50	30	3.00	WL	Manual	Atal Jal-Private
68.	PAL_HAT_KUK_1	Kukerchati_245701	Kukerchati		28.0227	77.1936	Tube Well	191	Alluvial	0.50	18	0.15	WQ	Manual	Atal Jal
69.	GWL-06-619-00466-00265285-001	Kumrehda_265285	Kumrera	Near Pond	27.9515	77.1576	Dug Well	190	Trans-Yamuna Alluvial	0.90	17	2.45	WL	Manual	Atal Jal-Private
70.	PAL_HAT_KUM_1	Kumrehda_265285	Kumredha	Jenas	27.9507	77.1614	Hand Pump	192	Alluvial	0.56	15	1.08	WQ	Manual	Atal Jal
71.	GWL-06-619-00466-00028814-001	Ladmaki_28814	Ladmaki	Near Government School	28.0373	77.1735	Dug Well	190	Trans-Yamuna Alluvial	0.20	12	1.80	WL	Manual	Atal Jal-Private
72.	PAL_HAT_LAD_1	Ladmaki_28814	Ladmaki	Arbaz	28.0363	77.1735	Tube Well	191	Alluvial	0.72	15	1.93	WQ	Manual	Atal Jal
73.	GWL-06-619-00466-00028818-001	Malai_28818	Malai	Dhanna Ka Kua	27.9936	77.1699	Dug Well	190	Trans-Yamuna Alluvial	0.50	15	2.70	WL	Manual	Atal Jal-Private
74.	PAL_HAT_MAL_1	Malai_28818	Malai	Sajid	28.0093	77.1639	Bore Well	186	Alluvial	0.46	16	1.39	WQ	Manual	Atal Jal
75.	HR_GW_754	Malokhera_28819	Malokhera	Govt Middle School	28.0680	77.2486	Piezometer	217	Trans-Yamuna Alluvial	0.50	60	0.10	Both	Telemetric	Atal Jal
76.	GWL-06-619-00466-00028819-001	Malokhera_28819	Malokhera	Govt. School Ke Saamne	28.0710	77.2444	Dug Well	193	Trans-Yamuna Alluvial	0.10	10	2.35	WL	Manual	Atal Jal-Private
77.	GWL-06-619-00466-00028817-001	Maluka_28817	Mahluka	Near Johar	28.0522	77.1588	Dug Well	193	Trans-Yamuna Alluvial	0.10	7	1.50	WL	Manual	Atal Jal-Private
78.	PAL_HAT_MAH_1	Maluka_28817	Mahluka	Sarash	28.0558	77.1587	Hand Pump	192	Alluvial	0.10	15	1.50	WQ	Manual	Atal Jal
79.	HR_GW_755	Mandkola_28821	Mandkola	Govt Sr Sec School, Mandkola	28.1328	77.1750	Piezometer	211	Trans-Yamuna Alluvial	0.50	46	0.10	Both	Telemetric	Atal Jal
80.	PAL_HAT_MAD_1	Mandnaka_28816	Madnaka	Govt.	28.1006	77.1771	Hand Pump	193	Alluvial	0.45	12	2.61	WQ	Manual	Atal Jal
81.	GWL-06-619-00466-00028822-001	Mandori_28822	Mandori	Talab Wala Kua	28.1399	77.2047	Dug Well	194	Trans-Yamuna Alluvial	0.10	16	3.00	WL	Manual	Atal Jal-Private
82.	PAL_HAT_MRI_1	Mandori_28822	Mandori	Pvt.	28.1372	77.2042	Hand Pump	190	Alluvial	0.92	14	1.56	WQ	Manual	Atal Jal

Atal Bhujal Yojana - Block Hydrogeological Report

S.No	Well ID	Gram Panchayat	Name of the village	Site Name	Latitude	Longitude	Type of Well	Reduced Level	Aquifer Type/Lithology	Height of Measuring (m, agl)	Depth (m,bgl)	Diameter (m)	Purpose of Monitoring (WL/WQ)	Monitoring Mechanism	Agency
83.	GWL-06-619-00466-00028823-001	Mangorka_28823	Mangorka	Khet Wala Kua	28.0857	77.2471	Dug Well	196	Trans-Yamuna Alluvial	0.42	12	2.93	WL	Manual	Atal Jal-Private
84.	PAL_HAT_MKA_1	Mangorka_28823	Mangorka	Irshad	28.0805	77.2509	Bore Well	194	Alluvial	0.42	18	2.93	WQ	Manual	Atal Jal
85.	HR_GW_707	Manpur_28820	Manpur	Govt Sr Sec School	27.9853	77.2766	Piezometer	211	Trans-Yamuna Alluvial	0.50	50	0.10	Both	Telemetric	Atal Jal
86.	GWL-06-619-00466-00265297-001	Mathepur_265297	Mathepur	Water Supply House	28.0672	77.1584	Dug Well	194	Trans-Yamuna Alluvial	1.50	9	2.00	WL	Manual	Atal Jal-Private
87.	PAL_HAT_MAT_1	Mathepur_265297	Mathepur	Abash	28.0671	77.1583	Tube Well	194	Alluvial	0.60	14	2.18	WQ	Manual	Atal Jal
88.	GWL-06-619-00466-00028824-001	Meerka_28824	Meerka	Old Sarpanch House	28.0758	77.1414	Dug Well	192	Trans-Yamuna Alluvial	1.00	8	1.50	WL	Manual	Atal Jal-Private
89.	PAL_HAT_MIR_1	Meerka_28824	Meerka	Govt.	28.0740	77.1395	Tube Well	189	Alluvial	0.69	14	1.27	WQ	Manual	Atal Jal
90.	GWL-06-619-00466-00028826-001	Mohdamka_28826	Mohdamka	Sarpanch House	28.0053	77.2419	Bore Well	194	Trans-Yamuna Alluvial	0.10	20	0.15	WL	Manual	Atal Jal-Private
91.	PAL_HAT_MOH_1	Mohdamka_28826	Mohdamka		28.0013	77.2484	Tube Well	194	Alluvial	0.36	16	0.54	WQ	Manual	Atal Jal
92.	HR_GW_709	Nagal Jaat_28827	Nangal Jat	Govt Middle School	27.9441	77.2858	Piezometer	205	Trans-Yamuna Alluvial	0.50	59	0.10	Both	Telemetric	Atal Jal
93.	HR_GW_736	Nagal Sabha_28828	Nangal Sabha	Govt Middle School	27.8991	77.2526	Piezometer	210	Trans-Yamuna Alluvial	0.50	56	0.10	Both	Telemetric	Atal Jal
94.	GWL-06-619-00466-00028828-001	Nagal Sabha_28828	Nangal Sabha	Kabir Plot	27.8984	77.2520	Tube Well	190	Trans-Yamuna Alluvial	0.10	33	0.20	WL	Manual	Atal Jal-Private
95.	GWL-06-619-00466-00028829-001	Pachanka_28829	Pachanka	Near Pond	28.0208	77.2229	Dug Well	193	Trans-Yamuna Alluvial	0.48	14	2.30	WL	Manual	Atal Jal-Private
96.	PAL_HAT_PAC_1	Pachanka_28829	Pachnaka	Jameel	28.0207	77.2228	Tube Well	193	Alluvial	0.19	18	0.85	WQ	Manual	Atal Jal
97.	HR_GW_756	Pahadi_28831	Pahadi	Govt Middle School	27.9745	77.2551	Piezometer	207	Trans-Yamuna Alluvial	0.50	54	0.10	Both	Telemetric	Atal Jal
98.	GWL-06-619-00466-00028831-001	Pahadi_28831	Pahari	Silochna Anganwadi House	27.9737	77.2527	Bore Well	192	Trans-Yamuna Alluvial	0.22	15	0.15	WL	Manual	Atal Jal-Private
99.	HR_GW_757	Pahadpur_28830	Pahadpur	Govt Middle School	28.0161	77.1821	Piezometer	216	Trans-Yamuna Alluvial	0.50	58	0.10	Both	Telemetric	Atal Jal
100.	GWL-06-619-00466-00028832-001	Pawsar_28832	Pawsar	Tarif House	27.9437	77.2411	Tube Well	192	Trans-Yamuna Alluvial	0.30	40	0.20	WL	Manual	Atal Jal-Private
101.	PAL_HAT_PAW_1	Pawsar_28832	Pawsar	Hawh	27.9425	77.2424	Tube Well	192	Alluvial	0.44	25	0.14	WQ	Manual	Atal Jal
102.	PAL_HAT_PON_1	Pondri_28833	Pondri	Lakhan	28.1173	77.1317	Hand Pump	189	Alluvial	0.58	12	1.62	WQ	Manual	Atal Jal
103.	HR_GW_710	Puthli_28834	Puthli	Govt Middle School	28.0887	77.2214	Piezometer	201	Trans-Yamuna Alluvial	0.50	51	0.10	Both	Telemetric	Atal Jal

Atal Bhujal Yojana - Block Hydrogeological Report

S.No	Well ID	Gram Panchayat	Name of the village	Site Name	Latitude	Longitude	Type of Well	Reduced Level	Aquifer Type/Lithology	Height of Measuring (m, agl)	Depth (m,bgl)	Diameter (m)	Purpose of Monitoring (WL/WQ)	Monitoring Mechanism	Agency
104.	GWL-06-619-00466-00028834-001	Puthli_28834	Puthli	Jatav Chaupal K Piche	28.0915	77.2208	Dug Well	196	Trans-Yamuna Alluvial	0.33	12	2.00	WL	Manual	Atal Jal-Private
105.	GWL-06-619-00466-00028835-001	Raniyala Khurd_28835	Raniyala Khurd	Abdulai Masjid	27.9566	77.2012	Dug Well	193	Trans-Yamuna Alluvial	1.00	10	1.60	WL	Manual	Atal Jal-Private
106.	PAL_PAL_RAN_1	Raniyala Khurd_28835	Ranilaya Khurd	Majid	27.9539	77.2115	Tube Well	191	Alluvial	0.90	18	1.22	WQ	Manual	Atal Jal
107.	GWL-06-619-00466-00028836-001	Ransika_28836	Ransika	Huchpuri Road	28.0454	77.1577	Dug Well	193	Trans-Yamuna Alluvial	0.80	15	1.00	WL	Manual	Atal Jal-Private
108.	PAL_HAT_RAN_1	Ransika_28836	Ransika	Kamrudin	28.0414	77.1509	Hand Pump	193	Alluvial	0.58	13	2.34	WQ	Manual	Atal Jal
109.	HR_GW_711	Reebar_28837	Reebar	Govt Middle School	28.1267	77.1605	Piezometer	205	Trans-Yamuna Alluvial	0.50	54	0.10	Both	Telemetric	Atal Jal
110.	GWL-06-619-00466-00028837-001	Reebar_28837	Reebar	Firki Kua	28.1282	77.1626	Dug Well	194	Trans-Yamuna Alluvial	0.83	12	1.59	WL	Manual	Atal Jal-Private
111.	GWL-06-619-00466-00028838-001	Rindka_28838	Rindka	Mandir Wala Kua	28.0536	77.2504	Dug Well	195	Trans-Yamuna Alluvial	0.70	12	1.50	WL	Manual	Atal Jal-Private
112.	PAL_HAT_RIN_1	Rindka_28838	Rindka	Pawan	28.0521	77.2490	Bore Well	192	Alluvial	0.70	18	1.50	WQ	Manual	Atal Jal
113.	HR_GW_712	Roopnagar Natoli_246073	Roopnagar Natoli	Govt Middle School	27.9217	77.2243	Piezometer	208	Trans-Yamuna Alluvial	0.50	58	0.10	Both	Telemetric	Atal Jal
114.	GWL-06-619-00466-00246073-002	Roopnagar Natoli_246073	Roopnagar Natoli	Near Booster	27.9210	77.2254	Bore Well	191	Trans-Yamuna Alluvial	0.50	80	0.25	WL	Manual	Atal Jal-Private
115.	HR_GW_760	Roopraka_28840	Roopraka	Govt High School	27.9986	77.1973	Piezometer	220	Trans-Yamuna Alluvial	0.50	60	0.10	Both	Telemetric	Atal Jal
116.	GWL-06-619-00466-00028840-001	Roopraka_28840	Roopraka	Near Pond	27.9966	77.1993	Dug Well	197	Trans-Yamuna Alluvial	0.55	20	2.30	WL	Manual	Atal Jal-Private
117.	GWL-06-619-00466-00028841-001	Sapanki_28841	Sapanki	Talab Wala Kua	28.0847	77.2360	Dug Well	195	Trans-Yamuna Alluvial	0.98	10	2.75	WL	Manual	Atal Jal-Private
118.	PAL_HAT_SAP_1	Sapanki_28841	Sapanki	Jakir	28.0866	77.2378	Bore Well	194	Alluvial	0.99	15	1.00	WQ	Manual	Atal Jal
119.	GWL-06-619-00466-00028842-001	Saroli_28842	Saroli	Road Wala Kua	28.1752	77.1900	Dug Well	195	Trans-Yamuna Alluvial	0.63	15	2.20	WL	Manual	Atal Jal-Private
120.	PAL_HAT_SIR_1	Saroli_28842	Saroli	Pvt.	28.1724	77.1904	Hand Pump	192	Alluvial	0.87	15	1.16	WQ	Manual	Atal Jal
121.	GWL-06-619-00466-00028843-001	Swamika_28843	Swamika	Old Sarpanch	28.0607	77.1951	Bore Well	193	Trans-Yamuna Alluvial	0.80	20	0.15	WL	Manual	Atal Jal-Private
122.	PAL_HAT_SWA_1	Swamika_28843	Swamika	Govt.	28.0567	77.2005	Tube Well	186	Alluvial	0.58	14	1.27	WQ	Manual	Atal Jal
123.	PAL_HAT_TON_1	Tonka_28844	Tonka	Noamn	27.9648	77.1546	Hand Pump	194	Alluvial	0.31	13	1.46	WQ	Manual	Atal Jal
124.	PAL_HAT_UTT_1	Uttawar_28845	Uttawar	Majid	27.9882	77.1854	Bore Well	191	Alluvial	0.62	20	0.83	WQ	Manual	Atal Jal

Atal Bhujal Yojana - Block Hydrogeological Report

S.No	Well ID	Gram Panchayat	Name of the village	Site Name	Latitude	Longitude	Type of Well	Reduced Level	Aquifer Type/Lithology	Height of Measuring (m, agl)	Depth (m,bgl)	Diameter (m)	Purpose of Monitoring (WL/WQ)	Monitoring Mechanism	Agency
125.	W280845077083001	Bighawali_28789	Akbarpur	Akbarpur	28.1069	77.1431	Dug Well	191	Alluvium	0.76	11	1.47	WQ	Manual	CGWB
126.	W275730077134501	Kot Mithaka_28813	Kot	Kot	27.9583	77.2292	Tube Well	193	Alluvium	0.43	64	0.62	WQ	Manual	CGWB
127.	W280205077111501	Lakhnaka_28815	Lakhnaka	Lakhnaka	28.0339	77.1875	Piezometer	194	Unconfined to Semi Confined	1.50	93	0.15	Both	Manual	CGWB
128.	W280857077110701	Mandkola_28821	Mandkola	Mandkola	28.1321	77.1754	Dug Well	194	Alluvium	0.45	51	1.02	WQ	Manual	CGWB
129.	W280121077103601	Pahadpur_28830	Pehladpur	Pehladpur-Pz	28.0225	77.1767	Piezometer	192	Unconfined to Semi Confined	1.00	100	0.10	Both	Manual	CGWB
130.	W280245077143001	Hathin	Hathin	Hathin	28.0458	77.2417	Tube Well	193	Alluvium	0.51	NA	0.15	WQ	Manual	CGWB
131.	Al_27.926_77.247	Ali Meo_28782	Alimeo	In The Village	27.9257	77.2471	Dug Well	194.33	Unconfined to Semi Confined	1.25	90	2.00	WL	Manual	SGWD
132.	An_27.905_77.27	Andhop_28783	Andhop	Panchyati In Front Of School, Ow	27.9051	77.2700	Dug Well	193.25	Unconfined to Semi Confined	1.25	45	2.00	WL	Manual	SGWD
133.	Bi_28.031_77.168	Babupur Hathin_28785	Bibipur	School Well, Ow	28.0311	77.1676	Dug Well	203.04	Unconfined to Semi Confined	1.25	7	2.00	WL	Manual	SGWD
134.	Ba_27.953_77.264	Bahin_28786	Bahin	Harijan Well On Hodal Road, Ow	27.9534	77.2636	Dug Well	195.17	Unconfined to Semi Confined	1.25	40	2.00	WL	Manual	SGWD
135.	La_27.958_77.273	Bahin_28786	Lalgarh	Panchyati Near Mandir, Ow	27.9575	77.2726	Dug Well	192	Unconfined to Semi Confined	0.42	15	0.13	WL	Manual	SGWD
136.	Ba_28.048_77.292	Bajada Pahari_28787	Bajida Pahari	Mandira Well Just Outside Of North Side Of Village, Ow	28.0483	77.2916	Dug Well	194.31	Unconfined to Semi Confined	1.25	10	2.00	WL	Manual	SGWD
137.	Bh_28.088_77.264	Bhanguri Palwal_245700	Bhanguri	Mati Ram Bhramin In Front Of Munsu Ram House Lhs Of Hathin Road, Ow	28.0883	77.2640	Dug Well	198.8	Unconfined to Semi Confined	1.25	30	2.00	WL	Manual	SGWD
138.	Bh_28.08_77.151	Bighawali_28789	Bhopawali	Samlati Near House Of Indu S/O Sh. Sadhu Mehtab, Ow	28.0874	77.1507	Dug Well	193.71	Unconfined to Semi Confined	1.25	6	2.00	WL	Manual	SGWD
139.	Ch_28.072_77.174	Chhainsa_28792	Chainssa	Panchyati Rhs Of Hathin Nuh Road, Ow	28.0717	77.1737	Dug Well	193.7	Unconfined to Semi Confined	1.25	8	2.00	WL	Manual	SGWD
140.	Kh_28.021_77.223	Dhiranki_28794	Khanoewali	Govt. Primary School, Pt	28.0278	77.1957	Piezometer	193.74	Unconfined to Semi Confined	0.65	20	0.10	WL	Manual	SGWD
141.	Gh_28.078_77.21	Gharrot_28798	Gharrot	Jaya Kali Pandit'S Well Rhs Of Hathin Mandkola Road On Sw Direction Of Village, Ow	28.0780	77.2103	Dug Well	195.05	Unconfined to Semi Confined	1.25	23	2.00	WL	Manual	SGWD
142.	Go_28.014_77.212	Gohpur_28800	Gohpur	Panchyati Near Talab Rhs On Hathin Utawar Road, Ow	28.0142	77.2121	Dug Well	190.29	Unconfined to Semi Confined	1.25	35	2.00	WL	Manual	SGWD

Atal Bhujal Yojana - Block Hydrogeological Report

S.No	Well ID	Gram Panchayat	Name of the village	Site Name	Latitude	Longitude	Type of Well	Reduced Level	Aquifer Type/Lithology	Height of Measuring (m, agl)	Depth (m,bgl)	Diameter (m)	Purpose of Monitoring (WL/WQ)	Monitoring Mechanism	Agency
143.	Hu_28.028_77.231	Huchpuri_28803	Hathin	Bdpo Office, Pt	28.0281	77.2318	Dug Well	192	Unconfined to Semi Confined	0.47	23	2.48	WL	Manual	SGWD
144.	Hc_28.028_77.2317	Huchpuri_28803	Hathin	Inder Singh S/O Shri Raghubir Singh In Front Of Govt. School Rhs Of Hathin Gehlab Road N-W Of Vill., Kow	28.0281	77.2318	Piezometer	192	Unconfined to Semi Confined	0.50	17	0.10	WL	Manual	SGWD
145.	Kh_27.886_77.272	Khaika_273402	Khika Hathin	West Of Village On Dinu S/O Meru Field, Ow	27.8861	77.2723	Dug Well	193.33	Unconfined to Semi Confined	1.25	18	2.00	WL	Manual	SGWD
146.	Ko_28.011_77.262	Kondal_28812	Kondal	Krishan Pandit Well Near Pyare Lal Tw Towards Manpur Village Path, Ow	28.0110	77.2624	Dug Well	193.72	Unconfined to Semi Confined	1.25	20	2.00	WL	Manual	SGWD
147.	Ku_28.02_77.192	Kukerchati_245701	Kukarchati	Natha S/O Malkhan On Lhs Of Dhiraka Path To Village On Pond, Ow	28.0204	77.1925	Dug Well	195.66	Unconfined to Semi Confined	1.25	14	2.00	WL	Manual	SGWD
148.	Ma_28.1328_77.1741	Mandkola_28821	Mandkola	Lhs Of Mandkola Nuh Road Near Bud Tree, Ow	28.1329	77.1741	Dug Well	196	Unconfined to Semi Confined	0.64	6	1.21	WL	Manual	SGWD
149.	Ma_28.132_77.174	Mandkola_28821	Mandkola	Irrigation Rest House, Pt	28.1329	77.1741	Piezometer	196	Unconfined to Semi Confined	0.50	10	0.10	WL	Manual	SGWD
150.	Ma_28.1_77.177	Mandnaka_28816	Mandnaka	Mandir Well Lhs Of Road From Mandkola, Ow	28.1002	77.1767	Dug Well	196	Unconfined to Semi Confined	0.45	12	2.61	WL	Manual	SGWD
151.	Ma_27.98_77._28	Manpur_28820	Manpur	Saneliya S/O Mariya Well West Side Of Village On Lhs Of Path From Kundal Village, Ow	27.9800	77.2800	Dug Well	193.62	Unconfined to Semi Confined	1.25	19	2.00	WL	Manual	SGWD
152.	Na_27.941_77._278	Nagal Jaat_28827	Nangal Jat	Panchyati North Of Village On Rhs Of Hodal Uthawar Road, Ow	27.9408	77.2778	Dug Well	195.53	Unconfined to Semi Confined	1.25	30	2.00	WL	Manual	SGWD
153.	Po_28.118_77.137	Pondri_28833	Pondri	Panchyati At The End Of Approach Road To Village, Ow	28.1178	77.1365	Dug Well	193.02	Unconfined to Semi Confined	1.25	8	2.00	WL	Manual	SGWD
154.	To_27.963_77.152	Tonka_28844	Tonka	Rehmat S/O Mussa Fiedl Rhs Of Uttawar To Sikarwa Road, Ow	27.9625	77.1521	Dug Well	207.34	Unconfined to Semi Confined	1.25	13	2.00	WL	Manual	SGWD
155.	Ut_27.9753_77.1842	Uttawar_28845	Uttawar	Samlati North Of Village In Chabaria Mohala, Ow	27.9754	77.1843	Piezometer	194	Unconfined to Semi Confined	0.50	21	0.10	WL	Manual	SGWD
156.	Ut_27.975_77.184	Uttawar_28845	Uttawar	In Field On Har Nath S/O Asseem Near Idgah, Pt	27.9754	77.1843	Tube Well	203.91	Unconfined to Semi Confined	0.65	20	0.10	WL	Manual	SGWD

ANNEXURE: 2
WATER LEVEL (WL) DATA OF MONITORING WELLS

State	Haryana	District	Palwal	Block	Hathin
Month of Pre-monsoon Water Level Measurement					May/June
Month of Post-monsoon water Level measurement					October/November

S.No.	Observation Point	Source	Well Types	Co-ordinate		Water Level (m)																			
				Latitude	Longitude	2015		2016		2017		2018		2019		2020		2021		2022		2023		2024	
						Pre	Post	Pre	Post	Pre	Post	Pre	Post	Pre	Post	Pre	Post	Pre	Post	Pre	Post	Pre	Post	Pre	Post
1	Ali Brahaman_28781	Atal Jal	Piezometer	27.9203	77.2550	NA	NA	NA	NA	NA	NA	NA	NA	NA	NA	NA	NA	NA	NA	NA	NA	NA	21.06	19.7	
2	Ali Brahaman_28781	Atal Jal	Dug Well	27.9159	77.2543	NA	NA	NA	NA	NA	NA	NA	NA	NA	NA	NA	NA	NA	NA	NA	NA	24.7	23.62	25.45	24.25
3	Andhrola_28784	Atal Jal	Tube Well	28.0214	77.2405	NA	NA	NA	NA	NA	NA	NA	NA	NA	NA	NA	NA	NA	NA	NA	NA	8.1	8.1	9.2	7.1
4	Babupur Hathin_28785	Atal Jal	Piezometer	28.0297	77.1699	NA	NA	NA	NA	NA	NA	NA	NA	NA	NA	NA	NA	NA	NA	NA	NA	NA	NA	7.6	3.8
5	Bahin_28786	Atal Jal	Piezometer	27.9527	77.2636	NA	NA	NA	NA	NA	NA	NA	NA	NA	NA	NA	NA	NA	NA	NA	NA	NA	NA	15.9	13.77
6	Bhamrola Jogi_28788	Atal Jal	Dug Well	28.0627	77.2892	NA	NA	NA	NA	NA	NA	NA	NA	NA	NA	NA	NA	NA	NA	NA	NA	2.94	2.4	3.55	3
7	Bhanguri Palwal_245700	Atal Jal	Piezometer	28.0897	77.2644	NA	NA	NA	NA	NA	NA	NA	NA	NA	NA	NA	NA	NA	NA	NA	NA	NA	NA	4.55	4.22
8	Bhimsika_28790	Atal Jal	Piezometer	28.0041	77.1479	NA	NA	NA	NA	NA	NA	NA	NA	NA	NA	NA	NA	NA	NA	NA	NA	NA	NA	6.4	4.4
9	Bhimsika_28790	Atal Jal	Dug Well	28.0041	77.1470	NA	NA	NA	NA	NA	NA	NA	NA	NA	NA	NA	NA	NA	NA	NA	NA	6.4	6.58	6.95	6.45
10	Bhoodpur_265002	Atal Jal	Dug Well	27.9838	77.2231	NA	NA	NA	NA	NA	NA	NA	NA	NA	NA	NA	NA	NA	NA	NA	NA	13.4	13.65	13.75	13.35
11	Bichpuri_28791	Atal Jal	Dug Well	28.0973	77.2360	NA	NA	NA	NA	NA	NA	NA	NA	NA	NA	NA	NA	NA	NA	NA	NA	2.7	2.37	2.92	1.63
12	Buraka_265003	Atal Jal	Piezometer	28.0375	77.2158	NA	NA	NA	NA	NA	NA	NA	NA	NA	NA	NA	NA	NA	NA	NA	NA	NA	NA	14.55	12.7
13	Buraka_265003	Atal Jal	Bore Well	28.0443	77.2114	NA	NA	NA	NA	NA	NA	NA	NA	NA	NA	NA	NA	NA	NA	NA	NA	11.7	11.17	11.87	10.1
14	Chilli_265331	Atal Jal	Bore Well	28.0084	77.1969	NA	NA	NA	NA	NA	NA	NA	NA	NA	NA	NA	NA	NA	NA	NA	NA	11.88	11.05	11.65	10.65
15	Dhakalpur_28793	Atal Jal	Dug Well	27.9848	77.1603	NA	NA	NA	NA	NA	NA	NA	NA	NA	NA	NA	NA	NA	NA	NA	NA	2.1	1.31	2.6	1.5
16	Dhiranki_28794	Atal Jal	Piezometer	28.0280	77.1955	NA	NA	NA	NA	NA	NA	NA	NA	NA	NA	NA	NA	NA	NA	NA	NA	NA	NA	11.8	10.9
17	Durenchi_28795	Atal Jal	Dug Well	28.0684	77.1441	NA	NA	NA	NA	NA	NA	NA	NA	NA	NA	NA	NA	NA	NA	NA	NA	0.2	0.13	1	0.12
18	Firojpur Rajput_28796	Atal Jal	Dug Well	28.0579	77.2441	NA	NA	NA	NA	NA	NA	NA	NA	NA	NA	NA	NA	NA	NA	NA	NA	2.52	1.1	2.52	2
19	Gadhi Vinoda_265049	Atal Jal	Piezometer	28.0577	77.2332	NA	NA	NA	NA	NA	NA	NA	NA	NA	NA	NA	NA	NA	NA	NA	NA	NA	NA	4.75	2.85
20	Gadhi Vinoda_265049	Atal Jal	Dug Well	28.0584	77.2311	NA	NA	NA	NA	NA	NA	NA	NA	NA	NA	NA	NA	NA	NA	NA	NA	5.7	5.53	5.35	4.3
21	Gehlab_28797	Atal Jal	Piezometer	28.0323	77.2783	NA	NA	NA	NA	NA	NA	NA	NA	NA	NA	NA	NA	NA	NA	NA	NA	NA	NA	5.65	2.82
22	Gehlab_28797	Atal Jal	Dug Well	28.0311	77.2790	NA	NA	NA	NA	NA	NA	NA	NA	NA	NA	NA	NA	NA	NA	NA	NA	3.6	2.5	4.02	3.4
23	Gharrot_28798	Atal Jal	Piezometer	28.0667	77.2118	NA	NA	NA	NA	NA	NA	NA	NA	NA	NA	NA	NA	NA	NA	NA	NA	NA	NA	8.8	7
24	Ghigdaka_28799	Atal Jal	Bore Well	28.0596	77.2092	NA	NA	NA	NA	NA	NA	NA	NA	NA	NA	NA	NA	NA	NA	NA	NA	11.3	10.15	11.2	10.1
25	Ghudawali_28802	Atal Jal	Dug Well	27.9751	77.1649	NA	NA	NA	NA	NA	NA	NA	NA	NA	NA	NA	NA	NA	NA	NA	NA	5.55	5.92	6.05	5.35
26	Guraksar_28801	Atal Jal	Dug Well	28.0052	77.2279	NA	NA	NA	NA	NA	NA	NA	NA	NA	NA	NA	NA	NA	NA	NA	NA	13.96	13	15.03	14.4
27	Hurithal_28804	Atal Jal	Piezometer	28.0464	77.1899	NA	NA	NA	NA	NA	NA	NA	NA	NA	NA	NA	NA	NA	NA	NA	NA	NA	NA	6.8	4.5
28	Hurithal_28804	Atal Jal	Dug Well	28.0451	77.1918	NA	NA	NA	NA	NA	NA	NA	NA	NA	NA	NA	NA	NA	NA	NA	NA	7.93	7.4	8.8	7.62
29	Jainpur_246072	Atal Jal	Dug Well	28.0988	77.1933	NA	NA	NA	NA	NA	NA	NA	NA	NA	NA	NA	NA	NA	NA	NA	NA	2.91	1.54	2.7	1.2
30	Jalalpur Hathin_28805	Atal Jal	Dug Well	28.0208	77.1600	NA	NA	NA	NA	NA	NA	NA	NA	NA	NA	NA	NA	NA	NA	NA	NA	4.25	4.41	5.27	3.53
31	Janacholi_28806	Atal Jal	Piezometer	28.0839	77.1964	NA	NA	NA	NA	NA	NA	NA	NA	NA	NA	NA	NA	NA	NA	NA	NA	NA	NA	5.1	1.7
32	Janacholi_28806	Atal Jal	Dug Well	28.0823	77.2026	NA	NA	NA	NA	NA	NA	NA	NA	NA	NA	NA	NA	NA	NA	NA	NA	5.22	4.6	6.1	4.3
33	Jarari_28807	Atal Jal	Piezometer	27.9856	77.2119	NA	NA	NA	NA	NA	NA	NA	NA	NA	NA	NA	NA	NA	NA	NA	NA	NA	NA	13.9	9.7
34	Jarari_28807	Atal Jal	Dug Well	27.9859	77.2101	NA	NA	NA	NA	NA	NA	NA	NA	NA	NA	NA	NA	NA	NA	NA	NA	12.7	12.38	13.7	12.05
35	Kalsada_28808	Atal Jal	Piezometer	28.0686	77.2774	NA	NA	NA	NA	NA	NA	NA	NA	NA	NA	NA	NA	NA	NA	NA	NA	NA	NA	2.18	0.6
36	Kalsada_28808	Atal Jal	Dug Well	28.0742	77.2715	NA	NA	NA	NA	NA	NA	NA	NA	NA	NA	NA	NA	NA	NA	NA	NA	4.5	4.5	4.96	4.05
37	Kanoli_28809	Atal Jal	Dug Well	28.1658	77.1780	NA	NA	NA	NA	NA	NA	NA	NA	NA	NA	NA	NA	NA	NA	NA	NA	0.9	0.97	2.2	0.9
38	Khedli Jeeta_265035	Atal Jal	Dug Well	28.1820	77.1777	NA	NA	NA	NA	NA	NA	NA	NA	NA	NA	NA	NA	NA	NA	NA	NA	1.2	0.72	2.1	1.15

Atal Bhujal Yojana - Block Hydrogeological Report

S.No.	Observation Point	Source	Well Types	Co-ordinate		Water Level (m)																			
				Latitude	Longitude	2015		2016		2017		2018		2019		2020		2021		2022		2023		2024	
						Pre	Post	Pre	Post	Pre	Post	Pre	Post	Pre	Post	Pre	Post	Pre	Post	Pre	Post	Pre	Post	Pre	Post
39	Khilluka_28811	Atal Jal	Bore Well	27.9998	77.2285	NA	NA	NA	NA	NA	NA	NA	NA	NA	NA	NA	NA	NA	NA	NA	NA	13.36	13.32	13.15	13
40	Khokiyaka_28810	Atal Jal	Dug Well	28.1075	77.2188	NA	NA	NA	NA	NA	NA	NA	NA	NA	NA	NA	NA	NA	NA	NA	NA	3.2	2.48	3.3	1.7
41	Kot Mithaka_28813	Atal Jal	Piezometer	27.9606	77.2324	NA	NA	NA	NA	NA	NA	NA	NA	NA	NA	NA	NA	NA	NA	NA	NA	NA	NA	12.65	11.3
42	Kot Mithaka_28813	Atal Jal	Dug Well	27.9599	77.2300	NA	NA	NA	NA	NA	NA	NA	NA	NA	NA	NA	NA	NA	NA	NA	NA	11.7	10.85	11.82	10.9
43	Kumrehda_265285	Atal Jal	Dug Well	27.9515	77.1576	NA	NA	NA	NA	NA	NA	NA	NA	NA	NA	NA	NA	NA	NA	NA	NA	2.9	2.6	3.8	2.5
44	Ladmaki_28814	Atal Jal	Dug Well	28.0373	77.1735	NA	NA	NA	NA	NA	NA	NA	NA	NA	NA	NA	NA	NA	NA	NA	NA	4.23	4.23	4.42	3.72
45	Malai_28818	Atal Jal	Dug Well	27.9936	77.1699	NA	NA	NA	NA	NA	NA	NA	NA	NA	NA	NA	NA	NA	NA	NA	NA	4.18	4.25	4.9	4.1
46	Malokhera_28819	Atal Jal	Piezometer	28.0680	77.2486	NA	NA	NA	NA	NA	NA	NA	NA	NA	NA	NA	NA	NA	NA	NA	NA	NA	NA	1.65	0.7
47	Malokhera_28819	Atal Jal	Dug Well	28.0710	77.2444	NA	NA	NA	NA	NA	NA	NA	NA	NA	NA	NA	NA	NA	NA	NA	NA	2.2	1.05	1.45	0.9
48	Maluka_28817	Atal Jal	Dug Well	28.0522	77.1588	NA	NA	NA	NA	NA	NA	NA	NA	NA	NA	NA	NA	NA	NA	NA	NA	0.81	0.51	0.43	0.1
49	Mandkola_28821	Atal Jal	Piezometer	28.1328	77.1750	NA	NA	NA	NA	NA	NA	NA	NA	NA	NA	NA	NA	NA	NA	NA	NA	NA	NA	1.5	0.5
50	Mandori_28822	Atal Jal	Dug Well	28.1399	77.2047	NA	NA	NA	NA	NA	NA	NA	NA	NA	NA	NA	NA	NA	NA	NA	NA	2.28	1.15	2.2	1.35
51	Mangorka_28823	Atal Jal	Dug Well	28.0857	77.2471	NA	NA	NA	NA	NA	NA	NA	NA	NA	NA	NA	NA	NA	NA	NA	NA	3.18	2.15	3.4	2
52	Manpur_28820	Atal Jal	Piezometer	27.9853	77.2766	NA	NA	NA	NA	NA	NA	NA	NA	NA	NA	NA	NA	NA	NA	NA	NA	NA	NA	10.02	9.54
53	Mathepur_265297	Atal Jal	Dug Well	28.0672	77.1584	NA	NA	NA	NA	NA	NA	NA	NA	NA	NA	NA	NA	NA	NA	NA	NA	1.13	0.81	1.38	0.13
54	Meerka_28824	Atal Jal	Dug Well	28.0758	77.1414	NA	NA	NA	NA	NA	NA	NA	NA	NA	NA	NA	NA	NA	NA	NA	NA	2.44	1.37	2.41	0.9
55	Mohdamka_28826	Atal Jal	Bore Well	28.0053	77.2419	NA	NA	NA	NA	NA	NA	NA	NA	NA	NA	NA	NA	NA	NA	NA	NA	7.9	7.55	8.8	8.15
56	Nagal Jaat_28827	Atal Jal	Piezometer	27.9441	77.2858	NA	NA	NA	NA	NA	NA	NA	NA	NA	NA	NA	NA	NA	NA	NA	NA	NA	NA	15.4	13.7
57	Nagal Sabha_28828	Atal Jal	Piezometer	27.8991	77.2526	NA	NA	NA	NA	NA	NA	NA	NA	NA	NA	NA	NA	NA	NA	NA	NA	NA	NA	20.7	18
58	Nagal Sabha_28828	Atal Jal	Tube Well	27.8984	77.2520	NA	NA	NA	NA	NA	NA	NA	NA	NA	NA	NA	NA	NA	NA	NA	NA	17	17.2	19.2	18.3
59	Pachanka_28829	Atal Jal	Dug Well	28.0208	77.2229	NA	NA	NA	NA	NA	NA	NA	NA	NA	NA	NA	NA	NA	NA	NA	NA	10.57	10.43	10.85	9.7
60	Pahadi_28831	Atal Jal	Piezometer	27.9745	77.2551	NA	NA	NA	NA	NA	NA	NA	NA	NA	NA	NA	NA	NA	NA	NA	NA	NA	NA	12.3	11.7
61	Pahadi_28831	Atal Jal	Bore Well	27.9737	77.2527	NA	NA	NA	NA	NA	NA	NA	NA	NA	NA	NA	NA	NA	NA	NA	NA	11.3	10.5	11.9	10.8
62	Pahadpur_28830	Atal Jal	Piezometer	28.0161	77.1821	NA	NA	NA	NA	NA	NA	NA	NA	NA	NA	NA	NA	NA	NA	NA	NA	NA	NA	12.13	8.97
63	Pawsar_28832	Atal Jal	Tube Well	27.9437	77.2411	NA	NA	NA	NA	NA	NA	NA	NA	NA	NA	NA	NA	NA	NA	NA	NA	16.8	16.4	17.9	16.65
64	Puthli_28834	Atal Jal	Piezometer	28.0887	77.2214	NA	NA	NA	NA	NA	NA	NA	NA	NA	NA	NA	NA	NA	NA	NA	NA	NA	NA	7.1	5
65	Puthli_28834	Atal Jal	Dug Well	28.0915	77.2208	NA	NA	NA	NA	NA	NA	NA	NA	NA	NA	NA	NA	NA	NA	NA	NA	8.17	7.95	8.37	7.75
66	Raniyala Khurd_28835	Atal Jal	Dug Well	27.9566	77.2012	NA	NA	NA	NA	NA	NA	NA	NA	NA	NA	NA	NA	NA	NA	NA	NA	6.45	6.74	6.95	6.2
67	Ransika_28836	Atal Jal	Dug Well	28.0454	77.1577	NA	NA	NA	NA	NA	NA	NA	NA	NA	NA	NA	NA	NA	NA	NA	NA	1.72	1.6	2.25	1.12
68	Reebar_28837	Atal Jal	Piezometer	28.1267	77.1605	NA	NA	NA	NA	NA	NA	NA	NA	NA	NA	NA	NA	NA	NA	NA	NA	NA	NA	1.3	0.69
69	Reebar_28837	Atal Jal	Dug Well	28.1282	77.1626	NA	NA	NA	NA	NA	NA	NA	NA	NA	NA	NA	NA	NA	NA	NA	NA	1.33	1	1.5	0.75
70	Rindka_28838	Atal Jal	Dug Well	28.0536	77.2504	NA	NA	NA	NA	NA	NA	NA	NA	NA	NA	NA	NA	NA	NA	NA	NA	3.86	2.92	4.3	2.85
71	Roopnagar Natoli_246073	Atal Jal	Piezometer	27.9217	77.2243	NA	NA	NA	NA	NA	NA	NA	NA	NA	NA	NA	NA	NA	NA	NA	NA	NA	NA	18.94	18.57
72	Roopnagar Natoli_246073	Atal Jal	Bore Well	27.9210	77.2254	NA	NA	NA	NA	NA	NA	NA	NA	NA	NA	NA	NA	NA	NA	NA	NA	20.2	20.6	20.65	19.45
73	Roopraka_28840	Atal Jal	Piezometer	27.9986	77.1973	NA	NA	NA	NA	NA	NA	NA	NA	NA	NA	NA	NA	NA	NA	NA	NA	NA	NA	14.25	12.79
74	Roopraka_28840	Atal Jal	Dug Well	27.9966	77.1993	NA	NA	NA	NA	NA	NA	NA	NA	NA	NA	NA	NA	NA	NA	NA	NA	13.69	13.97	13.85	13.1
75	Sapanki_28841	Atal Jal	Dug Well	28.0847	77.2360	NA	NA	NA	NA	NA	NA	NA	NA	NA	NA	NA	NA	NA	NA	NA	NA	4.6	3	3.7	2.2
76	Saroli_28842	Atal Jal	Dug Well	28.1752	77.1900	NA	NA	NA	NA	NA	NA	NA	NA	NA	NA	NA	NA	NA	NA	NA	NA	2.2	1.6	2.47	1.35
77	Swamika_28843	Atal Jal	Bore Well	28.0607	77.1951	NA	NA	NA	NA	NA	NA	NA	NA	NA	NA	NA	NA	NA	NA	NA	NA	8.32	7.65	9.19	7.1
78	Lakhnaka_28815	CGWB	Piezometer	28.0339	77.1875	8.08	10.62	8.83	9.73	8.1	8.42	8.5	8.7	12.66	8.64	NA	NA	NA	NA	NA	NA	NA	NA	NA	NA
79	Pahadpur_28830	CGWB	Piezometer	28.0225	77.1767	6.75	6.42	7.15	6.24	7.47	6.95	7.5	5.54	2.2	7.16	8.4	7.4	8.63	6.01	8.45	6.07	9.45	5.73	8.16	10
80	Ali Meo_28782	SGWD	Dug Well	27.9257	77.2471	13.9	14	14.8	15.2	15.5	15.35	15.57	15	16.6	16.1	17.25	17.1	19.75	17	18.86	18.6	18.15	18.85	18	19
81	Andhop_28783	SGWD	Dug Well	27.9051	77.2700	15.6	15.74	15.35	15.8	16.03	16.13	16.11	15.48	17.2	16.95	17.83	17.58	18.1	17.33	18.88	18.65	19.1	18.65	19.45	18.5
82	Babupur Hathin_28785	SGWD	Dug Well	28.0311	77.1676	3.25	3.35	3.8	3.55	3.75	3.6	3.88	3.8	4	3.65	4.2	4.05	4.95	3.05	4	3.75	3.85	3.7	3.35	3.55
83	Bahin_28786	SGWD	Dug Well	27.9534	77.2636	6.4	6.52	7	6.85	6.95	6.8	7	6.9	7.55	7.4	7.85	7.5	11.35	10.1	11.65	11.5	11.95	13.8	12.15	11.4

S.No.	Observation Point	Source	Well Types	Co-ordinate		Water Level (m)																			
				Latitude	Longitude	2015		2016		2017		2018		2019		2020		2021		2022		2023		2024	
						Pre	Post	Pre	Post	Pre	Post	Pre	Post	Pre	Post	Pre	Post	Pre	Post	Pre	Post	Pre	Post	Pre	Post
84	Bahin_28786	SGWD	Dug Well	27.9575	77.2726	11.65	11.75	12.85	12.8	12.3	12.2	12.39	12.2	13.1	13	13.7	13.45	NA	NA	11.6	NA	11.95	11.15	12.1	11.3
85	Bajada Pahari_28787	SGWD	Dug Well	28.0483	77.2916	5.75	5.82	6.25	5.8	6.1	5.8	6.3	6.18	6.5	6.4	6.75	6.45	7.15	5.9	6.4	4.95	6	5.55	5.85	5.25
86	Bhanguri Palwal_245700	SGWD	Dug Well	28.0883	77.2640	8.8	8.95	9.6	9.9	10.3	10.2	10.4	10.05	10.9	10.65	11.4	11.15	9.45	9.9	10.2	10	10.65	8.05	10	7.85
87	Bighawali_28789	SGWD	Dug Well	28.0874	77.1507	3.15	3.22	3.75	3.6	3.7	3.5	3.77	3.65	3.65	3.45	3.8	3.55	4.25	2.8	3.65	3.55	3.25	3.65	3	0.4
88	Chhainsa_28792	SGWD	Dug Well	28.0717	77.1737	1.8	1.75	2.9	2.8	2.9	2.4	2.93	2.9	3.25	3.2	3.35	3.3	2.3	2.7	2.5	2.15	2.85	2	2.17	1.75
89	Dhiranki_28794	SGWD	Piezometer	28.0278	77.1957	9.7	9.72	10.1	10.3	10.75	10.6	10.85	10.45	11.15	10.7	11.7	11.4	11.8	11.3	12.5	12.3	12.95	12.05	10.55	9
90	Gharrot_28798	SGWD	Dug Well	28.0780	77.2103	17.45	17.6	18.35	18.6	19.1	19.25	19.45	19.1	20.25	19.95	21.1	20.85	18.1	19.1	19.5	17.45	19.95	18	19.05	18.55
91	Gohpur_28800	SGWD	Dug Well	28.0142	77.2121	12.05	12.1	12.5	12.35	12.55	12.4	12.63	12.5	13.5	13.35	14.15	13.75	12.75	13.5	13.2	12.4	13.65	13	10.1	9.3
92	Huchpuri_28803	SGWD	Dug Well	28.0281	77.2318	9.05	9.12	9.55	9.85	10.05	10.9	10.15	10	10.85	10.6	11.35	11.1	10.25	9.85	11.2	10.35	11.85	10.05	12.3	9.85
93	Huchpuri_28803	SGWD	Piezometer	28.0281	77.2318	10	10.05	10.45	10.55	11.95	11.55	12	11.7	12.55	12.35	13.2	13.05	14.1	13.55	13.85	13.25	13.45	13.1	13.15	12.9
94	Khaika_273402	SGWD	Dug Well	27.8861	77.2723	13.65	13.8	14.55	14.85	14.95	15.05	15.08	14.4	15.75	15.35	16.35	16	13.5	13.65	13.8	13.5	14.1	13.35	14.35	13.05
95	Kondal_28812	SGWD	Dug Well	28.0110	77.2624	6.35	6.42	6.9	6.8	6.85	6.6	6.9	6.65	7.8	7.65	8.4	8.2	5.6	6.2	6	5.7	5.6	4.75	5.1	3.7
96	Kukerchati_245701	SGWD	Dug Well	28.0204	77.1925	9.6	9.8	10.4	10.25	10.45	10.2	10.57	10.4	11.95	11.7	12.55	12.35	9.8	10.25	10.6	10.45	10.95	10.25	10.65	9.95
97	Mandkola_28821	SGWD	Dug Well	28.1329	77.1741	1.45	1.4	1.95	1.4	1.4	1.3	1.43	1.35	1.7	1.55	2.1	2.05	4.2	1.9	2.4	2.1	2.7	3.55	1.3	0.85
98	Mandkola_28821	SGWD	Piezometer	28.1329	77.1741	1.4	1.6	1.95	1.6	1.5	1.35	1.6	1.4	1.55	1.5	1.6	1.4	1.6	1.8	1	0.95	0.8	2.3	0.7	0.85
99	Mandnaka_28816	SGWD	Dug Well	28.1002	77.1767	1.6	1.65	2.35	1.7	1.7	1.55	1.7	1.67	2.3	2.25	2.45	2.35	2.3	1.45	2.95	1.35	3.15	1.05	1.62	1.15
100	Manpur_28820	SGWD	Dug Well	27.9800	77.2800	6.75	6.85	7.3	7.2	7.25	7.1	7.13	6.95	7.35	7.25	7.75	7.55	10.2	10.75	11.05	10.85	11.35	11	10.55	10.2
101	Nagal Jaat_28827	SGWD	Dug Well	27.9408	77.2778	9.45	9.4	10	10.15	10.3	10.2	10.35	10.8	11.3	11.15	12.4	12.15	9.9	10.4	10.6	10.2	10.95	10	11.9	9.8
102	Pondri_28833	SGWD	Dug Well	28.1178	77.1365	1.6	1.68	2.05	1.85	1.9	1.65	1.92	1.8	2.3	2.25	2.45	2.35	1.35	1.95	0.97	0.85	0.85	0.9	0.8	0.95
103	Tonka_28844	SGWD	Dug Well	27.9625	77.1521	2	2.05	2.45	2.2	2.55	2.1	2.27	2.2	2.35	2.25	2.45	2.1	2.3	1.7	2	1.85	1.8	1.9	1.65	2
104	Uttawar_28845	SGWD	Piezometer	27.9754	77.1843	12.7	12.72	13.35	13.15	13.45	13.3	13.58	13.7	14.65	14.35	15.15	15.05	12.65	14.15	13.05	12.75	13.45	12.55	13.65	12.25
105	Uttawar_28845	SGWD	Tube Well	27.9754	77.1843	13.8	13.94	14.4	14.25	14.85	14.3	14.5	10.15	15	14.7	16.65	16.25	16.9	16.15	18.2	18	19.1	17.85	19.35	17.6

ANNEXURE: 3
HISTORICAL WATER QUALITY (WQ) DATA OF MONITORING WELLS

State	Haryana		District	Palwal			Block				Hathin								
Month of Collection of sample for WQ monitoring*											June								
Gram Panchayat	Source	Type of well	Latitude	Longitude	Year	pH	EC	TDS	TH	Ca	Mg	Na	K	CO ₃	HCO ₃	SO ₄	Cl	F	NO ₃
Ali Brahaman_28781	Atal Jal	Pizeometer	27.9203	77.255	2024	7.9	6122	3377	443.3	119.7	35.05	761	5	2.912	387.1	401.9	1254	2.95	36
Ali Meo_28782	Atal Jal	Tubewell	27.9265	77.2461	2024	7.32	7908	4682	620.5	164.3	51.04	1055	7	1.061	538.9	489.5	1736	4	52.25
Andhop_28783	Atal Jal	Borewell	27.9025	77.2737	2024	6.47	6020	3887	510.4	136.3	41.32	876	6	0.125	449.9	395.5	1440	3.5	42.25
Andhrola_28784	Atal Jal	Tubewell	28.0245	77.2383	2024	6.94	5017	3094	410.3	108.2	34.03	697	4	0.295	359.7	302.6	1143	2.76	32.5
Babupur Hathin_28785	Atal Jal	Pizeometer	28.0297	77.1699	2024	6.82	3561	2051	268	70.18	22.53	462	3	0.149	239.8	245.7	761.8	1.7	19.5
Bahin_28786	Atal Jal	Pizeometer	27.9527	77.2636	2024	7.38	15072	9101	1206	317.9	100.1	2051	13	2.39	1058	1076	3375	8.15	107.3
Bajada Pahari_28787	Atal Jal	Tubewell	28.0471	77.2967	2024	7.44	2974	1769	230.2	60.12	19.44	399	3	0.544	209.4	146.7	653.4	1.62	16
Bhamrola Jogi_28788	Atal Jal	Handpump	28.0671	77.284	2024	7.49	8354	5179	680.5	180.4	55.9	1167	7	1.743	598.2	547.9	1919	4.5	58.5
Bhanguri Palwal_245700	Atal Jal	Pizeometer	28.0897	77.2644	2024	6.63	3564	2212	288.6	78.43	22.53	499	3	0.104	259.9	264.8	819.6	1.85	21.5
Bhimsika_28790	Atal Jal	Pizeometer	28.0041	77.1479	2024	8.04	4754	2696	360.8	94.94	30.04	608	4	3.195	306.8	322.1	1003	2.3	27.75
Bhoodpur_265002	Atal Jal	Tubewell	27.9832	77.2228	2024	7.01	2546	1553	210.2	56.11	17.01	350	2	0.173	179.8	120.5	571.7	1.42	13.25
Bichpuri_28791	Atal Jal	Borewell	28.0935	77.2379	2024	6.57	5563	3229	430.3	112.2	36.46	728	5	0.133	379.9	318.1	1195	2.9	34.25
Bighawali_28789	CGWB	Dug Well	28.1069	77.1431	2015	8.6	2615	ND	439.0	16.4	96.7	435.0	8.5	46.8	380.8	305.0	472.5	1.85	11.00
Bighawali_28789	CGWB	Dug Well	28.1069	77.1431	2016	8.1	4960	ND	970.4	198.4	115.4	760.0	8.0	0.0	169.3	785.0	1167.3	1.30	16.00
Bighawali_28789	CGWB	Dug Well	28.1069	77.1431	2017	Sample not collected from this location													
Bighawali_28789	CGWB	Dug Well	28.1069	77.1431	2018	7.71	3031	ND	598.0	63.0	107.0	421.0	6.2	0.0	446.0	285.0	584.0	1.13	42.00
Bighawali_28789	CGWB	Dug Well	28.1069	77.1431	2019	8.64	1460	ND	413.0	56.0	66.0	197.0	1.0	60.0	219.0	107.0	305.0	0.49	7.23
Bighawali_28789	CGWB	Dug Well	28.1069	77.1431	2020	8.27	3130	ND	430.8	46.3	76.6	485.0	90.0	0.0	363.1	348.0	652.3	0.61	8.60
Bighawali_28789	CGWB	Dug Well	28.1069	77.1431	2021	8.78	1521	ND	390.3	16.0	85.1	188.0	4.0	78.0	269.7	10.0	297.8	0.39	9.00
Bighawali_28789	CGWB	Dug Well	28.1069	77.1431	2022	Sample not collected from this location													
Bighawali_28789	CGWB	Dug Well	28.1069	77.1431	2023	Sample not collected from this location													
Bighawali_28789	CGWB	Dug Well	28.1069	77.1431	2024	7.95	1348	0	300.2	36.07	51.07	186	5	Nil	672	BDL	106.4	1.9	11
Buraka_265003	Atal Jal	Pizeometer	28.0375	77.2158	2024	7.52	3388	2084	278.3	74.3	22.53	470	3	0.747	239.2	250.2	771.4	1.7	19.75
Chhainsa_28792	Atal Jal	Tubewell	28.0715	77.1708	2024	6.68	6402	4004	530.4	140.3	43.75	902	6	0.211	469.8	409.8	1480	3.6	43.75
Chilli_265331	Atal Jal	Tubewell	28.0064	77.1986	2024	6.92	5248	3323	440.4	116.2	36.46	749	5	0.305	389.7	328.8	1235	2.98	35.5
Dhakalpur_28793	Atal Jal	Borewell	27.9866	77.1578	2024	6.47	3975	2274	300.2	80.16	24.3	513	3	0.072	259.9	206.2	847.4	2.02	22.25
Dhiranki_28794	Atal Jal	Pizeometer	28.028	77.1955	2024	7.68	16324	9375	1237	330.2	100.1	2113	13	4.904	1085	1109	3481	8.4	110.8
Durenchi_28795	Atal Jal	Tubewell	28.0647	77.1475	2024	6.91	4928	2978	390.3	104.2	31.6	671	4	0.267	349.7	288.3	1103	2.66	31
Firojpur rajput_28796	Atal Jal	Tubewell	28.0593	77.2413	2024	7.38	6889	4179	550.4	148.3	43.75	942	6	1.105	488.9	430	1552	3.76	46
Gadhi Vinoda_265049	Atal Jal	Pizeometer	28.0577	77.2332	2024	7.59	25854	14946	1979	524.3	162.7	3368	21	6.363	1734	885.1	5544	6.65	180
Gehlab_28797	Atal Jal	Pizeometer	28.0323	77.2783	2024	7.71	12644	7473	989.6	260.1	82.61	1684	11	4.194	865.8	885.1	2767	6.65	87
Gharrot_28798	Atal Jal	Pizeometer	28.0667	77.2118	2024	7.24	19993	12773	1691	445.8	140.2	2879	18	2.418	1478	757	4734	5.65	153
Ghigdaka_28799	Atal Jal	Tubewell	28.0603	77.2059	2024	6.33	3952	2406	320.3	84.16	26.74	542	3	0.056	279.9	221.7	888.2	2.14	24
Ghudawali_28802	Atal Jal	Borewell	27.9749	77.166	2024	7.55	11652	6504	860.7	228.4	70.49	1466	9	2.535	757.5	703.8	2409	5.7	75
Gohpur_28800	Atal Jal	Tubewell	28.0135	77.2113	2024	6.21	13766	8001	1061	280.6	87.5	1803	11	0.142	929.9	880	2971	7.05	93.5
Guraksar_28801	Atal Jal	Tubewell	28.0038	77.2238	2024	7.7	11272	6458	850.7	224.4	70.48	1455	9	3.533	746.5	699	2399	5.65	74.5
Hathin	CGWB	Tube Well	28.0458	77.2417	2015	8.56	3811	ND	643.1	32.7	136.4	640.0	5.8	93.6	380.8	485.0	743.5	0.29	14.00
Hathin	CGWB	Tube Well	28.0458	77.2417	2016	7.8	9315	ND	2476.5	291.5	424.9	1070.0	4.6	0.0	338.7	528.0	2570.8	3.20	420.00
Hathin	CGWB	Tube Well	28.0458	77.2417	2017	Sample not collected from this location													
Hathin	CGWB	Tube Well	28.0458	77.2417	2018	7.93	6824	ND	1235.0	86.0	248.0	1057.0	4.7	0.0	630.0	562.0	1570.0	1.01	257.00
Hathin	CGWB	Tube Well	28.0458	77.2417	2019	8.5	1250	ND	330.0	48.0	51.0	183.0	4.0	48.0	147.0	126.0	269.0	0.10	14.15

Atal Bhujal Yojana - Block Hydrogeological Report

Gram Panchayat	Source	Type of well	Latitude	Longitude	Year	pH	EC	TDS	TH	Ca	Mg	Na	K	CO ₃	HCO ₃	SO ₄	Cl	F	NO ₃	
Hathin	CGWB	Tube Well	28.0458	77.2417	2020	7.98	6914	ND	1631.3	96.2	338.0	860.0	5.0	0.0	317.3	271.0	2056.0	2.10	18.00	
Hathin	CGWB	Tube Well	28.0458	77.2417	2021	8.26	7331	ND	1611.3	68.1	350.2	960.0	3.5	0.0	190.4	560.0	2084.5	0.70	16.00	
Hathin	CGWB	Tube Well	28.0458	77.2417	2022	7.85	7440	ND	1680.0	74.0	363.3	975.0	4.9	0.0	178.0	587.0	2145.0	0.64	24.00	
Hathin	CGWB	Tube Well	28.0458	77.2417	2023	7.88	6997	ND	1247.0	224.0	167.0	1042.0	8.0	0.0	398.0	1987.0	738.0	0.62	18.00	
Hathin	CGWB	Tube Well	28.0458	77.2417	2024	7.68	8817	0	2132	164.3	418.3	1241	6.2	Nil	541.9	1234	2084	0.94	23	
Huchpuri_28803	Atal Jal	Tubewell	28.0524	77.1643	2024	7.16	8780	5673	750.6	200.4	60.76	1279	8	0.897	659.1	606.2	2103	4.95	64.5	
Hurithal_28804	Atal Jal	Pizeometer	28.0464	77.1899	2024	7.52	5702	3477	463.9	123.8	37.55	784	5	1.245	398.7	414.3	1292	3	37.25	
Jainpur_246072	Atal Jal	Handpump	28.0998	77.1897	2024	6.08	3209	2039	270.2	72.14	21.88	460	3	0.027	240	177.6	755.5	1.87	19.5	
Jalalpur Hathin_28805	Atal Jal	Handpump	28.0232	77.158	2024	7.14	8644	5238	690.6	184.4	55.9	1181	8	0.792	609.2	555	1940	4.55	59.25	
Janacholi_28806	Atal Jal	Pizeometer	28.0839	77.1964	2024	7.01	4485	2623	350.5	90.82	30.04	591	4	0.289	299.7	313.1	973.9	2.25	26.5	
Jarari_28807	Atal Jal	Pizeometer	27.9856	77.2119	2024	7.63	14995	8939	1185	313.7	97.64	2015	13	4.17	1036	1057	3317	8	105.3	
Kalsada_28808	Atal Jal	Pizeometer	28.0686	77.2774	2024	6.45	10065	5953	783.4	210.5	62.59	1342	9	0.183	689.8	705.3	2208	5.25	68	
Kanoli_28809	Atal Jal	Handpump	28.1649	77.1747	2024	7.88	2918	1839	240.2	64.12	19.45	414	3	1.497	208.5	155	684	1.68	16.75	
Khaika_273402	Atal Jal	Borewell	27.8836	77.2729	2024	6.71	2579	1421	190.2	48.09	17.02	320	2	0.082	169.9	105	530.9	1.3	11.75	
Khedli Jeeta_265035	Atal Jal	Handpump	28.1788	77.1786	2024	6.95	3493	2187	290.2	76.15	24.3	493	3	0.209	249.8	195.5	806.6	1.94	21.25	
Khilluka_28811	Atal Jal	Tubewell	27.9941	77.2288	2024	6.76	7373	4639	610.5	164.3	48.61	1046	7	0.292	539.7	484.8	1725	4	51.75	
Khokiyaka_28810	Atal Jal	Handpump	28.1037	77.218	2024	6.71	4283	2357	310.3	84.16	24.31	531	3	0.13	269.9	215.7	878	2.1	23.25	
Kondal_28812	Atal Jal	Handpump	28.0184	77.2759	2024	6.63	4304	2681	350.3	92.18	29.17	604	4	0.124	309.9	253.8	990.3	2.38	27.5	
Kot Mithaka_28813	CGWB	Tube Well	27.9583	77.2292	2015	7.8	3915	ND	1082.1	143.1	176.1	460.0	5.0	0.0	285.6	662.0	785.1	0.21	62.00	
Kot Mithaka_28813	CGWB	Tube Well	27.9583	77.2292	2016	8.2	4352	ND	1000.7	101.2	181.8	600.0	4.0	0.0	169.3	858.0	875.5	0.62	44.00	
Kot Mithaka_28813	CGWB	Tube Well	27.9583	77.2292	2017	Sample not collected from this location														
Kot Mithaka_28813	CGWB	Tube Well	27.9583	77.2292	2018	7.57	4686	ND	1078.0	137.0	179.0	625.0	5.0	0.0	551.0	730.0	848.0	0.34	32.00	
Kot Mithaka_28813	CGWB	Tube Well	27.9583	77.2292	2019	8.83	3080	ND	410.0	36.0	78.0	536.0	15.0	96.0	378.0	195.0	631.0	0.83	19.81	
Kot Mithaka_28813	CGWB	Tube Well	27.9583	77.2292	2020	7.76	15850	ND	2175.2	159.9	431.6	2657.0	20.0	0.0	682.6	251.0	5033.9	2.10	19.00	
Kot Mithaka_28813	CGWB	Tube Well	27.9583	77.2292	2021	8.79	4670	ND	650.5	16.0	148.4	464.0	520.0	140.4	602.9	348.0	836.6	0.33	60.00	
Kot Mithaka_28813	CGWB	Tube Well	27.9583	77.2292	2022	7.71	9281	ND	2381.9	320.6	384.3	1087.0	9.5	0.0	333.2	678.0	2637.5	0.39	16.00	
Kot Mithaka_28813	CGWB	Tube Well	27.9583	77.2292	2023	7.36	9592	ND	2347.0	540.0	242.7	1167.0	14.0	0.0	189.0	1798.0	1974.0	0.77	28.00	
Kot Mithaka_28813	CGWB	Tube Well	27.9583	77.2292	2024	8	11710	0	3153	120.2	693.1	1457	5.9	Nil	249	1641	3049	0.25	24	
Kot Mithaka_28813	Atal Jal	Pizeometer	27.9606	77.2324	2024	7.99	24525	15778	2093	553.2	172.7	3556	23	16.81	1813	934.5	5853	7.05	190.5	
Kukerchati_245701	Atal Jal	Tubewell	28.0227	77.1936	2024	6.27	4451	2661	350.3	92.18	29.17	600	4	0.054	309.9	251.4	990.3	2.38	27	
Kumrehda_265285	Atal Jal	Handpump	27.9507	77.1614	2024	7.4	7326	4136	550.4	144.3	46.18	932	6	1.133	478.9	425.2	1531	3.72	45.5	
Ladmaki_28814	Atal Jal	Tubewell	28.0363	77.1735	2024	6.81	8617	4799	630.5	168.3	51.04	1082	7	0.34	559.7	502.6	1776	4.15	53.75	
Lakhnaka_28815	CGWB	Dug Well	28.0198	77.1729	2015	8	4357	ND	888.1	163.5	116.6	490.0	186.0	0.0	178.5	563.0	1007.5	0.29	38.00	
Lakhnaka_28815	CGWB	Dug Well	28.0198	77.1729	2016	8.35	5250	ND	1061.3	178.1	149.8	760.0	0.8	33.3	79.0	845.0	1188.1	3.30	27.00	
Lakhnaka_28815	CGWB	Dug Well	28.0198	77.1729	2017	7.96	6125	ND	1341.0	184.0	214.0	1151.0	7.0	0.0	513.0	1236.0	1503.0	3.40	18.00	
Lakhnaka_28815	CGWB	Dug Well	28.0198	77.1729	2018	Sample not collected from this location														
Lakhnaka_28815	CGWB	Dug Well	28.0198	77.1729	2019	7.75	7430	ND	1991.0	489.0	187.0	762.0	87.0	0.0	183.0	751.0	1978.0	0.53	22.91	
Lakhnaka_28815	CGWB	Dug Well	28.0198	77.1729	2020	8.2	5831	ND	1166.4	126.3	206.8	840.0	6.0	0.0	232.4	704.0	1410.9	0.40	27.00	
Lakhnaka_28815	CGWB	Dug Well	28.0198	77.1729	2021	8.34	5170	ND	910.7	72.1	177.5	770.0	6.0	46.8	158.7	465.0	1304.6	2.21	25.00	
Lakhnaka_28815	CGWB	Dug Well	28.0198	77.1729	2022	7.85	7941	ND	2111.7	292.6	335.6	920.0	11.0	0.0	333.2	787.0	2098.6	1.00	38.00	
Lakhnaka_28815	CGWB	Dug Well	28.0198	77.1729	2023	7.82	7972	ND	1784.0	327.0	235.1	968.0	11.0	0.0	479.0	1958.0	1065.0	1.00	39.00	
Lakhnaka_28815	CGWB	Dug Well	28.0198	77.1729	2024	7.22	8625		1681	268.5	245.6	1260	8.79	Nil	219.7	1712	1723	1	40	
Malai_28818	Atal Jal	Borewell	28.0093	77.1639	2024	6.08	6578	4072	540.4	144.3	43.75	918	6	0.053	469.9	418.1	1511	3.66	44.5	
Malokhera_28819	Atal Jal	Pizeometer	28.068	77.2486	2024	7.78	18925	10625	1402	371.5	115.2	2395	15	6.967	1223	631.1	3944	9.55	126.3	
Maluka_28817	Atal Jal	Handpump	28.0558	77.1587	2024	6.8	7791	4933	650.5	172.3	53.47	1112	7	0.338	569.7	519.3	1828	4.25	55.5	
Mandkola_28821	CGWB	Dug Well	28.1321	77.1754	2015	8.68	2950	ND	643.1	12.3	148.8	415.0	4.4	93.6	345.1	290.0	548.9	0.97	36.00	

Atal Bhujal Yojana - Block Hydrogeological Report

Gram Panchayat	Source	Type of well	Latitude	Longitude	Year	pH	EC	TDS	TH	Ca	Mg	Na	K	CO ₃	HCO ₃	SO ₄	Cl	F	NO ₃
Mandkola_28821	CGWB	Dug Well	28.1321	77.1754	2016	8.5	3052	ND	495.3	48.6	90.9	490.0	4.7	88.8	282.2	390.0	542.0	1.84	11.00
Mandkola_28821	CGWB	Dug Well	28.1321	77.1754	2017	7.78	2830	ND	600.0	72.0	131.0	502.0	2.0	0.0	928.0	310.0	425.0	3.65	0.00
Mandkola_28821	CGWB	Dug Well	28.1321	77.1754	2018	8.35	2789	ND	539.0	20.0	119.0	411.0	4.2	39.0	538.0	180.0	507.0	1.16	25.00
Mandkola_28821	CGWB	Dug Well	28.1321	77.1754	2019	Sample not collected from this location													
Mandkola_28821	CGWB	Dug Well	28.1321	77.1754	2020	7.84	2530	ND	578.0	84.2	89.4	324.0	1.7	0.0	682.6	57.0	418.3	2.52	81.00
Mandkola_28821	CGWB	Dug Well	28.1321	77.1754	2021	8.81	1251	ND	310.2	16.0	65.7	148.0	3.0	62.4	222.1	0.0	219.8	0.36	28.00
Mandkola_28821	CGWB	Dug Well	28.1321	77.1754	2022	7.86	4301	ND	1180.9	116.2	216.4	487.0	33.0	0.0	474.1	302.0	921.7	0.64	300.00
Mandkola_28821	CGWB	Dug Well	28.1321	77.1754	2023	7.3	4218	ND	785.0	82.0	141.0	581.0	38.0	0.0	474.0	537.0	652.0	0.87	289.00
Mandkola_28821	CGWB	Dug Well	28.1321	77.1754	2024	7.79	11810	0	2092	160.3	411	1874	4.7	Nil	380.8	1287	3077	0.62	59
Mandkola_28821	Atal Jal	Pizeometer	28.1328	77.175	2024	7.71	10890	6547	865.9	231.2	70.1	1476	9	3.664	756.3	776.1	2430	5.8	75.5
Mandnaka_28816	Atal Jal	Handpump	28.1006	77.1771	2024	7.66	6670	4191	550.4	148.3	43.75	945	6	2.105	487.9	431.2	1552	3.78	46.25
Mandori_28822	Atal Jal	Handpump	28.1372	77.2042	2024	5.89	3786	2084	280.2	72.14	24.3	470	3	0.018	240	183.6	775.9	1.91	19.75
Mangorka_28823	Atal Jal	Borewell	28.0805	77.2509	2024	6.36	1567	994	130.1	36.07	9.72	224	1	0.026	120	55	367.6	0.91	6.5
Manpur_28820	Atal Jal	Pizeometer	27.9853	77.2766	2024	6.15	20231	12126	1608	425.2	132.7	2733	17	0.187	1410	718.8	4493	10.95	144.8
Mathepur_265297	Atal Jal	Tubewell	28.0671	77.1583	2024	6.82	7355	4746	630.5	168.3	51.04	1070	7	0.342	549.7	496.7	1756	4.1	53.25
Meerka_28824	Atal Jal	Tubewell	28.074	77.1395	2024	7.03	3938	2301	300.2	80.16	24.3	519	3	0.272	269.7	208.6	857.6	2.04	22.5
Mohdamka_28826	Atal Jal	Tubewell	28.0013	77.2484	2024	6.28	7022	4324	570.5	152.3	46.18	975	6	0.09	499.9	447.9	1603	3.9	47.75
Nagal Jaat_28827	Atal Jal	Pizeometer	27.9441	77.2858	2024	7.02	22832	14243	1886	499.5	155.2	3210	20	1.634	1658	843.5	5284	6.35	171.3
Nagal Sabha_28828	Atal Jal	Pizeometer	27.8991	77.2526	2024	7.71	23209	15079	2000	528.4	165.2	3398	22	8.437	1742	892.9	5593	6.7	181.8
Pachanka_28829	Atal Jal	Tubewell	28.0207	77.2228	2024	6.22	3963	2350	310.3	84.16	24.31	530	3	0.042	270	214.5	867.8	2.08	23.25
Pahadi_28831	Atal Jal	Pizeometer	27.9745	77.2551	2024	7.74	2582	1450	195.9	49.54	17.52	327	2	0.878	169.1	176.1	540	1.15	12
Pahadpur_28830	Atal Jal	Pizeometer	28.0161	77.1821	2024	7.96	14840	8424	1113	297.2	90.12	1899	12	8.401	971.6	996.3	3124	7.55	99
Pawsar_28832	Atal Jal	Tubewell	27.9425	77.2424	2024	7.37	1390	775	100.1	28.05	7.29	175	1	0.198	89.79	28.8	285.9	0.71	3.5
Pondri_28833	Atal Jal	Handpump	28.1173	77.1317	2024	7.22	2443	1517	200.2	52.1	17.01	342	2	0.281	179.7	116.9	561.5	1.39	13
Puthli_28834	Atal Jal	Pizeometer	28.0887	77.2214	2024	7.26	3562	1997	268	70.18	22.53	450	3	0.393	229.6	240.1	742.5	1.65	18.75
Raniyala Khurd_28835	Atal Jal	Tubewell	27.9539	77.2115	2024	6.42	13395	7715	1021	268.5	85.07	1739	11	0.223	899.8	846.7	2859	6.8	90.25
Ransika_28836	Atal Jal	Handpump	28.0414	77.1509	2024	6.87	2893	1815	240.2	64.12	19.45	409	3	0.146	209.9	151.4	673.8	1.66	16.5
Reebar_28837	Atal Jal	Pizeometer	28.1267	77.1605	2024	7.73	23709	15290	2020	536.6	165.2	3446	22	8.986	1771	905.3	5670	6.8	184.3
Rindka_28838	Atal Jal	Borewell	28.0521	77.249	2024	7.13	4789	2954	390.3	104.2	31.6	666	4	0.431	339.6	286	1092	2.64	30.75
Roopnagar Natoli_246073	Atal Jal	Pizeometer	27.9217	77.2243	2024	7.66	26718	16679	2206	586.2	180.3	3759	24	8.335	1932	987.3	6190	7.45	201.8
Roopraka_28840	Atal Jal	Pizeometer	27.9986	77.1973	2024	7.22	4781	2900	381.4	103.2	30.04	654	4	0.53	339.5	345.7	1080	2.5	30
Sapanki_28841	Atal Jal	Borewell	28.0866	77.2378	2024	6.67	5511	3575	470.4	124.2	38.89	806	5	0.185	419.8	358.6	1327	3.2	38.5
Saroli_28842	Atal Jal	Handpump	28.1724	77.1904	2024	7.22	5634	3276	430.3	116.2	34.02	738	5	0.593	379.4	324	1215	2.94	34.75
Swamika_28843	Atal Jal	Tubewell	28.0567	77.2005	2024	6.44	4159	2553	340.3	88.17	29.17	575	4	0.078	299.9	238.3	949.5	2.28	25.75
Teharaki_28910	CGWB	Dug Well	28.2042	77.2389	2015	8.65	2362	ND	398.1	8.2	91.8	385.0	8.0	46.8	487.9	272.0	333.5	2.10	9.10
Teharaki_28910	CGWB	Dug Well	28.2042	77.2389	2016	8.4	4430	ND	545.8	76.9	86.0	800.0	9.6	66.6	485.4	542.0	701.8	1.06	278.00
Teharaki_28910	CGWB	Dug Well	28.2042	77.2389	2017	7.6	4380	ND	1241.0	216.0	170.0	570.0	9.0	0.0	366.0	789.0	950.0	0.50	35.00
Teharaki_28910	CGWB	Dug Well	28.2042	77.2389	2018	7.61	3392	ND	667.0	82.0	112.0	524.0	8.6	0.0	577.0	237.0	730.0	0.29	84.00
Teharaki_28910	CGWB	Dug Well	28.2042	77.2389	2019	Sample not collected from this location													
Teharaki_28910	CGWB	Dug Well	28.2042	77.2389	2020	8.07	3437	ND	710.6	56.1	138.6	479.0	8.3	0.0	280.7	305.0	822.4	0.62	42.00
Teharaki_28910	CGWB	Dug Well	28.2042	77.2389	2021	8.55	3715	ND	680.3	37.2	142.8	560.0	2.5	46.8	111.1	376.0	921.7	0.14	39.00
Teharaki_28910	CGWB	Dug Well	28.2042	77.2389	2022	7.89	3881	ND	710.6	76.2	126.5	607.0	11.0	0.0	461.3	354.0	850.8	0.30	68.00
Teharaki_28910	CGWB	Dug Well	28.2042	77.2389	2023	7.89	3401	ND	530.0	87.0	76.0	524.0	7.1	0.0	440.0	487.0	522.0	0.68	109.00
Teharaki_28910	CGWB	Dug Well	28.2042	77.2389	2024	8.39	3932	0	570.5	24.05	124	610	8.9	28.8	292.9	397	822.4	0.28	49
Tonka_28844	Atal Jal	Handpump	27.9648	77.1546	2024	7.27	6151	3665	480.4	128.3	38.89	826	5	0.753	429.2	369.3	1358	3.28	39.75
Uttawar_28845	Atal Jal	Borewell	27.9882	77.1854	2024	7.09	1436	872	120.1	32.06	9.72	197	1	0.116	99.88	40.7	326.7	0.8	4.75

Name of District	Name of Block	Source	Name of village/ OW data	Latitude	Longitude	EC June 2020	EC June-2021	EC June-2022	EC June-2023	EC June-2024
Palwal_619	Hathin_466	Atal Jal	Ali Brahaman_28781	27.9203	77.255	ND	ND	ND	ND	6122
Palwal_619	Hathin_466	Atal Jal	Ali Meo_28782	27.9265	77.2461	ND	ND	ND	ND	7908
Palwal_619	Hathin_466	SGWB	ALIMEO	27.9257	77.2471	2700	ND	3400	3400	3500
Palwal_619	Hathin_466	SGWB	ANDHOP	27.9051	77.27	3900	ND	2300	3000	3100
Palwal_619	Hathin_466	Atal Jal	Andhop_28783	27.9025	77.2737	ND	ND	ND	ND	6020
Palwal_619	Hathin_466	Atal Jal	Andhrola_28784	28.0245	77.2383	ND	ND	ND	ND	5017
Palwal_619	Hathin_466	Atal Jal	Babupur Hathin_28785	28.0297	77.1699	ND	ND	ND	ND	3561
Palwal_619	Hathin_466	SGWB	BAHIN	27.9534	77.2636	1850	1900	1700	1400	1500
Palwal_619	Hathin_466	Atal Jal	Bahin_28786	27.9527	77.2636	ND	ND	ND	ND	15072
Palwal_619	Hathin_466	Atal Jal	Bajada Pahari_28787	28.0471	77.2967	ND	ND	ND	ND	2974
Palwal_619	Hathin_466	SGWB	BAJIDA PAHARI	28.0483	77.2916	1800	2000	3000	2100	2200
Palwal_619	Hathin_466	Atal Jal	Bhamrola Jogi_28788	28.0671	77.284	ND	ND	ND	ND	8354
Palwal_619	Hathin_466	SGWB	BHANGURI	28.0883	77.264	6300	4800	4800	5100	5000
Palwal_619	Hathin_466	Atal Jal	Bhanguri Palwal_245700	28.0897	77.2644	ND	ND	ND	ND	3564
Palwal_619	Hathin_466	Atal Jal	Bhimsika_28790	28.0041	77.1479	ND	ND	ND	ND	4754
Palwal_619	Hathin_466	Atal Jal	Bhoodpur_265002	27.9832	77.2228	ND	ND	ND	ND	2546
Palwal_619	Hathin_466	SGWB	BHOPAWALI	28.0874	77.1507	1700	ND	2200	2150	2200
Palwal_619	Hathin_466	SGWB	BIBIPUR	28.0311	77.1676	1900	ND	3200	2750	2800
Palwal_619	Hathin_466	Atal Jal	Bichpuri_28791	28.0935	77.2379	ND	ND	ND	ND	5563
Palwal_619	Hathin_466	Atal Jal	Buraka_265003	28.0375	77.2158	ND	ND	ND	ND	3388
Palwal_619	Hathin_466	SGWB	CHAINSSA	28.0717	77.1737	3100	8000	8200	5000	8200
Palwal_619	Hathin_466	Atal Jal	Chhainsa_28792	28.0715	77.1708	ND	ND	ND	ND	6402
Palwal_619	Hathin_466	Atal Jal	Chilli_265331	28.0064	77.1986	ND	ND	ND	ND	5248
Palwal_619	Hathin_466	Atal Jal	Dhakalpur_28793	27.9866	77.1578	ND	ND	ND	ND	3975
Palwal_619	Hathin_466	Atal Jal	Dhiranki_28794	28.028	77.1955	ND	ND	ND	ND	16324
Palwal_619	Hathin_466	Atal Jal	Durenchi_28795	28.0647	77.1475	ND	ND	ND	ND	4928
Palwal_619	Hathin_466	Atal Jal	Firojpur rajput_28796	28.0593	77.2413	ND	ND	ND	ND	6889
Palwal_619	Hathin_466	Atal Jal	Gadhi Vinoda_265049	28.0577	77.2332	ND	ND	ND	ND	25854
Palwal_619	Hathin_466	Atal Jal	Gehlab_28797	28.0323	77.2783	ND	ND	ND	ND	12644
Palwal_619	Hathin_466	SGWB	GHARROT	28.078	77.2103	6500	2000	1800	2350	2400
Palwal_619	Hathin_466	Atal Jal	Gharrot_28798	28.0667	77.2118	ND	ND	ND	ND	19993
Palwal_619	Hathin_466	Atal Jal	Ghigdaka_28799	28.0603	77.2059	ND	ND	ND	ND	3952
Palwal_619	Hathin_466	Atal Jal	Ghudawali_28802	27.9749	77.166	ND	ND	ND	ND	11652
Palwal_619	Hathin_466	SGWB	GOHPUR	28.0142	77.2121	5600	ND	1900	3900	3900
Palwal_619	Hathin_466	Atal Jal	Gohpur_28800	28.0135	77.2113	ND	ND	ND	ND	13766
Palwal_619	Hathin_466	Atal Jal	Guraksar_28801	28.0038	77.2238	ND	ND	ND	ND	11272
Palwal_619	Hathin_466	SGWB	HATHIN	28.0281	77.2318	3100	4100	5000	3250	3300
Palwal_619	Hathin_466	SGWB	HATHIN	28.035	77.2317	1350	ND	4000	3250	3300
Palwal_619	Hathin_466	Atal Jal	Huchpuri_28803	28.0524	77.1643	ND	ND	ND	ND	8780
Palwal_619	Hathin_466	Atal Jal	Hurithal_28804	28.0464	77.1899	ND	ND	ND	ND	5702
Palwal_619	Hathin_466	Atal Jal	Jainpur_246072	28.0998	77.1897	ND	ND	ND	ND	3209
Palwal_619	Hathin_466	Atal Jal	Jalalpur Hathin_28805	28.0232	77.158	ND	ND	ND	ND	8644
Palwal_619	Hathin_466	Atal Jal	Janacholi_28806	28.0839	77.1964	ND	ND	ND	ND	4485
Palwal_619	Hathin_466	Atal Jal	Jarari_28807	27.9856	77.2119	ND	ND	ND	ND	14995
Palwal_619	Hathin_466	Atal Jal	Kalsada_28808	28.0686	77.2774	ND	ND	ND	ND	10065
Palwal_619	Hathin_466	Atal Jal	Kanoli_28809	28.1649	77.1747	ND	ND	ND	ND	2918

Atal Bhujal Yojana - Block Hydrogeological Report

Name of District	Name of Block	Source	Name of village/ OW data	Latitude	Longitude	EC June 2020	EC June-2021	EC June-2022	EC June-2023	EC June-2024
Palwal_619	Hathin_466	Atal Jal	Khaika_273402	27.8836	77.2729	ND	ND	ND	ND	2579
Palwal_619	Hathin_466	SGWB	KHANOEWALI	28.0215	77.2226	4400	ND	4500	2900	3000
Palwal_619	Hathin_466	Atal Jal	Khedli Jeeta_265035	28.1788	77.1786	ND	ND	ND	ND	3493
Palwal_619	Hathin_466	SGWB	KHIKA HATHIN	27.8861	77.2723	1430	5300	5600	3900	4000
Palwal_619	Hathin_466	Atal Jal	Khilluka_28811	27.9941	77.2288	ND	ND	ND	ND	7373
Palwal_619	Hathin_466	Atal Jal	Khokiyaka_28810	28.1037	77.218	ND	ND	ND	ND	4283
Palwal_619	Hathin_466	SGWB	KONDAL	28.011	77.2624	2500	2600	8800	1650	1700
Palwal_619	Hathin_466	Atal Jal	Kondal_28812	28.0184	77.2759	ND	ND	ND	ND	4304
Palwal_619	Hathin_466	Atal Jal	Kot Mithaka_28813	27.9606	77.2324	ND	ND	ND	ND	24525
Palwal_619	Hathin_466	SGWB	KUKARCHATI	28.0204	77.1925	5200	2750	3100	2500	3000
Palwal_619	Hathin_466	Atal Jal	Kukerchati_245701	28.0227	77.1936	ND	ND	ND	ND	4451
Palwal_619	Hathin_466	Atal Jal	Kumrehda_265285	27.9507	77.1614	ND	ND	ND	ND	7326
Palwal_619	Hathin_466	Atal Jal	Ladmaki_28814	28.0363	77.1735	ND	ND	ND	ND	8617
Palwal_619	Hathin_466	Atal Jal	Malai_28818	28.0093	77.1639	ND	ND	ND	ND	6578
Palwal_619	Hathin_466	Atal Jal	Malokhera_28819	28.068	77.2486	ND	ND	ND	ND	18925
Palwal_619	Hathin_466	Atal Jal	Maluka_28817	28.0558	77.1587	ND	ND	ND	ND	7791
Palwal_619	Hathin_466	SGWB	MANDKOLA	28.1329	77.1741	8000	3150	3600	2050	2100
Palwal_619	Hathin_466	SGWB	MANDKOLA	28.1329	77.1741	ND	ND	3400	2050	2100
Palwal_619	Hathin_466	Atal Jal	Mandkola_28821	28.1328	77.175	ND	ND	ND	ND	10890
Palwal_619	Hathin_466	SGWB	MANDNAKA	28.1002	77.1767	2400	ND	3300	3000	3100
Palwal_619	Hathin_466	Atal Jal	Mandnaka_28816	28.1006	77.1771	ND	ND	ND	ND	6670
Palwal_619	Hathin_466	Atal Jal	Mandori_28822	28.1372	77.2042	ND	ND	ND	ND	3786
Palwal_619	Hathin_466	Atal Jal	Mangorka_28823	28.0805	77.2509	ND	ND	ND	ND	1567
Palwal_619	Hathin_466	SGWB	MANPUR	27.98	77.28	3000	4700	4600	4000	4000
Palwal_619	Hathin_466	Atal Jal	Manpur_28820	27.9853	77.2766	ND	ND	ND	ND	20231
Palwal_619	Hathin_466	Atal Jal	Mathepur_265297	28.0671	77.1583	ND	ND	ND	ND	7355
Palwal_619	Hathin_466	Atal Jal	Meerka_28824	28.074	77.1395	ND	ND	ND	ND	3938
Palwal_619	Hathin_466	Atal Jal	Mohdamka_28826	28.0013	77.2484	ND	ND	ND	ND	7022
Palwal_619	Hathin_466	Atal Jal	Nagal Jaat_28827	27.9441	77.2858	ND	ND	ND	ND	22832
Palwal_619	Hathin_466	Atal Jal	Nagal Sabha_28828	27.8991	77.2526	ND	ND	ND	ND	23209
Palwal_619	Hathin_466	SGWB	NANGAL JAT	27.9408	77.2778	1850	ND	3400	2150	2200
Palwal_619	Hathin_466	Atal Jal	Pachanka_28829	28.0207	77.2228	ND	ND	ND	ND	3963
Palwal_619	Hathin_466	Atal Jal	Pahadi_28831	27.9745	77.2551	ND	ND	ND	ND	2582
Palwal_619	Hathin_466	Atal Jal	Pahadpur_28830	28.0161	77.1821	ND	ND	ND	ND	14840
Palwal_619	Hathin_466	Atal Jal	Pawsar_28832	27.9425	77.2424	ND	ND	ND	ND	1390
Palwal_619	Hathin_466	SGWB	PONDRI	28.1178	77.1365	3900	7000	6200	5500	5500
Palwal_619	Hathin_466	Atal Jal	Pondri_28833	28.1173	77.1317	ND	ND	ND	ND	2443
Palwal_619	Hathin_466	Atal Jal	Puthli_28834	28.0887	77.2214	ND	ND	ND	ND	3562
Palwal_619	Hathin_466	Atal Jal	Raniyala Khurd_28835	27.9539	77.2115	ND	ND	ND	ND	13395
Palwal_619	Hathin_466	Atal Jal	Ransika_28836	28.0414	77.1509	ND	ND	ND	ND	2893
Palwal_619	Hathin_466	Atal Jal	Reebar_28837	28.1267	77.1605	ND	ND	ND	ND	23709
Palwal_619	Hathin_466	Atal Jal	Rindka_28838	28.0521	77.249	ND	ND	ND	ND	4789
Palwal_619	Hathin_466	Atal Jal	Roopnagar Natoli_246073	27.9217	77.2243	ND	ND	ND	ND	26718
Palwal_619	Hathin_466	Atal Jal	Roopraka_28840	27.9986	77.1973	ND	ND	ND	ND	4781
Palwal_619	Hathin_466	Atal Jal	Sapanki_28841	28.0866	77.2378	ND	ND	ND	ND	5511
Palwal_619	Hathin_466	Atal Jal	Saroli_28842	28.1724	77.1904	ND	ND	ND	ND	5634

Atal Bhujal Yojana - Block Hydrogeological Report

Name of District	Name of Block	Source	Name of village/ OW data	Latitude	Longitude	EC June 2020	EC June-2021	EC June-2022	EC June-2023	EC June-2024
Palwal_619	Hathin_466	Atal Jal	Swamika_28843	28.0567	77.2005	ND	ND	ND	ND	4159
Palwal_619	Hathin_466	SGWB	TONKA	27.9625	77.1521	2300	ND	2800	2300	2400
Palwal_619	Hathin_466	Atal Jal	Tonka_28844	27.9648	77.1546	ND	ND	ND	ND	6151
Palwal_619	Hathin_466	SGWB	UTTAWAR	27.9754	77.1843	1800	ND	2800	2400	2400
Palwal_619	Hathin_466	SGWB	UTTAWAR	27.9756	77.1858	ND	ND	2300	2400	2400
Palwal_619	Hathin_466	Atal Jal	Uttawar_28845	27.9882	77.1854	ND	ND	ND	ND	1436