

ATAL BHUJAL YOJANA (AtalJal)

State : HARYANA

**Department : IRRIGATION & WATER
RESOURCE DEPARTMENT**

BLOCK : RANIA

DISTRICT : SIRSA

YEAR : 2024-2025

*Towards partial fulfilment of requirements for Disbursement of
Incentive under DLI -1*

HYDROGEOLOGICAL REPORT

(YEAR: 2024-25)

STATE	:	HARYANA
DISTRICT	:	SIRSA
BLOCK/TALUK	:	RANIA
BLOCK/TALUK HQs	:	RANIA

A		GENERAL INFORMATION			
1.	Geographical area (Ha)	:	55780		
2.	No. of Gram Panchayats	:	45		
3.	No. of towns	:	1		
4.	No. of villages	:	50		
5.	Population (2011)	:	Male	Female	Total
			69165	65149	134314
6.	Rainfall (mm)(2023)	:	Monsoon	Non-monsoon	Annual
			168	166	334
7.	River basin	:	Ghaggar river basin		
8.	Major soil types	:	Loamy Sand		

B		LAND USE		
1.	Forest area (Ha)	:	0	
2.	Cultivable area (Ha)	:	48379	
3.	Net sown area (Ha)	:	32247	
4.	Gross cropped area (Ha)	:	93219	

C		CROPPING PATTERN (As in 2022-23)				
1.	Major crops grown	:	Kharif	Rabi	Summer	Perennial
			Paddy	Wheat	Pulses	NA
			Cotton	Gram	Tomato	
			Bajra	Barley	Vegetable	
				Oil Seed		

D		IRRIGATION FACILITIES (As in 2023-24)					
1.	Net irrigated area (Ha)	:	32247				
2.	Gross irrigated area (Ha)	:	93219				
3.	Area under irrigation (Ha) (Source-wise)	:	DW	BW/TW	Tanks/Ponds	Canals	Others
			-	15501	-	16751	-

E		GEOLOGY & HYDROGEOLOGY		
1.	Predominant rocktype	:	Sand, Silt, Clay & Kankar	
2.	Major geological formations	:	Older Alluvium	
3.	Important water-bearing formations	:	Coarse grain sand	
4.	Status of coverage under NAQUIM	:	Covered	

AtalBhujalYojana - Block Hydrogeological Report

F GROUND WATER CONDITIONS										
1	No. of wells used for Water Level (WL) monitoring.	Open wells				BW/TW/ PZ				
		CGWB	SGWB	Atal Jal	Total	CGWB	SGWB	Atal Jal	Total	
		0	4	0	4	3	18	66	87	
2	Monitoring mechanism (Nos.)	Manual			DWLR			Telemetry		
		CGWB	SGW B	Atal Jal	CGW B	SGW B	Atal Jal	CGW B	SGW B	Atal Jal
		3	22	34	0	0	32	0	0	32
3	Monitoring frequency	Agency	No. of times monitored/year							
		CGWB	2 times/year Pre and Post Monsoon							
		SGWB	2 times/year Pre and Post Monsoon							
		Atal Jal	2 times/year Pre and Post Monsoon							
4	Period of water level data availability.	Agency	Period of WL data availability (From - To)							
			From (year)			To (year)				
		CGWB	2015			2024				
		SGWB	2015			2024				
		Atal Jal	2023			2024				
5	Water level range (m.bgl) Pre-monsoon (May – June 2024) Post-monsoon (Oct/Nov 2024)	Minimum/Village			Maximum/Village					
		8.1/Moranwali_32782 (Peerkhhera)			56.85/Rampur Their_32783					
		7.94/Moranwali_32782 (Peerkhhera)			58.15/Bahia_32739					
6	Seasonal WL fluctuation range (m)	Minimum/ Village			Maximum/ Village					
		-7.88/Kussar_32767			7.37/Dhottar_32753					

G GROUND WATER QUALITY									
1	No. of wells used for Water Quality (WQ) monitoring.	Open Wells				BW/TW/ PZ			
		CGWB	SGWB	Atal Jal	Total	CGWB	SGWB	Atal Jal	Total
		0	5	0	5	2	22	45	69
2	Monitoring frequency	Agency	No. of times monitored/year						
		CGWB	1 time/year						
		SGWB	1 time/year						
		Atal Jal	1 time/year						
3	Period of water quality data availability	Agency	Period of WQ data availability (Years)						
		CGWB	2015 to 2024						
		SGWB	2020 to 2024						
		Atal Jal	2023 to 2024						
4	Parameters analysed	Agency	Parameters Analysed						
		CGWB	pH,EC,TH,Ca,Mg,Na,K,CO ₃ ,HCO ₃ ,SO ₄ ,Cl,F,NO ₃						
		SGWB	EC						
		Atal Jal	pH,EC,TDS,TH,Ca,Mg,Na,K,CO ₃ ,HCO ₃ ,SO ₄ ,Cl,F,NO ₃						
5	Known ground water quality issues, if any	No Such Issue							

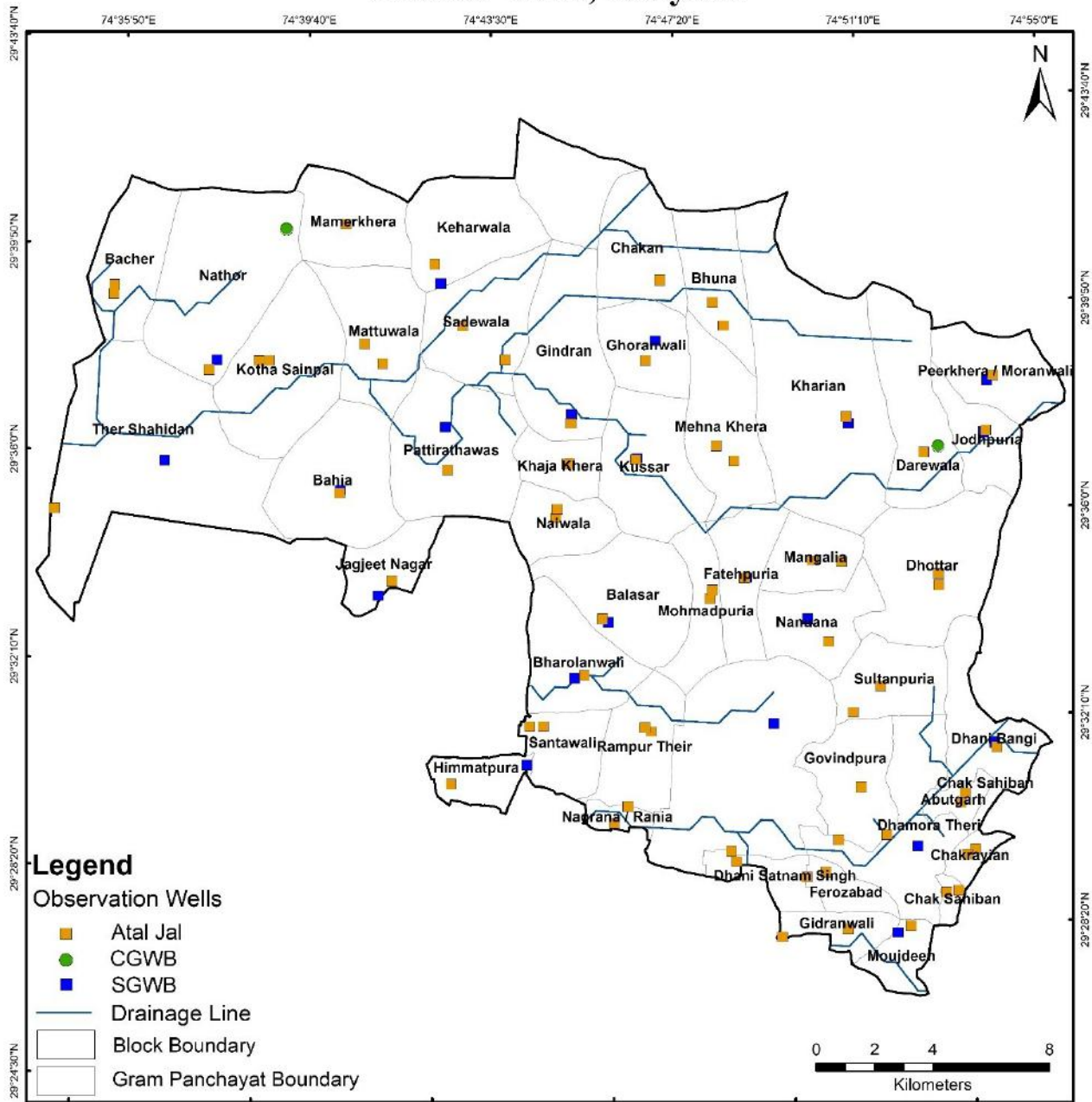
H. GROUND WATER RESOURCES									
1.	Latest assessment year	:	2023						
2.	Assessment Unit	:	Block						
3.	Annual extractable GW resource (ha.m)	:	9264.7						
4.	Current annual GW extraction (ha.m)	:	19006.6						
5.	Net GW availability for future use (ha.m)	:	0.0						
6.	Stage of GW extraction (%)	:	147.84 %						
7.	Category of block/taluk/(2023)	:	Over Exploited						
8.	Category of block/taluk/ in previous assessments		2023	2020	2017	2013	2011	2009	2004
			Over Exploited	Over Exploited	Over Exploited	Over Exploited	Over Exploited	Over Exploited	Over Exploited

I WATER-RELATED SCHEMES		
1.	Schemes with a bearing on ground water, being implemented in the block / taluk.	
	Centrally Sponsored /Central Sector Schemes	i) PMKSY
		ii) JJM
		iii) MNREGA
		iv) RKVY
	State Schemes	i) State Plan Scheme (Head 2402)
		ii) MPMV

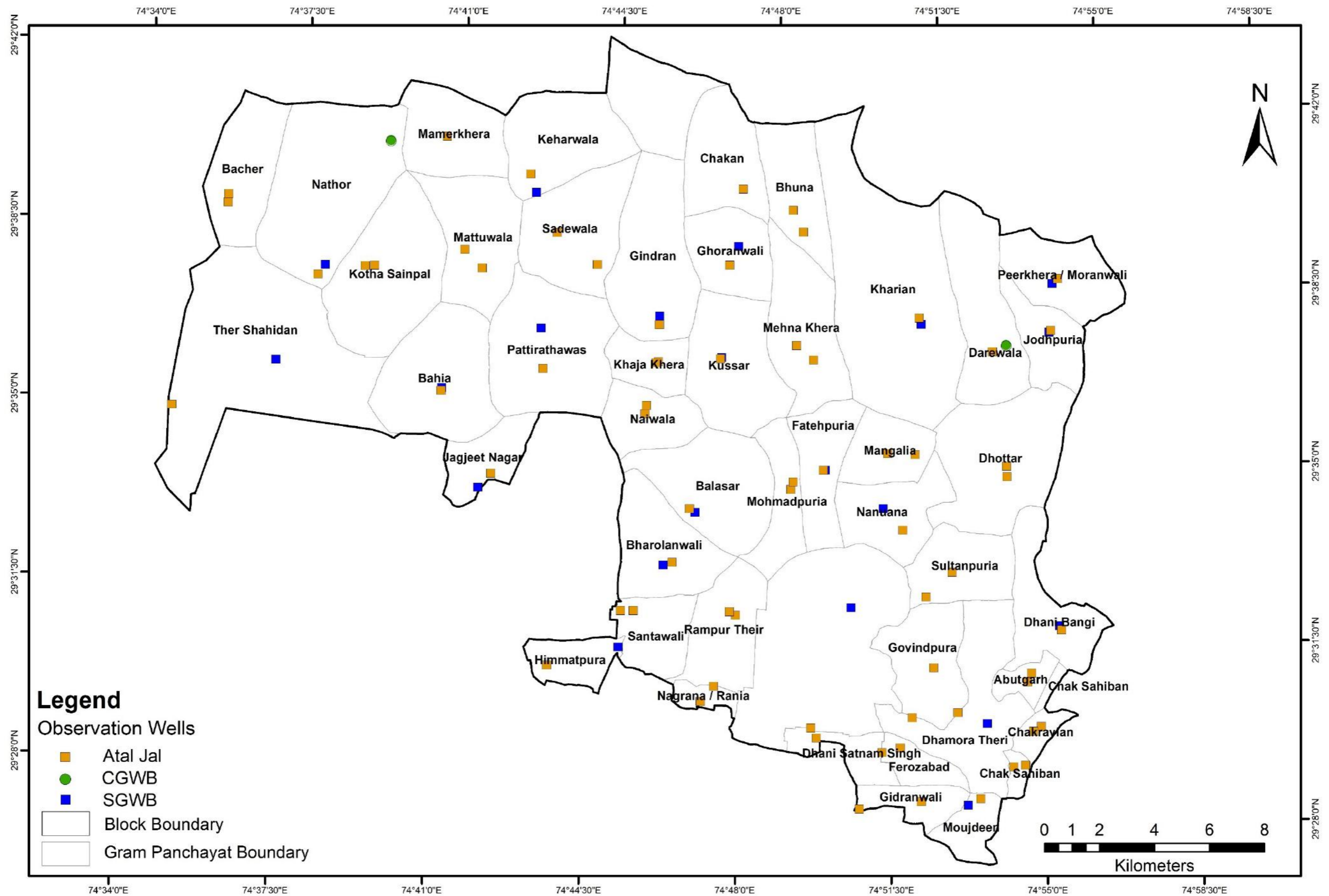
J GROUND WATER RELATED ISSUES		
1.	Ground water related issues of the block	
	i) Issues related to GW availability	: Due over exploitation of Groundwater, subsequently the present stage of ground water extraction is 148%
	ii) Issues related to GW quality	: Sulphate contamination is observed in the groundwater with increasing salinity from fresh to high.
	iii) Other issues if any.	: No

K ANNEXURES	
I.	Basic data of observation wells – Attached
II.	Historical water level data – Attached
III.	Historical water quality data – Attached

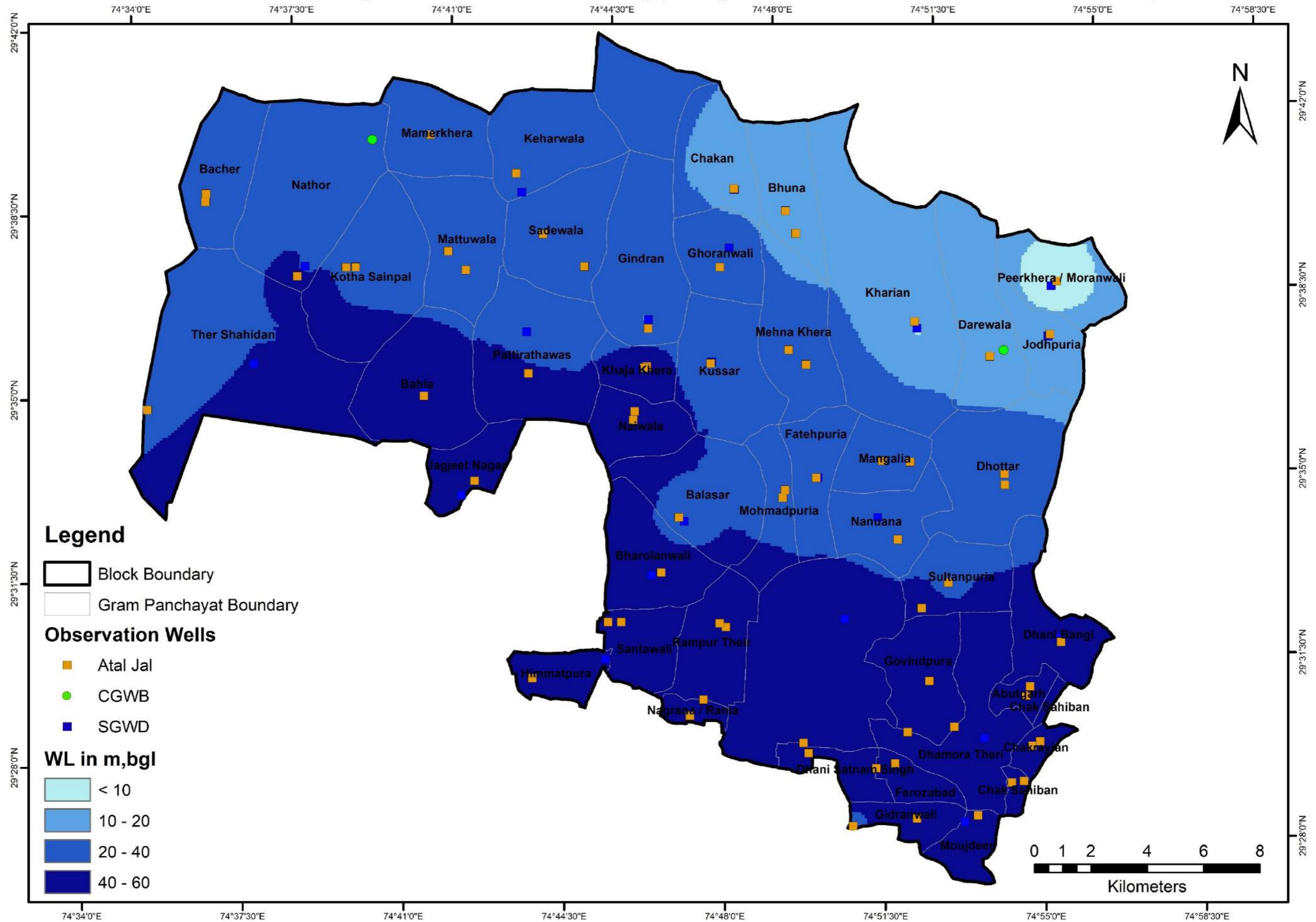
Location Map of Block- Rania, District- Sirsa, Haryana



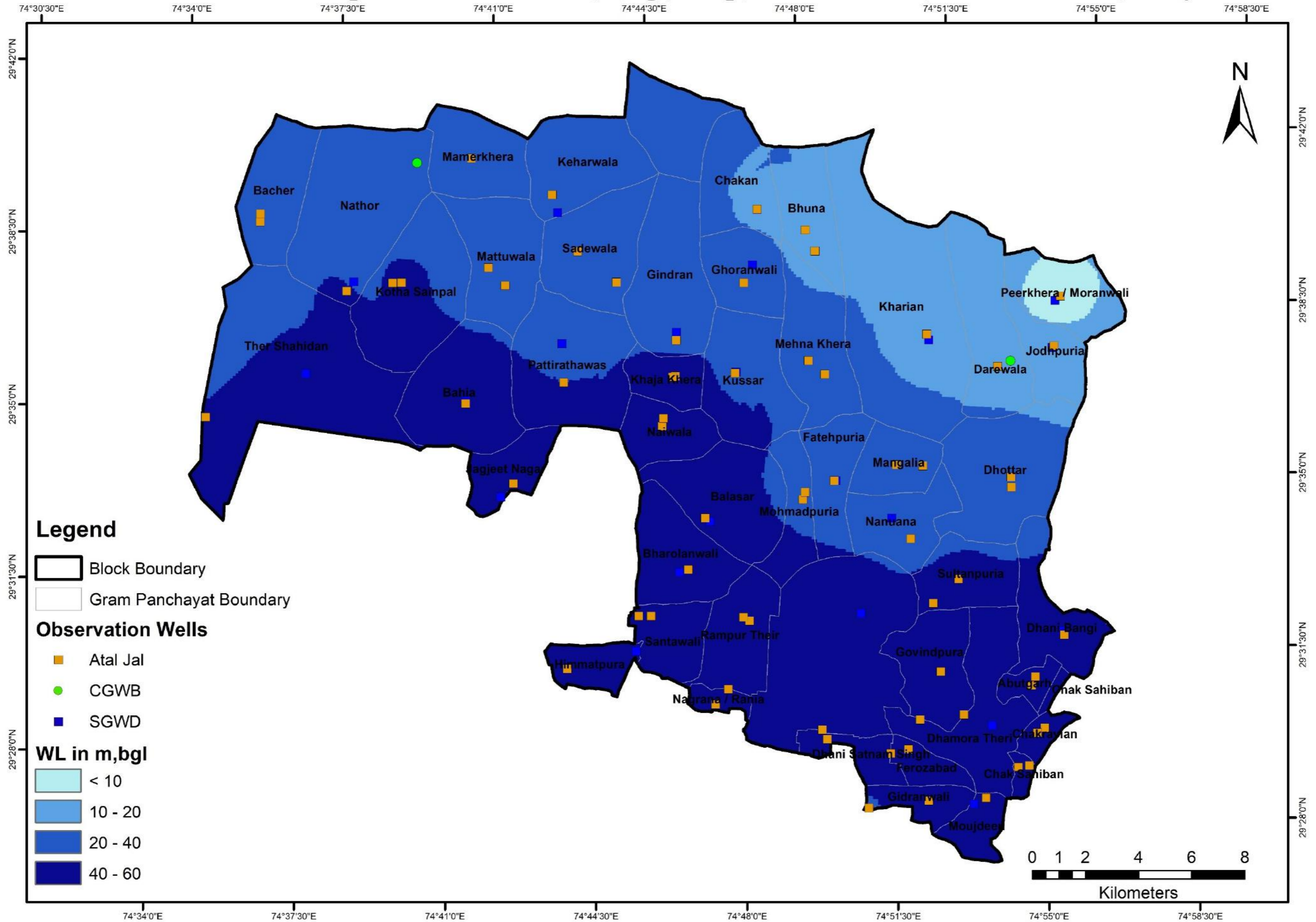
Location of Observation Wells for Monitoring Water Levels and Water Quality, Block-Rania, District- Sirsa, Haryana



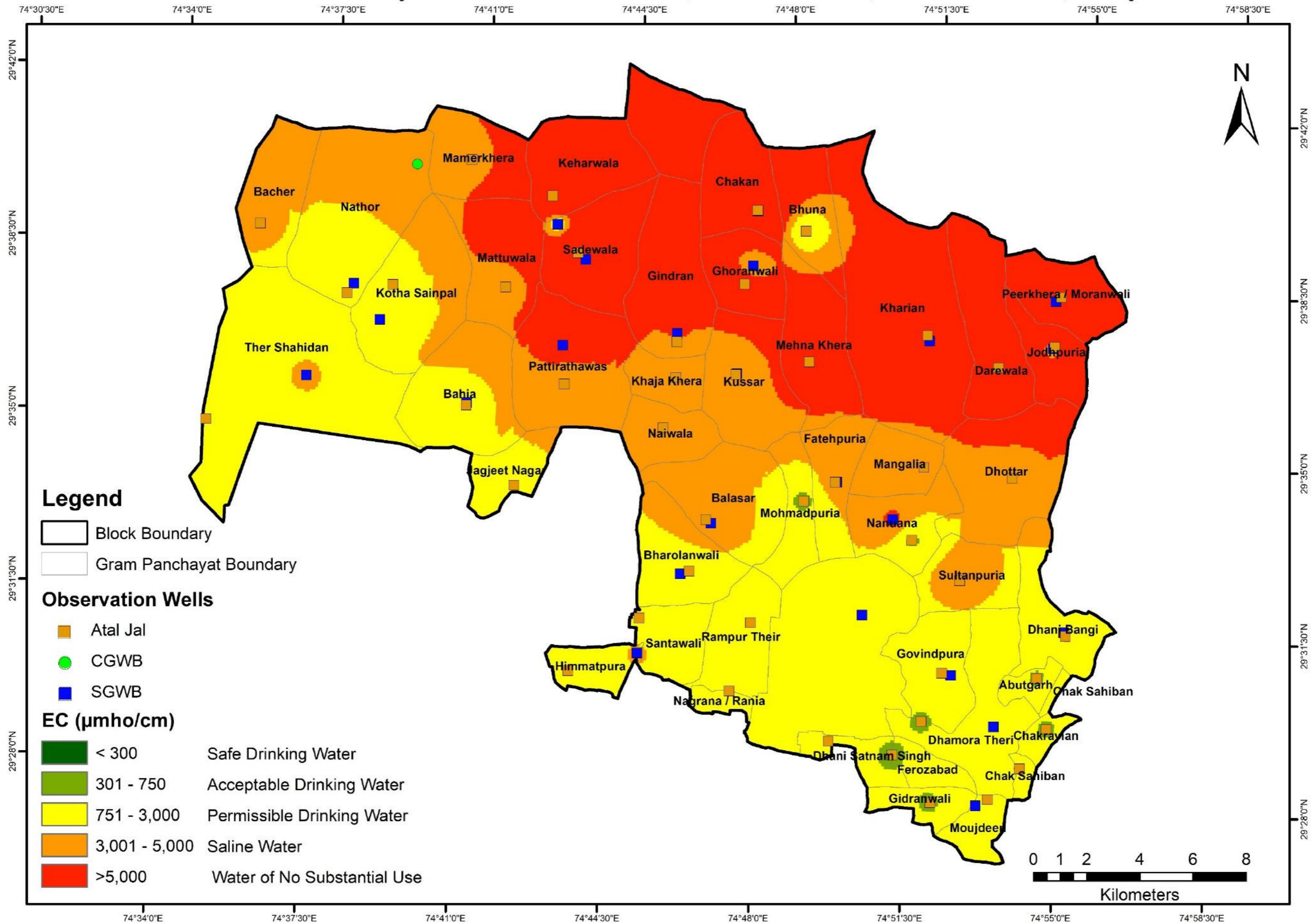
Pre Monsoon 2024 Depth to Water Level (m,bgl) Map, Block - Rania, District - Sirsa, Haryana



Post Monsoon 2024 Depth to Water Level (m,bgl) Map, Block - Rania, District - Sirsa, Haryana



Electrical Conductivity of Groundwater-2024, Block - Rania, District - Sirsa, Haryana



ANNEXURE: 1
BASIC DATA OF MONITORING WELLS

State	Haryana				District	Sirsa			Block	Rania					
S.No	Well ID	Gram Panchayat	Name of the village	Site Name	Latitude	Longitude	Type of Well	Reduced Level	Aquifer Type/Lithology	Height of Measuring (m, agl)	Depth (m,bgl)	Diameter (m)	Purpose of Monitoring (WL/WQ)	Monitoring Mechanism	Agency
1.	HR_GW_867	Abutgarh_32737	Abutgarh	Govt. Primary School, Abutgarh	29.5098	74.9068	Piezometer	200	Semi Confined to Confined	0.50	102	0.10	Both	Telemetric	Atal Jal
2.	GWL-06-074-00551-00032737-001	Abutgarh_32737	Abutgarh	Abutgarh Guru Dwara K Pass	29.5069	74.9055	Tube Well	204	Semi Confined to Confined	0.20	107	0.25	WL	Manual	Atal Jal-Private
3.	HR_GW_849	Bacher_32738	Bacher	Shamudayik Kendra, Bacher	29.6494	74.5975	Piezometer	189	Semi Confined to Confined	0.50	100	0.10	Both	Telemetric	Atal Jal
4.	GWL-06-074-00551-00032738-001	Bacher_32738	Bacher	Pond Ki Pass	29.6521	74.5975	Bore Well	192	Semi Confined to Confined	0.00	76	0.25	WL	Manual	Atal Jal-Private
5.	HR_GW_868	Bahia_32739	Bahia	Stadium Play Ground, Bahia	29.5918	74.6808	Piezometer	194	Semi Confined to Confined	0.50	101	0.10	Both	Telemetric	Atal Jal
6.	SIR_RAN_BALASAR_1	Balasar_32740	Balasar	Surja Ram	29.5575	74.7758	Tube Well	199	Unconfined Aquifer/ sand, Clay, Kankar	0.10	72	0.25	WQ	Manual	Atal Jal
7.	HR_GW_866	Bharolanwali_32742	Bharolanwali	Govt Girls Primary School, Bharolanwali	29.5397	74.7705	Piezometer	195	Semi Confined to Confined	0.50	104	0.10	Both	Telemetric	Atal Jal
8.	HR_GW_850	Bhuna_32743	Bhuna	Shamshan Ghat , Bhuna	29.6567	74.8086	Piezometer	197	Semi Confined to Confined	0.50	66	0.10	Both	Telemetric	Atal Jal
9.	GWL-06-074-00551-00032743-001	Bhuna_32743	Bhuna	Mehna Road	29.6497	74.8128	Tube Well	198	Semi Confined to Confined	0.40	30	0.25	WL	Manual	Atal Jal-Private
10.	GWL-06-074-00551-00032746-001	Chak Sahiban_32746	Chaksahiba	Chaksahiba Johad Ke Uper	29.4797	74.9063	Bore Well	198	Semi Confined to Confined	0.00	60	0.25	WL	Manual	Atal Jal-Private
11.	SIR_RAN_CHAKSAHIBA_1	Chak Sahiban_32746	Chaksahiba	Gurnam Singh	29.4790	74.9020	Tube Well	198	Unconfined Aquifer/ sand, Clay, Kankar	0.00	69	0.25	WQ	Manual	Atal Jal
12.	HR_GW_860	Chakan_32744	Chakkan	Govt. Girls Middel School Chakkan	29.6628	74.7895	Piezometer	196	Semi Confined to Confined	0.50	88	0.10	Both	Telemetric	Atal Jal
13.	HR_GW_869	Chakrayian_32745	Chakrayian	Govt. Primary School Chakrayian	29.4926	74.9114	Piezometer	199	Semi Confined to Confined	0.50	97	0.10	Both	Telemetric	Atal Jal
14.	GWL-06-074-00551-00032745-001	Chakrayian_32745	Chakrayian	Chakrayian School Me	29.4909	74.9086	Tube Well	200	Semi Confined to Confined	0.60	105	0.25	WL	Manual	Atal Jal-Private
15.	SIR_RAN_DAREWALA_1	Darewala_32747	Darewala	Dhuni Ram	29.6140	74.8857	Tube Well	201	Unconfined Aquifer/ sand, Clay, Kankar	0.45	122	0.25	WQ	Manual	Atal Jal
16.	HR_GW_851	Dhamora Theri_32748	Damora Their	Shamshan Ghat, Damora Their	29.4932	74.8631	Piezometer	196	Semi Confined to Confined	0.50	101	0.10	Both	Telemetric	Atal Jal
17.	HR_GW_852	Dhani Bangi_32749	Dhanoor	Govt Sr. Sec. School, Dhani Bangi	29.5245	74.9170	Piezometer	202	Semi Confined to Confined	0.50	101	0.10	Both	Telemetric	Atal Jal
18.	HR_GW_870	Dhani Satnam Singh_32751	Dhani Satnam Singh	Shamshan Ghat, Dhani Satnam Singh	29.4850	74.8276	Piezometer	195	Semi Confined to Confined	0.50	96	0.10	Both	Telemetric	Atal Jal
19.	GWL-06-074-00551-00032751-001	Dhani Satnam Singh_32751	Dhani Satnam Singh	Dhani Satnam Singh To Rania Rd Pr	29.4881	74.8255	Bore Well	195	Semi Confined to Confined	1.30	106	0.25	WL	Manual	Atal Jal-Private

AtalBhujalYojana - Block Hydrogeological Report

S.No	Well ID	Gram Panchayat	Name of the village	Site Name	Latitude	Longitude	Type of Well	Reduced Level	Aquifer Type/Lithology	Height of Measuring (m, agl)	Depth (m,bgl)	Diameter (m)	Purpose of Monitoring (WL/WQ)	Monitoring Mechanism	Agency
20.	HR_GW_853	Dhottar_32753	Dhottar	Govt. Sr. Sec. School, Dhottar	29.5769	74.8933	Piezometer	201	Semi Confined to Confined	0.50	108	0.10	Both	Telemetric	Atal Jal
21.	GWL-06-074-00551-00032753-001	Dhottar_32753	Dhottar	Bijali Ghar Ke Pass	29.5734	74.8937	Tube Well	201	Semi Confined to Confined	0.10	76	0.25	WL	Manual	Atal Jal-Private
22.	HR_GW_854	Fatehpuria_32755	Fatehpuria	Govt. Middle School, Fatehpuria	29.5724	74.8250	Piezometer	198	Semi Confined to Confined	0.50	104	0.10	Both	Telemetric	Atal Jal
23.	HR_GW_871	Ferozabad_32756	Ferozbad	Govt. Middle School Ferozbad	29.4813	74.8525	Piezometer	195	Semi Confined to Confined	0.50	104	0.10	Both	Telemetric	Atal Jal
24.	GWL-06-074-00551-00032756-001	Ferozabad_32756	Ferozabad	Ferozabad Gsss School K Pass	29.4831	74.8592	Bore Well	197	Semi Confined to Confined	0.10	76	0.25	WL	Manual	Atal Jal-Private
25.	HR_GW_872	Ghoranwali_32757	Ghoranwali	Govt. Middle School, Ghoranwali	29.6377	74.7860	Piezometer	199	Semi Confined to Confined	0.50	70	0.10	Both	Telemetric	Atal Jal
26.	HR_GW_856	Gidranwali_32759	Gindaranwali	Govt. Primary School Gindaranwali	29.4660	74.8681	Piezometer	199	Semi Confined to Confined	0.50	85	0.10	Both	Telemetric	Atal Jal
27.	GWL-06-074-00551-00032759-001	Gidranwali_32759	Gidranwali	Gidranwali To Kotli Road Rd	29.4625	74.8451	Tube Well	195	Semi Confined to Confined	0.30	70	0.10	WL	Manual	Atal Jal-Private
28.	HR_GW_855	Gindran_32758	Gindran	Govt. High School, Gindran	29.6171	74.7609	Piezometer	195	Semi Confined to Confined	0.50	94	0.10	Both	Telemetric	Atal Jal
29.	GWL-06-074-00551-00032760-001	Govindpura_32760	Abholi	Near Water Tank	29.4957	74.8800	Bore Well	198	Semi Confined to Confined	0.10	76	0.25	WL	Manual	Atal Jal-Private
30.	SIR_RAN_ABHOLI_1	Govindpura_32760	Govindpura	Charan Singh	29.5099	74.8700	Tube Well	195	Unconfined Aquifer/ sand, Clay, Kankar	0.10	107	0.25	WQ	Manual	Atal Jal
31.	HR_GW_873	Himmatpura_298066	Himmatpura	Govt. Primary School, Himmatpura	29.5040	74.7257	Piezometer	195	Semi Confined to Confined	0.50	103	0.10	Both	Telemetric	Atal Jal
32.	HR_GW_857	Jagjeet Nagar_265152	Jagjeet Nagar	Govt. Primary School, Jagjeet Their	29.5656	74.7009	Piezometer	194	Semi Confined to Confined	0.50	91	0.10	Both	Telemetric	Atal Jal
33.	HR_GW_874	Jodhpuria_32762	Jodhpuriya	Govt. Sr. Sec. School, Jodhpuria	29.6220	74.9071	Piezometer	200	Semi Confined to Confined	0.50	42	0.10	Both	Telemetric	Atal Jal
34.	HR_GW_858	Keharwala_32763	Keharwala	Govt. Sr. Sec. School, Keharwala	29.6640	74.7099	Piezometer	196	Semi Confined to Confined	0.50	61	0.10	Both	Telemetric	Atal Jal
35.	HR_GW_875	Khaja Khera_32764	Khaja Khera	Govt. Primary School Khaja Khera	29.6049	74.7613	Piezometer	199	Semi Confined to Confined	0.50	93	0.10	Both	Telemetric	Atal Jal
36.	GWL-06-074-00551-00032764-001	Khaja Khera_32764	Khaja Khera	Gram Sachivalay	29.6045	74.7603	Bore Well	197	Semi Confined to Confined	0.50	80	0.10	WL	Manual	Atal Jal-Private
37.	HR_GW_859	Kharian_32765	Kharia	Govt. Senior Secandry School Kharia	29.6237	74.8578	Piezometer	200	Semi Confined to Confined	0.50	54	0.10	Both	Telemetric	Atal Jal
38.	GWL-06-074-00551-00032766-001	Kotha Sainpal_32766	Kotha Sainpal	Pond Ke Paas	29.6315	74.6535	Bore Well	193	Semi Confined to Confined	0.70	100	0.30	WL	Manual	Atal Jal-Private
39.	SIR_RAN_KOTHA_1	Kotha Sainpal_32766	Kotha Sainpal	Jagsir Singh	29.6312	74.6500	Tube Well	192	Unconfined Aquifer/ sand, Clay, Kankar	0.51	137	0.26	WQ	Manual	Atal Jal
40.	HR_GW_876	Kussar_32767	Kussar	Govt. Sr. Sec. School, Kussar	29.6071	74.7844	Piezometer	197	Semi Confined to Confined	0.50	93	0.10	Both	Telemetric	Atal Jal

AtalBhujalYojana - Block Hydrogeological Report

S.No	Well ID	Gram Panchayat	Name of the village	Site Name	Latitude	Longitude	Type of Well	Reduced Level	Aquifer Type/Lithology	Height of Measuring (m, agl)	Depth (m,bgl)	Diameter (m)	Purpose of Monitoring (WL/WQ)	Monitoring Mechanism	Agency
41.	SIR_RAN_MAMMER_1	Mamerkhera_32768	Mammer Khera	Ram Singh	29.6748	74.6779	Tube Well	196	Unconfined Aquifer/ sand, Clay, Kankar	0.65	23	0.25	WQ	Manual	Atal Jal
42.	GWL-06-074-00551-00032769-001	Mangalia_32769	Mangalia	Government School	29.5790	74.8487	Bore Well	199	Semi Confined to Confined	0.00	100	0.25	WL	Manual	Atal Jal-Private
43.	SIR_RAN_MANGALIA_1	Mangalia_32769	Mangalia	Harprit Singh	29.5791	74.8589	Tube Well	200	Unconfined Aquifer/ sand, Clay, Kankar	0.00	91	0.25	WQ	Manual	Atal Jal
44.	HR_GW_877	Mattuwalla_32770	Mattuwalla	Govt. Middle School, Mattuwalla	29.6324	74.6936	Piezometer	193	Semi Confined to Confined	0.50	95	0.10	Both	Telemetric	Atal Jal
45.	GWL-06-074-00551-00032770-002	Mattuwalla_32770	Mattuwalla	Mattuwalla To Mammed Road	29.6381	74.6867	Tube Well	193	Semi Confined to Confined	0.50	76	0.25	WL	Manual	Atal Jal-Private
46.	SIR_RAN_MEHNA_1	Mehna Khera_32771	Mehna Khera	Gram Panchayat	29.6126	74.8125	Tube Well	195	Unconfined Aquifer/ sand, Clay, Kankar	0.60	122	0.10	WQ	Manual	Atal Jal
47.	HR_GW_879	Mohmadpuria_32773	Mohamadpuria	Govt. Primary School, Mohamadpuria	29.5655	74.8132	Piezometer	198	Semi Confined to Confined	0.50	78	0.10	Both	Telemetric	Atal Jal
48.	GWL-06-074-00551-00032773-001	Mohmadpuria_32773	Mohammadpuria	Mohammadpuria To Kuasar Rd	29.5681	74.8140	Tube Well	197	Semi Confined to Confined	0.35	82	0.25	WL	Manual	Atal Jal-Private
49.	HR_GW_862	Moranwali_32782 (Peerkhera)	Peerkhera	Govt. Middle School, Moranwali	29.6390	74.9086	Piezometer	200	Semi Confined to Confined	0.50	56	0.10	Both	Telemetric	Atal Jal
50.	SIR_RAN_MOUJDEEN_1	Moujdeen_32774	Moujdeen	Jagdish	29.4680	74.8902	Tube Well	205	Unconfined Aquifer/ sand, Clay, Kankar	0.18	61	0.25	WQ	Manual	Atal Jal
51.	SIR_RAN_NAGRANA_1	Nagrana / Rania_32775	Nagrana (Rania)	Sonu	29.5001	74.7884	Tube Well	193	Unconfined Aquifer/ sand, Clay, Kankar	0.20	107	0.25	WQ	Manual	Atal Jal
52.	HR_GW_881	Naiwala_32776	Naiwala	Govt. Middle School, ,Naiwala	29.5877	74.7574	Piezometer	198	Semi Confined to Confined	0.50	101	0.10	Both	Telemetric	Atal Jal
53.	GWL-06-074-00551-00032776-001	Naiwala_32776	Naiwala	Naiwala Johad Pr	29.5905	74.7577	Bore Well	198	Semi Confined to Confined	0.10	91	0.25	WL	Manual	Atal Jal-Private
54.	HR_GW_882	Nanuana_32778	Nanuana	Govt. Middle School, Nanuana	29.5542	74.8558	Piezometer	201	Semi Confined to Confined	0.50	94	0.10	Both	Telemetric	Atal Jal
55.	HR_GW_883	Nathor_32779	Nathor	Govt. High School, Nathor	29.6276	74.6324	Piezometer	190	Semi Confined to Confined	0.50	86	0.10	Both	Telemetric	Atal Jal
56.	SIR_RAN_DHUDHIAN_1	Pattirathawas_32781	Pattirathawas	Parhlad	29.6007	74.7184	Tube Well	193	Unconfined Aquifer/ sand, Clay, Kankar	0.00	70	0.25	WQ	Manual	Atal Jal
57.	HR_GW_884	Rampur Their_32783	Rampur Their	Govt. Primary School, Rampur Their	29.5235	74.7951	Piezometer	201	Semi Confined to Confined	0.50	92	0.10	Both	Telemetric	Atal Jal
58.	GWL-06-074-00551-00032783-001	Rampur Their_32783	Rampurtheri	Rampurtheri To Ranjeetpur Theri Rd Pr	29.5246	74.7927	Tube Well	196	Semi Confined to Confined	0.20	106	0.25	WL	Manual	Atal Jal-Private
59.	GWL-06-074-00551-00032775-001	Rania_32775 (Nagrana)	Nagrana	Nagrana Gaam Me	29.4948	74.7838	Bore Well	194	Semi Confined to Confined	0.00	55	0.25	WL	Manual	Atal Jal-Private
60.	HR_GW_885	Sadewala_32785	Sadewala	Gram Sachiwalya, Sadewala	29.6453	74.7209	Piezometer	193	Semi Confined to Confined	0.50	86	0.10	Both	Telemetric	Atal Jal

AtalBhujalYojana - Block Hydrogeological Report

S.No	Well ID	Gram Panchayat	Name of the village	Site Name	Latitude	Longitude	Type of Well	Reduced Level	Aquifer Type/Lithology	Height of Measuring (m, agl)	Depth (m,bgl)	Diameter (m)	Purpose of Monitoring (WL/WQ)	Monitoring Mechanism	Agency
61.	GWL-06-074-00551-00032785-001	Sadewala_32785	Sadewala	Gindran Rood	29.6356	74.7365	Bore Well	195	Semi Confined to Confined	1.35	90	0.25	WL	Manual	Atal Jal-Private
62.	GWL-06-074-00551-00032787-001	Santawali_32787	Santawali	Santawali Nahar K Pass	29.5233	74.7569	Tube Well	196	Semi Confined to Confined	0.00	100	0.25	WL	Manual	Atal Jal-Private
63.	SIR_RAN_SANTA_1	Santawali_32787	Santawali	Lakhwinder Singh	29.5231	74.7521	Tube Well	195	Unconfined Aquifer/ sand, Clay, Kankar	0.05	137	0.25	WQ	Manual	Atal Jal
64.	HR_GW_864	Sultanpuria_32788	Sultanpuria	Stadium Play Ground, Sultanpuria	29.5414	74.8750	Piezometer	199	Semi Confined to Confined	0.50	104	0.10	Both	Telemetric	Atal Jal
65.	GWL-06-074-00551-00032788-001	Sultanpuria_32788	Sultapuria	Rania Road	29.5328	74.8658	Bore Well	198	Semi Confined to Confined	0.10	100	0.25	WL	Manual	Atal Jal-Private
66.	SIR_RAN_THERSH_1	Ther Shahidan_32789	Ther Shahidanwali	Paramjit	29.5824	74.5806	Tube Well	191	Unconfined Aquifer/ sand, Clay, Kankar	0.46	134	0.17	WQ	Manual	Atal Jal
67.	W293658074532501	Darewala_32747	Dariyawala-S	Dariyawala-S-Pz	29.6162	74.8906	Piezometer	203	Unconfined to Semi Confined	0.60	77	0.10	WL	Manual	CGWB
68.	W294020074392501	Mamerkhera_32768	Mammer Khera	Mammer Khera-Pz	29.6722	74.6569	Piezometer	193	Unconfined to Semi Confined	0.60	105	0.11	Both	Manual	CGWB
69.	W294730074423001	Goriwala	Goriwala	Goriwala	29.7917	74.7083	Tube Well	195	Alluvium	0.35	NA	0.15	WQ	Manual	CGWB
70.	Ba_29.5927_74.6809	Bahia_32739	Bahia	Bani To Bahia Road	29.5927	74.6809	Tube Well	195.5	Unconfined to Semi Confined	0.70	100	0.25	WL	Manual	SGWD
71.	Ba_29.5564_74.7779	Balasar_32740	Balasar	Outside Balasar Link Road	29.5564	74.7779	Tube Well	196.5	Unconfined to Semi Confined	0.70	80	0.25	WL	Manual	SGWD
72.	Bh_29.5387_74.7671	Bharolanwali_32742	Bharolain Wali	Bharolain Wali Public Health Tube Well	29.5387	74.7671	Tube Well	196.75	Unconfined to Semi Confined	0.70	110	0.25	WL	Manual	SGWD
73.	Ch_29.6626_74.7896	Chakan_32744	Chakkan	Chakkan Public Health Tube-Well	29.6626	74.7896	Tube Well	195.5	Unconfined to Semi Confined	0.70	70	0.25	WL	Manual	SGWD
74.	Ot_29.4927_74.8911	Dhamora Theri_32748	Ottu	Public Health Tube Well Ottu	29.4927	74.8911	Tube Well	197.73	Unconfined to Semi Confined	0.70	120	0.25	WL	Manual	SGWD
75.	Dh_29.5258_74.9163	Dhani Bangi_32749	Dhanoor	Dhanoor Public Health Tube-Well	29.5258	74.9163	Tube Well	202.25	Unconfined to Semi Confined	0.70	80	0.25	WL	Manual	SGWD
76.	Fa_29.5725_74.8256	Fatehpuria_32755	Fatehpuria	Tube Well On Road Fatehpuria To Mehna Khera	29.5725	74.8256	Tube Well	200	Unconfined to Semi Confined	0.70	80	0.25	WL	Manual	SGWD
77.	Gh_29.644_74.7889	Ghoranwali_32757	Ghoranwali	Ghoranwali Public Health Tube-Well	29.6440	74.7889	Tube Well	197.25	Unconfined to Semi Confined	0.70	70	0.25	WL	Manual	SGWD
78.	Gi_29.6198_74.7609	Gindran_32758	Gindra	Tube-Well Gindra To Ghoranwali Road	29.6198	74.7609	Dug Well	197.34	Unconfined to Semi Confined	1.25	25	2.00	WL	Manual	SGWD
79.	Na_29.5112_74.752	Himmatpura_298066	Nakaura	Tubewell Santawali Nakaura Road	29.5112	74.7520	Tube Well	199.25	Unconfined to Semi Confined	0.70	110	0.25	WL	Manual	SGWD
80.	Ja_29.5608_74.6964	Jagjeet Nagar_265152	Jagjeet Nagar	On Road Tube Well Jiwan Nagar To Kariwala	29.5608	74.6964	Tube Well	194	Unconfined to Semi Confined	0.34	60	0.20	WL	Manual	SGWD
81.	Jo_29.6214_74.9065	Jodhpuria_32762	Jodhpuria	Jodhpuria Public Health Tube Well	29.6214	74.9065	Dug Well	198.43	Unconfined to Semi Confined	1.25	26	2.00	WL	Manual	SGWD

S.No	Well ID	Gram Panchayat	Name of the village	Site Name	Latitude	Longitude	Type of Well	Reduced Level	Aquifer Type/Lithology	Height of Measuring (m, agl)	Depth (m,bgl)	Diameter (m)	Purpose of Monitoring (WL/WQ)	Monitoring Mechanism	Agency
82.	Ke_29.6545_74.7124	Keharwala_32763	Keharwala	Tube Well On Main Road To Keharwala	29.6580	74.7123	Tube Well	199.75	Unconfined to Semi Confined	0.70	80	0.25	WL	Manual	SGWD
83.	Kh_29.6218_74.8586	Kharian_32765	Kharian	Tubewell On Nehar Kharian	29.6218	74.8586	Dug Well	197.86	Unconfined to Semi Confined	1.25	24	2.00	WL	Manual	SGWD
84.	Ku_29.6074_74.7848	Kussar_32767	Kusar	Tube Well Gindra Kusar Road	29.6074	74.7848	Tube Well	196	Unconfined to Semi Confined	0.70	100	0.25	WL	Manual	SGWD
85.	Pe_29.6374_74.9066	Moranwali_32782 (Peerkhera)	Peer Khera	Tube Well Jodhpuria Peer Khera Road	29.6374	74.9066	Dug Well	195.11	Unconfined to Semi Confined	1.25	20	2.00	WL	Manual	SGWD
86.	Mo_29.4657_74.8857	Moujdeen_32774	Moujdeen	Tubewell Otu Moujdeen Road	29.4657	74.8857	Tube Well	198.25	Unconfined to Semi Confined	0.70	80	0.25	WL	Manual	SGWD
87.	Na_29.5609_74.848	Nanuana_32778	Nanuana	Tubewell Outside Village On Link Road Nanuana	29.5609	74.8480	Tube Well	197.75	Unconfined to Semi Confined	0.70	100	0.25	WL	Manual	SGWD
88.	Na_29.6308_74.635	Nathor_32779	Nathor	Tubewell Outside Village Nathor-Bacher Road	29.6308	74.6350	Tube Well	198.35	Unconfined to Semi Confined	0.70	80	0.25	WL	Manual	SGWD
89.	Du_29.6138_74.7169	Pattirathawas_32781	Dudhianwali	Pt Govt High School Dudhianwali	29.6138	74.7169	Tube Well	193	Unconfined to Semi Confined	0.70	75	0.25	WL	Manual	SGWD
90.	Ba_29.599_74.6185	Ther Shahidan_32789	Bani	Pt Ggps Bani Girls School	29.5990	74.6185	Tube Well	189.5	Unconfined to Semi Confined	0.70	96	0.25	WL	Manual	SGWD
91.	Ra_29.5281_74.8381	Rania	Rania	Pt Gsss Rania	29.5281	74.8381	Tube Well	196.22	Unconfined to Semi Confined	0.70	100	0.25	WL	Manual	SGWD

ANNEXURE: 2
WATER LEVEL (WL) DATA OF MONITORING WELLS

State	Haryana	District	Sirsa	Block	Rania
Month of Pre-monsoon Water Level Measurement					May/June
Month of Post-monsoon water Level measurement					October/November

S.No.	Observation Point	Source	Well Type	Co-ordinate		Water Level (m)																			
				Latitude	Longitude	2015		2016		2017		2018		2019		2020		2021		2022		2023		2024	
						Pre	Post	Pre	Post	Pre	Post	Pre	Post	Pre	Post	Pre	Post	Pre	Post	Pre	Post	Pre	Post	Pre	Post
1	Abutgarh_32737	Atal Jal	Piezometer	29.5098	74.9068	NA	NA	NA	NA	NA	NA	NA	NA	NA	NA	NA	NA	NA	NA	NA	NA	NA	50	52.8	
2	Abutgarh_32737	Atal Jal	Tube Well	29.5069	74.9055	NA	NA	NA	NA	NA	NA	NA	NA	NA	NA	NA	NA	NA	NA	NA	NA	48	49.1	49	49.7
3	Bacher_32738	Atal Jal	Piezometer	29.6494	74.5975	NA	NA	NA	NA	NA	NA	NA	NA	NA	NA	NA	NA	NA	NA	NA	NA	NA	25	26	
4	Bacher_32738	Atal Jal	Bore Well	29.6521	74.5975	NA	NA	NA	NA	NA	NA	NA	NA	NA	NA	NA	NA	NA	NA	NA	NA	22	20.4	22	22.9
5	Bahia_32739	Atal Jal	Piezometer	29.5918	74.6808	NA	NA	NA	NA	NA	NA	NA	NA	NA	NA	NA	NA	NA	NA	NA	NA	NA	55	58.2	
6	Bharolanwali_32742	Atal Jal	Piezometer	29.5397	74.7705	NA	NA	NA	NA	NA	NA	NA	NA	NA	NA	NA	NA	NA	NA	NA	NA	NA	49	53.3	
7	Bhuna_32743	Atal Jal	Piezometer	29.6567	74.8086	NA	NA	NA	NA	NA	NA	NA	NA	NA	NA	NA	NA	NA	NA	NA	NA	NA	14	14.7	
8	Bhuna_32743	Atal Jal	Tube Well	29.6497	74.8128	NA	NA	NA	NA	NA	NA	NA	NA	NA	NA	NA	NA	NA	NA	NA	NA	16	16.3	16	15.5
9	Chak Sahiban_32746	Atal Jal	Bore Well	29.4797	74.9063	NA	NA	NA	NA	NA	NA	NA	NA	NA	NA	NA	NA	NA	NA	NA	NA	52	51.6	50	50.7
10	Chakan_32744	Atal Jal	Piezometer	29.6628	74.7895	NA	NA	NA	NA	NA	NA	NA	NA	NA	NA	NA	NA	NA	NA	NA	NA	NA	18	18.3	
11	Chakrayian_32745	Atal Jal	Piezometer	29.4926	74.9114	NA	NA	NA	NA	NA	NA	NA	NA	NA	NA	NA	NA	NA	NA	NA	NA	NA	51	56.2	
12	Chakrayian_32745	Atal Jal	Tube Well	29.4909	74.9086	NA	NA	NA	NA	NA	NA	NA	NA	NA	NA	NA	NA	NA	NA	NA	NA	48	49.1	48	49
13	Dhamora Theri_32748	Atal Jal	Piezometer	29.4932	74.8631	NA	NA	NA	NA	NA	NA	NA	NA	NA	NA	NA	NA	NA	NA	NA	NA	NA	54	52.5	
14	Dhani Bangi_32749	Atal Jal	Piezometer	29.5245	74.9170	NA	NA	NA	NA	NA	NA	NA	NA	NA	NA	NA	NA	NA	NA	NA	NA	NA	51	51.2	
15	Dhani Satnam Singh_32751	Atal Jal	Piezometer	29.4850	74.8276	NA	NA	NA	NA	NA	NA	NA	NA	NA	NA	NA	NA	NA	NA	NA	NA	NA	48	50	
16	Dhani Satnam Singh_32751	Atal Jal	Bore Well	29.4881	74.8255	NA	NA	NA	NA	NA	NA	NA	NA	NA	NA	NA	NA	NA	NA	NA	NA	49	50.7	48	48.8
17	Dhottar_32753	Atal Jal	Piezometer	29.5769	74.8933	NA	NA	NA	NA	NA	NA	NA	NA	NA	NA	NA	NA	NA	NA	NA	NA	NA	35	27.2	
18	Dhottar_32753	Atal Jal	Tube Well	29.5734	74.8937	NA	NA	NA	NA	NA	NA	NA	NA	NA	NA	NA	NA	NA	NA	NA	NA	30	30.3	29	29.9
19	Fatehpuria_32755	Atal Jal	Piezometer	29.5724	74.8250	NA	NA	NA	NA	NA	NA	NA	NA	NA	NA	NA	NA	NA	NA	NA	NA	NA	36	38.3	
20	Ferozabad_32756	Atal Jal	Piezometer	29.4813	74.8525	NA	NA	NA	NA	NA	NA	NA	NA	NA	NA	NA	NA	NA	NA	NA	NA	NA	47	48.3	
21	Ferozabad_32756	Atal Jal	Bore Well	29.4831	74.8592	NA	NA	NA	NA	NA	NA	NA	NA	NA	NA	NA	NA	NA	NA	NA	NA	46	46.5	46	46.6
22	Ghoranwali_32757	Atal Jal	Piezometer	29.6377	74.7860	NA	NA	NA	NA	NA	NA	NA	NA	NA	NA	NA	NA	NA	NA	NA	NA	NA	23	23.4	
23	Gidranwali_32759	Atal Jal	Piezometer	29.4660	74.8681	NA	NA	NA	NA	NA	NA	NA	NA	NA	NA	NA	NA	NA	NA	NA	NA	NA	45	43.6	
24	Gidranwali_32759	Atal Jal	Tube Well	29.4625	74.8451	NA	NA	NA	NA	NA	NA	NA	NA	NA	NA	NA	NA	NA	NA	NA	NA	41	41.5	38	38.4
25	Gindran_32758	Atal Jal	Piezometer	29.6171	74.7609	NA	NA	NA	NA	NA	NA	NA	NA	NA	NA	NA	NA	NA	NA	NA	NA	NA	41	41.1	
26	Govindpura_32760	Atal Jal	Bore Well	29.4957	74.8800	NA	NA	NA	NA	NA	NA	NA	NA	NA	NA	NA	NA	NA	NA	NA	NA	54	55.1	54	54.7
27	Himmatpura_298066	Atal Jal	Piezometer	29.5040	74.7257	NA	NA	NA	NA	NA	NA	NA	NA	NA	NA	NA	NA	NA	NA	NA	NA	NA	46	51.8	
28	Jagjeet Nagar_265152	Atal Jal	Piezometer	29.5656	74.7009	NA	NA	NA	NA	NA	NA	NA	NA	NA	NA	NA	NA	NA	NA	NA	NA	NA	52	54.6	
29	Jodhpuria_32762	Atal Jal	Piezometer	29.6220	74.9071	NA	NA	NA	NA	NA	NA	NA	NA	NA	NA	NA	NA	NA	NA	NA	NA	NA	11	10.9	
30	Keharwala_32763	Atal Jal	Piezometer	29.6640	74.7099	NA	NA	NA	NA	NA	NA	NA	NA	NA	NA	NA	NA	NA	NA	NA	NA	NA	23	23.3	
31	Khaja Khera_32764	Atal Jal	Piezometer	29.6049	74.7613	NA	NA	NA	NA	NA	NA	NA	NA	NA	NA	NA	NA	NA	NA	NA	NA	NA	48	50.3	
32	Khaja Khera_32764	Atal Jal	Bore Well	29.6045	74.7603	NA	NA	NA	NA	NA	NA	NA	NA	NA	NA	NA	NA	NA	NA	NA	NA	48	48.3	48	50.1
33	Kharian_32765	Atal Jal	Piezometer	29.6237	74.8578	NA	NA	NA	NA	NA	NA	NA	NA	NA	NA	NA	NA	NA	NA	NA	NA	NA	11	11	
34	Kotha Sainpal_32766	Atal Jal	Bore Well	29.6315	74.6535	NA	NA	NA	NA	NA	NA	NA	NA	NA	NA	NA	NA	NA	NA	NA	NA	38	39.3	40	41.6
35	Kussar_32767	Atal Jal	Piezometer	29.6071	74.7844	NA	NA	NA	NA	NA	NA	NA	NA	NA	NA	NA	NA	NA	NA	NA	NA	NA	38	39	
36	Mangalia_32769	Atal Jal	Bore Well	29.5790	74.8487	NA	NA	NA	NA	NA	NA	NA	NA	NA	NA	NA	NA	NA	NA	NA	NA	31	31.5	30	32.6
37	Mattuwalla_32770	Atal Jal	Piezometer	29.6324	74.6936	NA	NA	NA	NA	NA	NA	NA	NA	NA	NA	NA	NA	NA	NA	NA	NA	NA	35	35	
38	Mattuwalla_32770	Atal Jal	Tube Well	29.6381	74.6867	NA	NA	NA	NA	NA	NA	NA	NA	NA	NA	NA	NA	NA	NA	NA	NA	30	30.3	39	38.4
39	Mehna Khera_32771	Atal Jal	Piezometer	29.6083	74.8191	NA	NA	NA	NA	NA	NA	NA	NA	NA	NA	NA	NA	NA	NA	NA	NA	31	31.3	31	31.4
40	Mohmadpuria_32773	Atal Jal	Piezometer	29.5655	74.8132	NA	NA	NA	NA	NA	NA	NA	NA	NA	NA	NA	NA	NA	NA	NA	NA	NA	37	37.3	
41	Mohmadpuria_32773	Atal Jal	Tube Well	29.5681	74.8140	NA	NA	NA	NA	NA	NA	NA	NA	NA	NA	NA	NA	NA	NA	NA	NA	42	43.1	38	38.6

S.No.	Observation Point	Source	Well Type	Co-ordinate		Water Level (m)																			
				Latitude	Longitude	2015		2016		2017		2018		2019		2020		2021		2022		2023		2024	
						Pre	Post	Pre	Post	Pre	Post	Pre	Post	Pre	Post	Pre	Post	Pre	Post	Pre	Post	Pre	Post	Pre	Post
42	Moranwali_32782 (Peerkhhera)	Atal Jal	Piezometer	29.6390	74.9086	NA	NA	NA	NA	NA	NA	NA	NA	NA	NA	NA	NA	NA	NA	NA	NA	NA	8.3	7.94	
43	Naiwala_32776	Atal Jal	Piezometer	29.5877	74.7574	NA	NA	NA	NA	NA	NA	NA	NA	NA	NA	NA	NA	NA	NA	NA	NA	NA	49	51.1	
44	Naiwala_32776	Atal Jal	Bore Well	29.5905	74.7577	NA	NA	NA	NA	NA	NA	NA	NA	NA	NA	NA	NA	NA	NA	NA	NA	46	47.1	47	47.2
45	Nanuana_32778	Atal Jal	Piezometer	29.5542	74.8558	NA	NA	NA	NA	NA	NA	NA	NA	NA	NA	NA	NA	NA	NA	NA	NA	NA	36	37.5	
46	Nathor_32779	Atal Jal	Piezometer	29.6276	74.6324	NA	NA	NA	NA	NA	NA	NA	NA	NA	NA	NA	NA	NA	NA	NA	NA	NA	44	46.1	
47	Rampur Their_32783	Atal Jal	Piezometer	29.5235	74.7951	NA	NA	NA	NA	NA	NA	NA	NA	NA	NA	NA	NA	NA	NA	NA	NA	NA	57	57.3	
48	Rampur Their_32783	Atal Jal	Tube Well	29.5246	74.7927	NA	NA	NA	NA	NA	NA	NA	NA	NA	NA	NA	NA	NA	NA	NA	NA	51	51.9	48	54.2
49	Rania_32775 (Nagrana)	Atal Jal	Bore Well	29.4948	74.7838	NA	NA	NA	NA	NA	NA	NA	NA	NA	NA	NA	NA	NA	NA	NA	NA	46	47.6	46	49.5
50	Sadewala_32785	Atal Jal	Piezometer	29.6453	74.7209	NA	NA	NA	NA	NA	NA	NA	NA	NA	NA	NA	NA	NA	NA	NA	NA	NA	23	28.9	
51	Sadewala_32785	Atal Jal	Bore Well	29.6356	74.7365	NA	NA	NA	NA	NA	NA	NA	NA	NA	NA	NA	NA	NA	NA	NA	NA	21	21.5	22	22.9
52	Santawali_32787	Atal Jal	Tube Well	29.5233	74.7569	NA	NA	NA	NA	NA	NA	NA	NA	NA	NA	NA	NA	NA	NA	NA	NA	53	55.4	55	55.7
53	Sultanpuria_32788	Atal Jal	Piezometer	29.5414	74.8750	NA	NA	NA	NA	NA	NA	NA	NA	NA	NA	NA	NA	NA	NA	NA	NA	NA	38	42.3	
54	Sultanpuria_32788	Atal Jal	Bore Well	29.5328	74.8658	NA	NA	NA	NA	NA	NA	NA	NA	NA	NA	NA	NA	NA	NA	NA	NA	43	46.4	44	44.7
55	Darewala_32747	CGWB	Piezometer	29.6162	74.8906	NA	NA	NA	NA	NA	NA	NA	NA	NA	NA	NA	NA	NA	NA	NA	NA	33	15.2	14	NA
56	Mamerkhhera_32768	CGWB	Piezometer	29.6722	74.6569	19.4	19.3	19.5	19.7	19.9	19.9	20.1	19.9	20.3	19.7	20.2	20.4	21	20.7	20.5	21.6	22	21.7	22	21.75
57	Bahia_32739	SGWD	Tube Well	29.5927	74.6809	38.1	39.6	40.2	38.9	38.9	38.9	39.3	39.3	42.7	43.1	43	44	45	45.2	45	44.9	44	44.8	45	49.8
58	Balasar_32740	SGWD	Tube Well	29.5564	74.7779	30.5	33.5	33.5	34.8	34.8	34.9	34.9	34.5	32	32.7	33	33.2	34	33.8	33	33.5	33	34	32	44.3
59	Bharolanwali_32742	SGWD	Tube Well	29.5387	74.7671	39.6	39.6	39.6	41.4	42.8	42.6	42.6	43.5	44.2	45.1	45.1	45.2	45	45.4	44.6	45	44	45	43	46.8
60	Chakan_32744	SGWD	Tube Well	29.6626	74.7896	16.5	16.7	17	16.6	16.7	17.4	18.8	18.9	23.5	22.8	23.9	23.9	24	24.2	24.5	25	25	25.1	18	19.9
61	Dhamora Theri_32748	SGWD	Tube Well	29.4927	74.8911	31.1	32.6	33.5	32.6	31.7	31.7	32.9	33	40.3	41	40.5	40.6	41	41.4	41.2	42	41	42	42	47.1
62	Dhani Bangi_32749	SGWD	Tube Well	29.5258	74.9163	33.5	33.5	33.5	34.8	34.8	34.8	35	35	39.6	42	39.7	39.7	40	40	39	39.5	39	39.3	38	40.7
63	Fatehpuria_32755	SGWD	Tube Well	29.5725	74.8256	35.1	NA	38.1	38.4	38.4	38.7	38.7	38.7	39	39.9	39	39.1	39	39.6	38.5	38.6	38	38.4	34	37.3
64	Ghoranwali_32757	SGWD	Tube Well	29.6440	74.7889	15.3	15.2	15.3	16.7	16.7	16.7	17	17	25.1	26	25.6	25.7	26	25.8	26	26.2	26	26	26	23.4
65	Gindran_32758	SGWD	Dug Well	29.6198	74.7609	15	14.4	14	15	14.4	14.4	16	16	15.4	15.9	NA	NA	16	15.8	16	17	16	17	16	22.5
66	Himmatpura_298066	SGWD	Tube Well	29.5112	74.7520	40.2	41.2	41.2	41.1	42.1	42.1	43.1	43.5	46.6	47.7	46.6	46.7	47	46.9	46.5	47	46	47.2	44	49.2
67	Jagjeet Nagar_265152	SGWD	Tube Well	29.5608	74.6964	39.6	44.2	44.2	46.9	46.9	48.1	47.1	46.9	50.1	51.3	50.3	51.2	NA	NA	49.5	50	49	50	50	51.8
68	Jodhpuria_32762	SGWD	Dug Well	29.6214	74.9065	11.3	11.5	11.9	12.1	12.3	12.4	12.5	15.4	16.8	17.6	18	18.5	18	18.2	18.1	18.4	18	18.1	11	11.2
69	Keharwala_32763	SGWD	Tube Well	29.6580	74.7123	18.3	18.3	18.3	19.8	19.8	19.8	20	20	25.2	26.1	25.3	25.4	25	25.7	24.5	24.3	24	24.2	22	22.4
70	Kharian_32765	SGWD	Dug Well	29.6218	74.8586	11.9	12.1	12.4	12.5	13.1	13.1	13.2	15	19.8	20.6	19.8	19.9	20	19.8	20	19	19	19	9.5	11
71	Kussar_32767	SGWD	Tube Well	29.6074	74.7848	38.1	39.6	39.6	38.9	38.9	38.9	39	39	42.7	43.8	42.7	42.7	43	42.4	42.5	42.9	42	42.1	30	38.1
72	Moranwali_32782 (Peerkhhera)	SGWD	Dug Well	29.6374	74.9066	17.3	17.3	18.2	19.8	18.2	18.2	19	19	12.2	12.9	12.2	12.2	13	12.6	12.5	12.1	11	12	8.1	8.45
73	Moujdeen_32774	SGWD	Tube Well	29.4657	74.8857	36.6	36.6	36.6	35.7	35.7	35.7	36.5	36.8	41.1	42.2	42.2	42.3	42	42.4	42	41.9	41	41.9	41	44.7
74	Nanuana_32778	SGWD	Tube Well	29.5609	74.8480	32	33.5	33.5	34.4	34.4	34.4	35.4	35.4	36.6	37.7	36.7	36.8	37	36.9	36.4	36.6	36	36.6	36	35.5
75	Nathor_32779	SGWD	Tube Well	29.6308	74.6350	32	33.5	33.5	34.4	34.4	34.4	35.6	35.9	38.7	39.4	38.7	38.9	39	38.7	38.5	39	38	45.1	39	34.2
76	Pattirathawas_32781	SGWD	Tube Well	29.6138	74.7169	15.2	15.2	15.2	16.5	16.5	16.3	33	34	34.1	35	35.8	35.9	37	37	38	38.2	39	38.3	39	33.7
77	Ther Shahidan_32789	SGWD	Tube Well	29.5990	74.6185	27	29.1	28.8	30.7	31.2	31.3	31.3	34	35.3	36.6	36	36	36	36	36.9	37.1	38	39	40	42
78	Rania	SGWD	Tube Well	29.5281	74.8381	42.5	45.4	45.3	46.2	47.8	48.3	49	51.7	51.4	52	NA	NA	52	51.6	54.2	52.8	54	52.8	54	47.2

ANNEXURE: 3
HISTORICAL WATER QUALITY (WQ) DATA OF MONITORING WELLS BY SGWB

State	Haryana				District	Sirsa					Block	Rania								
Month of Collection of sample for WQ monitoring*												June								
Gram Panchayat	Source	Type of well	Latitude	Longitude	Year	pH	EC	TDS	TH	Ca	Mg	Na	K	CO ₃	HCO ₃	SO ₄	Cl	F	NO ₃	
Abutgarh_32737	Atal Jal	Pizeometer	29.5098	74.9068	2024	8.18	629	389	169.7	55.23	7.73	51	6	2.276	157.7	76.57	82.24	0.34	20.25	
Bacher_32738	Atal Jal	Pizeometer	29.6494	74.5975	2024	8.09	3214	2009	880.5	280.4	43.8	264	31	9.367	800.7	384	452.3	1.74	93.75	
Bahia_32739	Atal Jal	Pizeometer	29.5918	74.6808	2024	7.91	2795	1797	785	250.7	38.65	236	28	5.501	714.5	357.6	400.9	1.55	84	
Balasar_32740	Atal Jal	Tubewell	29.5575	74.7758	2024	9.03	5022	3064	1262	318.6	113.4	537	29	105.8	953.4	568.3	956.1	1.8	77.5	
Bharolanwali_32742	Atal Jal	Pizeometer	29.5397	74.7705	2024	8.2	1419	830	360.7	114.7	18.04	109	13	4.916	325.1	184	185.1	0.72	40	
Bhuna_32743	Atal Jal	Pizeometer	29.6567	74.8086	2024	7.45	637	356	159.1	50.98	7.73	47	6	0.371	139.6	74.59	82.24	0.31	18.75	
Chak Sahiban_32746	Atal Jal	Tubewell	29.479	74.902	2024	8.47	1565	997	413.7	102	38.64	175	9	9.432	330.7	174.9	308.4	0.91	27	
Chakan_32744	Atal Jal	Pizeometer	29.6628	74.7895	2024	7.44	13898	7957	3480	1109	172.6	1045	124	8.311	3202	1608	1779	6.45	371	
Chakrayian_32745	Atal Jal	Pizeometer	29.4926	74.9114	2024	8.54	666	404	180.3	55.23	10.3	53	6	5.215	154.8	74.99	92.52	0.35	20.75	
Darewala_32747	Atal Jal	Tubewell	29.614	74.8857	2024	8.8	12976	7190	2970	747.7	267.9	1261	67	145.9	2322	1376	2241	5.5	181	
Dhamora Theri_32748	Atal Jal	Pizeometer	29.4932	74.8631	2024	8.23	641	413	180.3	59.48	7.73	54	6	2.714	167.2	72.75	92.52	0.35	21.25	
Dhani Bangi_32749	Atal Jal	Pizeometer	29.5245	74.917	2024	8.25	3472	2231	976	310.1	48.96	293	35	15.04	885.1	431.4	493.5	1.82	103.8	
Dhani Satnam Singh_32751	Atal Jal	Pizeometer	29.485	74.8276	2024	7.76	1083	669	297	93.46	15.46	88	10	1.46	268.5	121.8	154.2	0.58	32.75	
Dhottar_32753	Atal Jal	Pizeometer	29.5769	74.8933	2024	8.19	3437	2028	880.5	284.6	41.23	266	32	11.94	808.2	428.6	452.3	1.75	94.5	
Fatehpuria_32755	Atal Jal	Pizeometer	29.5724	74.825	2024	7.97	2740	1625	710.8	225.2	36.07	213	25	5.79	654.2	349.8	359.8	1.4	76.25	
Ferozabad_32756	Atal Jal	Pizeometer	29.4813	74.8525	2024	7.76	642	397	169.7	55.23	7.73	52	6	0.865	159.1	74.99	92.52	0.34	20.5	
Ghoranwali_32757	Atal Jal	Pizeometer	29.6377	74.786	2024	7.75	7541	4594	2005	641.5	97.91	603	72	9.779	1840	902.4	1028	3.5	219	
Gidranwali_32759	Atal Jal	Pizeometer	29.466	74.8681	2024	8.09	648	417	180.3	59.48	7.73	55	7	1.966	168	73.41	92.52	0.36	21.5	
Gindran_32758	Atal Jal	Pizeometer	29.6171	74.7609	2024	7.79	3418	2147	933.6	301.6	43.8	282	34	5.043	865	415.6	483.2	1.74	100	
Goriwala	CGWB	Tube Well	29.7917	74.7083	2015	8.01	1509	ND	282.0	28.0	51.5	263.0	13.0	0.0	214.0	400.0	179.0	2.07	63.00	
Goriwala	CGWB	Tube Well	29.7917	74.7083	2016	8.45	1870	ND	281.0	37.0	46.0	286.0	15.0	24.0	195.0	410.0	203.0	0.39	48.00	
Goriwala	CGWB	Tube Well	29.7917	74.7083	2017	Sample not collected from this location														
Goriwala	CGWB	Tube Well	29.7917	74.7083	2018	8.67	3360	ND	370.0	40.0	65.0	600.0	15.0	60.0	146.0	756.0	446.0	2.00	73.50	
Goriwala	CGWB	Tube Well	29.7917	74.7083	2019	Sample not collected from this location														
Goriwala	CGWB	Tube Well	29.7917	74.7083	2020	8.55	2984	ND	285.8	24.5	54.6	573.0	12.0	48.0	146.4	84.0	822.4	1.41	89.00	
Goriwala	CGWB	Tube Well	29.7917	74.7083	2021	8.26	850	ND	146.0	20.0	17.0	130.0	4.2	0.0	256.0	0.0	107.0	0.90	90.00	
Goriwala	CGWB	Tube Well	29.7917	74.7083	2022	8.26	350	ND	170.0	36.0	19.5	7.3	3.4	0.0	122.0	57.6	14.2	0.97	2.40	
Goriwala	CGWB	Tube Well	29.7917	74.7083	2023	7.85	5480	ND	860.0	40.0	184.0	810.0	42.0	0.0	500.0	720.0	992.0	1.10	120.00	
Goriwala	CGWB	Tube Well	29.7917	74.7083	2024	7.8	7092	0	910.7	24.05	206.7	1120	29	Nil	451.5	1268	1099	2.2	28	
Govindpura_32760	Atal Jal	Tubewell	29.5099	74.87	2024	5.75	1282	832	339.5	84.97	30.91	146	8	0.015	280	153.8	257	0.76	23	
Himmatpura_298066	Atal Jal	Pizeometer	29.504	74.7257	2024	7.3	1337	820	360.7	114.7	18.04	108	13	0.619	329.4	154.3	185.1	0.71	39.75	
Jageet Nagar_265152	Atal Jal	Pizeometer	29.5656	74.7009	2024	8.41	1749	1019	445.6	140.2	23.19	134	16	9.906	400.2	239.2	226.2	0.88	48.75	
Jodhpuria_32762	Atal Jal	Pizeometer	29.622	74.9071	2024	8.09	6695	4017	1750	560.8	85.03	528	63	18.73	1601	820.8	894.4	3.36	193	
Keharwala_32763	Atal Jal	Pizeometer	29.664	74.7099	2024	7.88	13753	7869	3437	1100	167.5	1034	123	22.6	3148	1713	1758	6.35	367	
Khaja Khera_32764	Atal Jal	Pizeometer	29.6049	74.7613	2024	8.58	3696	2213	965.4	310.1	46.38	291	35	31.81	859.1	473.4	493.5	1.8	102.8	
Kharian_32765	Atal Jal	Pizeometer	29.6237	74.8578	2024	8.25	13148	7659	3342	1071	162.3	1006	120	51.65	3039	1502	1707	6.2	358	
Kotha Sainpal_32766	Atal Jal	Tubewell	29.6312	74.65	2024	8.7	2098	1253	519.8	131.7	46.37	220	12	20.26	410.4	248.6	390.7	1.15	33.25	
Kussar_32767	Atal Jal	Pizeometer	29.6071	74.7844	2024	7.5	3548	2223	976	310.1	48.96	292	35	2.675	897.3	455	493.5	1.8	103.3	
Mamerkhera_32768	Atal Jal	Tubewell	29.6748	74.6779	2024	7.02	4315	2601	1071	271.9	95.33	456	24	0.876	889.1	474.9	812.2	1.4	66.25	
Mangalia_32769	Atal Jal	Tubewell	29.5791	74.8589	2024	6.67	3511	1971	816.9	203.9	74.71	346	18	0.295	669.7	402.5	616.8	0.8	50.75	
Mattuwalla_32770	Atal Jal	Pizeometer	29.6324	74.6936	2024	8.49	3711	2058	901.7	288.9	43.8	270	32	24.11	806.4	481.4	462.6	1.68	95.75	
Mehna Khera_32771	Atal Jal	Tubewell	29.6126	74.8125	2024	6.55	8369	5172	2132	539.5	190.7	907	48	0.59	1769	890.7	1614	3.7	129.3	

Gram Panchayat	Source	Type of well	Latitude	Longitude	Year	pH	EC	TDS	TH	Ca	Mg	Na	K	CO ₃	HCO ₃	SO ₄	Cl	F	NO ₃
Mohmadpuria_32773	Atal Jal	Pizeometer	29.5655	74.8132	2024	6.93	326	181	74.26	25.49	2.58	24	3	0.056	69.94	39.46	41.12	0.15	10.75
Moranwali_32782 (Peerkhera)	Atal Jal	Pizeometer	29.639	74.9086	2024	8.13	11791	7054	3076	985.6	149.5	927	110	36.14	2814	1366	1573	5.65	330
Moujdeen_32774	Atal Jal	Tubewell	29.468	74.8902	2024	8.72	991	598	244	63.72	20.61	105	6	9.866	190.3	118.3	185.1	0.55	17.25
Nagrana / Rania_32775	Atal Jal	Tubewell	29.5001	74.7884	2024	8.87	1095	613	254.6	63.72	23.19	107	6	14.63	196	134.1	195.3	0.56	17.5
Naiwala_32776	Atal Jal	Pizeometer	29.5877	74.7574	2024	7.4	4157	2685	1178	373.9	59.26	353	42	2.55	1077	523.4	596.3	2.2	124.3
Nanuana_32778	Atal Jal	Pizeometer	29.5542	74.8558	2024	8.37	412	242	106.1	33.99	5.15	32	4	2.204	97.73	50.51	51.4	0.21	13.5
Nathor_32779	CGWB	Tube Well	29.6722	74.6569	2015	Sample not collected from this location													
Nathor_32779	CGWB	Tube Well	29.6722	74.6569	2016	8.3	361	ND	146.0	37.0	13.0	18.0	3.3	0.0	122.0	52.0	28.0	0.24	3.20
Nathor_32779	CGWB	Tube Well	29.6722	74.6569	2017	7.89	8296	ND	1451.0	232.0	211.0	1231.0	28.0	0.0	620.0	1768.0	1248.0	4.41	47.00
Nathor_32779	CGWB	Tube Well	29.6722	74.6569	2018	8.5	872	ND	200.0	32.0	29.0	111.0	7.0	36.0	98.0	193.0	78.0	1.12	2.77
Nathor_32779	CGWB	Tube Well	29.6722	74.6569	2019	8.45	2982	ND	371.0	55.0	57.0	524.0	20.0	44.0	134.0	778.0	369.0	0.76	21.00
Nathor_32779	CGWB	Tube Well	29.6722	74.6569	2020	8.47	1340	ND	214.4	36.8	29.8	216.0	6.0	24.0	134.2	321.0	134.7	0.87	0.89
Nathor_32779	CGWB	Tube Well	29.6722	74.6569	2021	8.41	2457	ND	350.7	57.1	50.6	451.0	7.0	55.0	321.0	1079.0	613.0	0.57	15.00
Nathor_32779	CGWB	Tube Well	29.6722	74.6569	2022	8.14	2880	ND	530.0	72.0	85.1	510.0	16.0	0.0	366.0	816.0	326.6	0.76	11.00
Nathor_32779	CGWB	Tube Well	29.6722	74.6569	2023	8.1	706	ND	150.0	32.0	17.0	90.0	5.0	0.0	134.0	120.0	71.0	0.18	17.00
Nathor_32779	CGWB	Tube Well	29.6722	74.6569	2024	7.95	3021	0	470.4	72.14	70.53	520	11	Nil	439.3	723	340.3	0.76	19
Nathor_32779	Atal Jal	Pizeometer	29.6276	74.6324	2024	8.81	1709	1041	456.2	144.4	23.19	137	16	25.49	395.7	231.4	236.5	0.9	49.75
Pattirathawas_32781	Atal Jal	Tubewell	29.6007	74.7184	2024	7.49	3390	2030	838.1	212.4	74.72	356	19	2.004	688	363	637.4	0.9	52.25
Rampur Their_32783	Atal Jal	Pizeometer	29.5235	74.7951	2024	7.94	1198	777	339.5	110.5	15.46	102	12	2.538	307.4	137.9	174.8	0.67	37.75
Sadewala_32785	Atal Jal	Pizeometer	29.6453	74.7209	2024	7.87	15114	8854	3872	1236	190.7	1163	139	24.88	3545	1726	1974	7.2	412
Santawali_32787	Atal Jal	Tubewell	29.5231	74.7521	2024	7.43	1076	695	286.4	72.22	25.76	122	6	0.607	239.4	131.4	215.9	0.64	19.5
Sultanpuria_32788	Atal Jal	Pizeometer	29.5414	74.875	2024	8.41	4184	2550	1114	356.9	54.11	335	40	24.89	1006	497.2	565.4	2.1	118.3
Ther Shahidan_32789	Atal Jal	Tubewell	29.5824	74.5806	2024	8.59	1191	728	297	76.47	25.76	128	7	9.143	241	139.3	226.2	0.67	20.25

Name of District	Name of Block	Source	Name of village/ OW data	Latitude	Longitude	EC June 2020	EC June-2021	EC June-2022	EC June-2023	EC June-2024
Sirsa_74	Rania_551	SGWB	Abholi	29.5093	74.8735	1600	1700	1700	1600	2200
Sirsa_74	Rania_551	Atal Jal	Abutgarh_32737	29.5098	74.9068	ND	ND	ND	ND	629
Sirsa_74	Rania_551	Atal Jal	Bacher_32738	29.6494	74.5975	ND	ND	ND	ND	3214
Sirsa_74	Rania_551	SGWB	Bahia	29.5927	74.6809	2100	2300	2700	2200	2400
Sirsa_74	Rania_551	Atal Jal	Bahia_32739	29.5918	74.6808	ND	ND	ND	ND	2795
Sirsa_74	Rania_551	SGWB	Balasar	29.5564	74.7779	4000	2200	3900	4000	3600
Sirsa_74	Rania_551	Atal Jal	Balasar_32740	29.5575	74.7758	ND	ND	ND	ND	5022
Sirsa_74	Rania_551	SGWB	Bani	29.599	74.6185	4400	4600	2500	3000	3100
Sirsa_74	Rania_551	SGWB	Bharolainwali	29.5387	74.7671	2200	1800	2100	2500	2300
Sirsa_74	Rania_551	Atal Jal	Bharolanwali_32742	29.5397	74.7705	ND	ND	ND	ND	1419
Sirsa_74	Rania_551	SGWB	Bhuna	NA	NA	4100	4000	ND	ND	ND
Sirsa_74	Rania_551	Atal Jal	Bhuna_32743	29.6567	74.8086	ND	ND	ND	ND	637
Sirsa_74	Rania_551	Atal Jal	Chak Sahiban_32746	29.479	74.902	ND	ND	ND	ND	1565
Sirsa_74	Rania_551	Atal Jal	Chakan_32744	29.6628	74.7895	ND	ND	ND	ND	13898
Sirsa_74	Rania_551	SGWB	Chakkan	29.6626	74.7896	4100	4200	6300	6500	6500
Sirsa_74	Rania_551	Atal Jal	Chakrayian_32745	29.4926	74.9114	ND	ND	ND	ND	666
Sirsa_74	Rania_551	SGWB	Darewala	NA	NA	7400	6500	ND	ND	ND
Sirsa_74	Rania_551	Atal Jal	Darewala_32747	29.614	74.8857	ND	ND	ND	ND	12976
Sirsa_74	Rania_551	Atal Jal	Dhamora Theri_32748	29.4932	74.8631	ND	ND	ND	ND	641
Sirsa_74	Rania_551	Atal Jal	Dhani Bangi_32749	29.5245	74.917	ND	ND	ND	ND	3472
Sirsa_74	Rania_551	Atal Jal	Dhani Satnam Singh_32751	29.485	74.8276	ND	ND	ND	ND	1083
Sirsa_74	Rania_551	SGWB	Dhanoor	29.5258	74.9163	2700	1000	2000	1800	1900

Name of District	Name of Block	Source	Name of village/ OW data	Latitude	Longitude	EC June 2020	EC June-2021	EC June-2022	EC June-2023	EC June-2024
Sirsa_74	Rania_551	Atal Jal	Dhottar_32753	29.5769	74.8933	ND	ND	ND	ND	3437
Sirsa_74	Rania_551	SGWB	Dudhianwali	29.6138	74.7169	8000	8200	6600	7000	6300
Sirsa_74	Rania_551	SGWB	Fatehpuria	29.5725	74.8256	3000	3500	3500	4000	4300
Sirsa_74	Rania_551	Atal Jal	Fatehpuria_32755	29.5724	74.825	ND	ND	ND	ND	2740
Sirsa_74	Rania_551	Atal Jal	Ferozabad_32756	29.4813	74.8525	ND	ND	ND	ND	642
Sirsa_74	Rania_551	SGWB	Ghoranwali	29.644	74.7889	4500	4200	2900	3200	3300
Sirsa_74	Rania_551	Atal Jal	Ghoranwali_32757	29.6377	74.786	ND	ND	ND	ND	7541
Sirsa_74	Rania_551	Atal Jal	Gidranwali_32759	29.466	74.8681	ND	ND	ND	ND	648
Sirsa_74	Rania_551	SGWB	Gindra	29.6198	74.7609	4400	4500	6300	6400	6100
Sirsa_74	Rania_551	Atal Jal	Gindran_32758	29.6171	74.7609	ND	ND	ND	ND	3418
Sirsa_74	Rania_551	Atal Jal	Govindpura_32760	29.5099	74.87	ND	ND	ND	ND	1282
Sirsa_74	Rania_551	Atal Jal	Himmatpura_298066	29.504	74.7257	ND	ND	ND	ND	1337
Sirsa_74	Rania_551	Atal Jal	Jagjeet Nagar_265152	29.5656	74.7009	ND	ND	ND	ND	1749
Sirsa_74	Rania_551	SGWB	Jodhpuria	29.6214	74.9065	3500	3600	3300	3800	3500
Sirsa_74	Rania_551	Atal Jal	Jodhpuria_32762	29.622	74.9071	ND	ND	ND	ND	6695
Sirsa_74	Rania_551	SGWB	Keharwala	29.6545	74.7124	8600	8000	1700	1500	2000
Sirsa_74	Rania_551	Atal Jal	Keharwala_32763	29.664	74.7099	ND	ND	ND	ND	13753
Sirsa_74	Rania_551	Atal Jal	Khaja Khera_32764	29.6049	74.7613	ND	ND	ND	ND	3696
Sirsa_74	Rania_551	SGWB	Kharian	29.6218	74.8586	4000	4300	4000	3500	3800
Sirsa_74	Rania_551	Atal Jal	Kharian_32765	29.6237	74.8578	ND	ND	ND	ND	13148
Sirsa_74	Rania_551	Atal Jal	Kotha Sainpal_32766	29.6312	74.65	ND	ND	ND	ND	2098
Sirsa_74	Rania_551	SGWB	Kussar	29.6074	74.7848	6800	6700	6200	4500	4700
Sirsa_74	Rania_551	Atal Jal	Kussar_32767	29.6071	74.7844	ND	ND	ND	ND	3548
Sirsa_74	Rania_551	Atal Jal	Mamerkhera_32768	29.6748	74.6779	ND	ND	ND	ND	4315
Sirsa_74	Rania_551	Atal Jal	Mangalia_32769	29.5791	74.8589	ND	ND	ND	ND	3511
Sirsa_74	Rania_551	Atal Jal	Mattuwala_32770	29.6324	74.6936	ND	ND	ND	ND	3711
Sirsa_74	Rania_551	Atal Jal	Mehna Khera_32771	29.6126	74.8125	ND	ND	ND	ND	8369
Sirsa_74	Rania_551	SGWB	MehnaKhera	29.4194	74.8156	6100	4500	4300	4700	4800
Sirsa_74	Rania_551	Atal Jal	Mohmadpuria_32773	29.5655	74.8132	ND	ND	ND	ND	326
Sirsa_74	Rania_551	Atal Jal	Moranwali_32782 (Peerkhera)	29.639	74.9086	ND	ND	ND	ND	11791
Sirsa_74	Rania_551	SGWB	Moujdeen	29.4657	74.8857	1800	1900	2100	2500	2500
Sirsa_74	Rania_551	Atal Jal	Moujdeen_32774	29.468	74.8902	ND	ND	ND	ND	991
Sirsa_74	Rania_551	Atal Jal	Nagrana / Rania_32775	29.5001	74.7884	ND	ND	ND	ND	1095
Sirsa_74	Rania_551	Atal Jal	Naiwala_32776	29.5877	74.7574	ND	ND	ND	ND	4157
Sirsa_74	Rania_551	SGWB	Nakaura	29.5112	74.752	2000	2200	2100	2500	3200
Sirsa_74	Rania_551	SGWB	Nanuana	29.5609	74.848	3500	3800	6400	6000	5500
Sirsa_74	Rania_551	Atal Jal	Nanuana_32778	29.5542	74.8558	ND	ND	ND	ND	412
Sirsa_74	Rania_551	SGWB	Nathor	29.6308	74.635	3800	3900	2500	2500	2500
Sirsa_74	Rania_551	Atal Jal	Nathor_32779	29.6276	74.6324	ND	ND	ND	ND	1709
Sirsa_74	Rania_551	SGWB	Ottu	29.4927	74.8911	2000	2200	1800	1200	1100
Sirsa_74	Rania_551	Atal Jal	Pattirathawas_32781	29.6007	74.7184	ND	ND	ND	ND	3390
Sirsa_74	Rania_551	SGWB	Peer Khera	29.6374	74.9066	2900	2500	6000	5500	4500
Sirsa_74	Rania_551	Atal Jal	Rampur Their_32783	29.5235	74.7951	ND	ND	ND	ND	1198
Sirsa_74	Rania_551	SGWB	Rania	29.5281	74.8381	3500	3700	1300	1800	2200
Sirsa_74	Rania_551	SGWB	Sadewala	29.6431	74.7239	4900	1400	6400	6300	7500
Sirsa_74	Rania_551	Atal Jal	Sadewala_32785	29.6453	74.7209	ND	ND	ND	ND	15114
Sirsa_74	Rania_551	SGWB	Sainpal	29.6191	74.6457	4700	5000	2400	2900	3000

AtalBhujalYojana - Block Hydrogeological Report

Name of District	Name of Block	Source	Name of village/ OW data	Latitude	Longitude	EC June 2020	EC June-2021	EC June-2022	EC June-2023	EC June-2024
Sirsa_74	Rania_551	Atal Jal	Santawali_32787	29.5231	74.7521	ND	ND	ND	ND	1076
Sirsa_74	Rania_551	Atal Jal	Sultanpuria_32788	29.5414	74.875	ND	ND	ND	ND	4184
Sirsa_74	Rania_551	Atal Jal	Ther Shahidan_32789	29.5824	74.5806	ND	ND	ND	ND	1191

